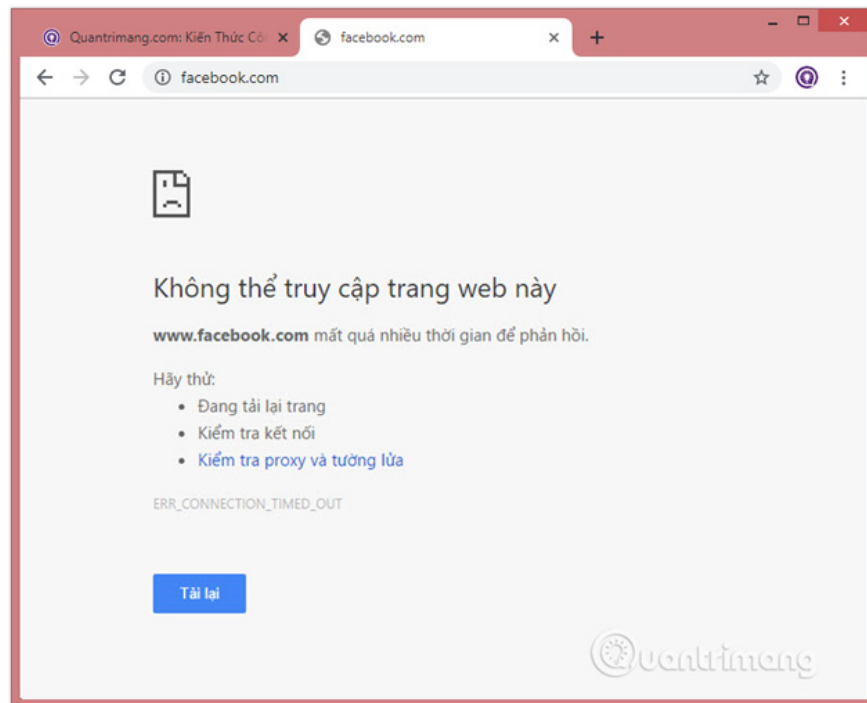


Quickly fix the 'This site can't be reached' error on Chrome.

When receiving a message on Chrome indicating that a website cannot be accessed, users have many ways to resolve this error. There are many reasons why a website might be blocked on Chrome, such as region restrictions, firewall errors, DNS issues, etc.

When receiving a message on Chrome indicating that a website cannot be accessed, users have many ways to resolve this error. There are many reasons why a website might be blocked on Chrome, such as region restrictions, firewall errors, DNS issues, etc.

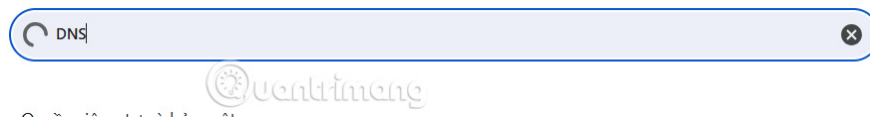
In the article below, Network Administration will guide you through 4 ways to fix the **"This site can't be reached"** error on the Chrome browser.



How to access blocked websites on Chrome without software

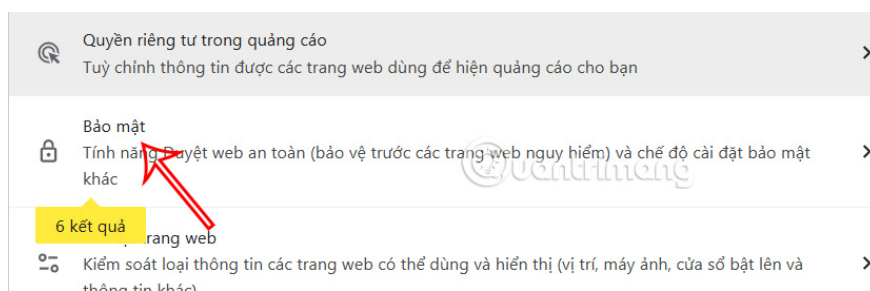
Step 1:

On the Chrome browser interface, click the **three-dot icon** and then select **Settings** from the displayed list. Next, on the new interface, **enter the keyword DNS** into the search bar for faster searching.

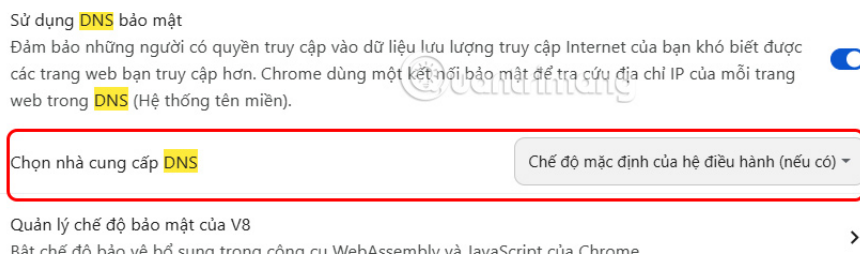


Step 2:

Looking down, we click on **the Security section** to make adjustments.

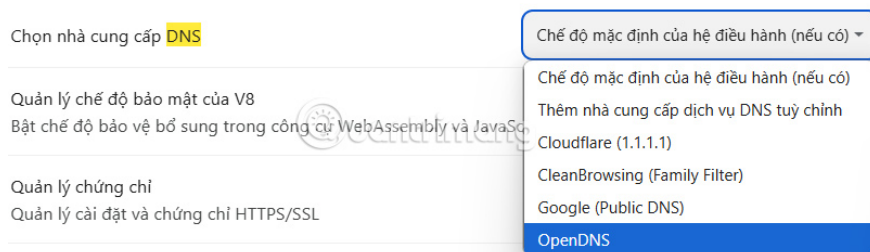


In the Chrome browser settings interface, scroll down to **the Advanced section**, then find the **Select provider** option and **select DNS provider's default settings (if available)**.



Step 3:

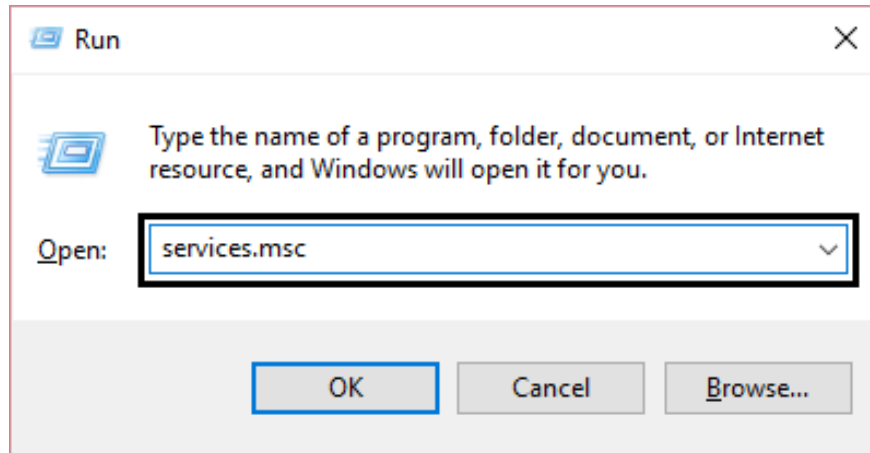
A list will appear allowing you to choose **to change from the default mode to open DNS so that the browser uses the new DNS server**. Finally, reload your browser and access the blocked website again.



Restart the DNS client.

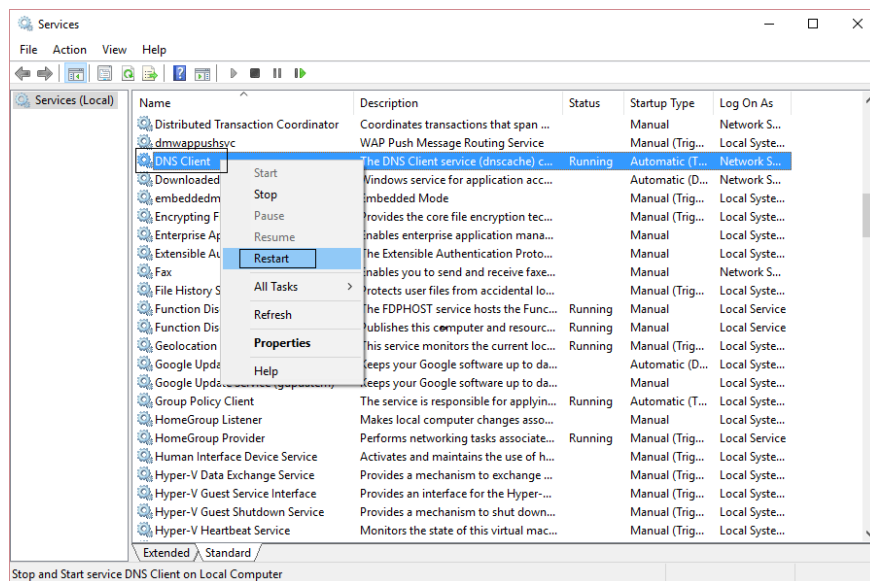
Follow the steps below to start **the DNS Client** :

Step 1: Press the Windows + R key combination to open the Run command window, then type **services.msc** and press Enter to open the Services window .



Step 2 : In the Services window , scroll down to find the item named **DNS client**.

Step 3 : Right-click on **the DNS client** and select **Restart**.

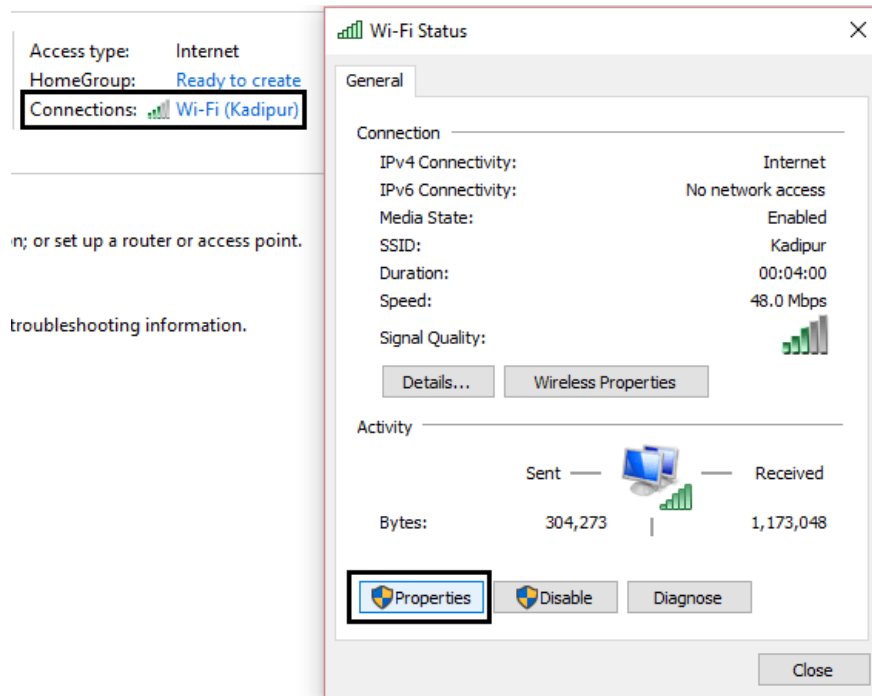


Step 4 : Your DNS client will now restart. After restarting, check if the error persists.

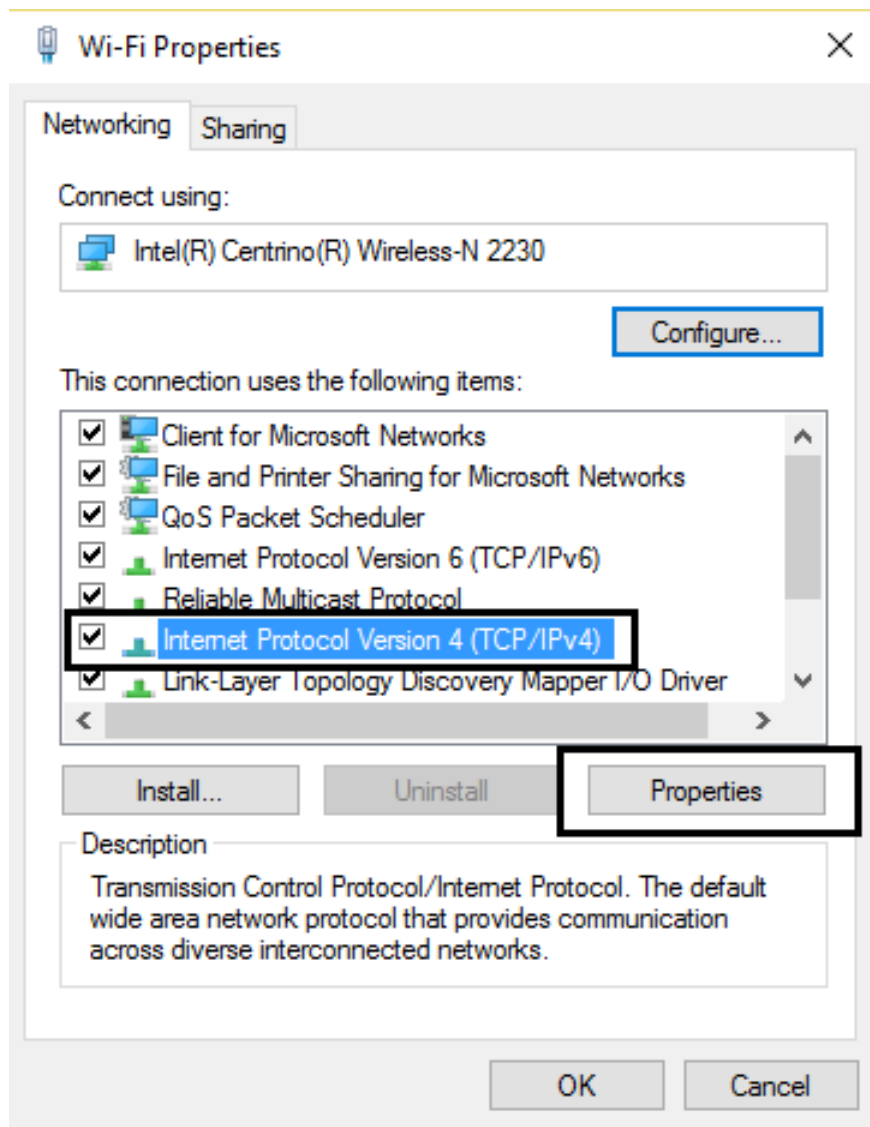
Change the IPv4 DNS address.

Step 1: Right-click the network icon in the system tray and then click **Open Network and Sharing Center** .

Step 2 : In the **Network and Sharing Center** window , click on the network you are connected to, then select **Properties**.



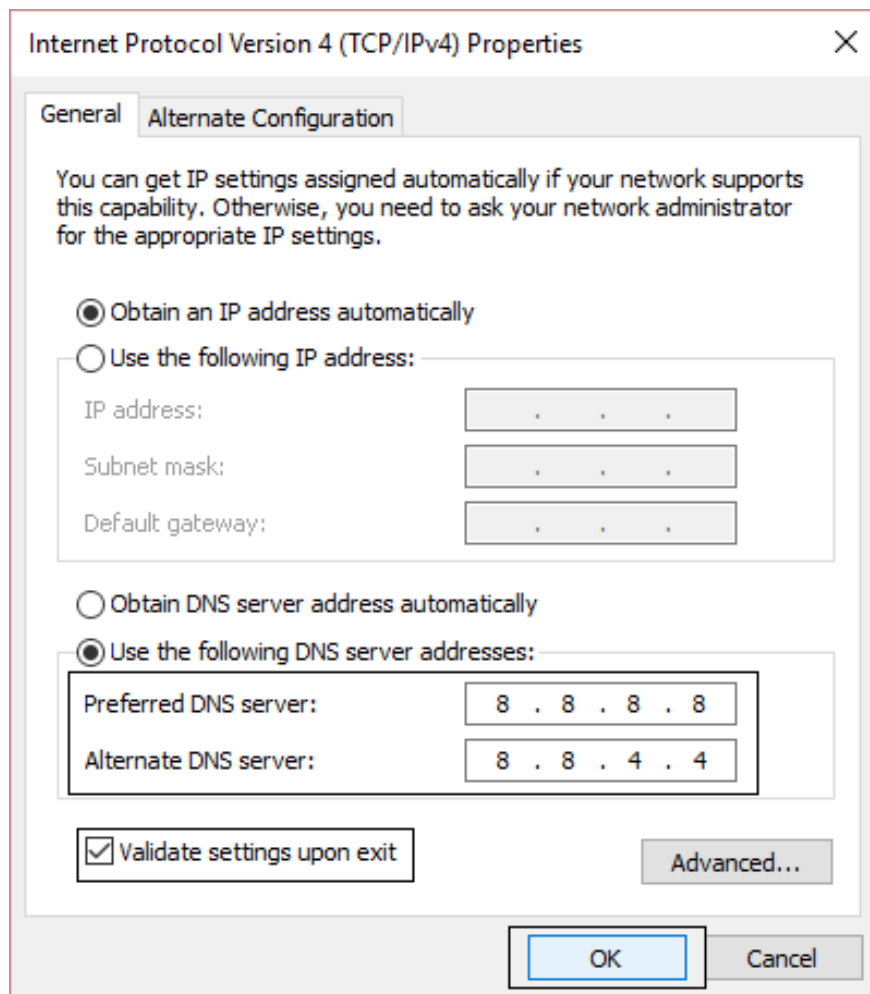
Step 3: In the **Wifi Properties** window , find and click on **Internet Protocol Version 4 (TCP/IP)** , then click on **Properties**.



Step 4 : Check the box next to "Use the following DNS server addresses".

Step 5 : Enter the following addresses into the **Preferred DNS server** and **Alternate DNS server** fields, respectively:

Preferred DNS Server: 8.8.8.8 Alternate DNS Server: 8.8.4.4



Step 6 : Check the box next to " **Validate settings upon exit,**" then click **OK** and close the window.

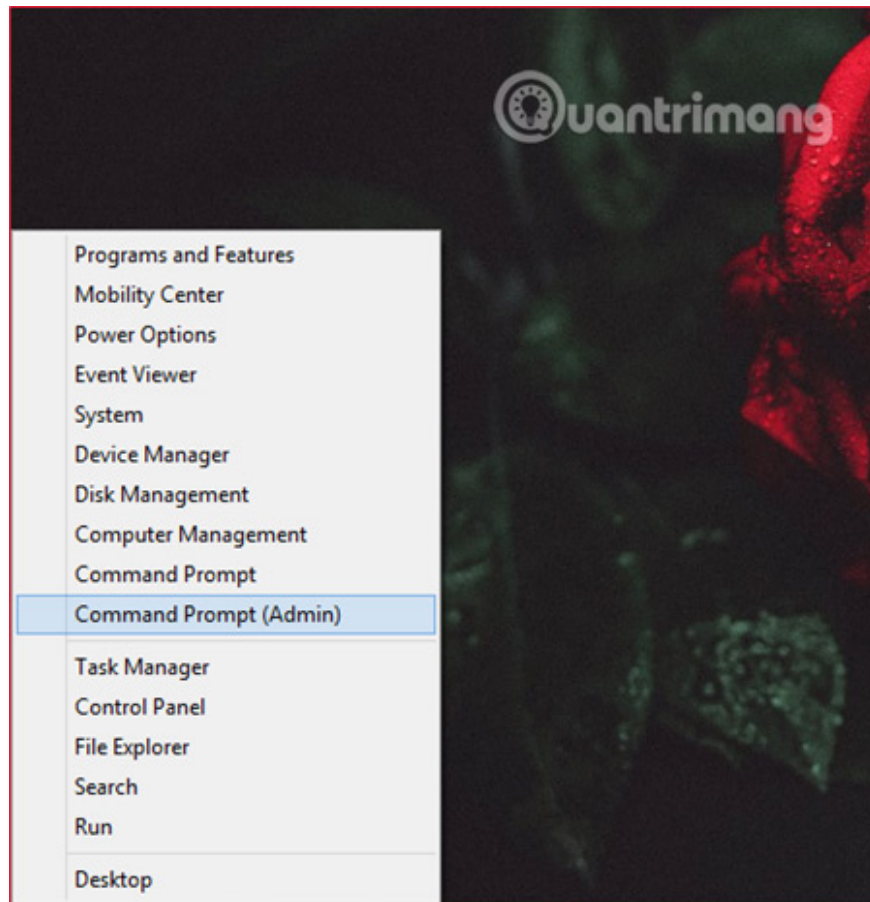
Step 7 : Finally, check if the error persists.

Additionally, readers can refer to how to change DNS settings to improve web browsing speed here.

Reset TCP/IP

Step 1: Right-click the **Start** button in the bottom left corner of the screen, then select **Command Prompt (Admin)**.

Alternatively, press the **Windows + X key combination**, then click on **Command Prompt (Admin)**.



Step 2: In the Command Prompt window , enter each of the following commands one by one:

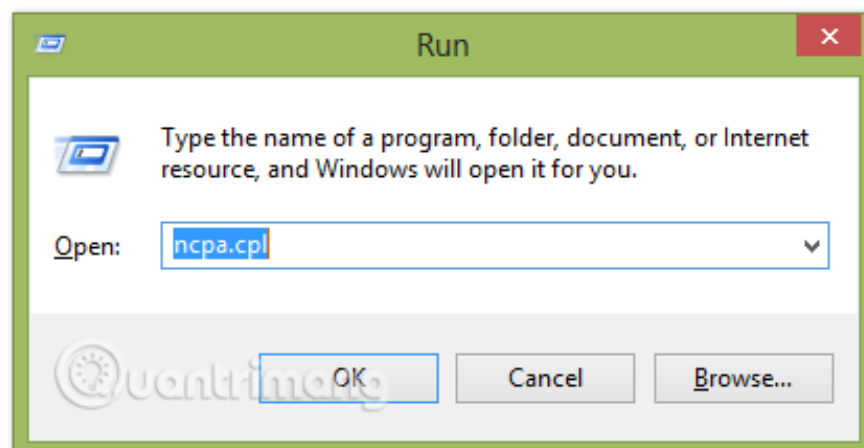
```
ipconfig /release ipconfig /all ipconfig /flushdns ipconfig /renew netsh int ip s
```

Step 3: After executing the commands, restart your computer and check if the error persists.

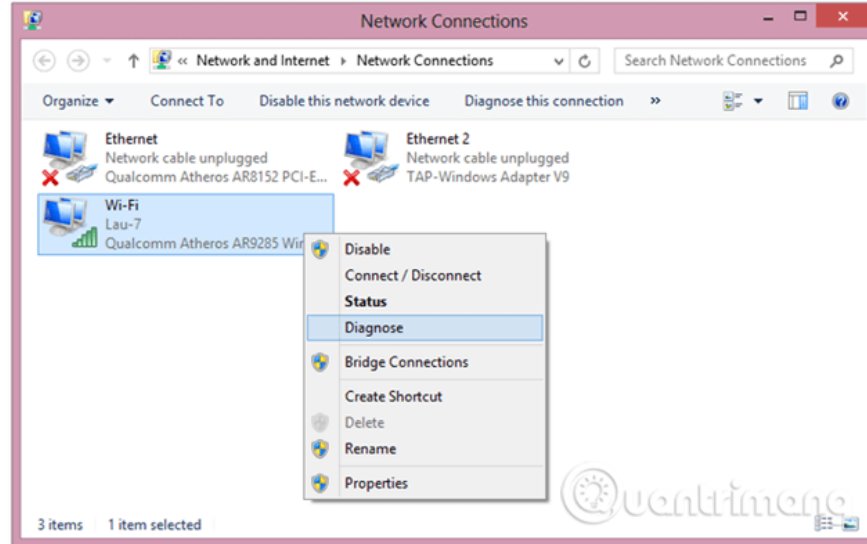
Run Network Troubleshooter to fix network problems.

Step 1: Press the Windows key + **R** to open the **Run dialog box**.

Step 2: Type **netsh int ip** into the **Run** command window and press Enter.

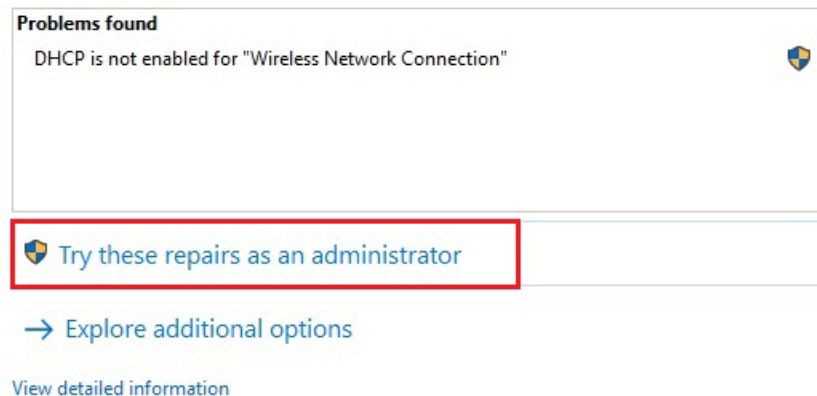


Step 3: Right-click on the Wi-Fi connection you are using and select **Diagnose** .



Step 4: Run the Network Troubleshooter, and if you receive the message "**DHCP is not enabled for 'Wireless Network Connection'**", follow these steps to fix the error.

The remaining repairs require administrator permissions



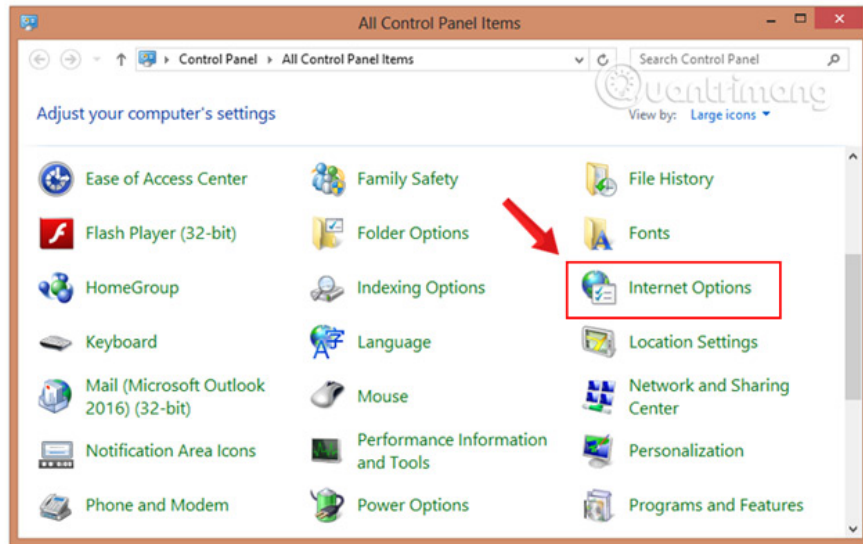
Step 5: Click Next to continue fixing the error, then click **Try This Repairs as an Administrator**.

Step 6: On the next prompt window, click Apply this Fix.

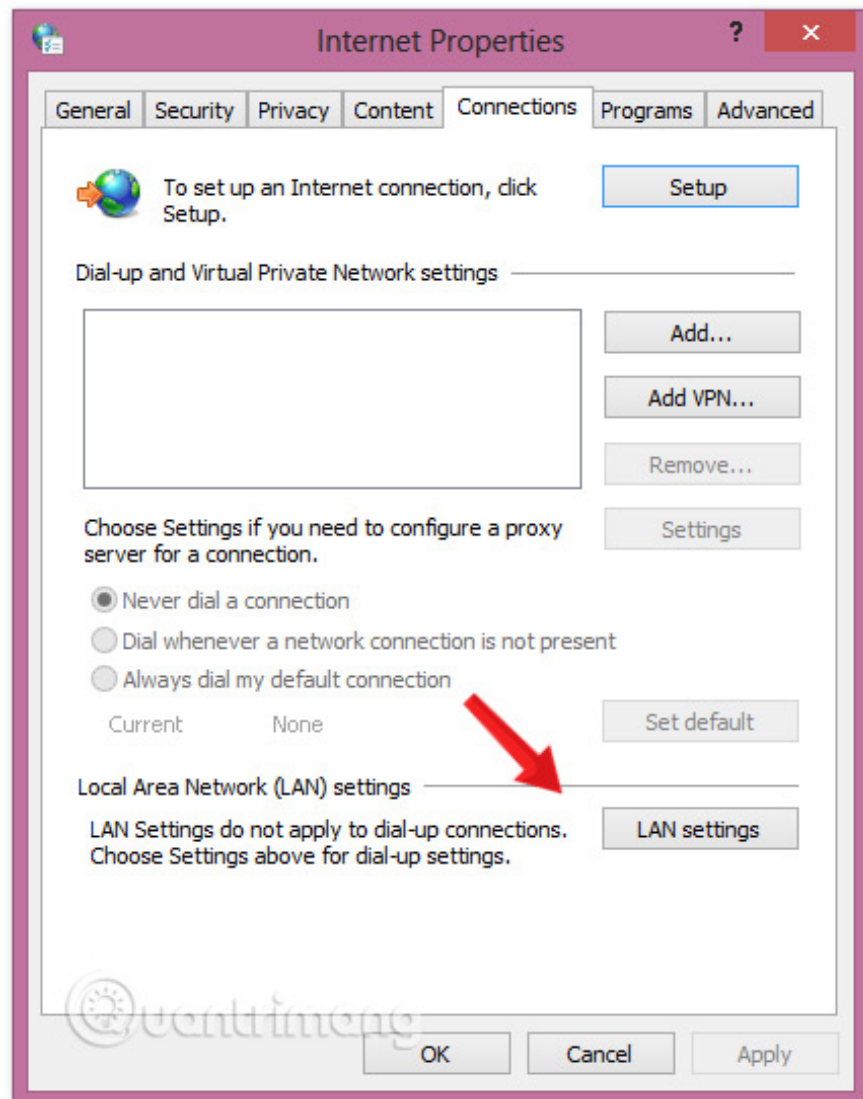
Step 7: Restart your computer to apply the changes and check if the "This site can't be reached" error still persists.

Check the "Automatically detect settings" option.

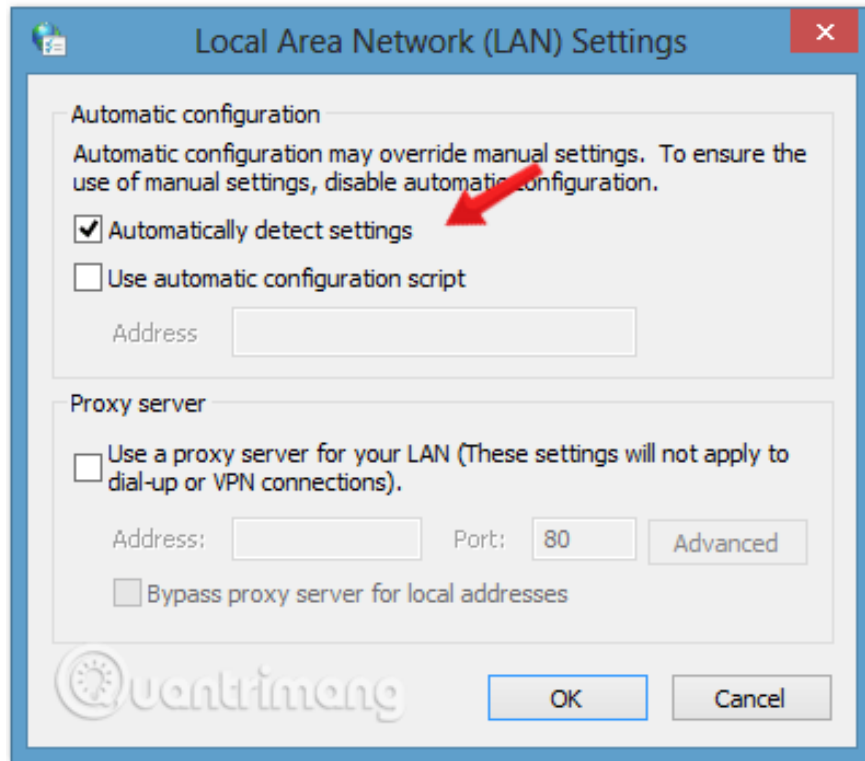
Step 1: Go to the **Internet Options** menu in the **Control Panel**.



Step 2: In the next window, select the **Connections** tab , then click on **LAN Settings** .



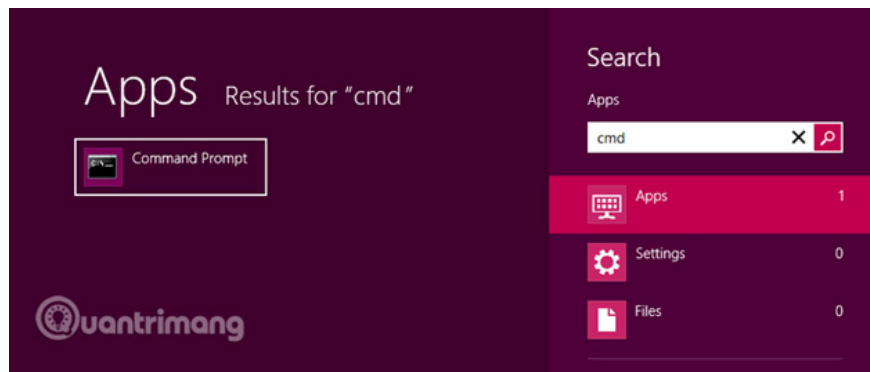
Step 3: Check the box for **Automatically Detect Settings** and then press **OK**.



Step 4: Make sure "Use a Proxy Server for your LAN" is not selected; if it is selected, uncheck it.

Clear the DNS cache (flush DNS cache)

Step 1 : Go to **Start**, type " **cmd**" into the search bar to find **Command Prompt**.



Step 2 : In the Command Prompt window , enter the following command and press Enter:

```
ipconfig /flushdns
```



```
Microsoft Windows [Version 6.2.9200]
(c) 2012 Microsoft Corporation. All rights reserved.

C:\Users\User>ipconfig /flushdns

Windows IP Configuration

Successfully flushed the DNS Resolver Cache.

C:\Users\User>
```

Step 3 : This command will clear the Windows DNS cache and fix any DNS errors (if any).

Finally, check if the error persists.

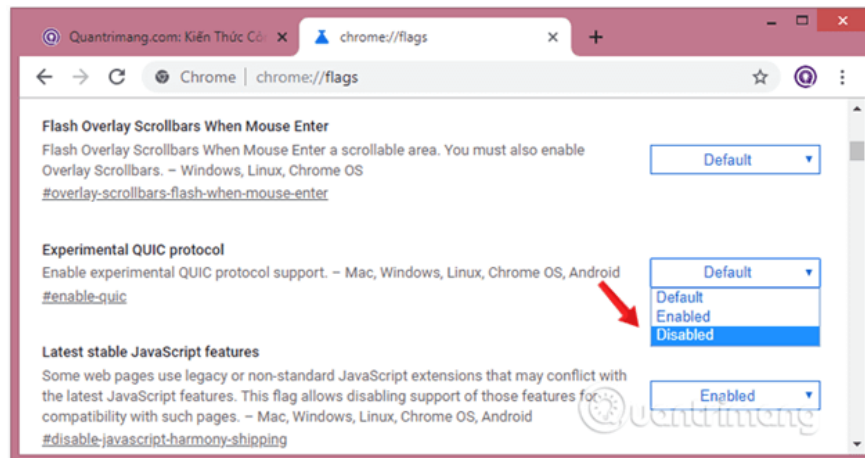
Disable Experimental Quick Protocol

Step 1 : Open the Chrome browser on your computer.

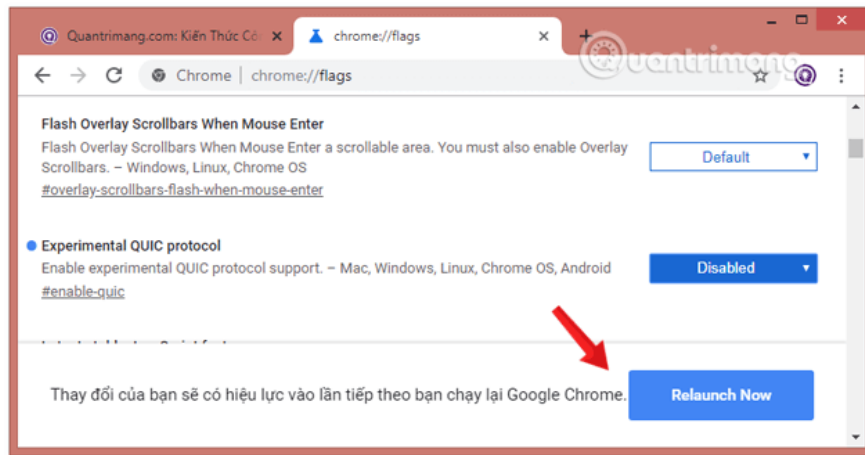
Step 2 : Next, enter **chrome://flags** into the browser's URL address bar and press **Enter** .

At this point, a window displaying a list of available **experiments will appear on the screen.**

Step 3 : Next, find the **Experimental QUIC Protocol** section and click on the **Disabled** option from the **drop-down menu** .



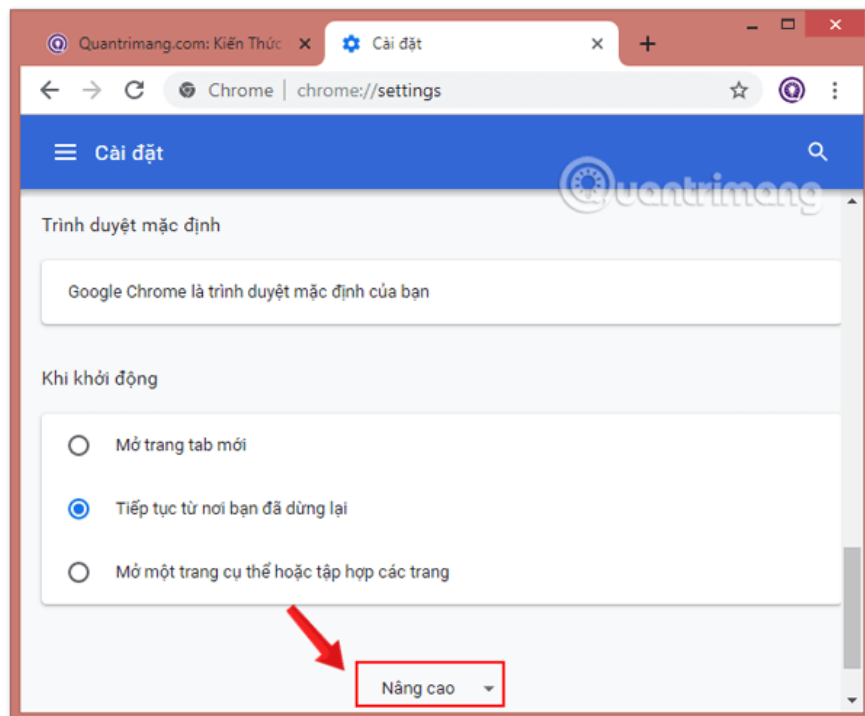
Step 4 : Finally, click the **Relaunch Now** button to apply the changes.



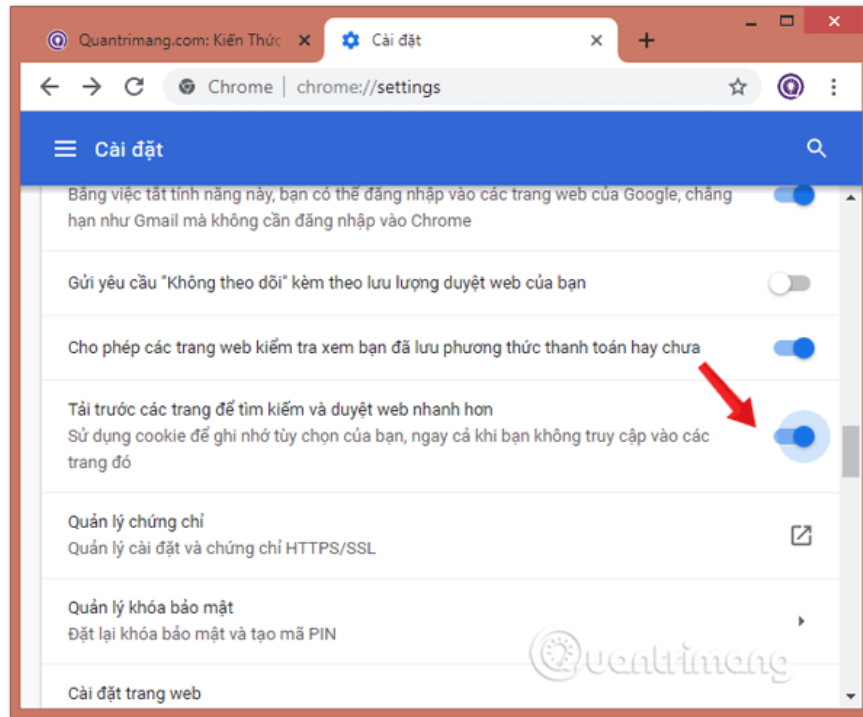
DNS Prefetching

Step 1 : Open the Chrome browser on your computer, then type **chrome://settings/** into the address bar and press Enter to open the **Chrome Settings** window .

Step 2 : Scroll down the **Settings** window , find and select the option called **Advanced** to display advanced settings in the Chrome browser.



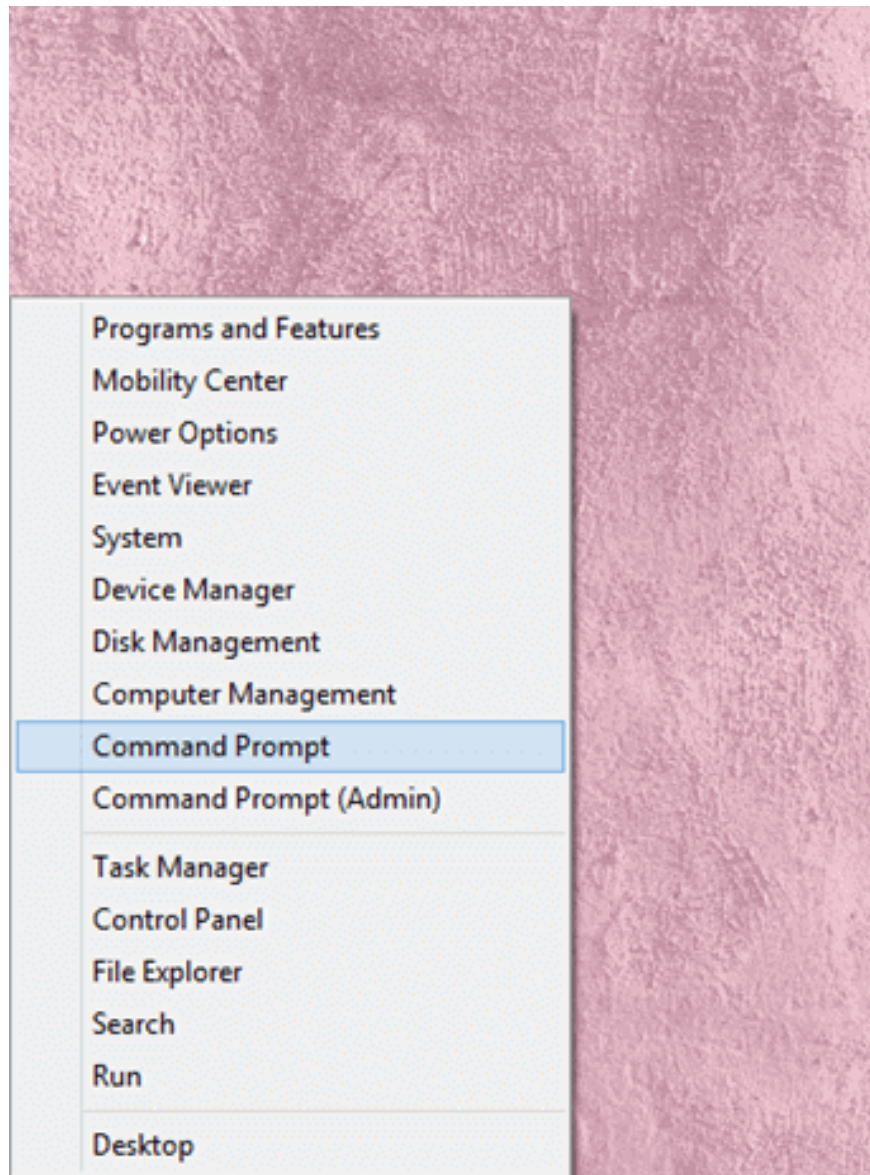
Step 3 : Next, find and enable the option called " **Preload pages for faster searching and browsing .**" Selecting this setting will improve web loading times.



Error Specific site can't be reached

In some cases, certain websites fail to load and display errors. To fix this error:

Step 1 : Open the Command Prompt window by right-clicking the **Start** button , then selecting **Command Prompt** from the Power User Menu.



Step 2 : In the Command Prompt window , enter the following command and press **Enter** :

tracert www.sitename.com

A screenshot of a Windows Command Prompt window. The window title is 'Command Prompt'. The text inside shows the execution of the 'tracert' command. The output displays the route from the local machine to the destination IP address, including hop numbers, round-trip times, and IP addresses of intermediate routers. The final destination is identified as 'static.vnpt.vn [123.30.180.60]'. The window also shows the 'Trace complete.' message and the current directory 'C:\Users\User>'.

```
Microsoft Windows [Version 6.2.9200]
(c) 2012 Microsoft Corporation. All rights reserved.

C:\Users\User>tracert www.quantrimang.com

Tracing route to quantrimang.com [123.30.180.60]
over a maximum of 30 hops:
  0  12 ms  18 ms  2 ms  192.168.70.1
  1  15 ms  59 ms  23 ms  192.168.11.1
  2  124 ms  171 ms  104 ms  118.70.0.12
  3  4 ms  2 ms  3 ms  118.70.0.12
  4  13 ms  6 ms  6 ms  113.22.4.121
  5  3 ms  6 ms  4 ms  118.70.1.174
  6  13 ms  7 ms  6 ms  113.22.4.112
  7  3 ms  5 ms  3 ms  static.vnpt.vn [113.171.6.225]
  8  4 ms  9 ms  4 ms  static.vnpt.vn [113.171.34.1]
  9  4 ms  3 ms  4 ms  static.vnpt.vn [113.171.27.126]
 10  6 ms  9 ms  9 ms  static.vnpt.vn [113.171.33.222]
 11  5 ms  5 ms  5 ms  static.vnpt.vn [123.30.180.60]

Trace complete.

C:\Users\User>
```

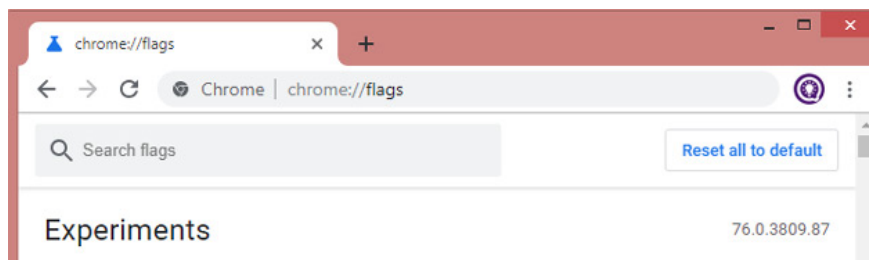
Note: In the above statement, replace **www.sitename.com** with the website address where you encountered the loading failure error.

Step 3 : If the ping is still working but the website is inaccessible, you need to contact your Internet service provider (ISP) immediately.

Reset Google Chrome settings.

Step 1: Enter **chrome://flags/** into the Chrome browser's address bar and press Enter.

Step 2: In the next window, find and click the "**Reset all to default**" button in the upper right corner of the screen and restart your Chrome browser.



Step 3: Finally, restart your browser to apply the changes and check if the "This site can't be reached" error still persists.

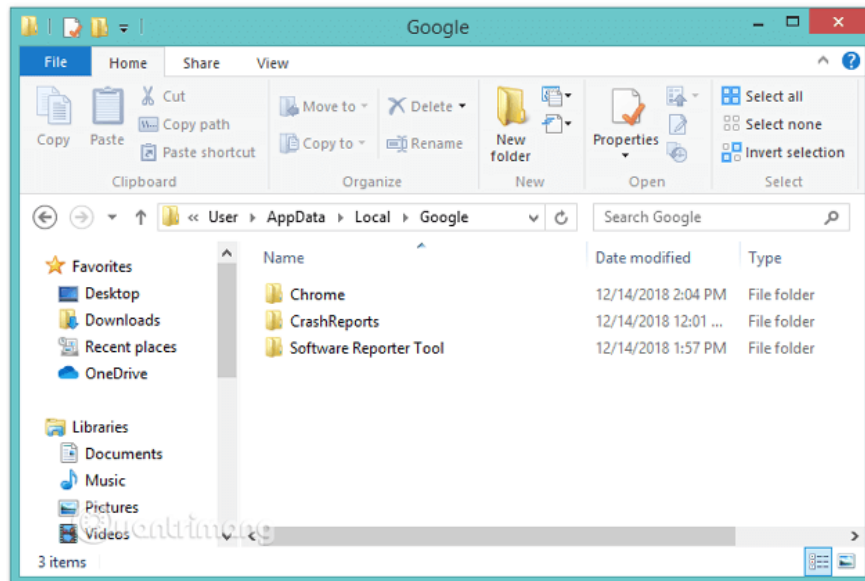
11. Reinstall Chrome browser.

Step 1: Access **the Control Panel**, then find and click on "**Uninstall a program**" and proceed to uninstall the Chrome browser from your computer.



Step 2: Navigate to the following path and delete everything in the folder.

C:\Users%your_name%\AppDataLocal\Google



Step 3: Download and install the latest version of the Chrome browser .

Step 4: Restart your computer, then reopen the Chrome browser to see if the error persists.

You finished reading the article "**Quickly fix the 'This site can't be reached' error on Chrome.**" edited by the [TipsMake](#) team. We hope this article has provided you with many useful tech tips and tricks. You can search for similar articles on tips and guides. Thank you for reading and for following us regularly.