

Quickly download new drivers through Device Manager on Windows 10

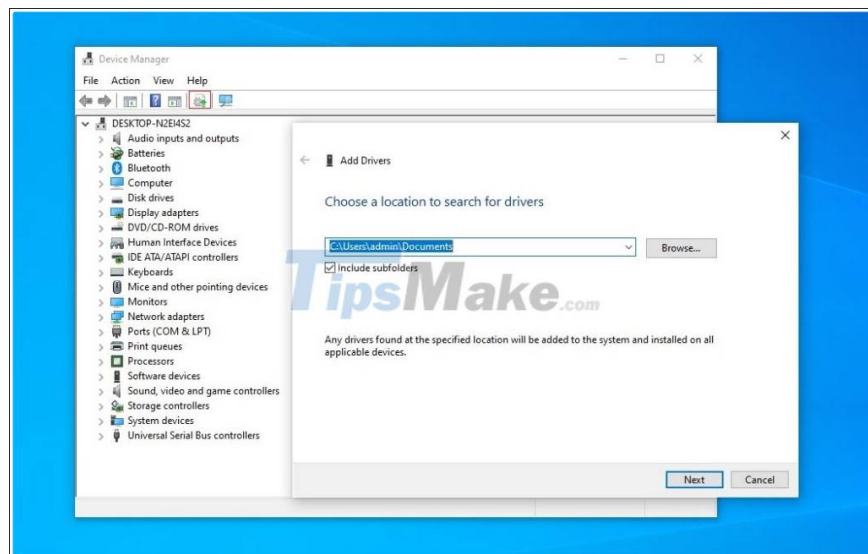
On Windows 10, drivers are needed for your device to connect with other devices and the operating system. Windows 10 provides a series of default generic drivers for monitors (displays), wireless connections such as Bluetooth, keyboards, mice, and other manufacturer-installed hardware.

Windows 10 usually automatically downloads and installs drivers through Windows Update, but not always the latest version, especially for graphics and wireless drivers.

To install the driver manually, the user needs to open the Device Manager and the device location requires a new driver. Once found, users need to right-click and select **Properties** . From there, users need to select the driver update option to download the new package from the manufacturer's website.

Identifying the correct device is another matter and you have to search manually. In preview builds, Microsoft appears to be testing a new feature that will allow users to quickly install new drivers without first identifying the device. Microsoft is also introducing new options to filter the list of installed drivers and devices.

To install a new driver, you can now click on the **Add driver** option , as shown in the image below.



It's important to remember that this feature only works when you add drivers for applicable devices. It cannot be used to update existing drivers. If you want to update an existing driver, you still need to find the device that requires driver update and select 'Update driver'.

New options in Device Manager

Microsoft has also enabled support for the new driver:

1. **Device by drivers:** This new option lists the drivers and devices that use the .inf file. It can help you identify devices using a specific driver. Once you have identified the driver, you will be able to remove it immediately.
2. **Drivers by type:** This new option lists inf driver files by device type.
3. **Drivers by devices:** This new option lists devices and their .inf files.

These new options are designed for advanced users and anyone can use it for easier driver management. The new options above have been added to Windows 10 Build 21343 and it will be rolled out widely with the Windows 10 Sun Valley update in October or November.

You finished reading the article "**Quickly download new drivers through Device Manager on Windows 10**" edited by the [TipsMake](#) team. We hope this article has provided you with many useful tech tips and tricks. You can search for similar articles on tips and guides. Thank you for reading and for following us regularly.