

# Quickly adjust the screen brightness on your MSI laptop.

Users who want to quickly increase or decrease the screen brightness of their MSI laptop can use one of the three fastest methods for adjusting screen brightness, which are detailed in the article below.

**MSI laptops** are products of a multinational technology company headquartered in New Taipei City, Taiwan. MSI laptops are considered among the best computer lines by users, in terms of product quality, design, and support services. A special feature is the screen quality, ranging from Full HD to higher resolutions like 4K, providing a very smooth gaming experience.



Adjusting the screen brightness of an MSI laptop.

Regarding the screen of this laptop series, users can easily adjust **the screen brightness of MSI laptops** without much difficulty; in fact, the operation is very simple.

## How to Increase/Decrease Screen Brightness on an MSI Laptop

As mentioned at the beginning of the article, to adjust the screen brightness of your MSI laptop, you can follow one of these three methods:

*Method 1: Use keyboard shortcuts to adjust laptop screen brightness.*

Many laptop manufacturers now design shortcut keys to adjust screen brightness from the **F1 to F12** keys (meaning there will be two keys to adjust brightness up and down in the list from **F1 to F12**, and usually these two keys will have a sun icon or a plus sign (+) or minus sign to increase or decrease the brightness).

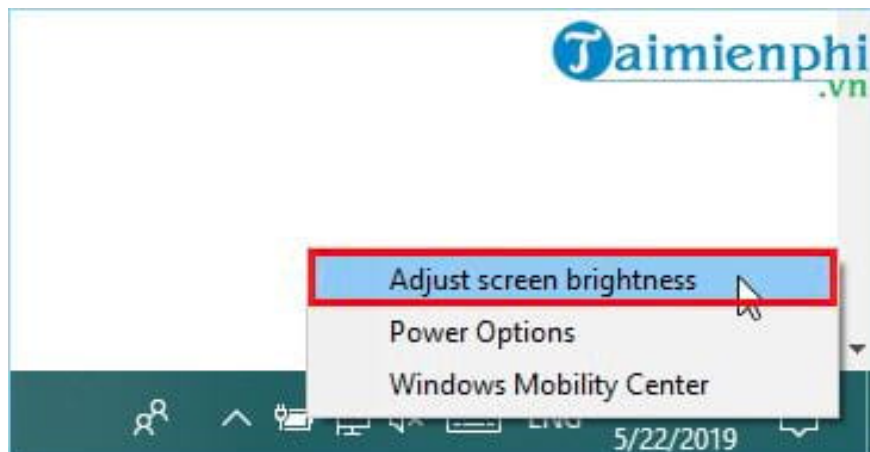
**For example**, HP typically uses the key combination **Fn + F2/F3** to increase or decrease laptop screen brightness. Other manufacturers may use **Fn + F4/F5** or **Fn + F5/F6** . => In this case, you would press the shortcut key combination **Fn plus one of the F keys** from F1 to F12, depending on the manufacturer.

**For MSI laptops** , the keyboard shortcut for adjusting brightness is: **Fn + Up Arrow/Down Arrow key => This means you use the Fn key plus the Up Arrow key to increase brightness; and Fn plus the Down Arrow key to decrease brightness.**

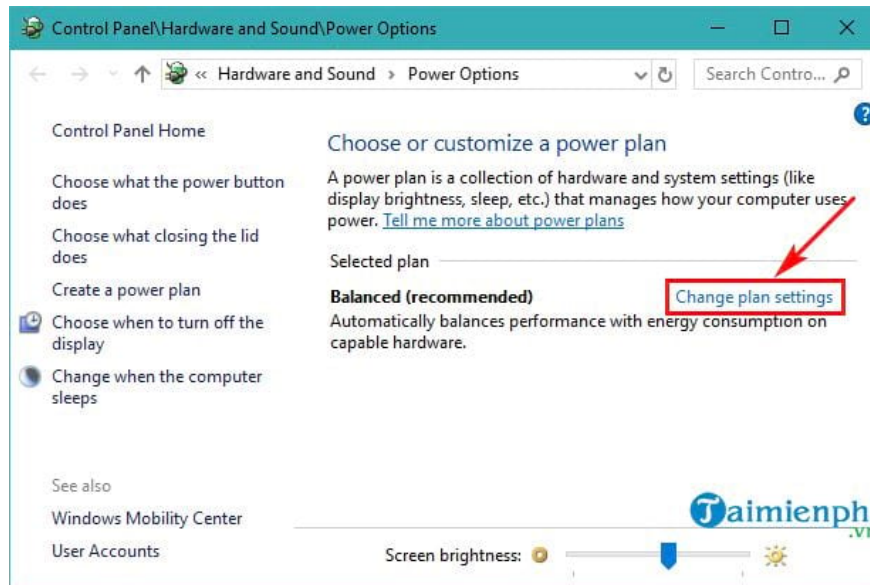


**Method 2: Adjust screen brightness in the Battery and Charging settings.**

In this method, you will click on the battery icon in the upper right corner of your laptop screen -> select **Adjust screen brightness**



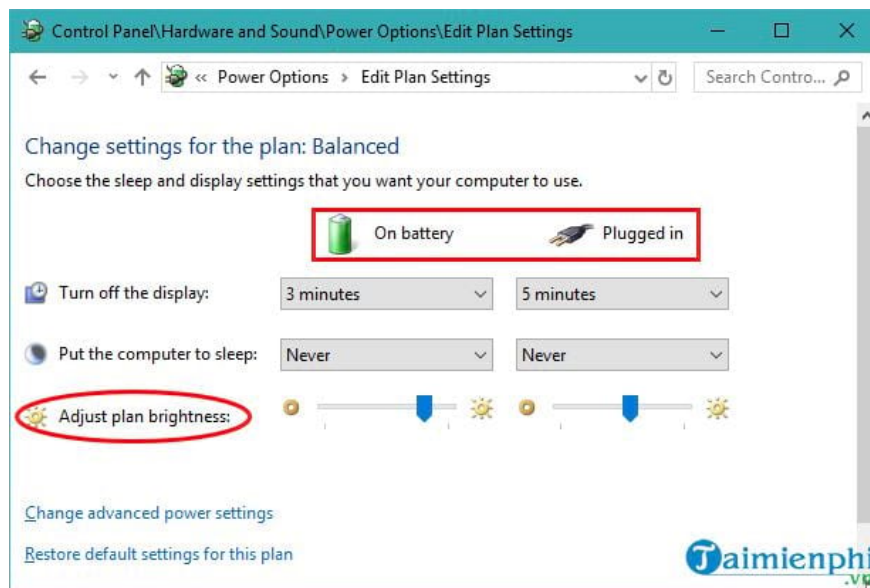
In the **Balanced** section , select **Change plan settings** as shown in the image below:



In the **Change settings for the plan: Balanced** interface, you will see two columns:

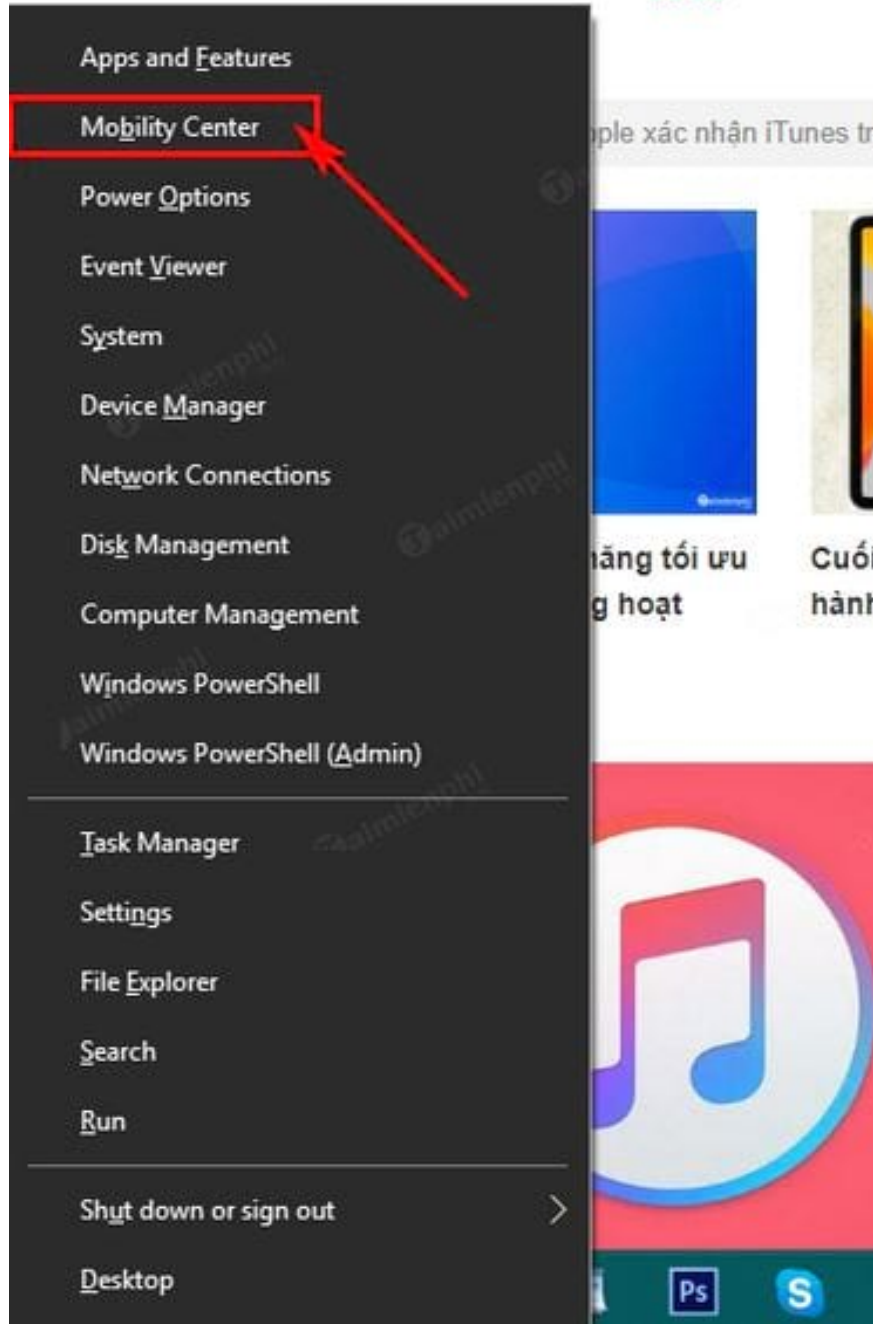
- **On Battery** : When using battery power
- **Plugged In** : When using charger

In the **Adjust Plan Brightness** settings, you can customize the screen brightness to your liking.

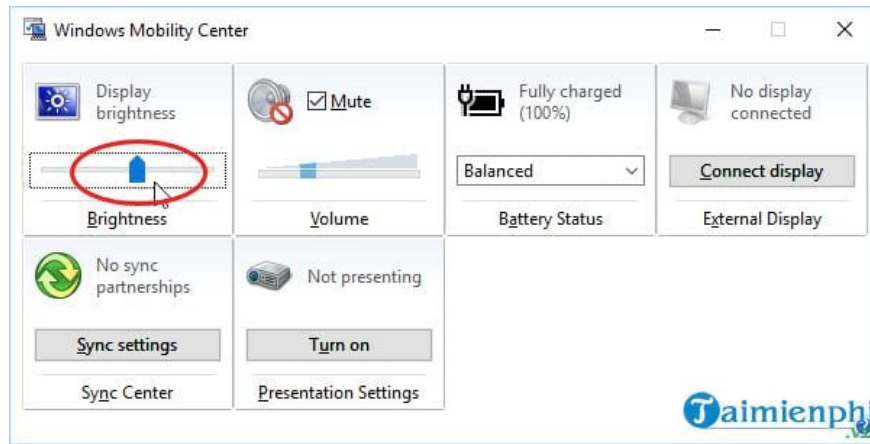


### ***Method 3: How to increase or decrease screen brightness in Windows Mobility Center***

On MSI laptops running Windows 7, 8, 8.1, and 10, press the **Windows + X** key combination and then select **Mobility Center** as shown in the image below:



In the interface that just appeared, you will see a brightness adjustment slider under **Display Brightness** -> Drag the slider to the left or right to increase or decrease the screen brightness of your MSI laptop.



Above are three quick ways to **adjust the screen brightness of your MSI laptop** that you can apply directly to your machine. The first method is probably the fastest and most commonly used. While the second and third methods are also good options, the last two can be easily applied to any laptop model.

You finished reading the article "**Quickly adjust the screen brightness on your MSI laptop.**" edited by the [TipsMake](#) team. We hope this article has provided you with many useful tech tips and tricks. You can search for similar articles on tips and guides. Thank you for reading and for following us regularly.