

Quick fix Cyclic Redundancy Check error

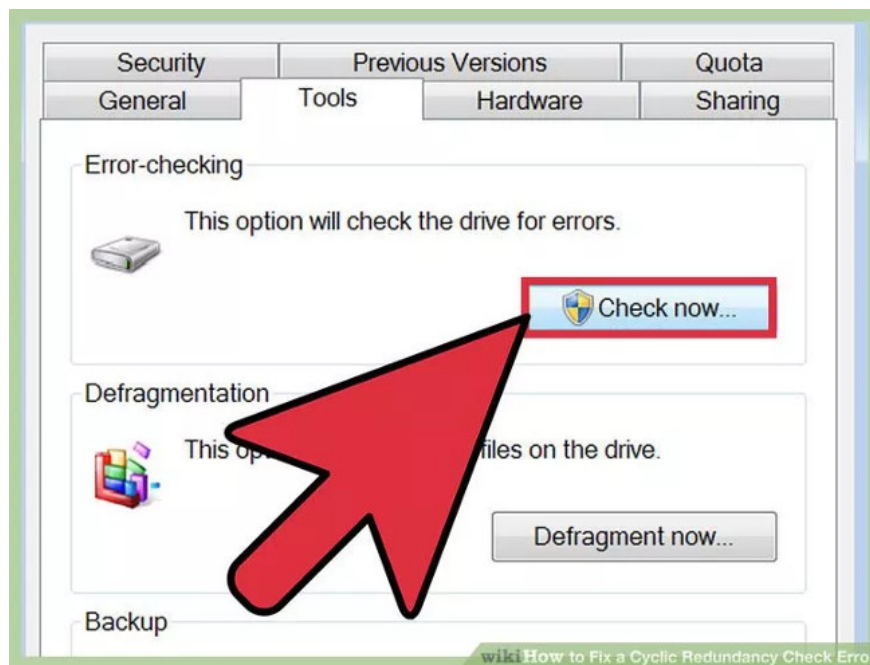
Cyclic Redundancy Check (CRC) is a computer data test method, which is used to check the data on your system hard drive (the drive includes the hard drive on the computer and the optical drive like CD and DVD). Cyclic Redundancy Check can occur for many different reasons, such as Registry errors, an unsuccessful installation program, or incorrect configuration files.

Cyclic Redundancy Check (CRC) is a computer data test method, which is used to check the data on your system hard drive (the drive includes the hard drive on the computer and the optical drive like CD and DVD). Cyclic Redundancy Check can occur for many different reasons, such as Registry errors, an unsuccessful installation program, or incorrect configuration files.

So how can I fix **Cyclic Redundancy Check (CRC) error** on Windows operating system, please refer to the following article of Network Administrator.

1. Run the CHKDSK utility

1. Access CHKDSK utility



CHKDSK, also known as **Check Disk**, is a utility built into the Windows operating system, which helps users scan and repair errors on the drive. In addition, this utility is capable of finding and repairing small numbers of

corrupted files caused by Cyclic Redundancy errors.

Right-click the drive you want to check, then click **Properties** => **Tools** . In Error Checking, click **Check Now** .

1. If your CD or DVD drive suffers from this error, it is most likely caused by a scratched CD drive. Try using a soft cloth to wipe the CD drive before taking steps.
2. Optical drive error (Optical disk) has not been fixed.
3. If you get this error on Mac (rarely happens), try using the built-in Disk Utility and Repair utility to fix the problem.

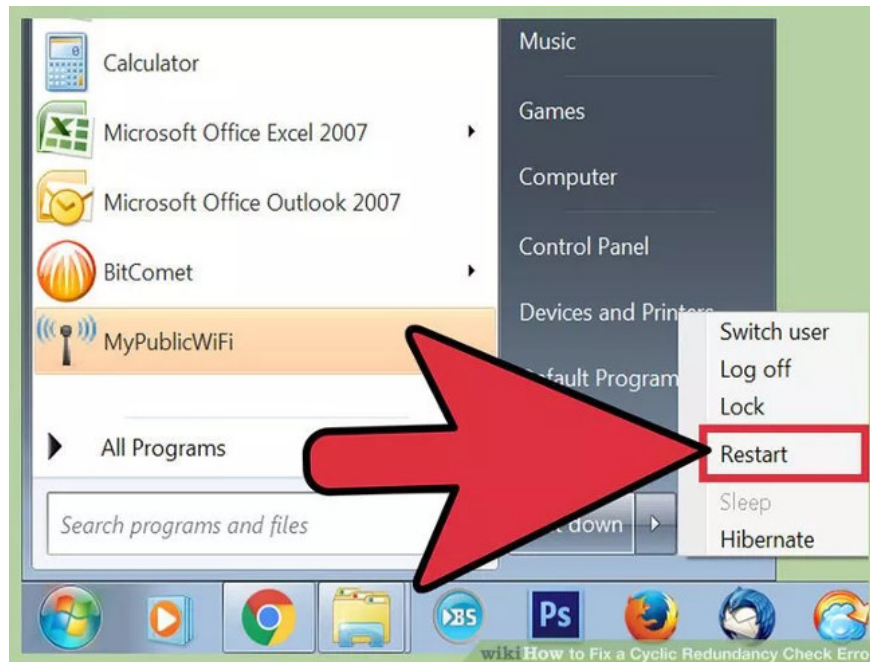
2. Select the scanning platform



Select the platform you want to scan, basic or advanced. By default is selected as basic scan.

The basic scan takes about 15-20 minutes, while the advanced scanning process can take up to an hour.

3. Restart your computer to start the scanning process

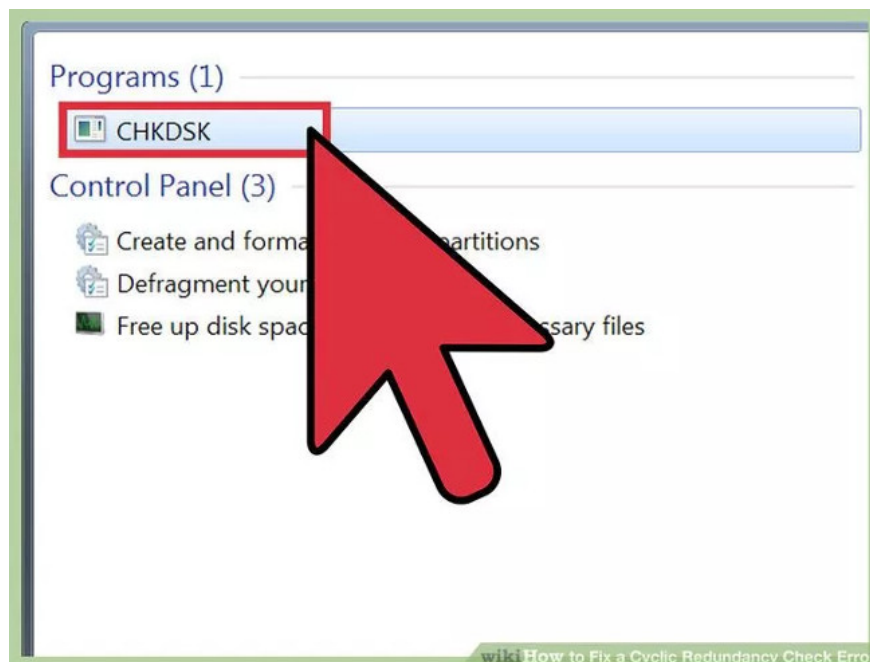


If you scan the primary drive on your computer (the drive you are booting), CHKDSK cannot run immediately and the utility will instead schedule a scan for the next time when you restart the computer.

At this point you can continue to use the computer normally - reboot when you have time.

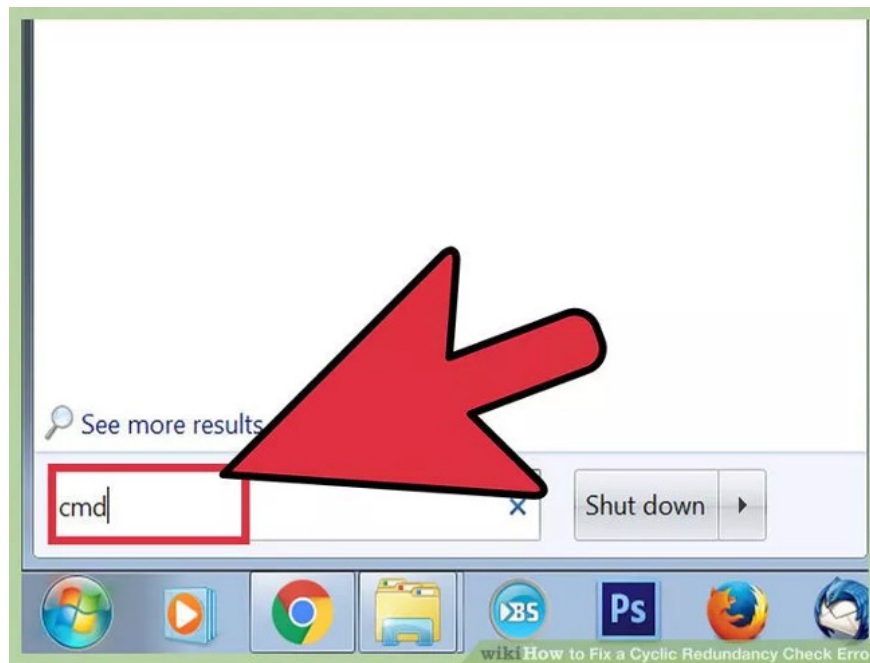
If you suspect the hard drive is about to be replaced, back up the data before scanning.

4. Use another way to access the CHKDSK utility



In some cases when running CHKDSK by clicking **on the utility** , the scan and repair error occurred improperly. So you can try opening CHKDSK otherwise.

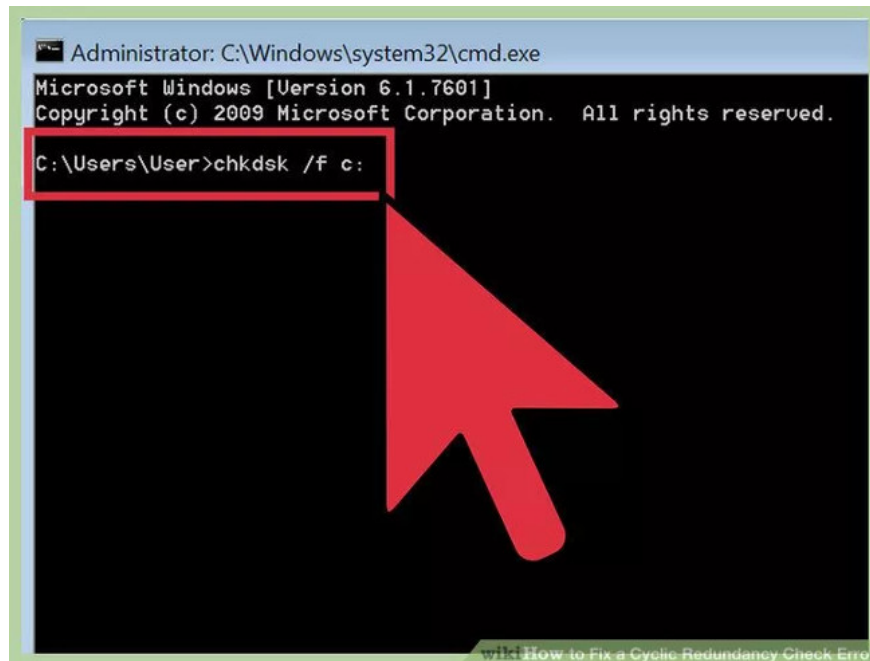
5. Open Command Prompt



In the **Search Start Menu box** , find **Command Prompt** under Accessories.

Note that you must run CHKDSK under Admin to grant permission to execute the scan commands.

6. Enter the command into the Command Prompt window



```
Administrator: C:\Windows\system32\cmd.exe
Microsoft Windows [Version 6.1.7601]
Copyright (c) 2009 Microsoft Corporation. All rights reserved.
C:\Users\User>chkdsk /f c:
```

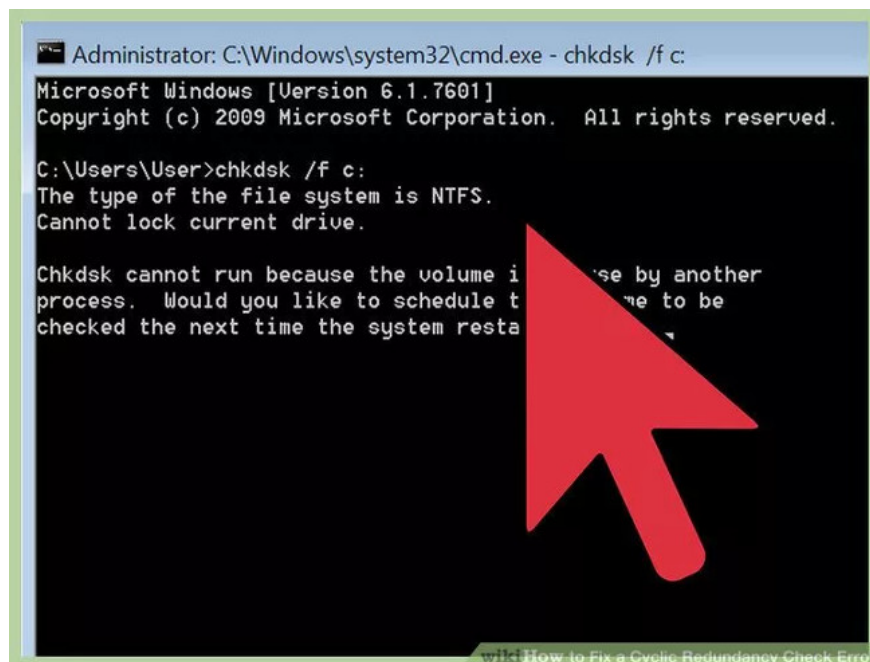
On the Command prompt window, enter the command ' *chkdsk /fx:* ' and press Enter.

Note : in the above command replace x with the drive name you want to scan, then press Enter.

The above command to execute the basic scan.

To perform an advanced scan, enter the command: " *chkdsk /rx:* ". Replace x with the drive name you want to scan.

7. Wait for the scan to complete



```
Administrator: C:\Windows\system32\cmd.exe - chkdsk /f c:
Microsoft Windows [Version 6.1.7601]
Copyright (c) 2009 Microsoft Corporation. All rights reserved.
C:\Users\User>chkdsk /f c:
The type of the file system is NTFS.
Cannot lock current drive.

Chkdsk cannot run because the volume is in use by another
process. Would you like to schedule this volume to be
checked the next time the system restarts? (Y/N)
```

After completing the process, CHKDSK will give you a list of results and restart the computer.

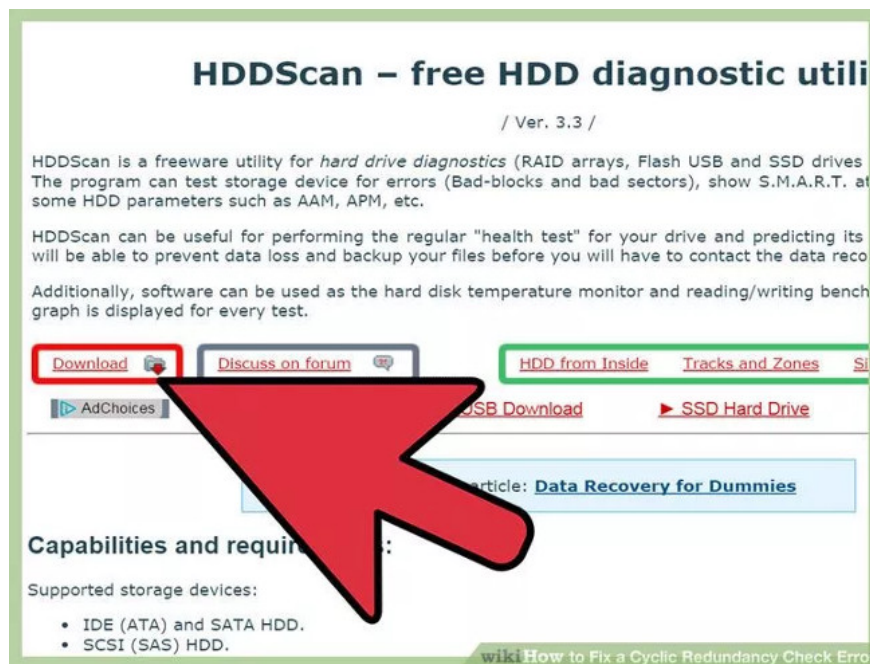
If there are errors that CHKDSK can fix, the utility will fix the error.

If the repair process lasts and does not seem to end it (even if left overnight), chances are there are many damaged files and CHKDSK will not be able to fix these files. If this is the case, try applying the next solution.

Over time, your hard drive may suffer from some minor errors, CHKDSK can fix and fix this problem but cannot solve more serious problems.

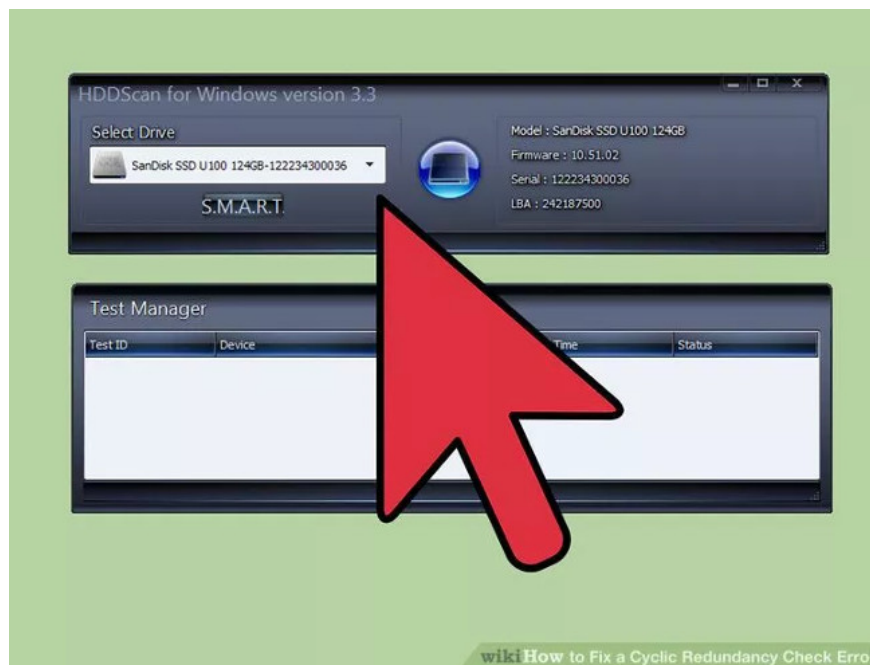
2. Use the 3rd application

1. Install the Disk Utility utility



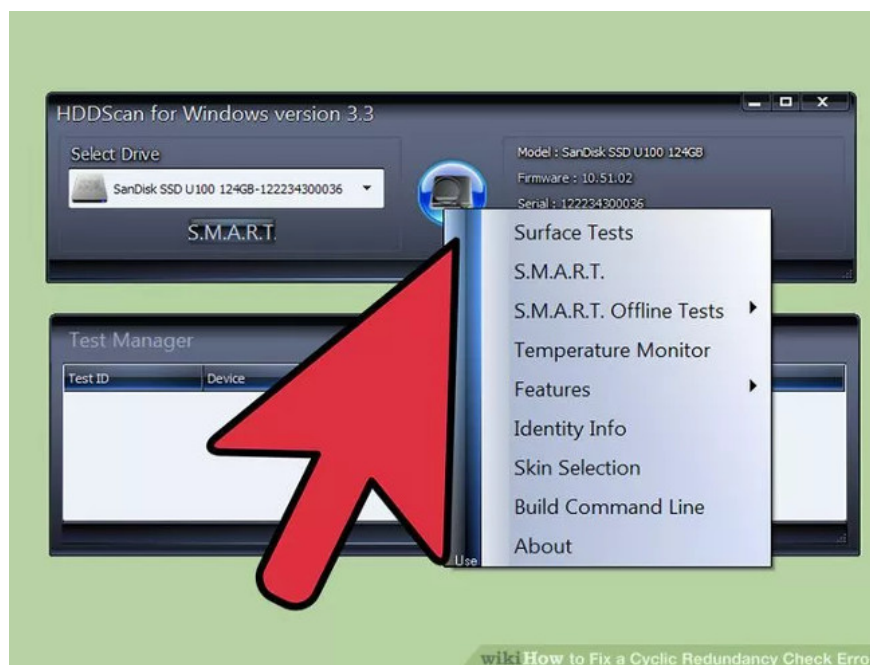
If CHKDSK cannot fix errors on the hard drive, you can resort to the support of 3rd party applications. Tools like HDDScan and SeaTools can replace CHKDSK to fix errors.

2. Run the utility that you downloaded to scan the system



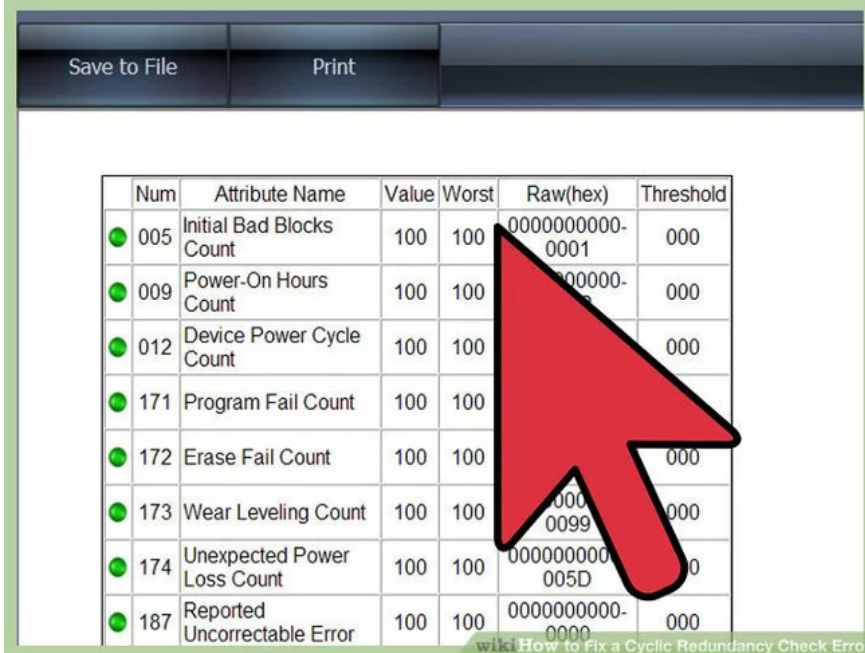
Follow the on-screen instructions to scan the drive and find the **Cyclic Redundancy Check** error.

3. Fix errors



If the scan is still incomplete after 4 hours, it is likely that the hard drive has failed. Cancel the entire scan and backup the data that you can back up.

4. Scan your computer again



The screenshot shows a table with columns: Num, Attribute Name, Value, Worst, Raw(hex), and Threshold. A red arrow points to the 'Raw(hex)' column. The table contains the following data:

Num	Attribute Name	Value	Worst	Raw(hex)	Threshold
005	Initial Bad Blocks Count	100	100	0000000000-0001	000
009	Power-On Hours Count	100	100	00000000-0000	000
012	Device Power Cycle Count	100	100	00000000-0000	000
171	Program Fail Count	100	100	00000000-0000	000
172	Erase Fail Count	100	100	00000000-0000	000
173	Wear Leveling Count	100	100	00000000-0099	000
174	Unexpected Power Loss Count	100	100	00000000-005D	000
187	Reported Uncorrectable Error	100	100	0000000000-0000	000

The process takes a few minutes and ensures that there are no errors on your computer.

Refer to some of the following articles:

1. Guide to quickly fix "Inaccessible Boot Device" error on Windows 10/8/7 and Windows Vista
1. Automatic timer to turn on Wifi after 1 hour, 4 hours or 1 day on Windows 10
1. How to disable 1 or more any key on Windows 10 keyboard?

Good luck!

You finished reading the article "**Quick fix Cyclic Redundancy Check error**" edited by the [TipsMake](#) team. We hope this article has provided you with many useful tech tips and tricks. You can search for similar articles on tips and guides. Thank you for reading and for following us regularly.