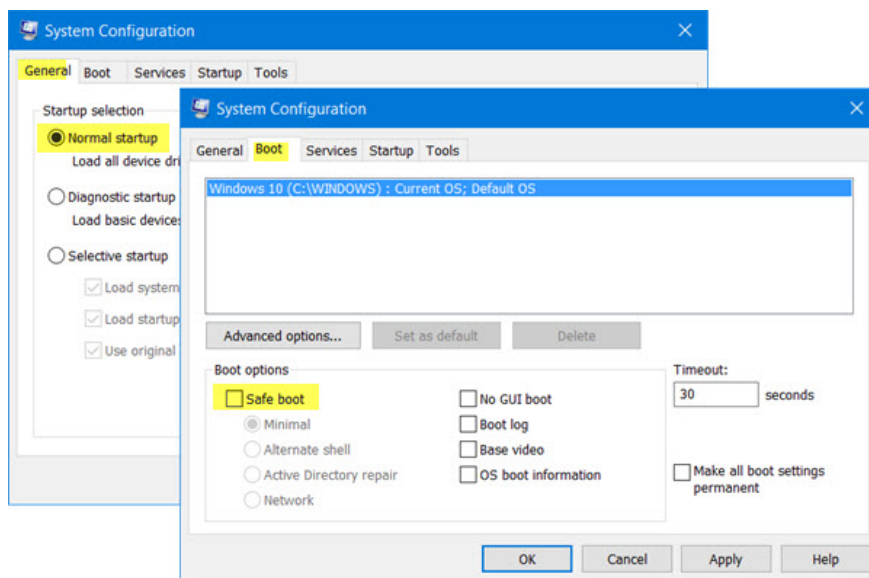


Quick fix computer error Windows 10/8/7 crashes, Safe Mode can not be escaped

Usually we start our computer in Safe Mode to fix errors. However in some cases you sometimes start your computer in Safe Mode and the computer hangs. So how to fix the error in this case, please refer to the following article of Network Administrator.

Usually we start our computer in Safe Mode to fix errors. However in some cases you sometimes start your computer in Safe Mode and the computer hangs. So how to fix the error in this case, please refer to the following article of Network Administrator.



Safe Mode is not exited

To fix a Windows 10/8/7 computer failure from Safe Mode, follow the steps below:

1. When in Safe Mode, press **Windows + R** key combination to open the Run command window.

Next enter **msconfig** into the Run window and press **Enter** to open the System Configuration Utility.

In the System Configuration Utility window, under the **General tab**, make sure that the **Normal startup** option is selected. Next on the **Boot tab**, make sure the **Safe Boot** option is under the Unchecked Boot item.

Finally click **Apply / OK** and restart your computer.

2. If you have applied the above method and still cannot fix the error, follow the steps below:

When in Safe Mode, press the **Windows + R** key combination to open the Run command window. Then enter **cmd** and wait, press **Ctrl + Shift key** then press **Enter** to open Command Prompt under Admin.

On the Command Prompt window, enter the command below and press Enter:

```
bcdedit / deletevalue {current} safeboot
```

Finally restart your computer and check if the computer has started in Normal Mode.

The BCDEdit / deletevalue command will delete or remove the boot options (if available) from the Windows boot configuration data store (BCD). You can use the BCDEdit / deletevalue command to remove the option added with the BCDEdit / set command.

Refer to some of the following articles:

1. Start Windows 7, 8, 10 in Safe Mode without F8 key
1. All problems with starting Windows in Safe Mode
1. Instructions to bring Safe Mode to the standard Boot Menu on Windows 8 and 10

Good luck!

You finished reading the article "**Quick fix computer error Windows 10/8/7 crashes, Safe Mode can not be escaped**" edited by the [TipsMake](#) team. We hope this article has provided you with many useful tech tips and tricks. You can search for similar articles on tips and guides. Thank you for reading and for following us regularly.