

Processing laptops from desktops

Using components from an old desktop machine and some other devices, the boy nicknamed the Beetle has made himself a pretty laptop, which is rated more beautiful than the model that Atari made many years ago.

Using components from an old desktop machine and some other devices, the boy nicknamed the Beetle has made himself a pretty laptop, which is rated more beautiful than the model that Atari made many years ago.



This homemade laptop was named Atari 1500XL by Beetle. Widescreen 14 inch, CF card reader to receive data (the machine does not have an internal hard drive), S-Video, 4x operating system, integrated Stereo speakers.



The machine looks from the horizontal side.



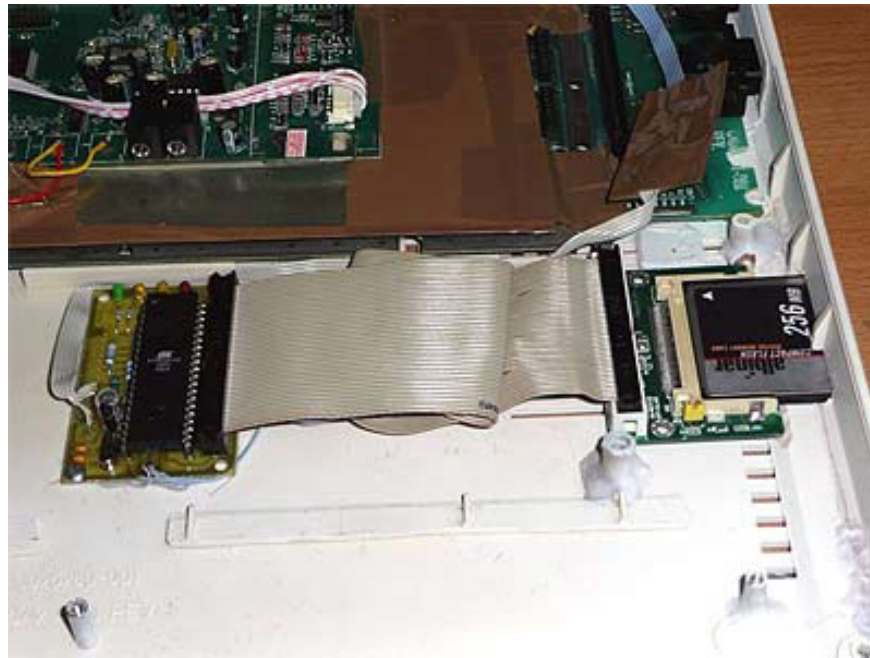
Atari 1500XL is disassembled to discover the "mystery" inside.



Part of the motherboard and laptop components.



A large enough slot is inserted to hold the CF card.



Communication and adapter for CF card.



When installed it looks like this.



The base of the laptop when removing the keyboard. The 12,300mAh NiMH batteries provide energy for the device to run 2.4 hours continuously. SIO2IDE communication device, SRAM 512 KB. See more here.

Viet Toan

You finished reading the article "**Processing laptops from desktops**" edited by the [TipsMake](#) team. We hope this article has provided you with many useful tech tips and tricks. You can search for similar articles on tips and guides. Thank you for reading and for following us regularly.