

Printer error says Ready To Print but cannot print and how to fix it

In the process of printing, one of the most common errors is that the printer says Ready To Print but cannot print. Here are instructions on how to fix the above error.

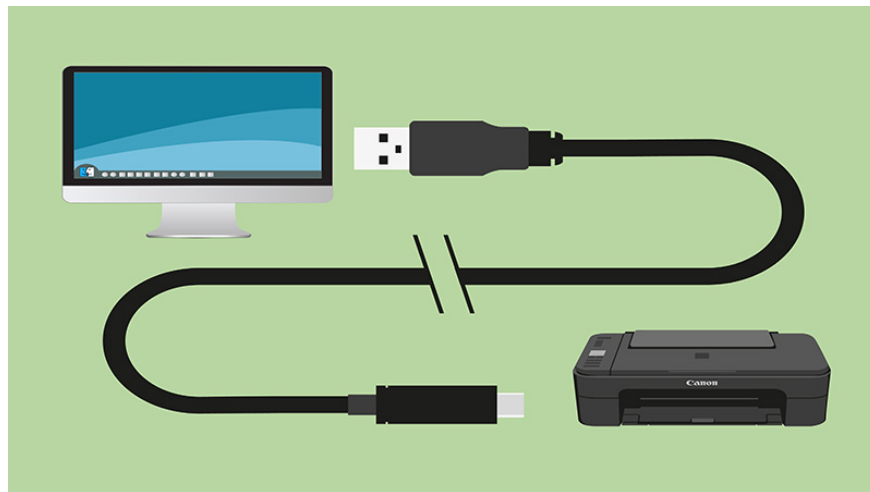
In order to use the printer effectively, you need to have a good understanding of the tips and controls for how to make it work in the best way. One of the common errors is that the printer says Ready To Print but cannot print. Below is a guide to how to fix this error quickly so as not to be affected by the working process.

1. Error due to cable connection

This is the part that connects the computer to the printer, so when the connection cable has problems, the machine will not recognize the print job even though **Ready To Print is reported**. So, you need to check the cable first if you encounter the above situation.

If you find that the connection is loose or not connected to a stable power source, quickly fix it and start over.

If the cable is too old or damaged, it is best to replace it with a new connection cable.

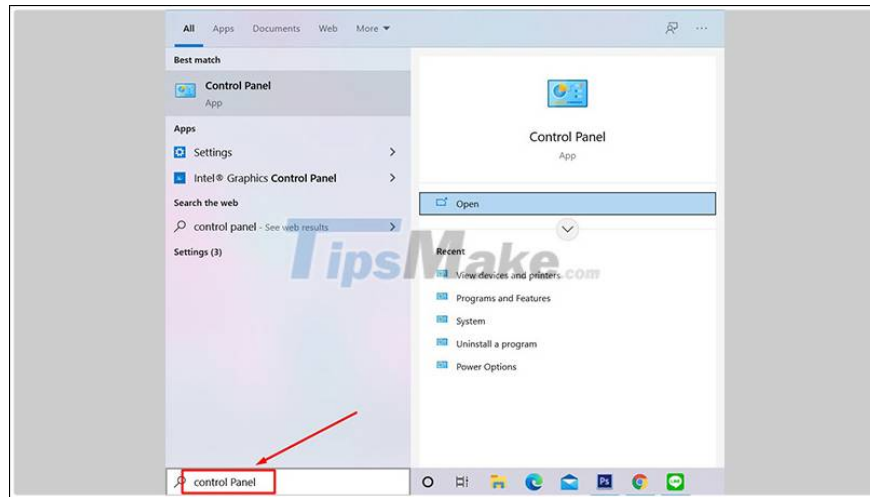


2. There are too many print jobs in the machine

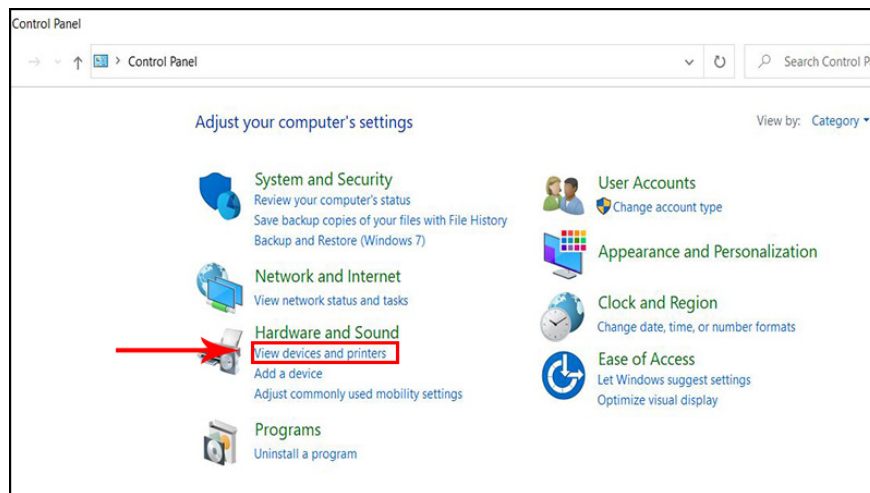
This problem often occurs, especially in companies **that share printers**. This is because a printer used by many people causes the print volume to queue so long in the queue that the printer cannot load and causes errors.

At this point, you will proceed to check, delete and move files so that your documents are no longer queued. Follow these steps:

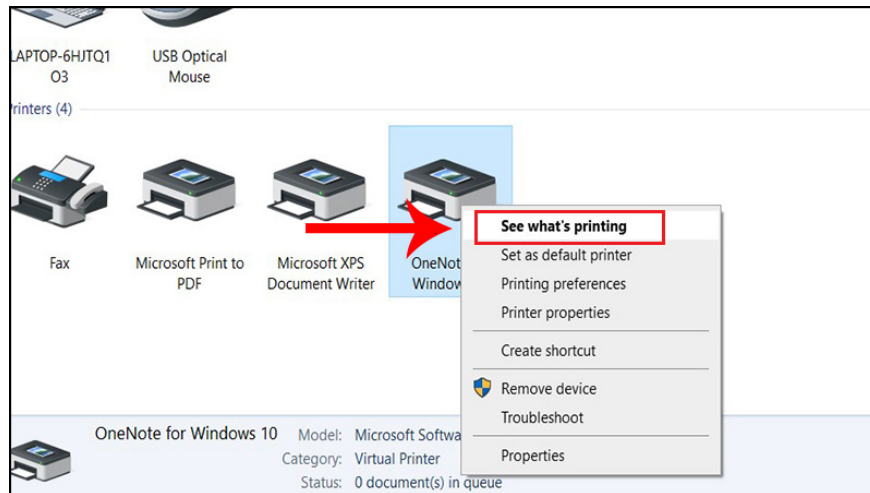
Step 1 : Open the **Start Menu** > Search and open **Control Panel** .



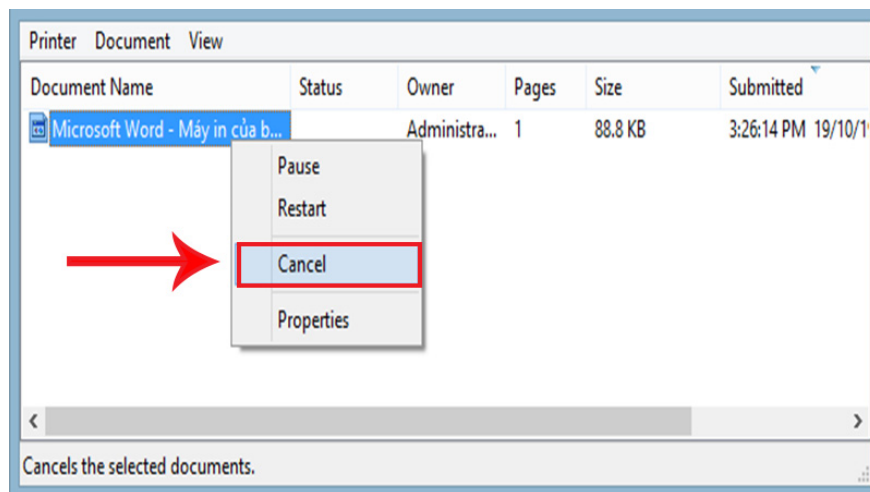
Step 2 : In the **Hardware and Sound** section , click **View devices and printers** .



Step 3 : Navigate to the printer device you are using> Right click> Select **See what's printing** .



Step 4 : Select the files you want to delete> Click **Cancel** .



3. The printer has not received the correct print job

For some reason that your statement is not receiving the printer, causing **notification Ready To Print virtualization** , which makes you think the machine has received the print job.

To resolve this situation, check the print job status on your computer, if there is no result, **reset** the printer and start again.

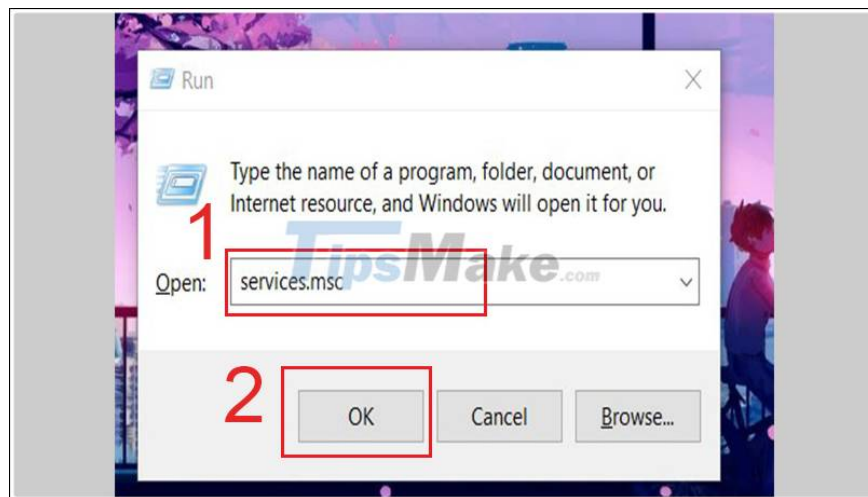


4. Restart the Print Spooler process

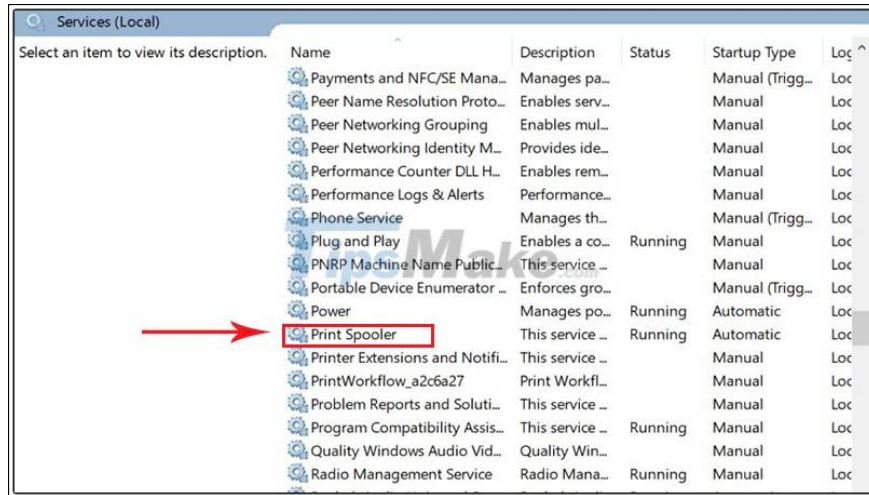
Restart the printer process on **Windows** with the following instructions:

Step 1: Press the **Windows + R** key combination to open the **Run** dialog box .

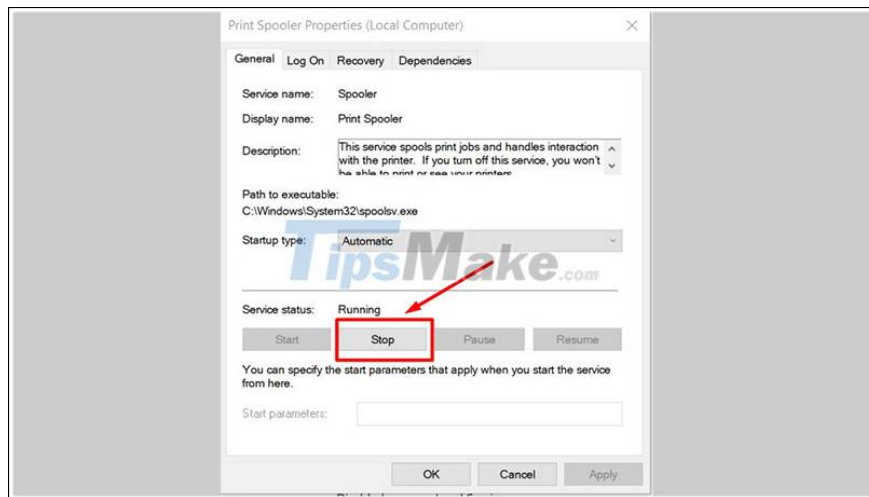
Step 2 : Enter the box Open **services.msc** > Press **Enter** or Click the box **OK** .



Step 3 : Look in **Name** > Click **Print Spooler** .

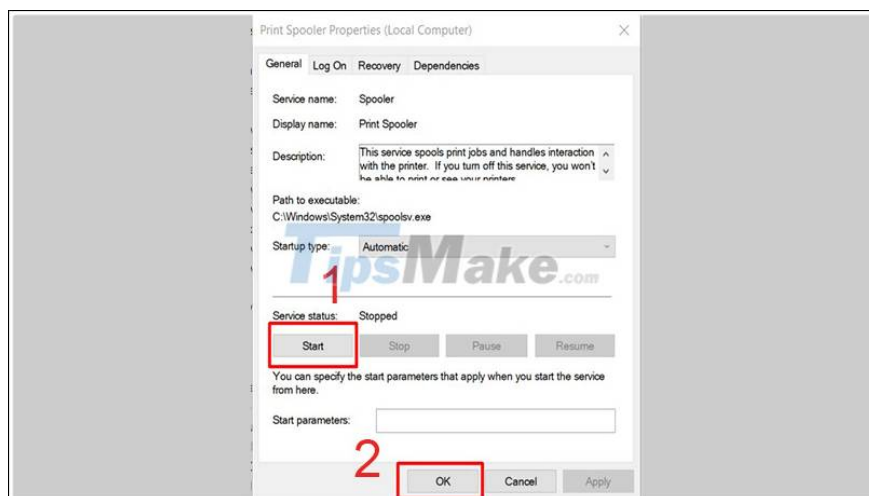


Step 4 : In Service status , select **Stop** .



Pause Print Spooler mode

Step 5 : Click **Start** > Select **OK**.



After these steps, our printer will print back to normal and the printer's Ready To Print message is not printed but no more.

With the causes of the printer saying "Ready to print but not printing" and how to fix it that we have revealed through the above article, hope to help you know more useful things in the process. Printing. Wish you all success!

You finished reading the article "**Printer error says Ready To Print but cannot print and how to fix it**" edited by the [TipsMake](#) team. We hope this article has provided you with many useful tech tips and tricks. You can search for similar articles on tips and guides. Thank you for reading and for following us regularly.
