

Printer error not receiving print job - Cause and effective remedy

You want to fix the problem of not receiving the printer's print job but don't know how to do it. [Click here](#) to know about the cause and how to fix the error

The printer is a useful device and is playing an increasingly important role. However, some problems are inevitable when using the printer, one of which is the error that the printer does not receive print jobs. The following article will provide you with information about the cause and how to effectively fix this error. Stay tuned!

Some common reasons the printer does not receive print jobs :

1. Your computer has an operating system error.
2. The cable connecting the printer to the computer may be damaged or loose.
3. The printer is not powered on.
4. The printer driver error will also prevent the printer from accepting the print job.
5. Error due to IP on your printer.

1. Error due to cable connection

After a while, your connection cable may be damaged or broken due to physical impacts, so check the connection cable regularly to avoid the printer not receiving print jobs.

To check the connection cable, you should prepare a similar cable, if the new cable is running well, make sure your printer is completely free of problems, the cause of the error comes from the old cable. friend.



2. Error caused by computer operating system

The printer does not receive a print job may be caused by an operating system error on your computer, although this is quite rare, you should not ignore this cause.

When you encounter this situation, please restart your computer to fix the error.



3. The printer fails to turn on the power

Sometimes the printer does not receive a print job just because you have not turned it on, have not plugged in the power, or the connection cord has been disconnected from the printer. So you should check the electrical connections before trying to fix other parts.



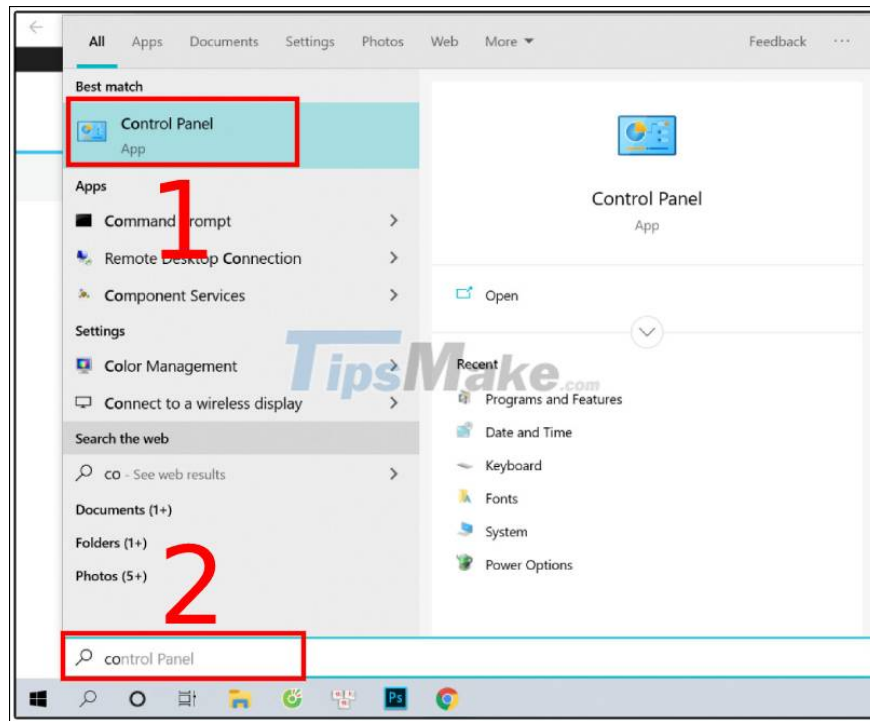
4. Due to the printer jam

Maybe the printer's refusal error might be caused by a paper jam in your printer. When you encounter this error, simply remove the jammed paper, however, you must remove all of the paper thoroughly so that the error does not continue.

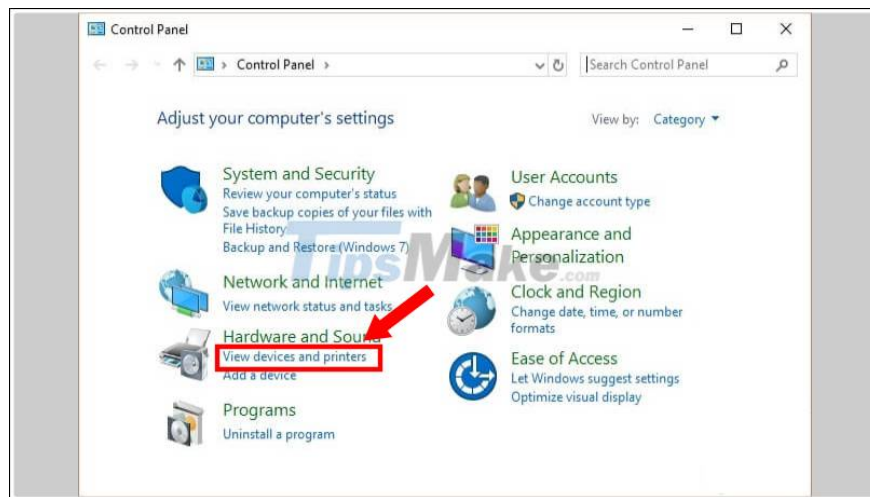


5. Let Windows fix itself by Troubleshoot

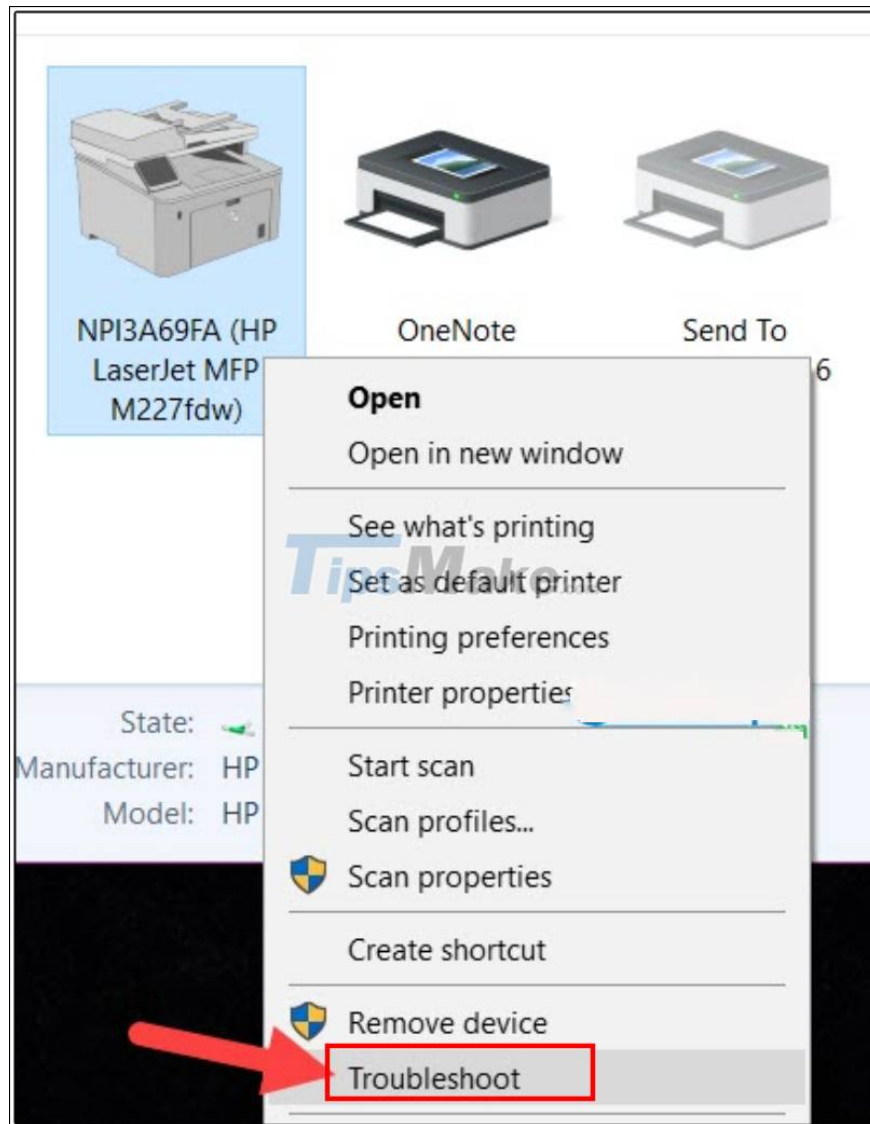
Step 1 : Open the **Start Menu** on your computer, laptop > Search and open **Control Panel** .



Step 2 : In the **Hardware and Sound** section , select **View devices and printers** .

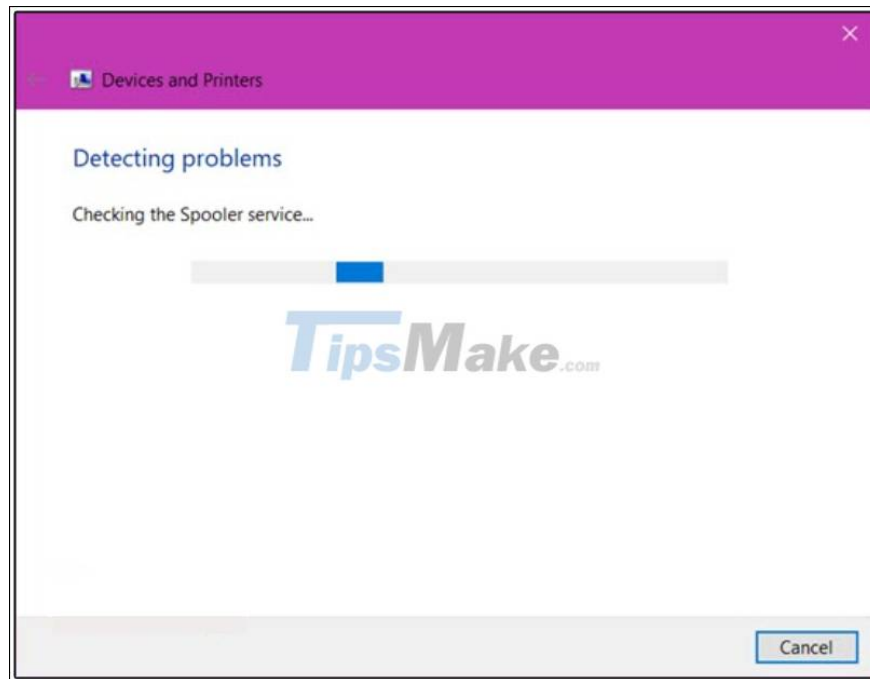


Step 3 : **Right-click** on the printer device to fix the error> Select **Troubleshoot** .

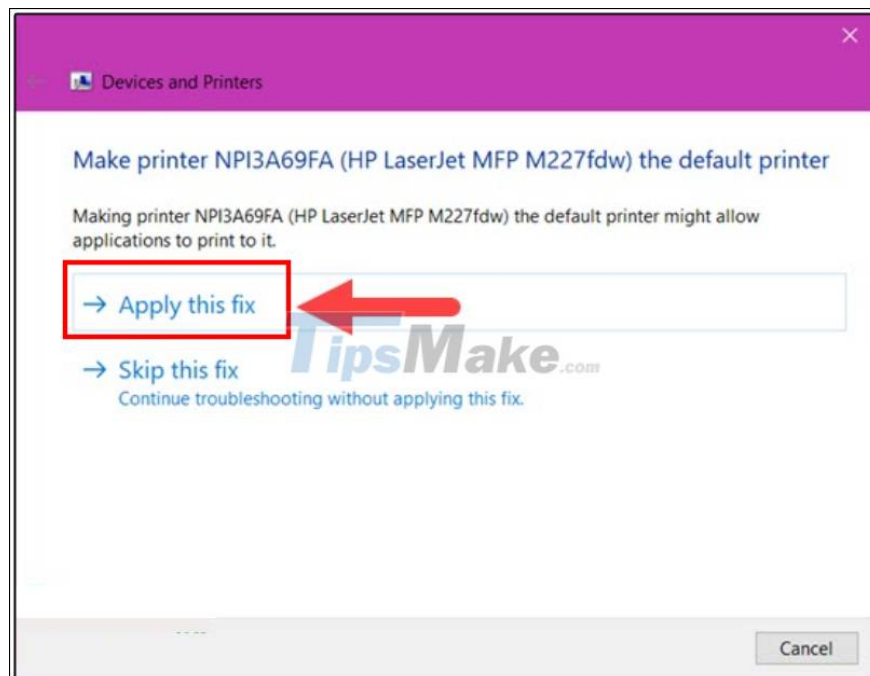


Select Troubleshoot to fix the error

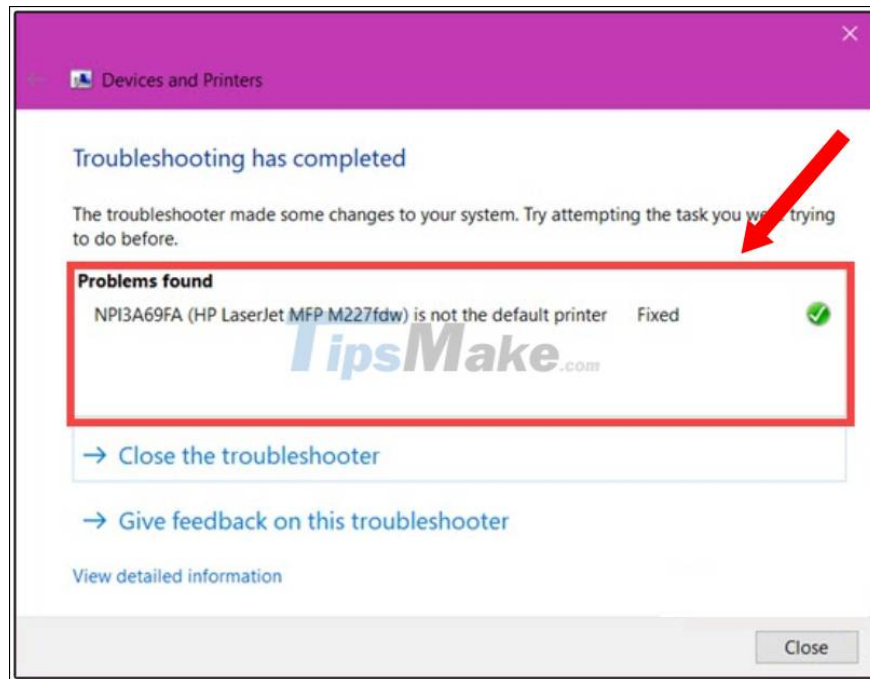
Step 4 : The Windows system automatically checks the entire process and fixes errors.



Step 5 : Click **Apply this fix** when the message appears.



Step 6 : When there is **a green check mark** , the error correction of the printer not receiving the print job has been completed.

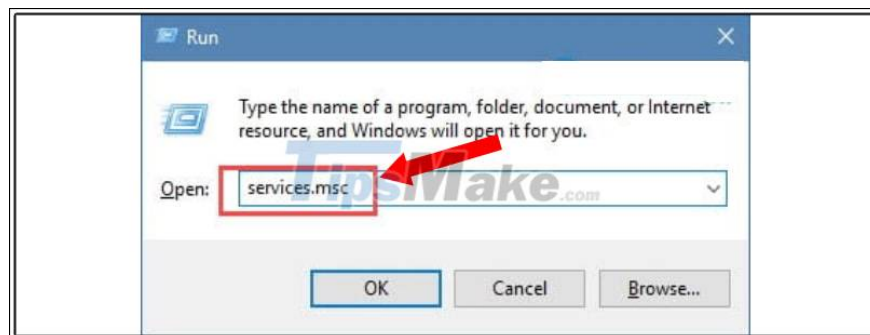


Complete the error correction process

Note : Your printer error may appear differently than what is shown, depending on the error you made.

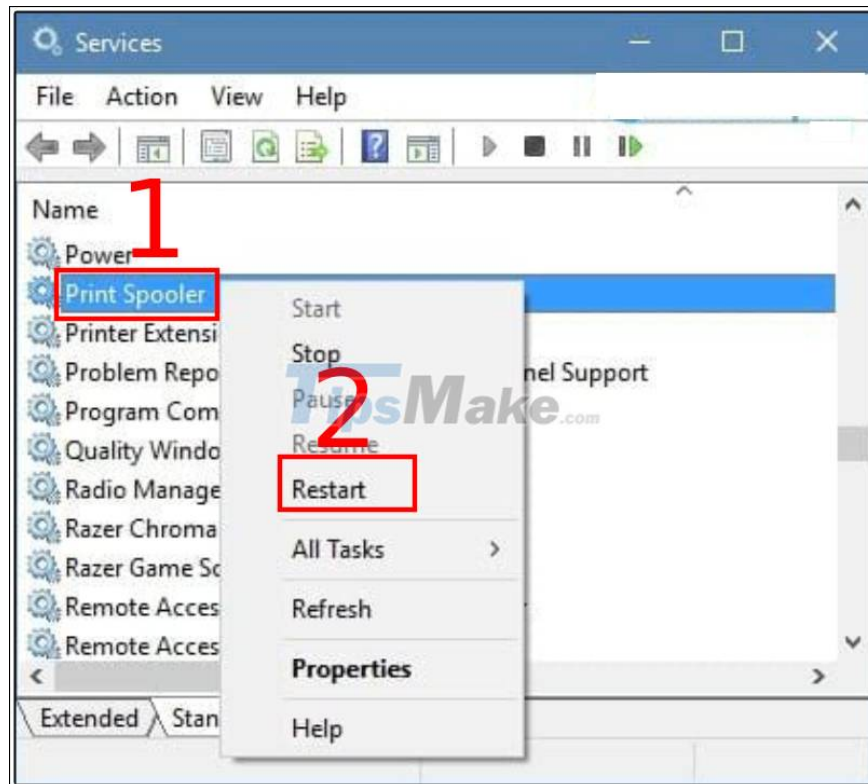
6. Restart the Print Spooler process

Step 1 : Press the **Windows + R** key combination > Type **services.msc** in the box **Open** > Press **Enter** .



Access the Run dialog box and enter the command

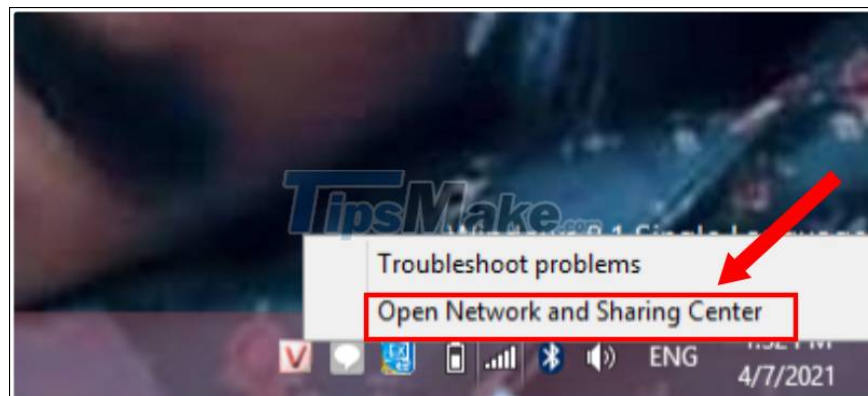
Step 2 : Right-click at **Print Spooler** > Select **Restart** .



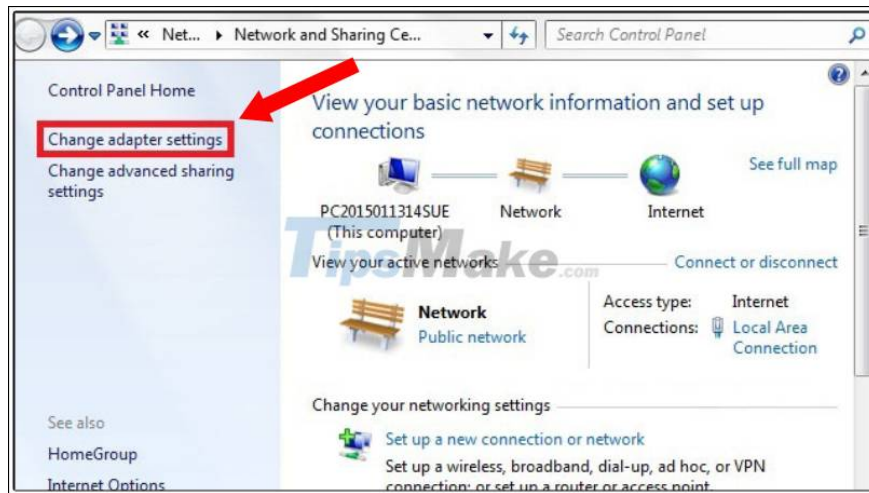
Select restart to restart the Print Spooler process

7. The printer does not receive the job due to an IP error on the printer

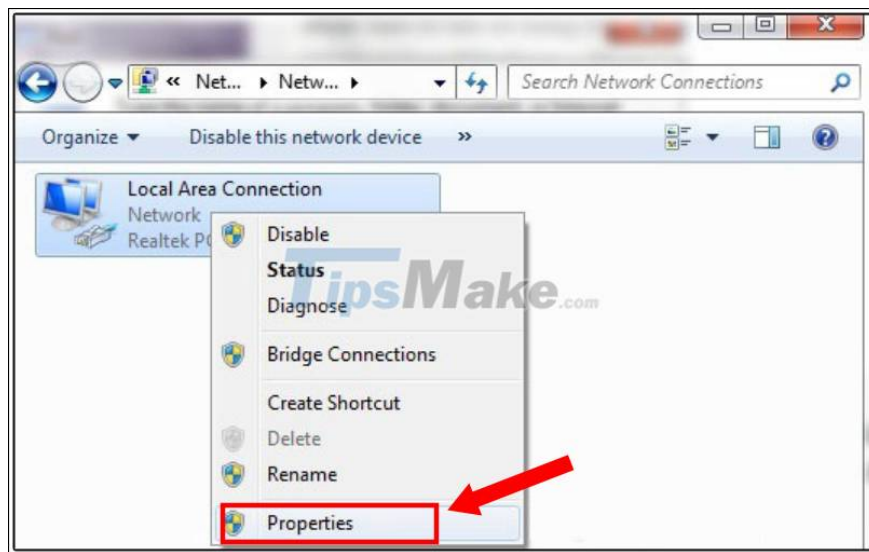
Step 1 : Right-click on the network icon > Select **Open Network and Sharing Center** .



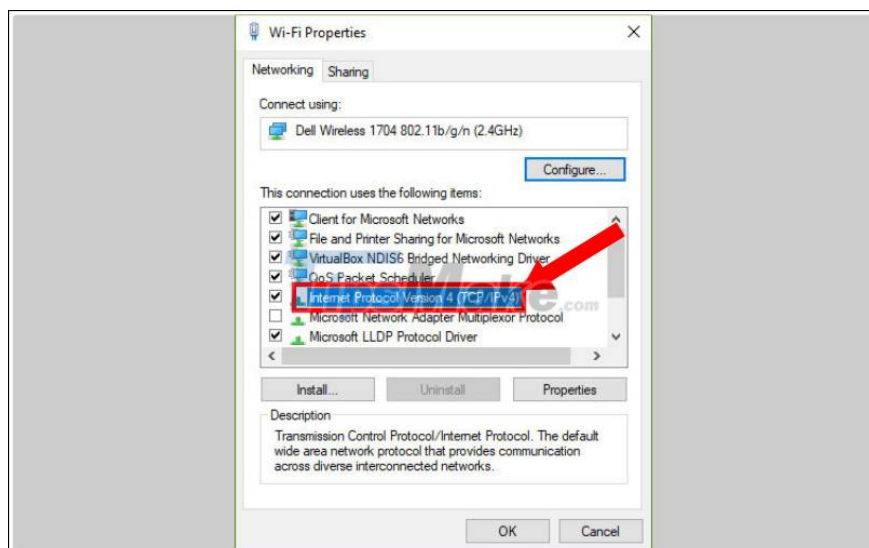
Step 2 : Select **Change Adapter Settings** to access **Local Area Connection** .



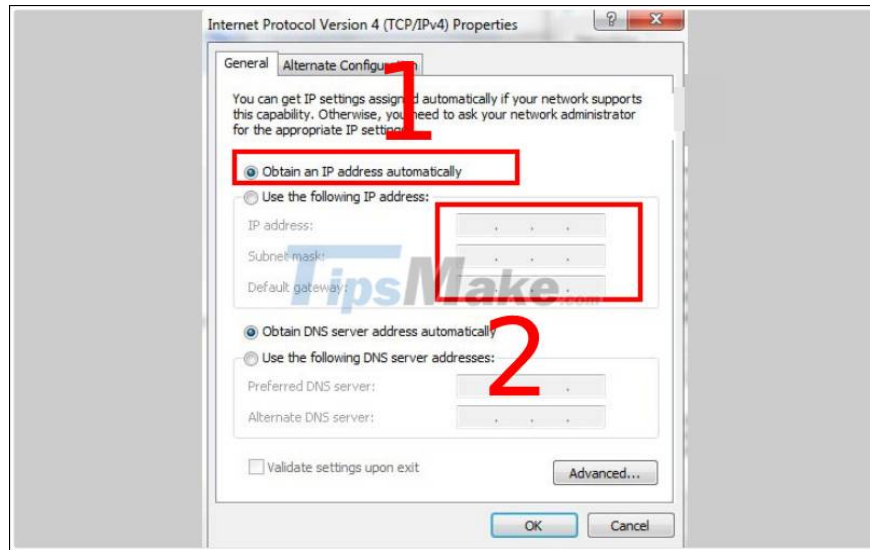
Step 3 : Right-click on Local Area Connection > Select Properties .



Step 4 : Place your mouse over at Internet Protocol Version 4 (TCP / IPv4) to edit the IP address .



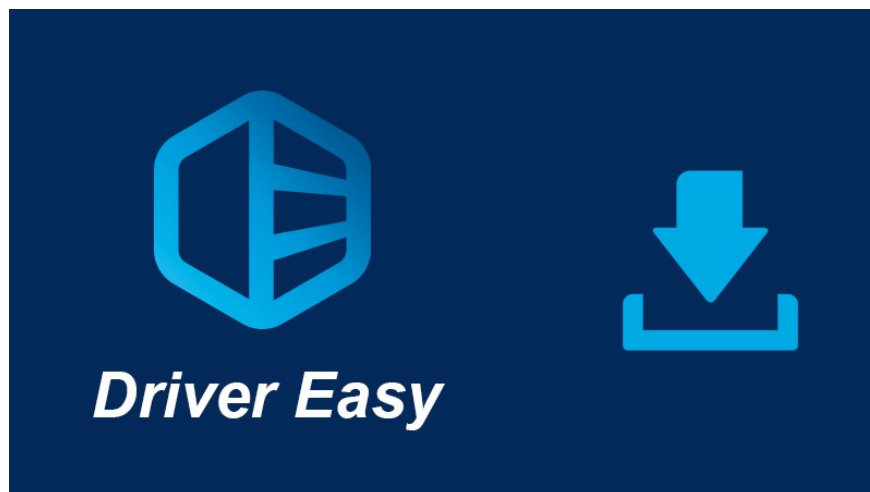
Step 5 : Select **Obtain an IP address automatically** to set IP automatically.



8. Update the printer driver

Printer driver is too old is one of the causes of not receiving print job error. To overcome this situation, you should update the driver for the machine more often.

Commonly used software is Driver Easy, you can download to update the driver for the devices [HERE](#) .



Hopefully the above article can help you overcome the problem of not receiving the print job of the printer you are using. Hope you are successful. Thanks for watching!

You finished reading the article "**Printer error not receiving print job - Cause and effective remedy**" edited by the [TipsMake](#) team. We hope this article has provided you with many useful tech tips and tricks. You can search for similar articles on tips and guides. Thank you for reading and for following us regularly.