

PowerPoint cannot insert MP4 videos

If you want to make a presentation, many people will think of PowerPoint. But PowerPoint cannot insert MP4 videos, making the operation difficult

If you want to make a presentation, many people will immediately think of PowerPoint. However, PowerPoint's inability to insert MP4 videos makes operations difficult. If you are also experiencing the same problem when using PowerPoint, please refer to TipsMake's information immediately!

Nowadays, using PowerPoint for presentations is extremely popular. Not only can users insert text and images, but they can also insert videos into PowerPoint. This will help make the presentation much more professional and authentic. But even so, many people encounter the situation where PowerPoint cannot insert MP4 videos. To know how to handle this problem in PowerPoint, please refer to the following information.



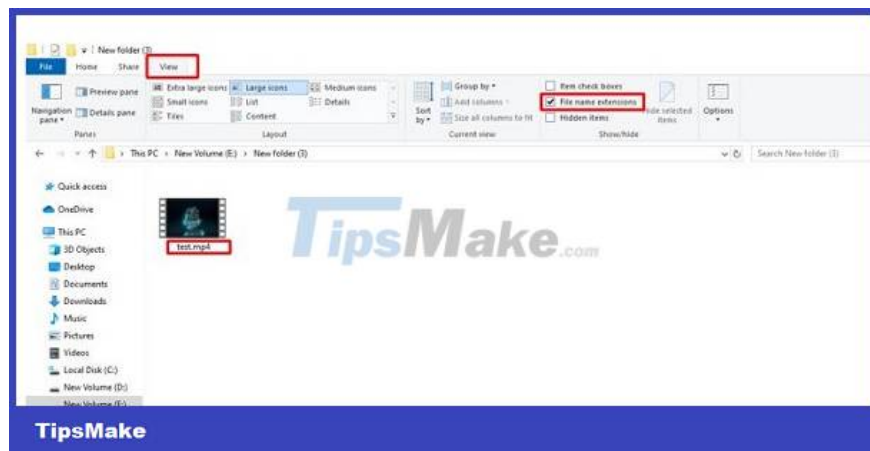
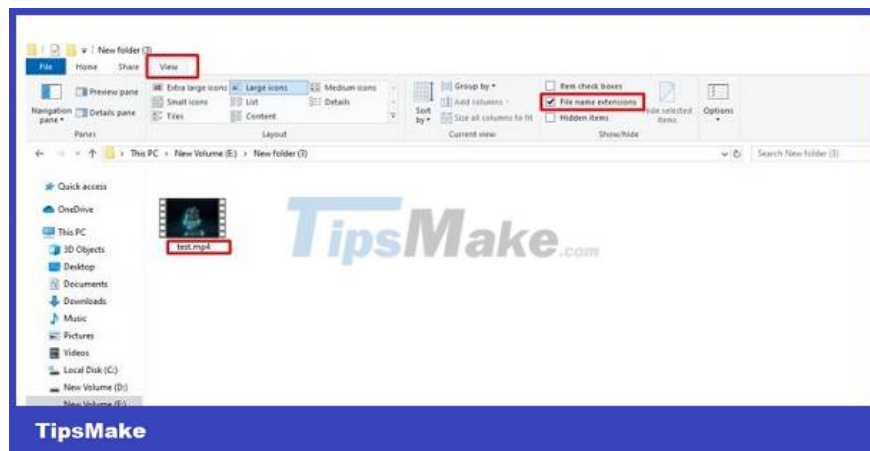
Causes and solutions when PowerPoint cannot insert MP4 videos

There are quite a few factors that can lead to you not being able to insert an mp4 video into PowerPoint. However, the most common cause is due to PowerPoint's video decoding process. There is a burst frame level that is not available for some MPEG-2 videos.

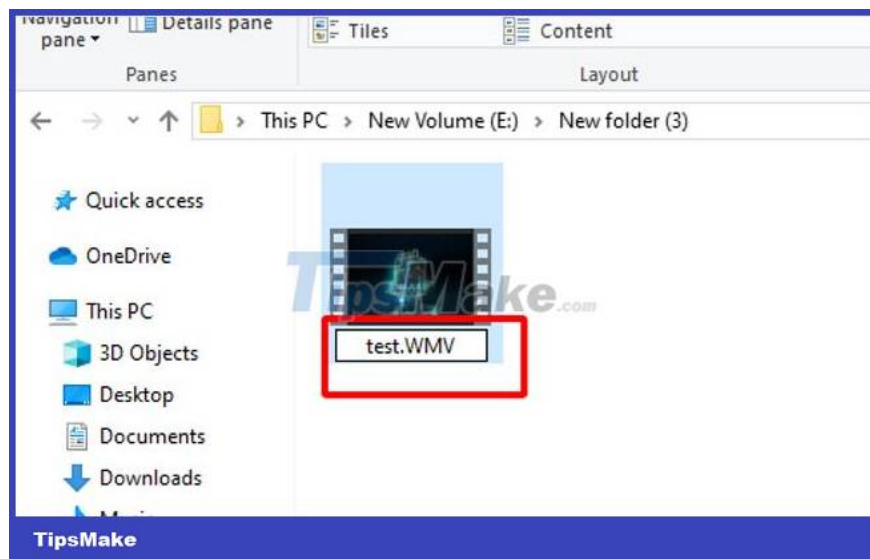
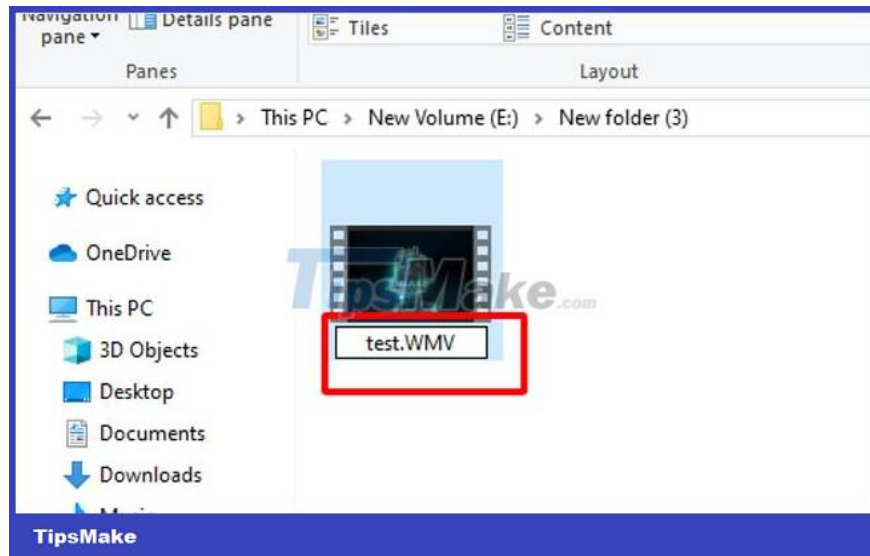
How to handle when you cannot insert mp4 video into PowerPoint

Not being able to insert a video into PowerPoint can make your presentation less professional. So try following the steps below to quickly insert videos into PowerPoint.

1. B1: Check what format the video is in by clicking the View tab in File Explorer and then selecting File name extensions. At this time, the video tail will display more information about the video format.



1. Step 2: Right-click on the video you want to insert into PowerPoint but are encountering an error. Then click on Rename to change the extension for the video.
2. Step 3: Delete the .MP4 part and replace it with .WMV.



1. Step 4: When the notification panel appears, click on yes.

After performing the steps above, you have successfully changed the video file extension. Now comes the process of checking whether you can insert the video into PowerPoint or not.

How to see if you can insert a video into PowerPoint or not

1. Step 1: Open PowerPoint, select Insert, then select media
2. Step 2: Click on the video section and then continue to select the Video on My PC section.



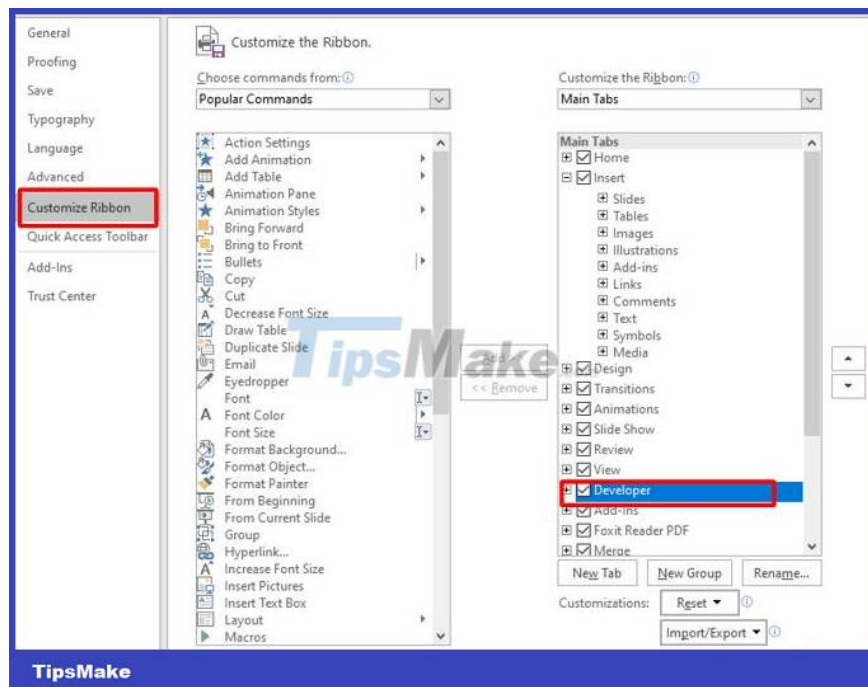
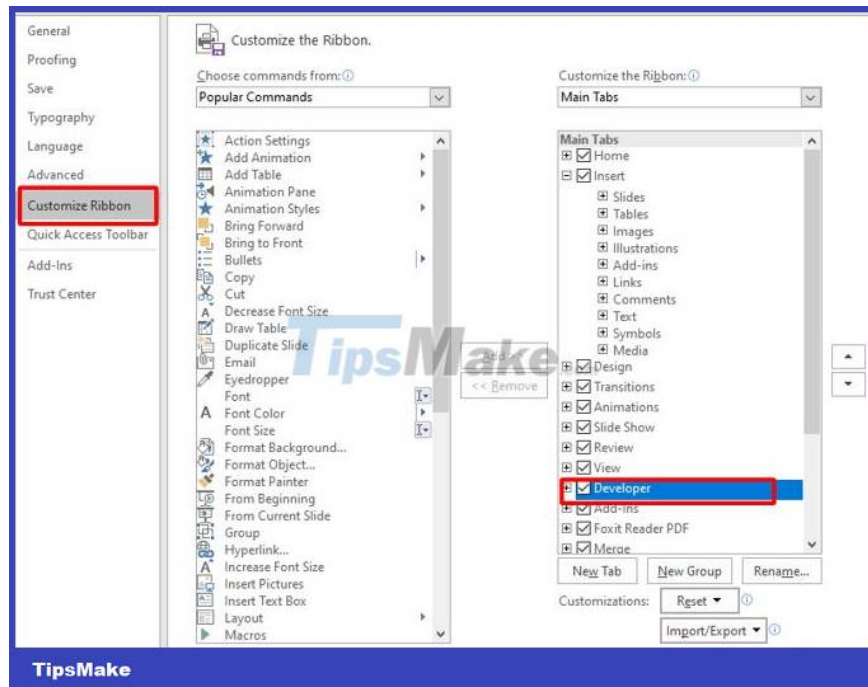
1. Step 3: Select the video you changed the extension to then click insert.

So you can quickly insert MP4 videos into PowerPoint.

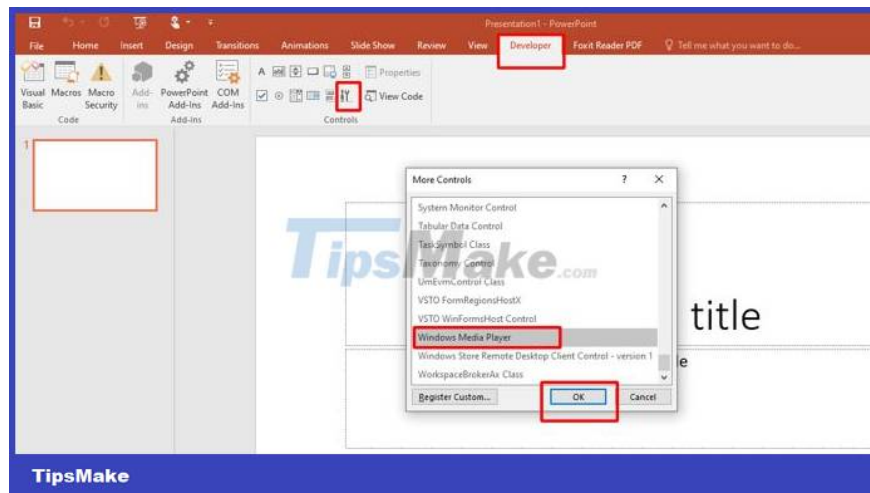
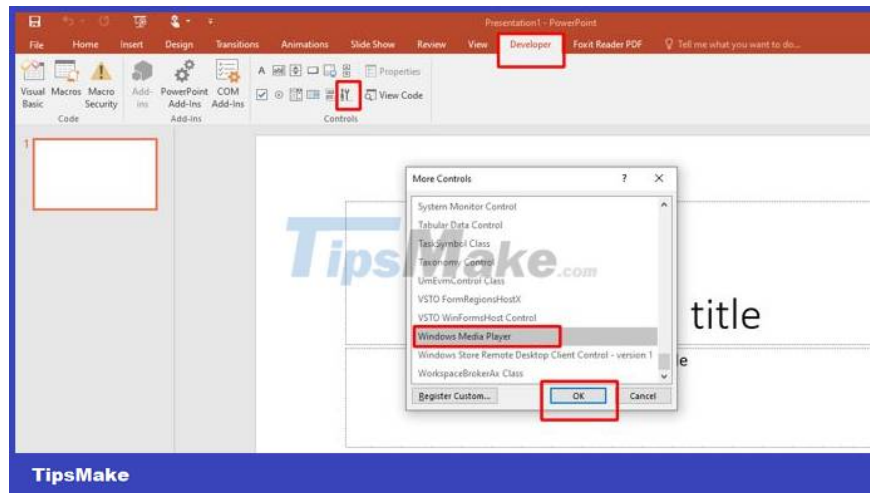
How to insert windows media player into PowerPoint

Next, I will show you how to insert windows media player into PowerPoint. This is also information that you should understand if you want to become a PowerPoint master.

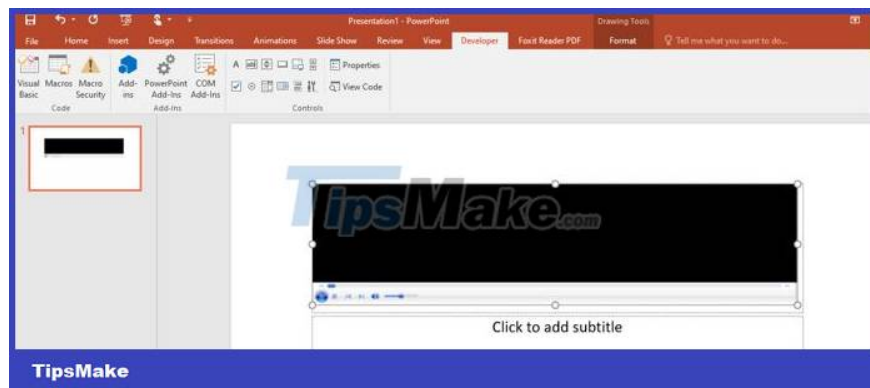
1. B1: Open PowerPoint and then click on the file item.
2. Step 2: Click on options.
3. Step 3: Click on Customize Ribbon in the left pane.
4. Step 4: Tick Developer and press ok.

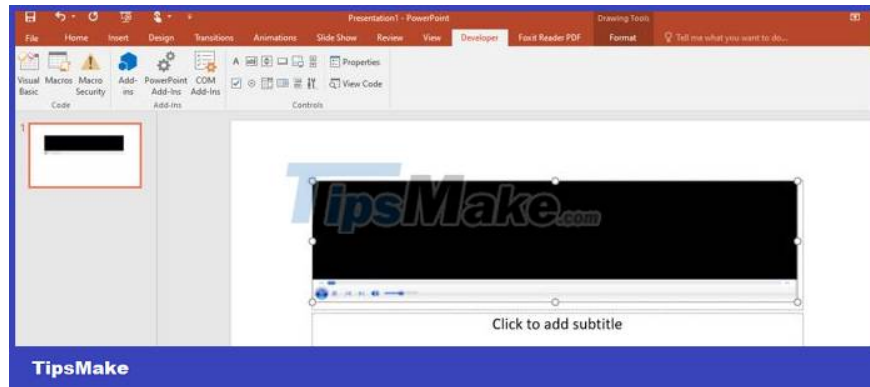


1. Step 5: Return to PowerPoint's main interface, you will now see the DEVELOPER section. Now click on Controls.
2. Step 6: When the Controls panel appears, scroll down and select Windows Media Player and select ok.

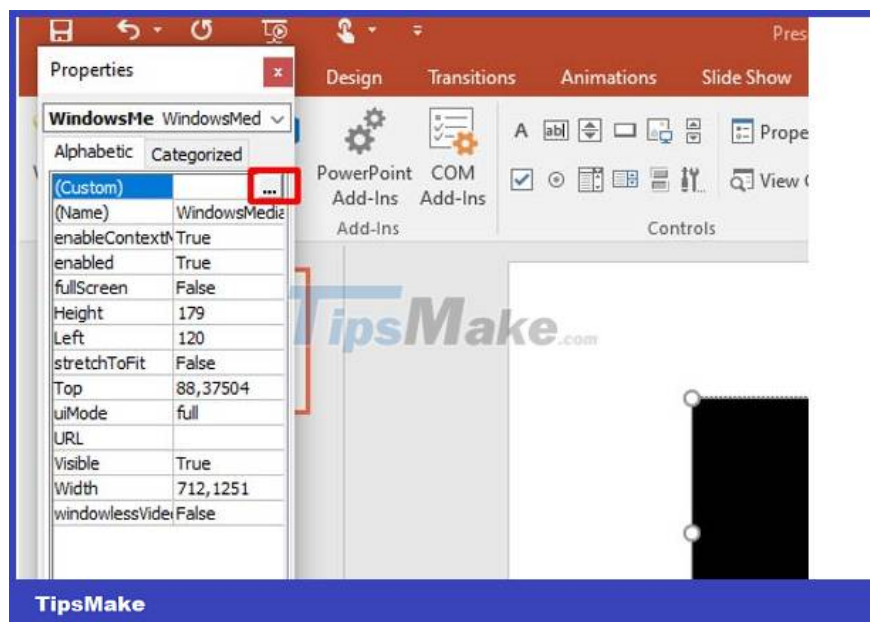


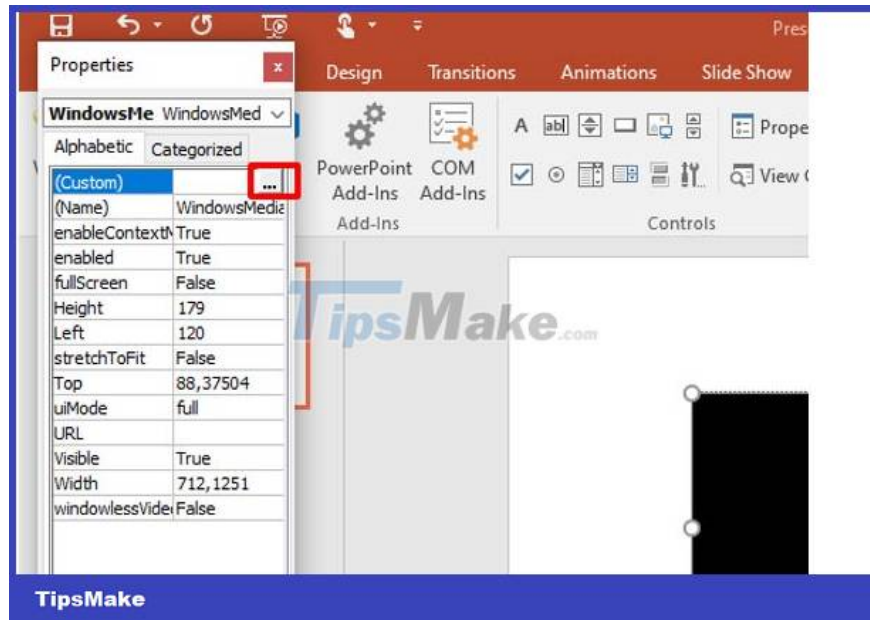
1. Step 7: Drag and drop the mouse to align it to the video frame you want to place.



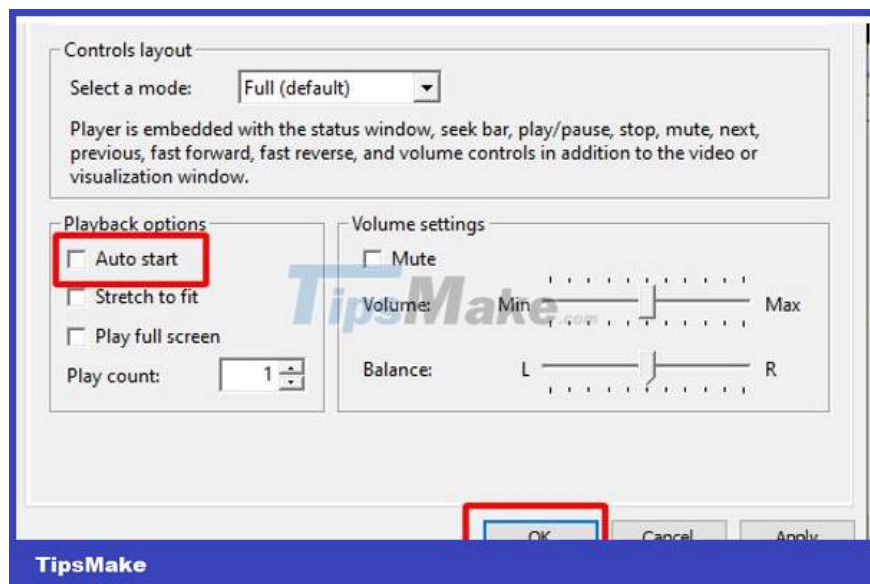


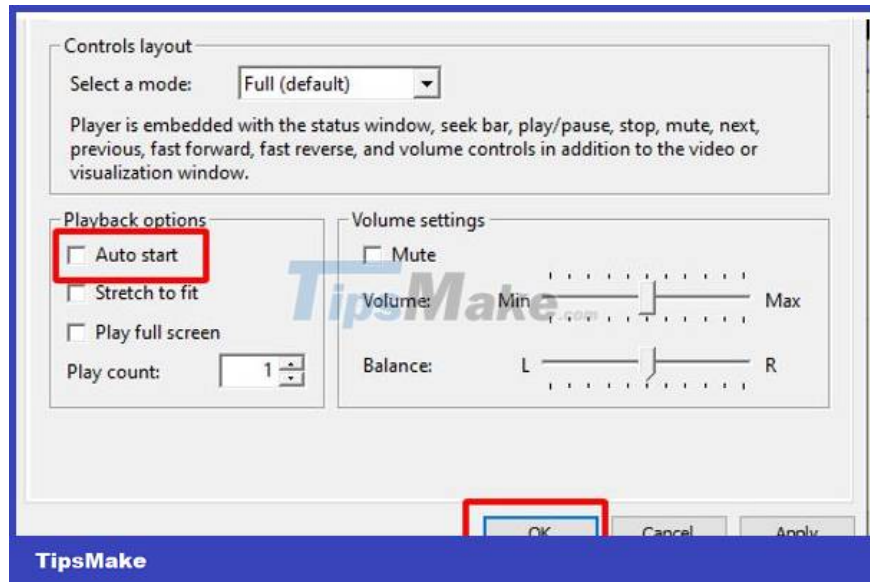
1. Step 8: Once you have set the location, select Properties on the toolbar.
2. Step 9: When the Properties panel appears, select the 3-dot icon next to the custom section.





1. Step 10: Click on Browse to select the video you want to insert. Then click to select the video and press ok.
2. Step 11: Then in the Playback options section, uncheck Auto start and select ok.





So the process of inserting windows media player into PowerPoint is complete. Now you can click on the slideshow icon to check the results.

TipsMake has helped you find out the cause and how to fix it when PowerPoint cannot insert MP4 videos. Through this article, hopefully you can quickly fix errors when using PowerPoint.

You finished reading the article "**PowerPoint cannot insert MP4 videos**" edited by the [TipsMake](#) team. We hope this article has provided you with many useful tech tips and tricks. You can search for similar articles on tips and guides. Thank you for reading and for following us regularly.