

Photoshop CS: Cutting edges and creating frames (Last part)

The end of the lesson cuts out the edges and creates a photo frame. I will introduce a simple way to create a photo frame for any image using layer style effects. I will practice a specific example, you practice following this example, then you will try to create other photo frames just change some specifications on the layer style.

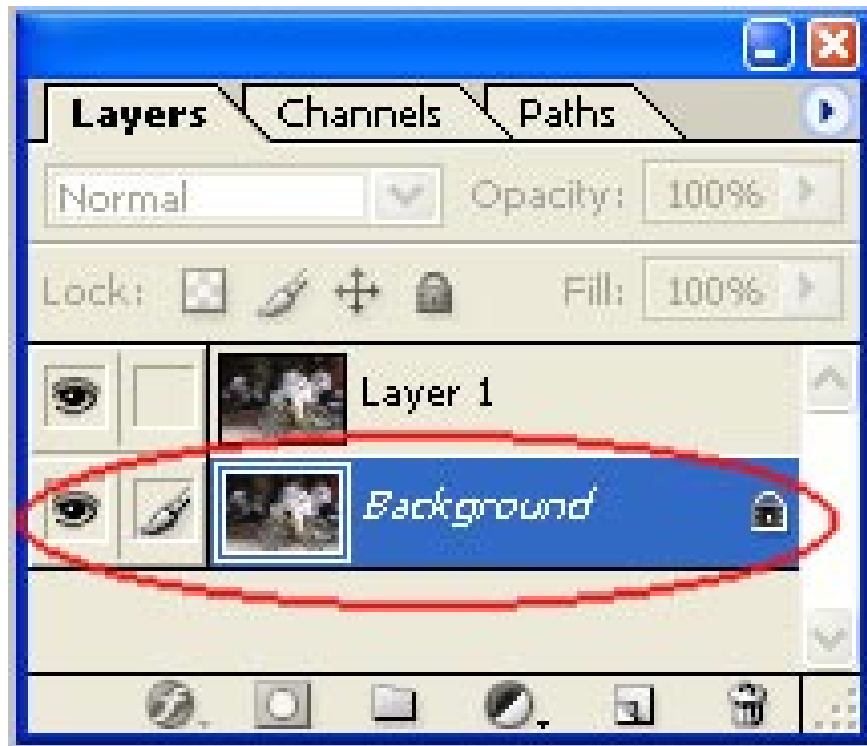
The end of the lesson cuts out the edges and creates a photo frame. I will introduce a simple way to create a photo frame for any image using layer style effects. I will practice a specific example, you practice following this example, then you will try to create other photo frames just change some specifications on the layer style.

II. Frame photos

Open any image file you want to create a frame.

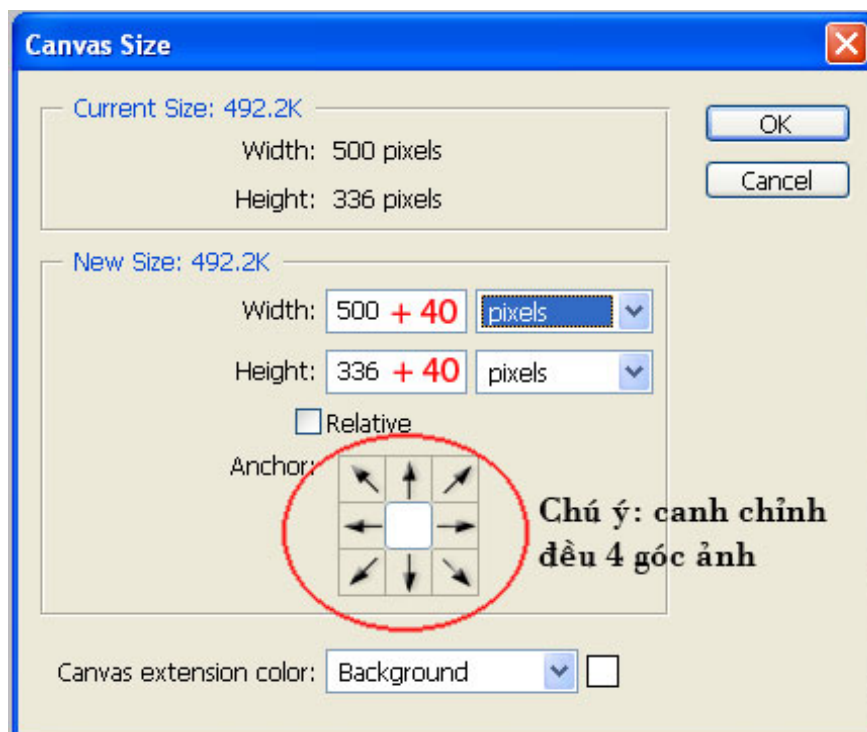


- Press **D** key on keyboard: Default Background before and after Black - White
- Open the layer palette: **Window> layer** (or press **F7**)
- Duplicate this background layer: **Layer> New> Layer via copy (Ctrl + J)** : Name the new layer " **layer 1** "
- Click again to select the background layer



- Then go to **Image > Canvas Size** . Add width and height of about **30 px - 50px** , depending on the size of the image.

In this example, I want the frame to be about 40px wide. So I added **40px** on each side, and you noticed the four corners of the image are aligned.



- After clicking Ok, you will get a border around the image with the background color (white).



- Use **Magic Wand**



and click on the white area around the image. It will create a selection around the white area.

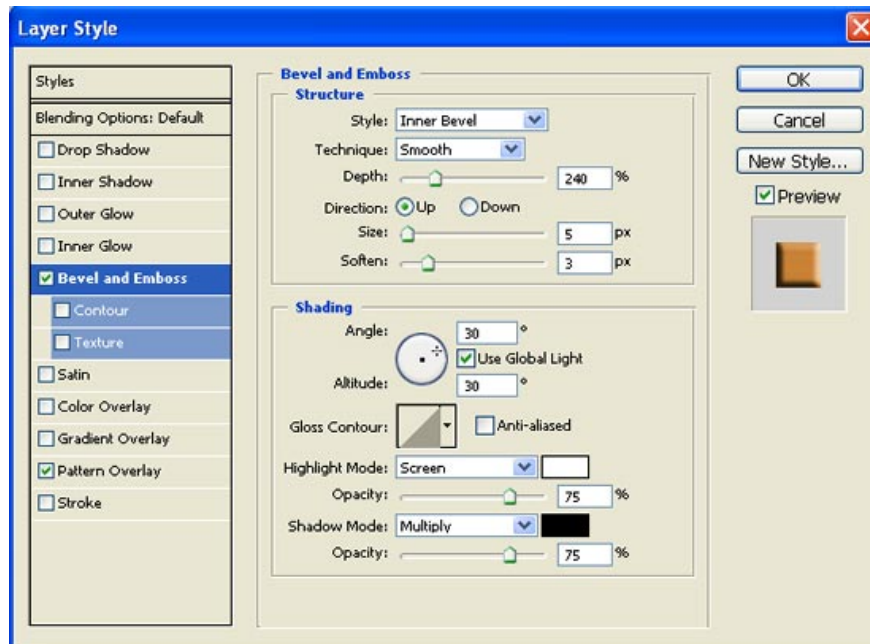


- Copy the selection (**ctrl + J**) : Layer named "**layer 2**"

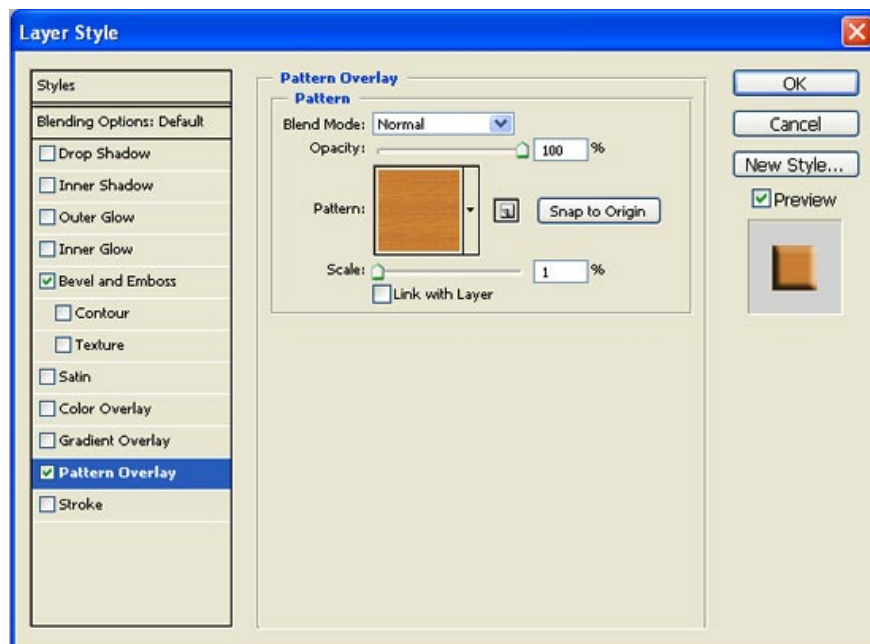
- **Right click on "layer 2" > Blending options**

In the Layer style window select bevel and Emboss and Pattlern overlay with the following parameters

+ **bevel and Emboss**



+ **Pattlern overlay**



Particularly Pattlern overlay: you can choose wood (like my photo frame) or any bubbles, wrinkles that you like. Dragging the % **Scale** slider will also make changes to the pattern frame.

- Return to your photo layer (**Layer 1**): **Right-click "layer 1"> Blending options**

In the **layer style** window **select Inner Shadow** > keep the default or resize the size to 1-5 px

And finally you will have an art framed photo



I wish you all success in this exercise.

You finished reading the article "**Photoshop CS: Cutting edges and creating frames (Last part)**" edited by the [TipsMake](#) team. We hope this article has provided you with many useful tech tips and tricks. You can search for similar articles on tips and guides. Thank you for reading and for following us regularly.