

# PhotoShop - Create embossed photos

You own some beautiful portrait photos or flower pictures and want to create embossed photo frames from those photos. Some of the following simple steps will help you make it

**You own some beautiful portrait photos or flower pictures and want to create embossed photo frames from those photos. Some of the following simple steps will help you easily do that with PhotoShop .**

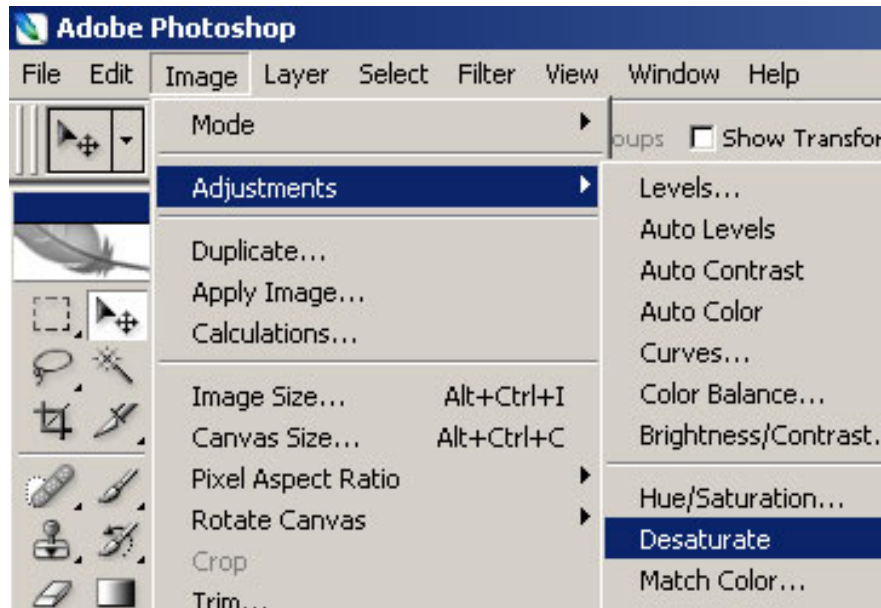
## Step 1 :

Select the photo you want to touch, if you don't already have a photo on your phone, you can get the following photo:



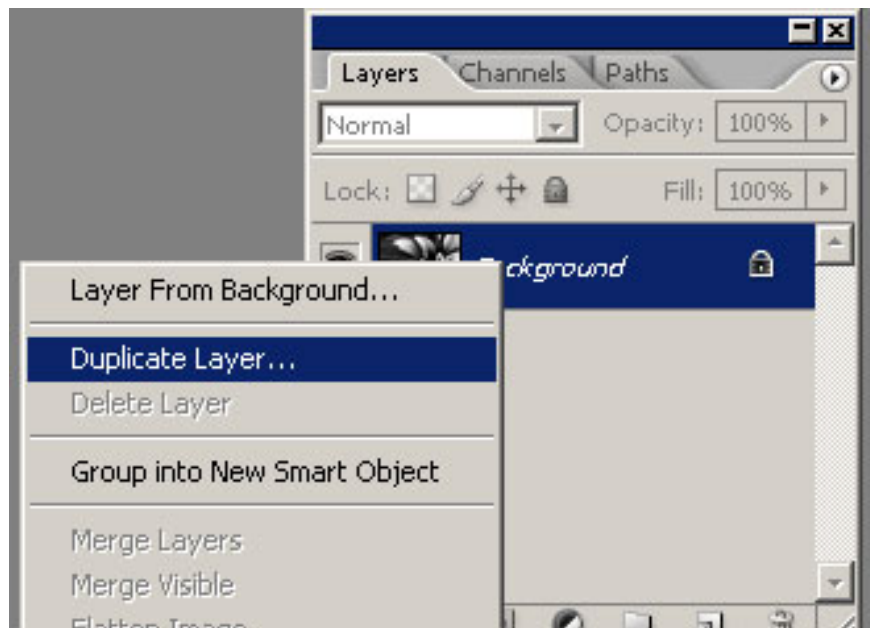
## Step 2 :

Go to **Image > Adjustments > Desaturate** to convert the image to black and white



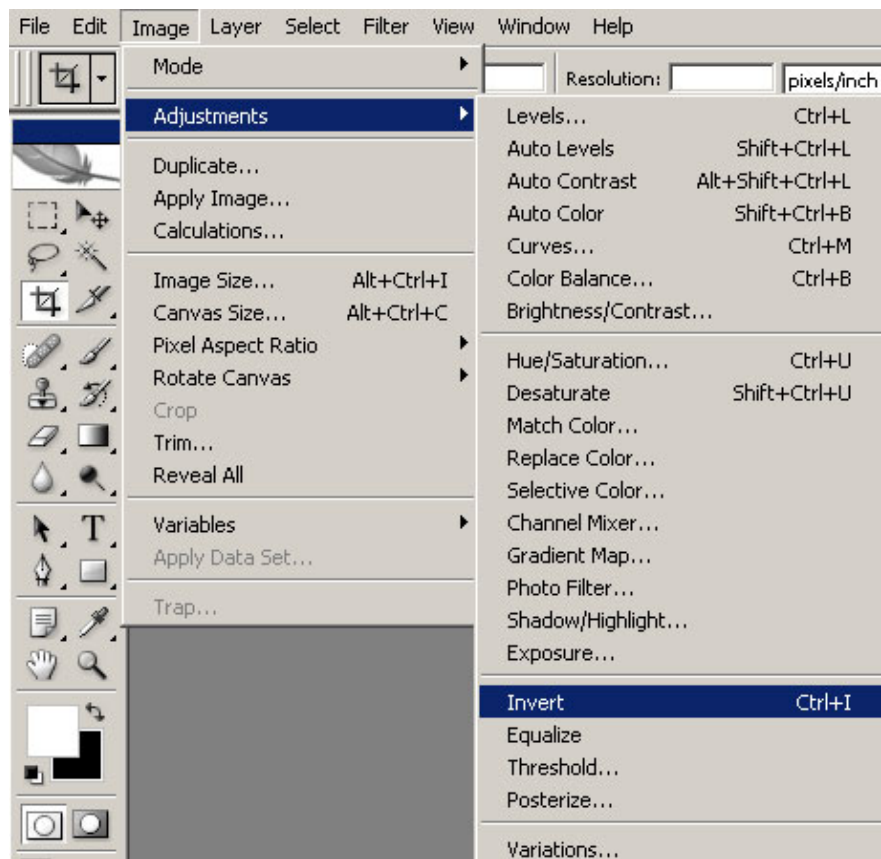
### Step 3 :

In the Layer panel, right-click on the image layer and select **Duplicate layer** (duplicate the current layer). Rename the new layer according to the name you want.



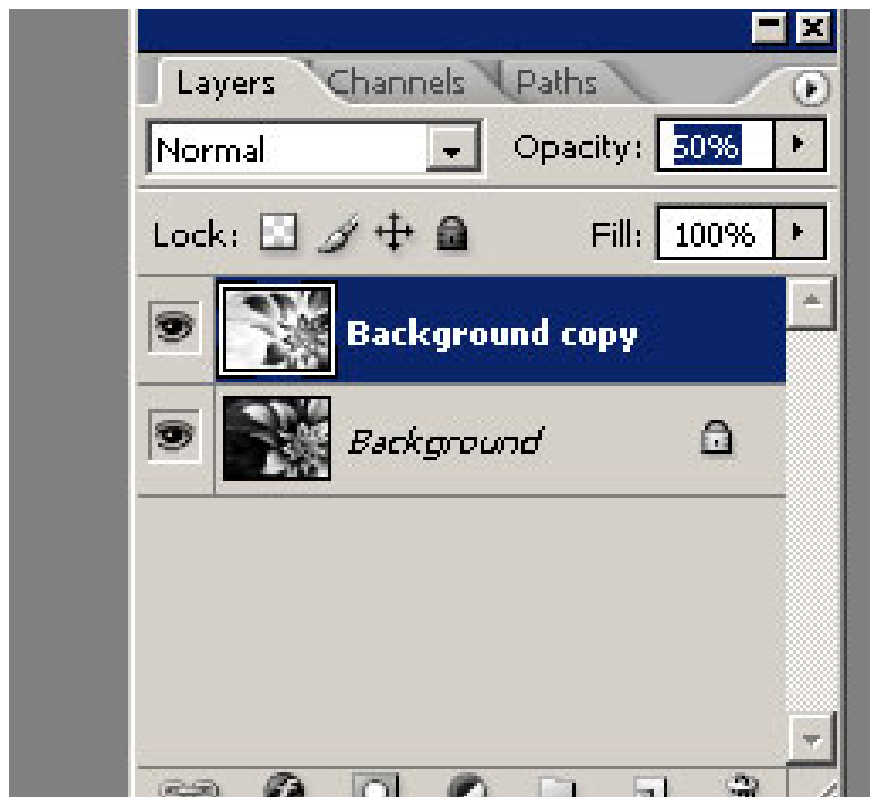
### Step 4 :

Go to **Image > Adjustments > Invert** , you will have an image like an x-ray image.



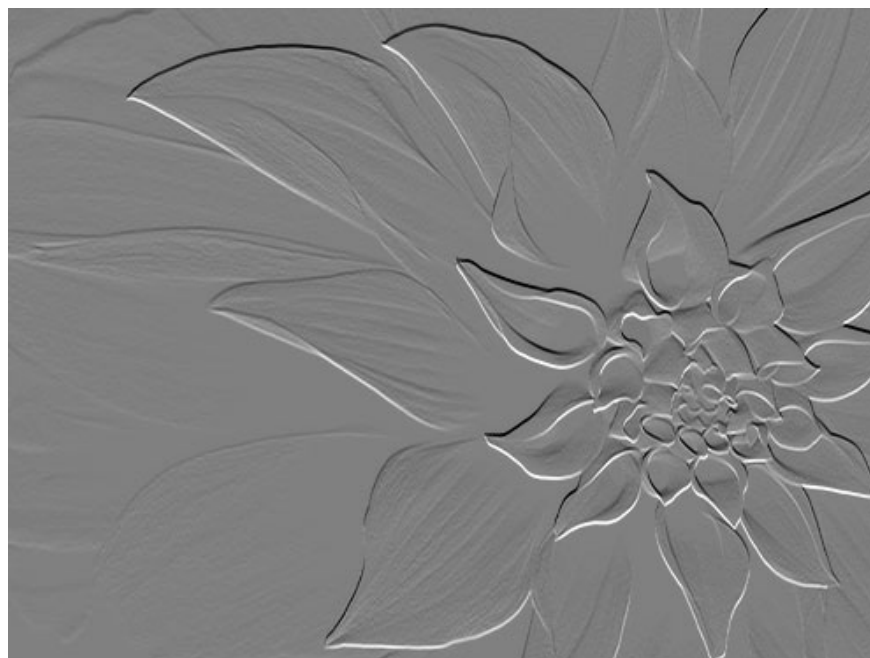
**Step 5 :**

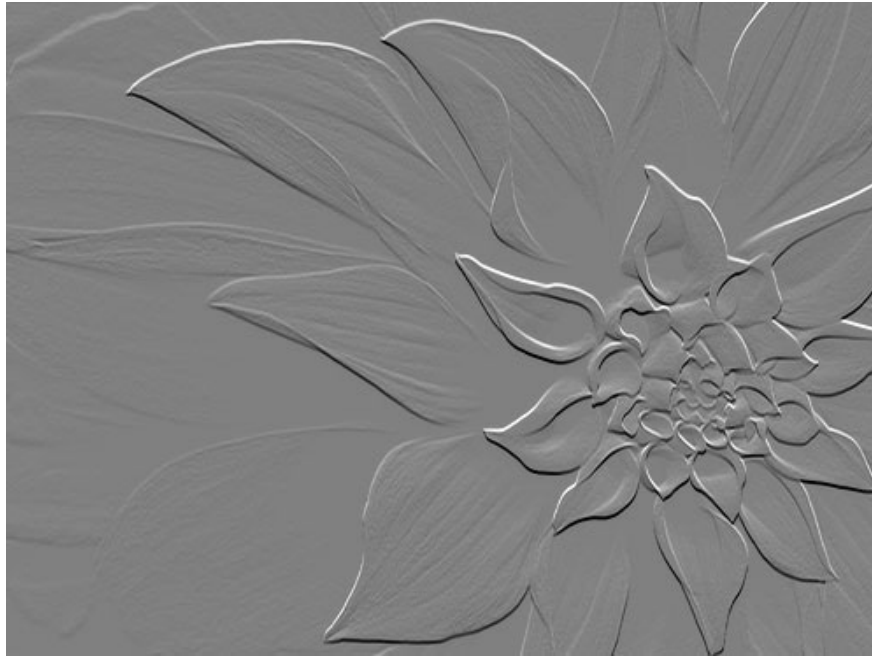
In the Layer panel, set the **Opacity** of the new layer to **50%** (the x-ray image layer), you will see your image turn into a gray background.



**Step 6 :**

Click the **Move to** tool (**V**) and use the arrow keys to move the upper layer image. If you move the image up, your photo will be a touch, move the image down, the image will be embossed.





You finished reading the article "**PhotoShop - Create embossed photos**" edited by the [TipsMake](#) team. We hope this article has provided you with many useful tech tips and tricks. You can search for similar articles on tips and guides. Thank you for reading and for following us regularly.

---