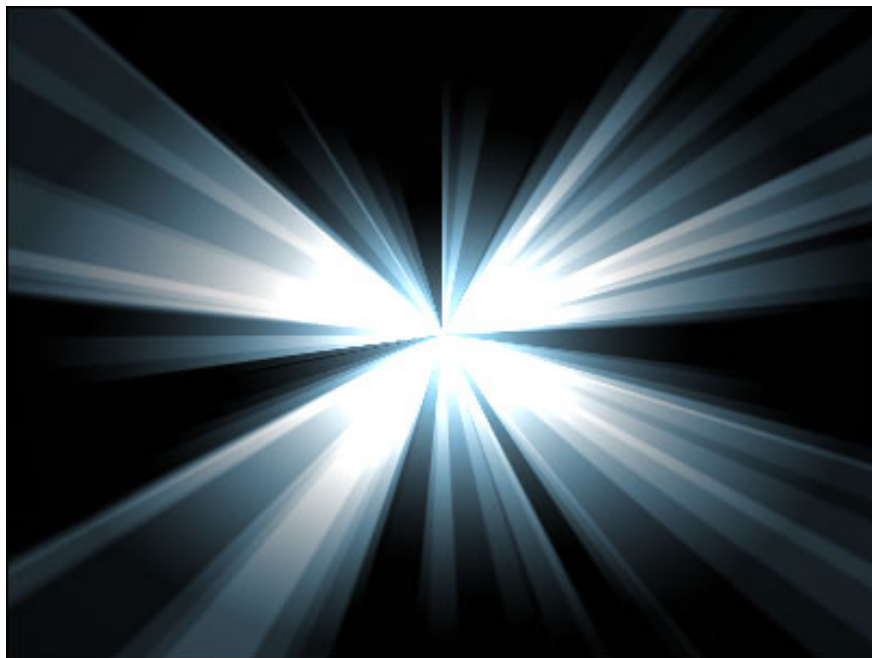


PhotoShop - Create a beam effect

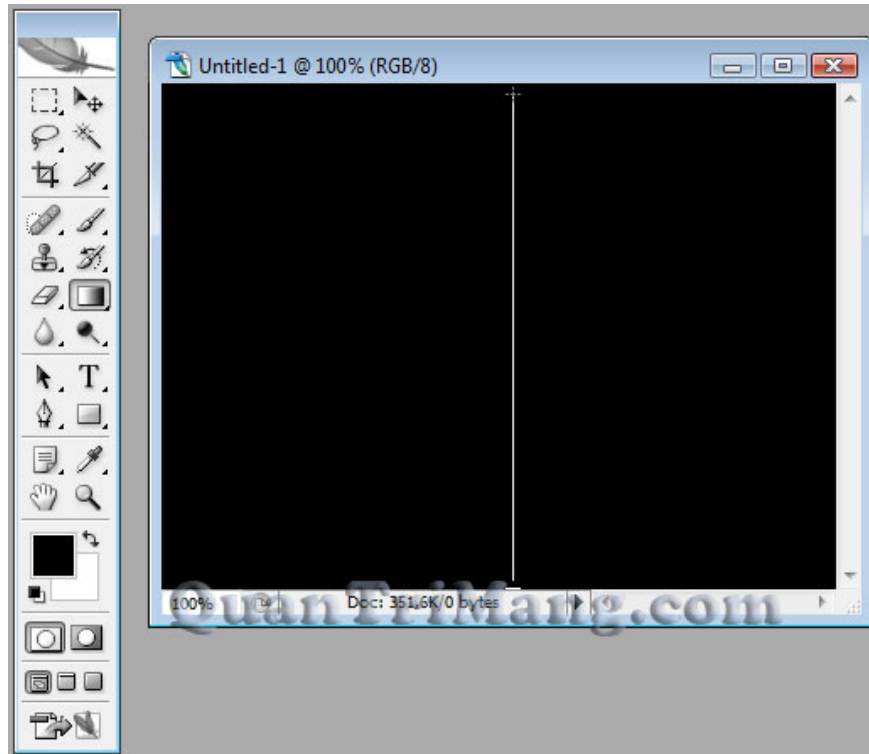
Following the simple steps guided in this lesson, you will create your own customized beam of light with Photoshop tools.

Following the simple steps guided in this lesson, you will create your own customized beam of light with Photoshop tools.



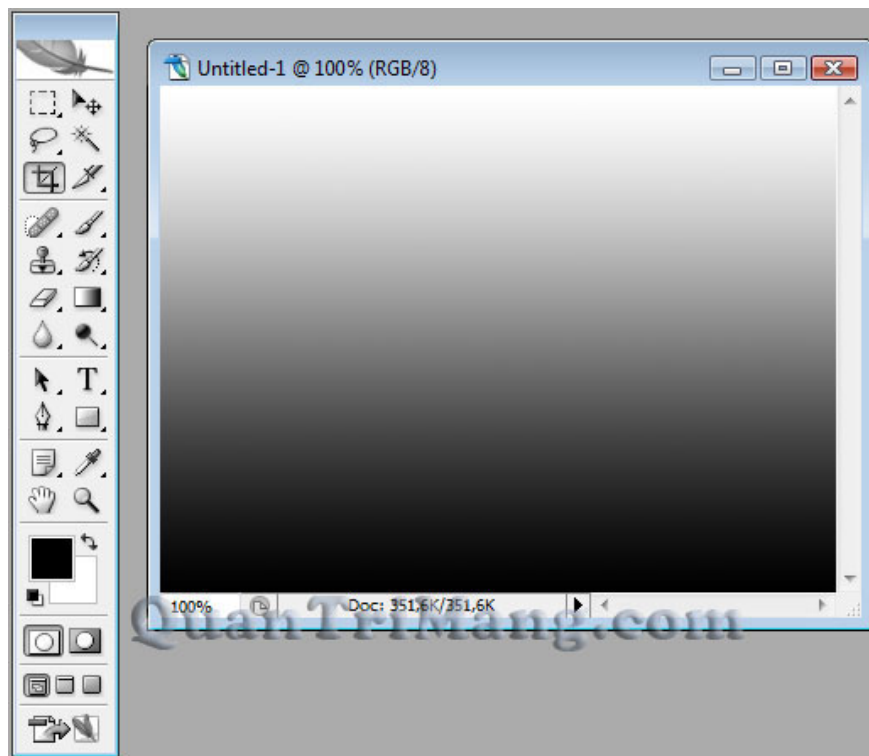
Step 1

Open a new Photoshop file with arbitrary size. Press **D** to set the default foreground and background colors. Press **Alt + Backspace** to fill the file with the background color black. Duplicate the current layer into a new layer (right-click on the current layer name in the right layer and select **Duplicate layer**). Continue working on the new layer.



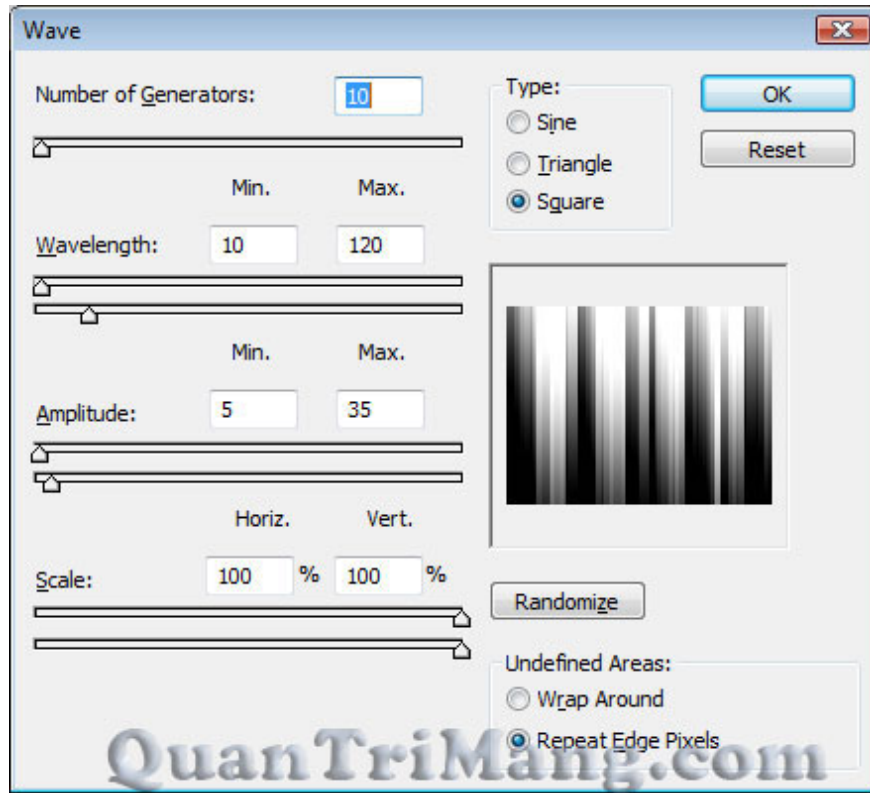
Step 2

Select the **Gradient tool** from the toolbar, move the cursor down to the bottom edge of the file, hold down the mouse button and drag straight to the top edge of the file. After this operation you will have a file with gradients ranging from white to black



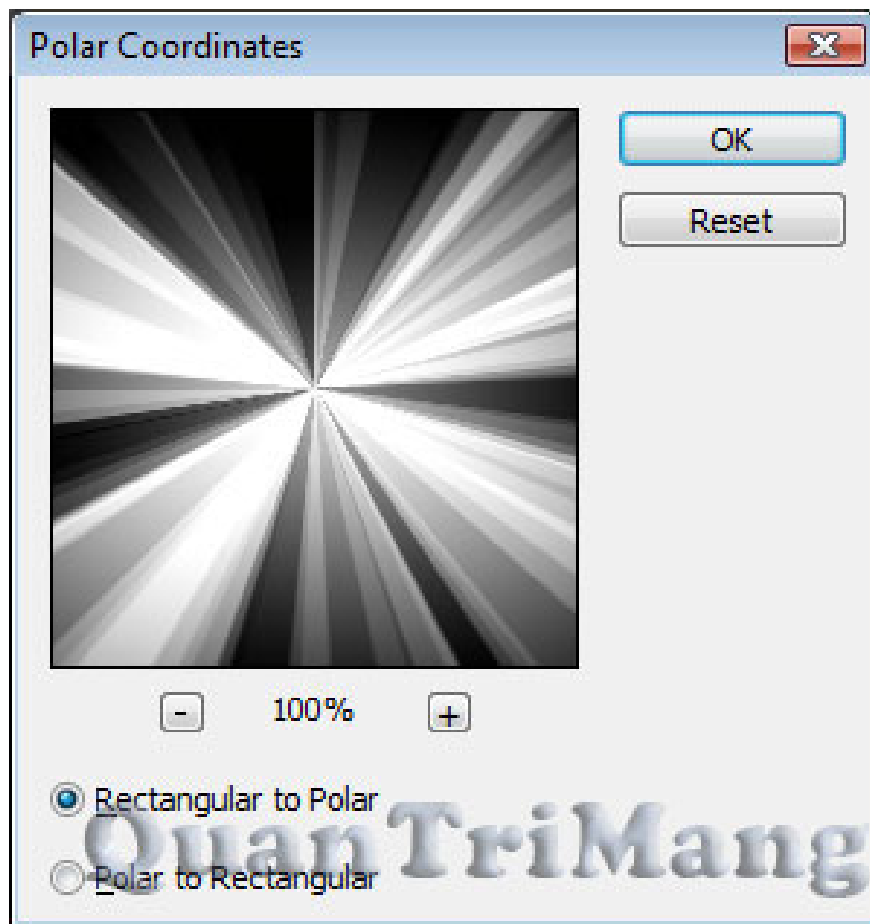
Step 3

Click **Filter > Distort > Wave** , the Wave window appears, set the parameters as shown below



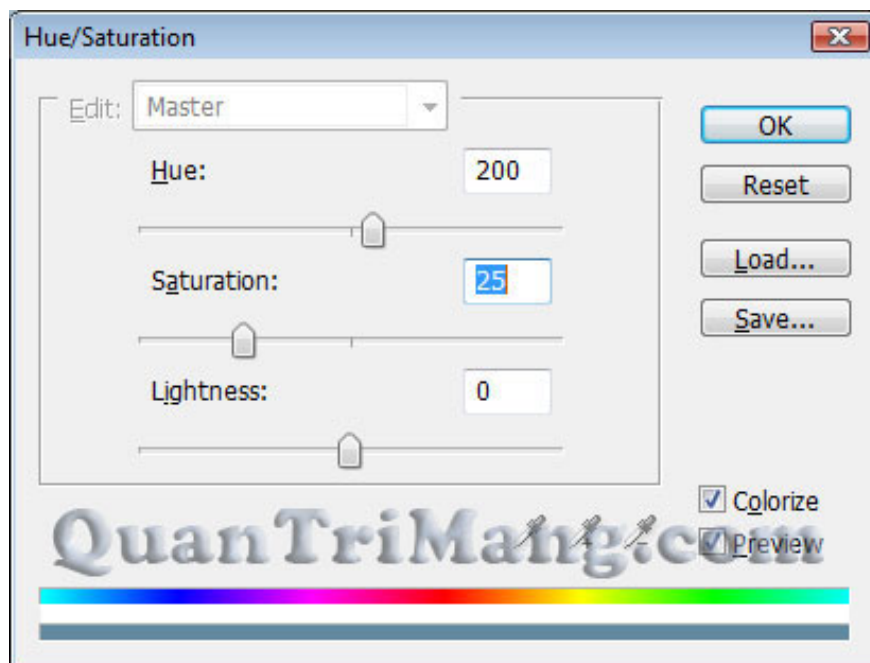
Step 4

Go to **Filter > Distort > Polar Coordinates** . Polar coordinates window opens, set the ratio to **100%** and check the **Rectangular to Polar** option



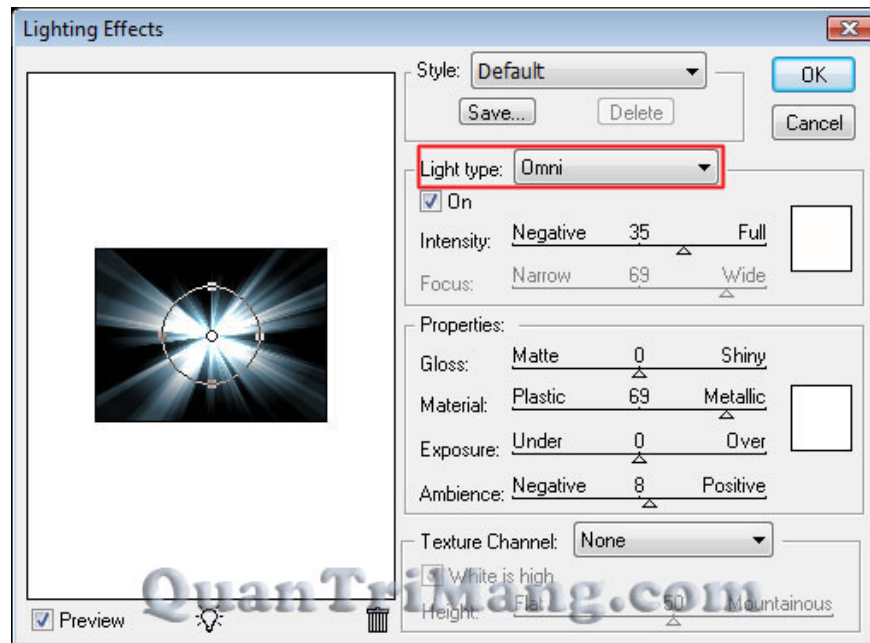
Step 5

Go to **Image > Adjustments > Hue / Saturation** and select the **Colorize** option, then change the following sequence settings: **Hue: 200** , **Saturation: 25** and **Lightness: 0**



Step 6

Next step, go to **Filter > Render > Lighting Effects** and set *Light type* to **Omni**, the remaining settings to default.



You finished reading the article "**PhotoShop - Create a beam effect**" edited by the [TipsMake](#) team. We hope this article has provided you with many useful tech tips and tricks. You can search for similar articles on tips and guides. Thank you for reading and for following us regularly.