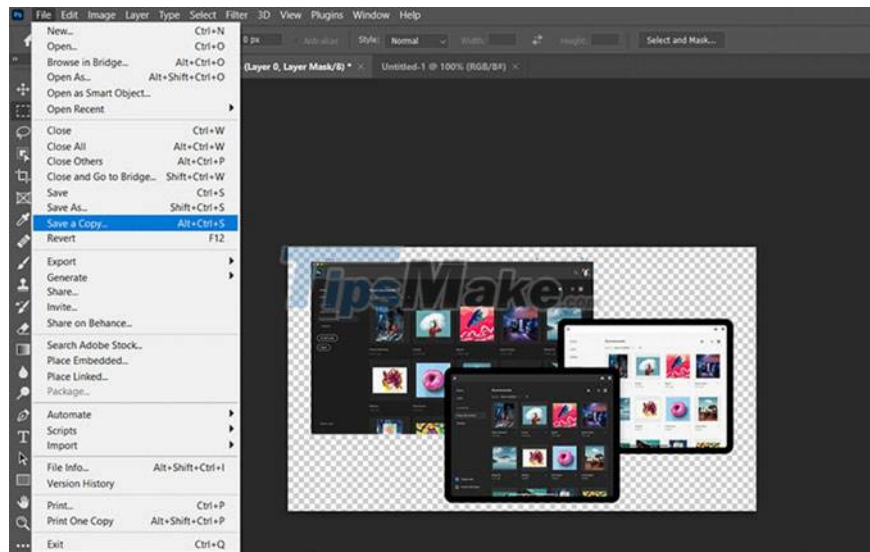


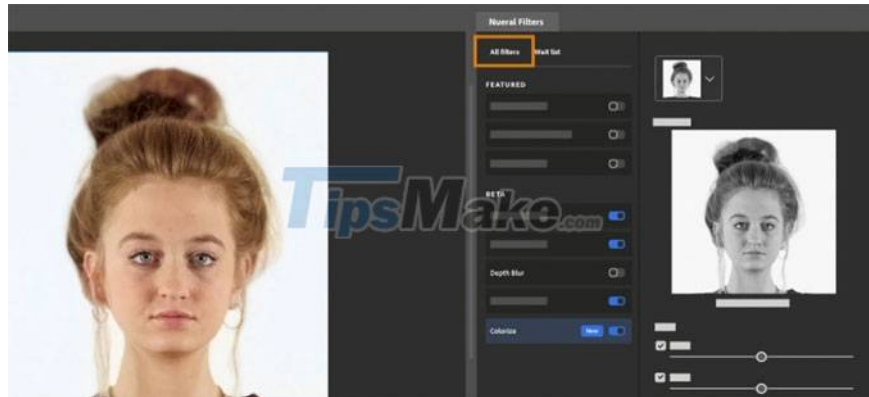
Photoshop 22.4 is available, new features added, improved Neural Filters

Photoshop for desktop - version 22.4 has been released with many notable improvements such as bug fixes, save work and the addition of new Neural Filters.

This Photoshop 22.4 update fixes many minor bugs, improves the Neural engine filter, and adds new features. Adobe will also support Photoshop natively for devices running Windows 10 64-bit v19041.488.0, 8GB of RAM and at least 4GB of VRAM.

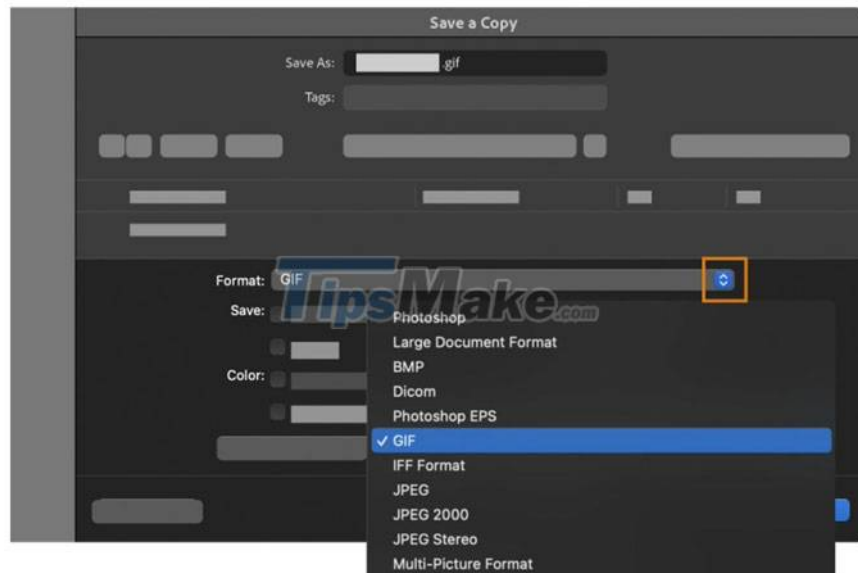


In the latest version of Photoshop, Adobe added a new "Save a copy" feature in the menu that allows users to save copies of their work. When you click on the "Save a copy" option, the application automatically creates a work copy and allows you to export the file and share it in the selected file format. Your data will be safe because this operation does not overwrite the original file.



This Photoshop 22.4 update also adds new Neural Filters by Adobe. All Neural Filters will appear in one place, whether they are complete or in beta that is not quite ready for use.

You can click the link [here](#) to see the full list of Neural Filters.



Currently, users can download the new update Photoshop 22.4 through Creative Cloud. Please download and experience, do not forget to share your feelings by leaving a comment at the end of the article for everyone to know.

You finished reading the article "**Photoshop 22.4 is available, new features added, improved Neural Filters**" edited by the [TipsMake](#) team. We hope this article has provided you with many useful tech tips and tricks. You can search for similar articles on tips and guides. Thank you for reading and for following us regularly.