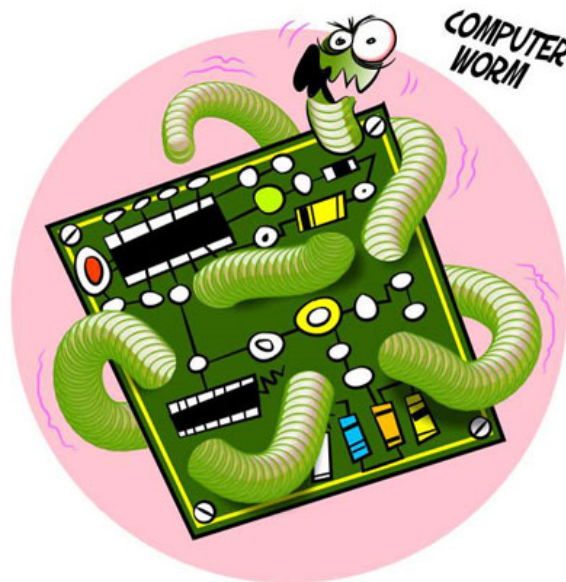


Passwords are simply 'fat bait' of Conficker worm

According to Microsoft's Microsoft SIRv12 Security Report, 92% of computers are infected with Conficker worm because the password is too weak or stolen, and only 8% is due to unpatched vulnerabilities.

According to Microsoft's Microsoft SIRv12 Security Report, 92% of computers are infected with Conficker worm because the password is too weak or stolen, and only 8% is due to unpatched vulnerabilities.



Microsoft emphasized that Conficker worm is becoming one of the major threats to businesses.

In just the past 2.5 years, more than 220 million times have discovered Conficker worm globally and are still spreading due to weak, stolen passwords, or through unpatched vulnerabilities.

Only in the fourth quarter of 2011, this dangerous worm was distributed over 1.7 million global computer systems.

The Conflicker worm is very complex, dangerous, and when infected on the user's computer, it will disable computer security settings, prevent users from updating the patches, and prevent users from accessing the website. Security software manufacturers.

'The crucial issue is that organizations must focus on basic security principles to protect themselves,' said Tim Rains, director of Microsoft computer safety.

Therefore, Microsoft recommends that customers and businesses need to comply with basic security principles so that computer systems are always protected such as using strong passwords (for example, with long, complex

characters) and digging. create employees about this importance; use the most up-to-date version for all system products; use antivirus software from trusted sources, consider cloud computing services of professional providers .

You finished reading the article "**Passwords are simply 'fat bait' of Conficker worm**" edited by the [TipsMake](#) team. We hope this article has provided you with many useful tech tips and tricks. You can search for similar articles on tips and guides. Thank you for reading and for following us regularly.