

Partitioning a hard drive in Windows 8, how to partition a hard drive in Windows 8.

Partitioning your hard drive in Windows 8 is now simpler than ever. You no longer need to use a bootable disk; you can perform the entire process directly within Windows quickly and easily.

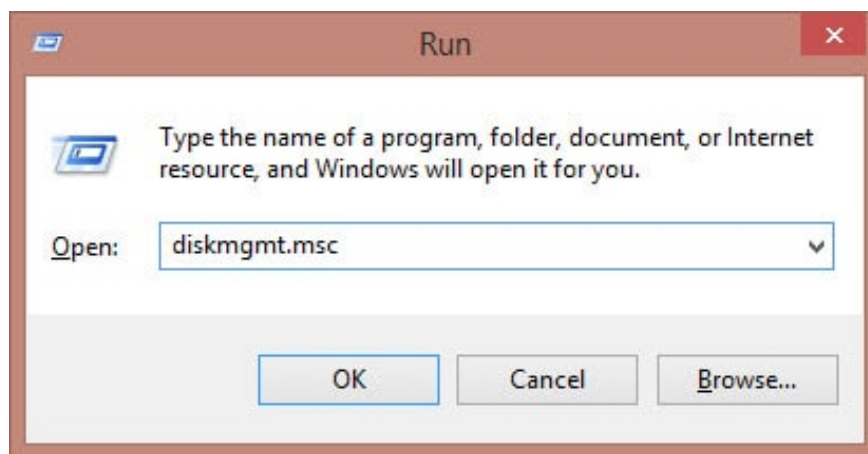
From Windows XP onwards, Microsoft added Disk Management, also known as disk partitioning, to its users. With this feature, you can manage all partitions directly from your computer. For example, you can increase or decrease the number of drives, change drive sizes, rename drives, etc.

Previously, we often used bootable disks to perform this task, but the DOS interface was difficult to use. However, nowadays, you can partition **your hard drive in Windows 7** and Windows 8 directly without using a bootable disk.

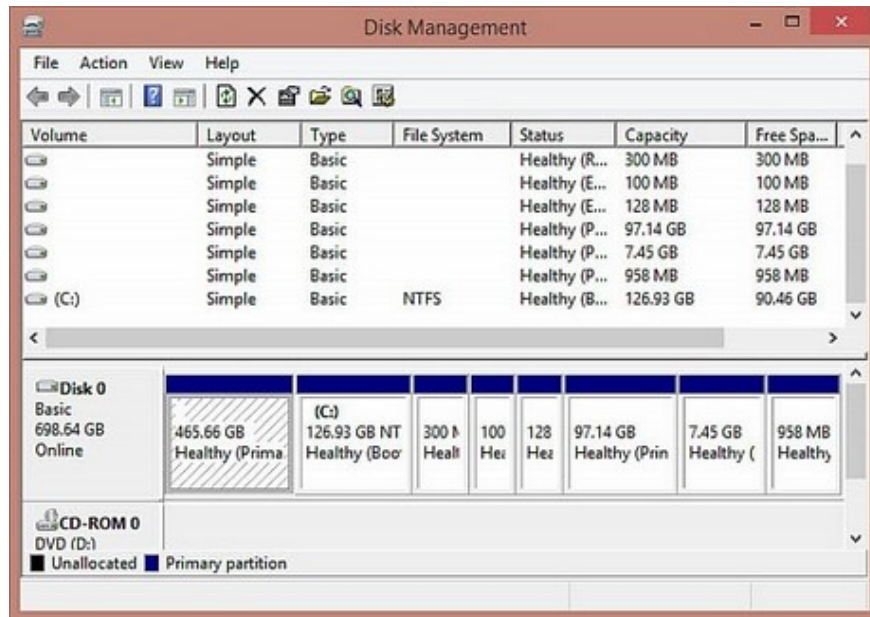
[This guide explains how to partition a hard drive in Windows 8.](#)

Download Windows 8.1 here: **[Download Windows 8.1](#)**

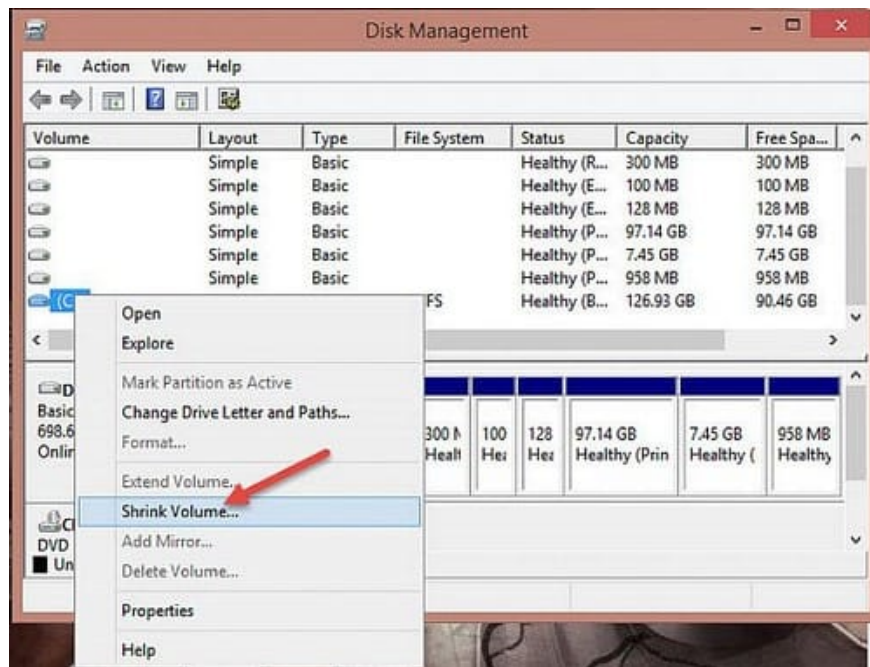
Step 1: First, open the Run window by typing **Windows-R** , then enter **diskmgmt.msc** and press **OK** . Another simple way is to right-click the **Start** button and select **Disk Management** .



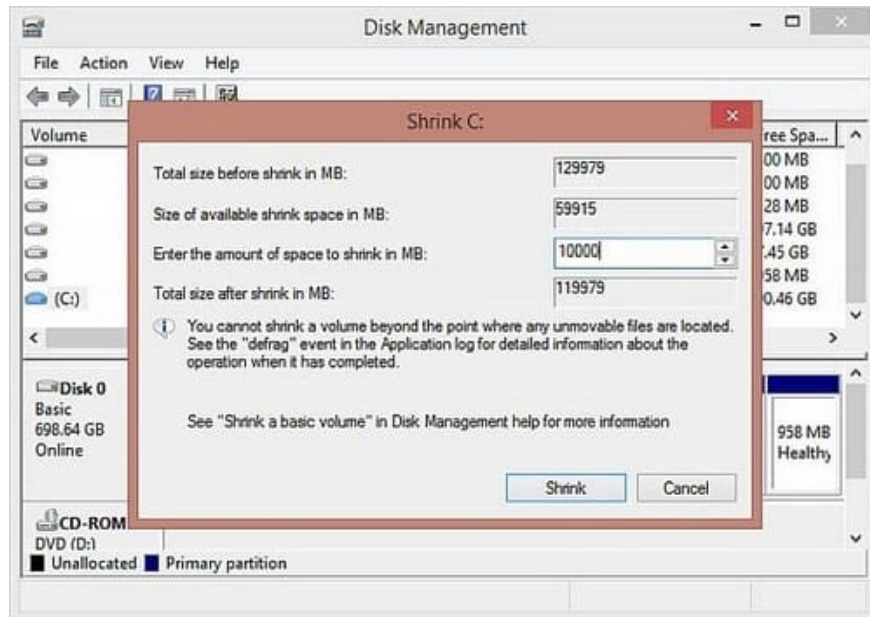
Step 2: After the hard drive partitioning program starts, you will see an interface similar to the following.



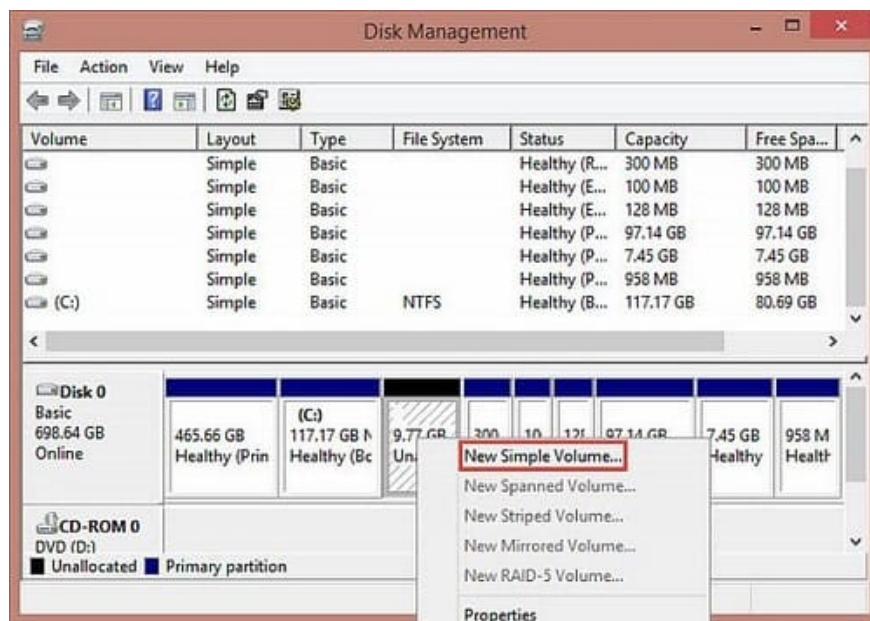
Step 3 : To add a partition from an existing partition, right-click the existing partition and select **Shrink Volume**



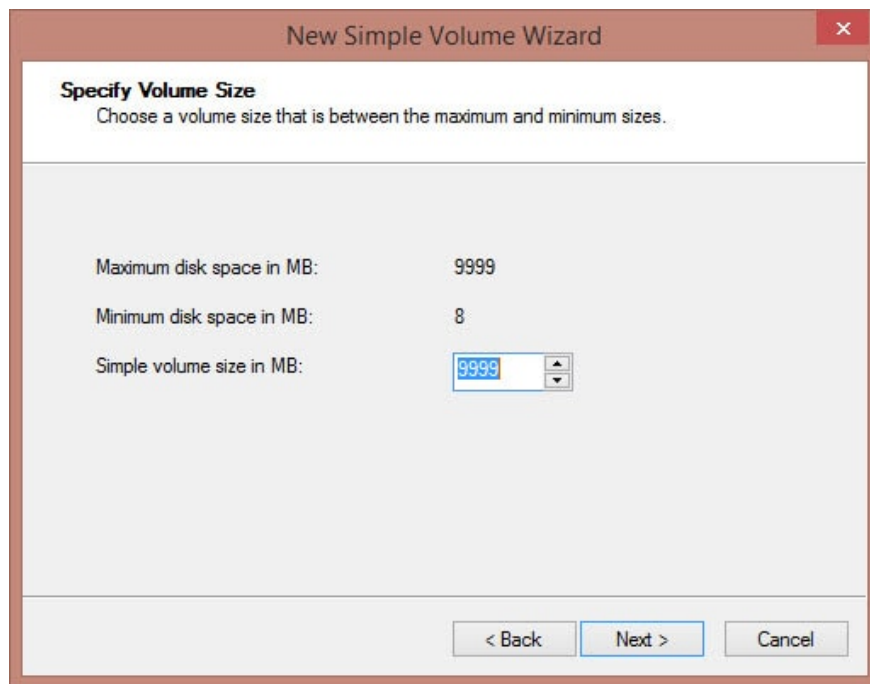
Then enter the size you want the new partition to have. For example, to create a new partition with a size of 10 GB, I would type 10000 (because the unit is MB) and then click **Shrink**.



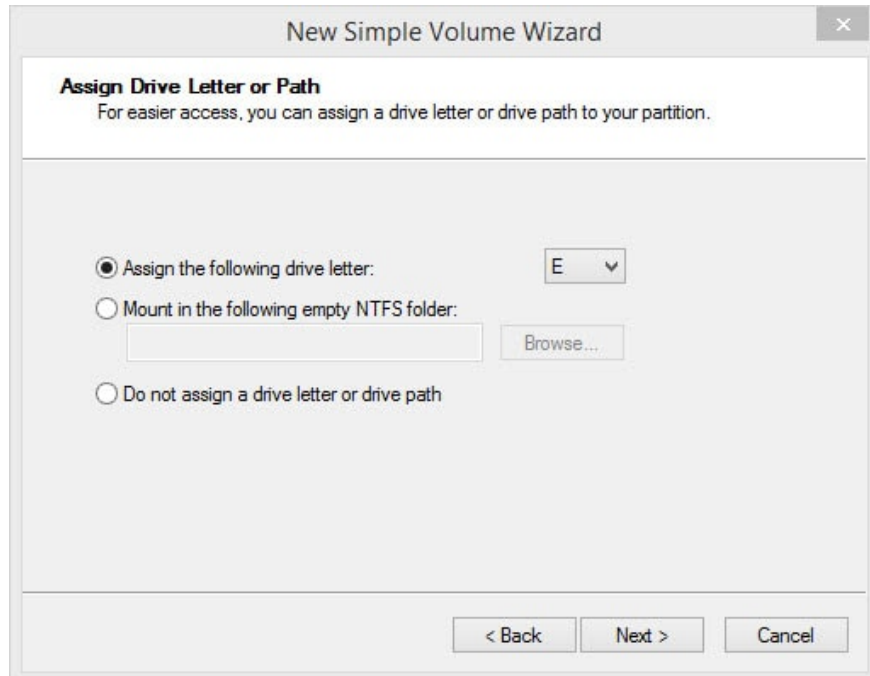
You will see a new partition with a size of 10 GB created. However, this is just an empty partition; you need to specify information for this partition. Right-click on the partition and select **New Simple Volume**.



In the next step, you need to enter the exact desired size.



Next, select **"Assign the following drive letter"** and enter a drive letter for the newly created partition. For example, drive D, E, F, I, etc. Of course, it must not be the same as any previously created partitions.

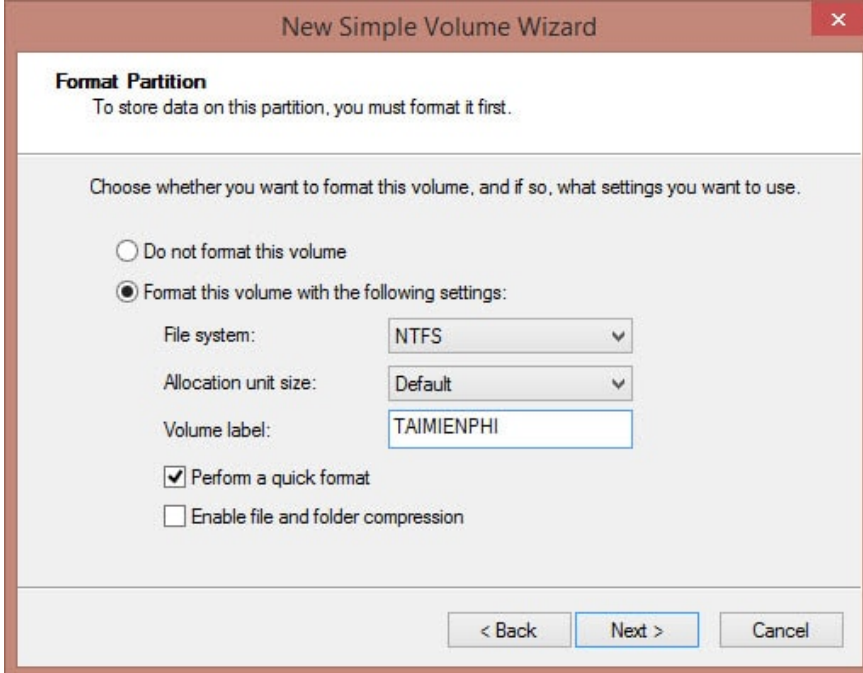


The most important step in the disk partitioning process is choosing the format. Previously, users often chose FAT32, but nowadays NTFS has demonstrated superior advantages, making it the preferred choice for users. Additionally, note the following options:

Volume label : Drive name. For example, TAIMIENPHI.

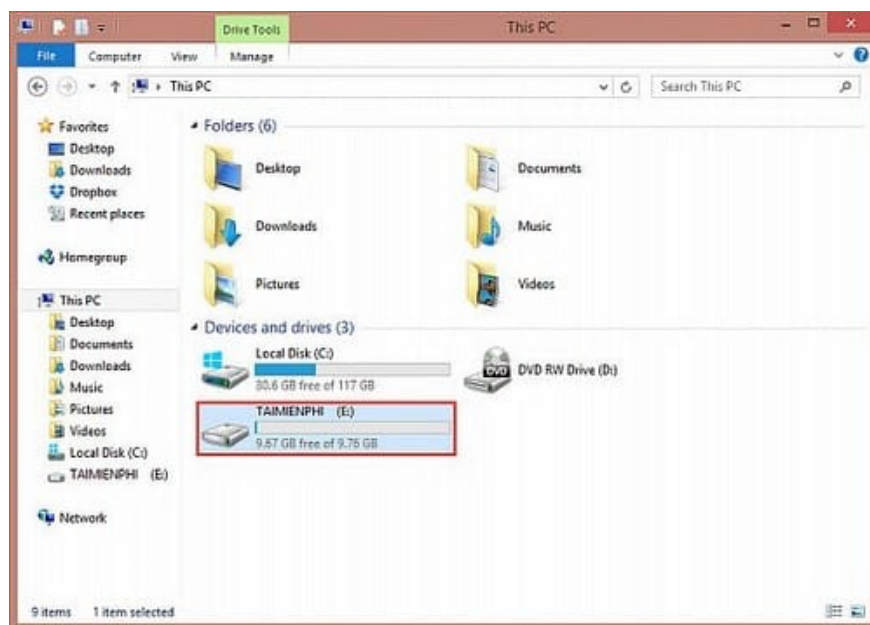
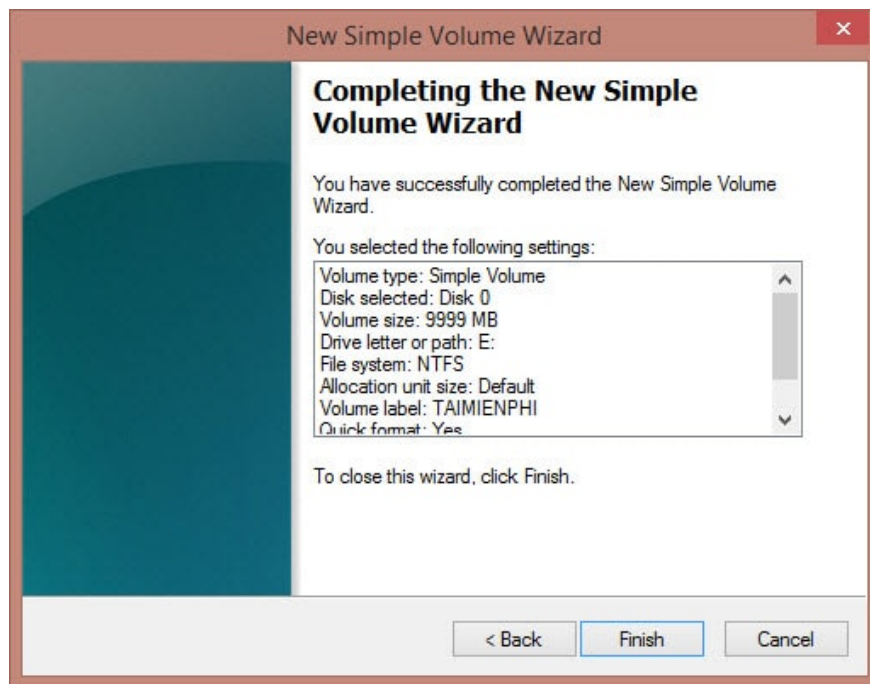
Perform a quick format : Quickly format the drive.

Enable file and folder compression : Compress files and folders. Do not select this if you do not understand this feature.



The image shows a screenshot of the 'New Simple Volume Wizard' dialog box, specifically the 'Format Partition' step. The title bar reads 'New Simple Volume Wizard' with a close button (X) in the top right corner. The main content area is titled 'Format Partition' and contains the following text: 'To store data on this partition, you must format it first.' Below this, it says 'Choose whether you want to format this volume, and if so, what settings you want to use.' There are two radio button options: 'Do not format this volume' (unselected) and 'Format this volume with the following settings:' (selected). Under the selected option, there are three settings: 'File system:' set to 'NTFS', 'Allocation unit size:' set to 'Default', and 'Volume label:' set to 'TAIMIENPHI'. There are also two checkboxes: 'Perform a quick format' (checked) and 'Enable file and folder compression' (unchecked). At the bottom right, there are three buttons: '< Back', 'Next >', and 'Cancel'.

Press **Finish** to complete and see the results.



In summary, TipsMake has introduced you to how to partition a hard drive in Windows 8. The article is illustrated with many images to help you understand the process better. If you want to use third-party software, please refer to re-partitioning your hard drive using Acronis Disk Director .

You finished reading the article "**Partitioning a hard drive in Windows 8, how to partition a hard drive in Windows 8.**" edited by the [TipsMake](#) team. We hope this article has provided you with many useful tech tips and tricks. You can search for similar articles on tips and guides. Thank you for reading and for following us regularly.

