

Overview of the Forefront TMG 2010 management interface

In this article we will give you an overview of the Forefront TMG 2010 management interface.

In this article we will give you an overview of the Forefront TMG 2010 management interface.

Introduce

The appearance of Microsoft Forefront Threat Management Gateway (TMG) 2010 has brought many interesting things and there are compelling reasons for upgrading from previous Microsoft ISA Server versions. One of them is the new security features included in the product, such as URL filtering, web antivirus, anti-malware, SSL forwarding, completely new intrusion detection and detection system, security capabilities. email protection. Besides, there are countless other things that have been changed to make it easier for the daily management task for TMG. In this article, we will show you some of the new favorite features and some interesting improvements in the TMG management interface.

New components are also improved

Rule Base Search - The new search feature included in the TMG management interface will make managing a large number of rules simpler. If you want to display any rule that is using the DNS protocol, simply enter the term 'DNS' into the search box and click the magnifying glass icon to execute the search.

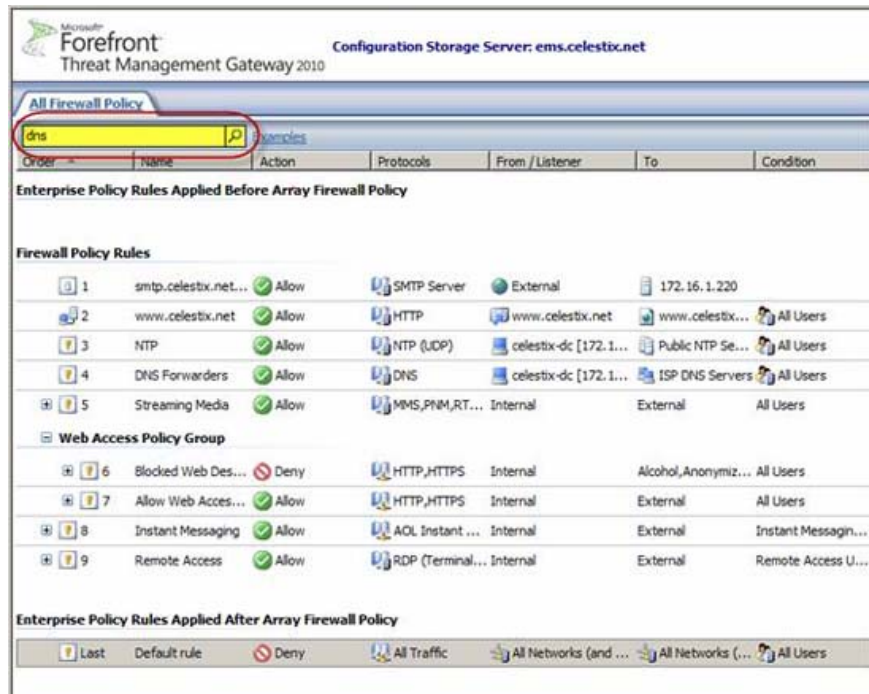


Figure 1

The main window displays rules with the DNS protocol.

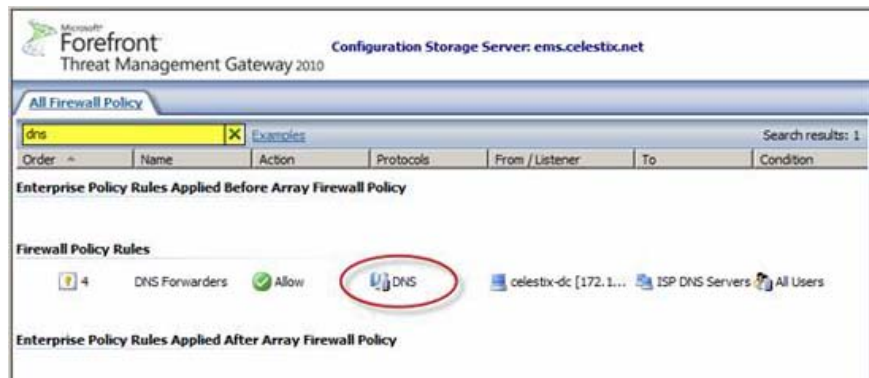


Figure 2

There are several ways to build queries. You can choose the name, *name: value* pairs and *property: value* pairs. For more information, you can click the **Examples** link next to the search box.

Web Access Policy - The new **Web Access Policy** button in the interface tree displays a consolidated view of web access rules configured in TMG.

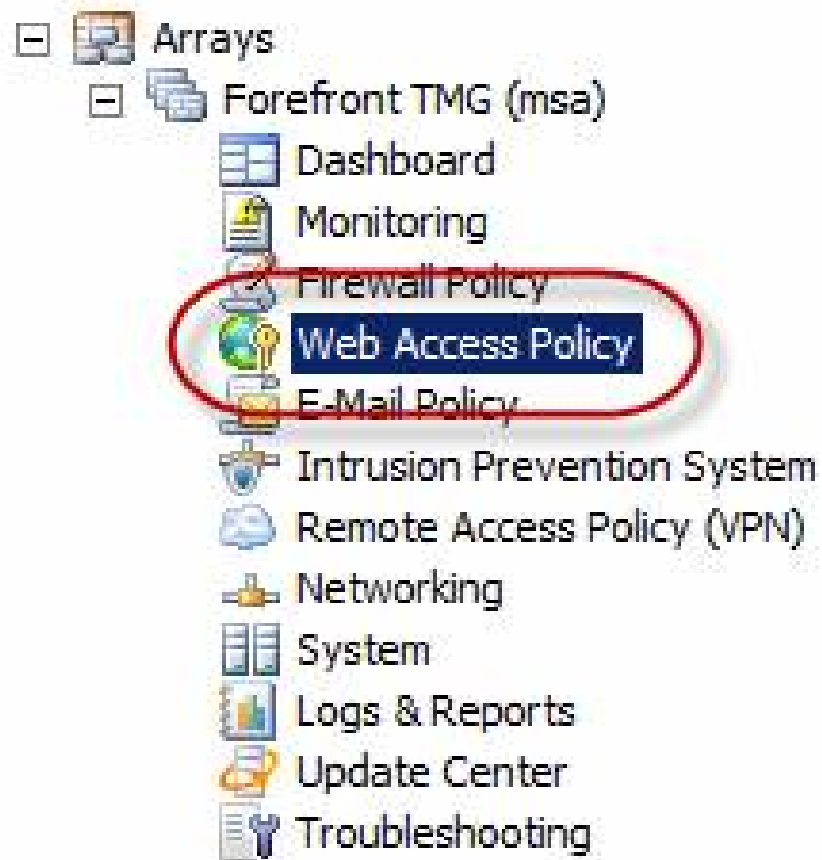


Figure 3

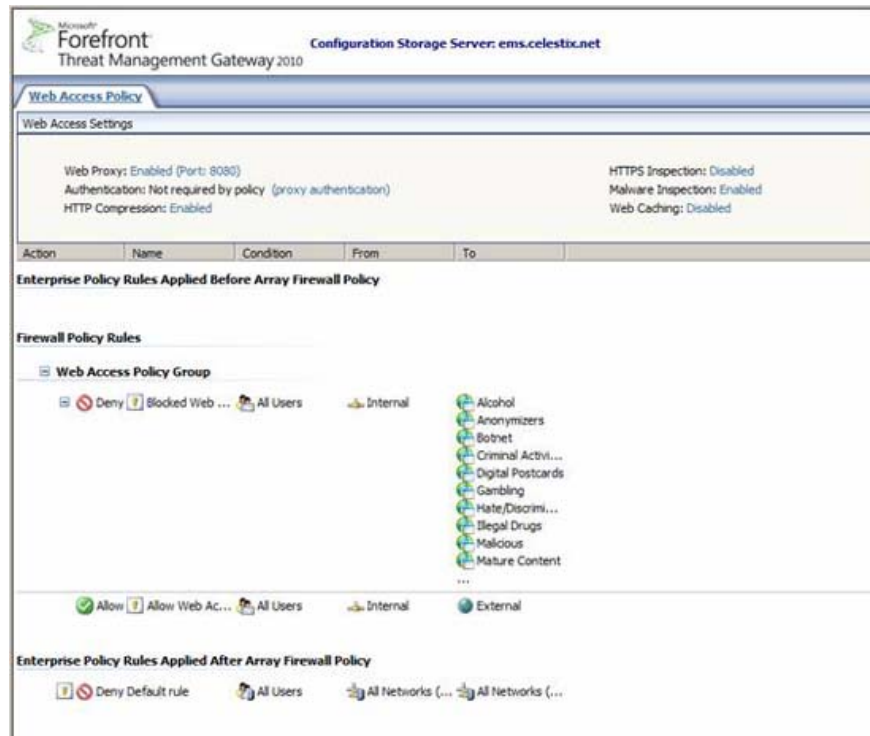


Figure 4

As a rule-based search function, administrators will significantly simplify administrative tasks when executing a large number of complex rules. A clear and concise view of web access rules will reduce configuration errors. Quick and easy access to common settings to allow web access is also included in this view. These settings include web proxy configuration, authentication, compression, HTTPS inspection, malware inspections and web caching.

Routing Configuration - Select the **Networking** button in the interface tree, then you will see a new tab called **Routing** .

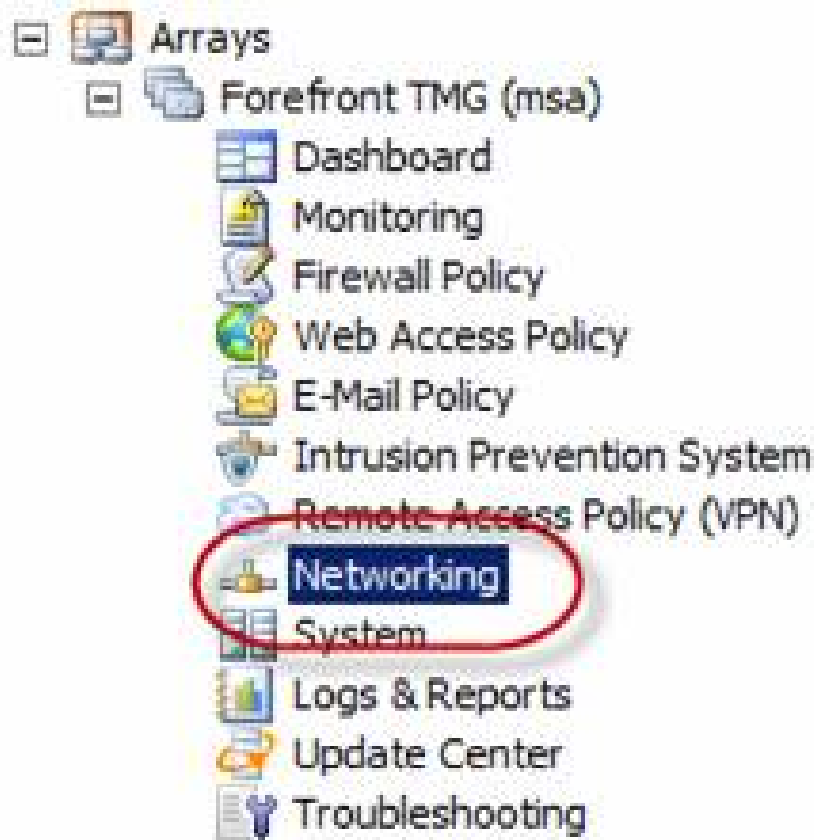


Figure 5

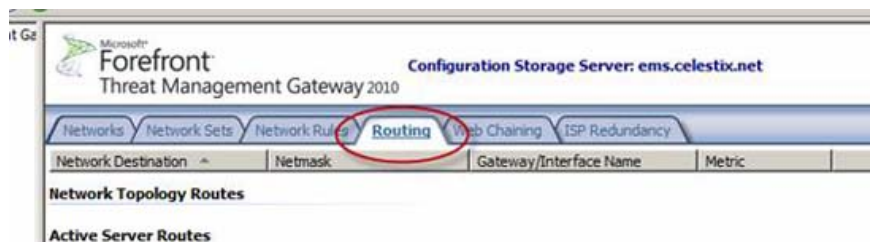


Figure 6

Here you can create **network topology routes** . There is no need to connect to each TMG firewall separately and enter the route command from the command line. To add a static route, click the **Create Network Topology Route link** in the task pane.

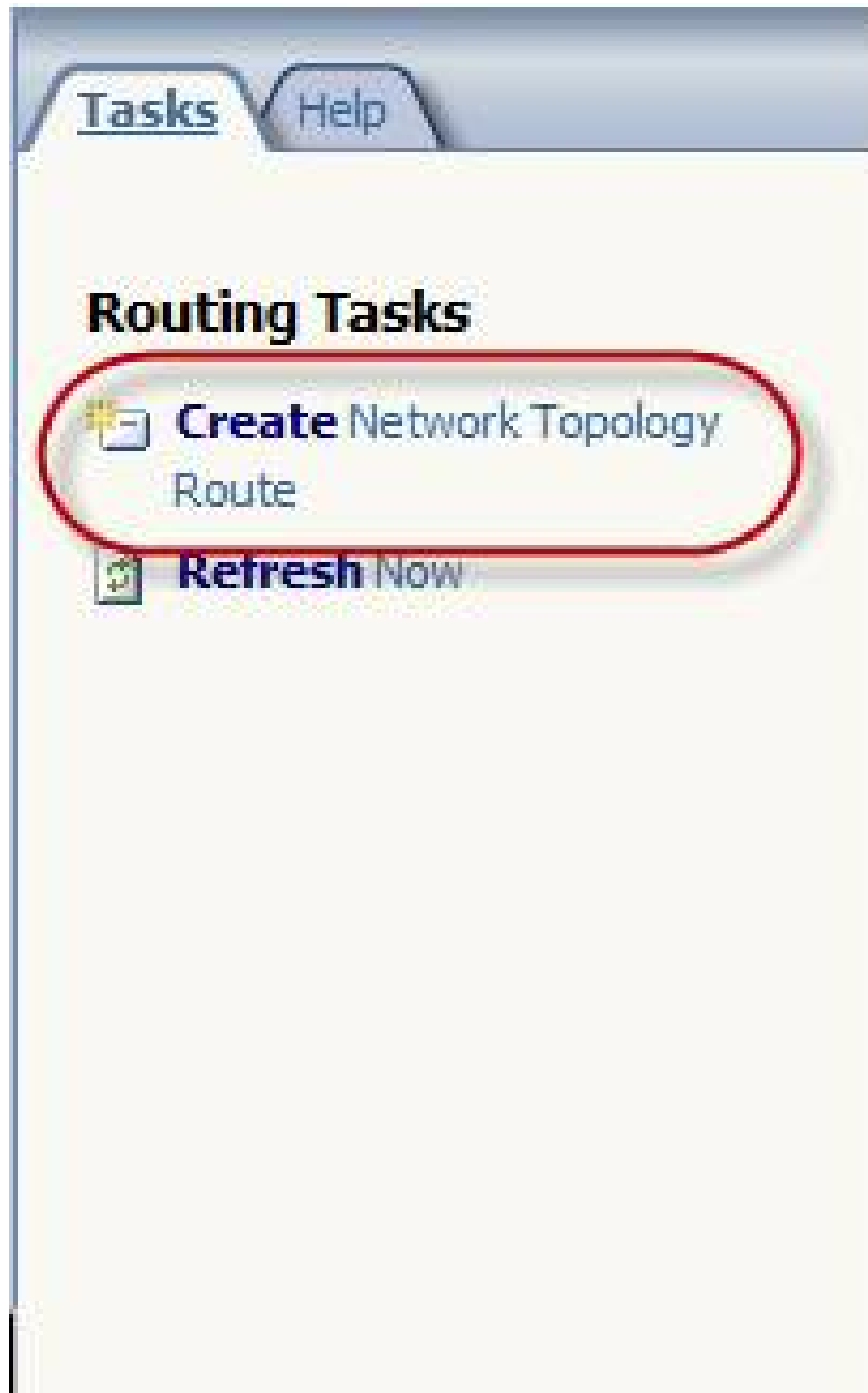


Figure 7

Enter the destination or destination host, the appropriate subnet mask, the gateway address at the next hop. You can also specify a metric if you want.

Network Topology Route [X]

Specify properties of this network topology route:

Network Destination:

Netmask:

Gateway:

Metric (optional):

Figure 8

This feature also allows you to view the routing configuration of each TMG firewall.

Microsoft Forefront Threat Management Gateway 2010 Configuration Storage Server: ems.celestix.net

Networks | Network Sets | Network Rules | **Routing** | Web Chaining | ISP Redundancy

Network Destination	Netmask	Gateway/Interface Name	Metric
Network Topology Routes			
192.168.5.0	255.255.255.0	172.16.1.50	256
Active Server Routes			
msa-01			
0.0.0.0	0.0.0.0	10.0.0.254	0
10.0.0.0	255.255.255.0	External	256
10.0.0.10	255.255.255.255	External	256
10.0.0.255	255.255.255.255	External	256
127.0.0.0	255.0.0.0	Loopback Pseudo-Interface 1	256
127.0.0.1	255.255.255.255	Loopback Pseudo-Interface 1	256
127.255.255.255	255.255.255.255	Loopback Pseudo-Interface 1	256
172.16.1.0	255.255.255.0	Internal	256
172.16.1.254	255.255.255.255	Internal	256
172.16.1.255	255.255.255.255	Internal	256
224.0.0.0	240.0.0.0	External	256
255.255.255.255	255.255.255.255	External	256
msa-02			
0.0.0.0	0.0.0.0	10.0.0.254	0
10.0.0.0	255.255.255.0	External	256
10.0.0.12	255.255.255.255	External	256
10.0.0.255	255.255.255.255	External	256
127.0.0.0	255.0.0.0	Loopback Pseudo-Interface 1	256

Figure 9

Network Interface Configuration - In addition to being able to configure static routes in the management interface, you can configure network interface properties. Click the **Networking** button in the console tree and select the **Network Adapters** tab.

Note: This tab is only available when running the management interface on an array member. It is not displayed in the management interface on the Enterprise Management Server.

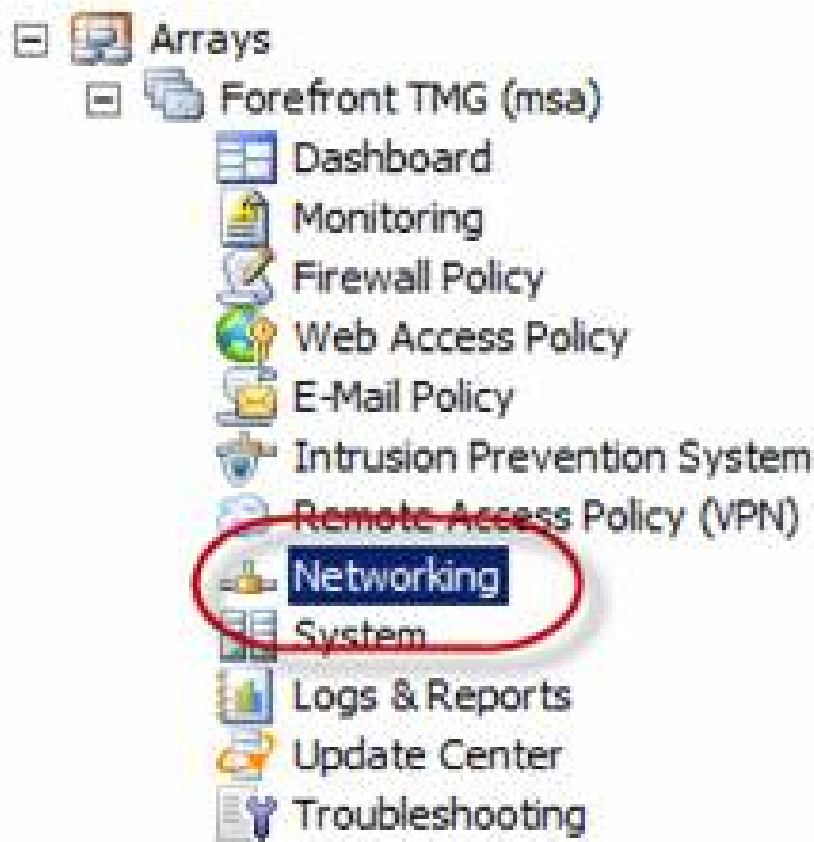


Figure 10

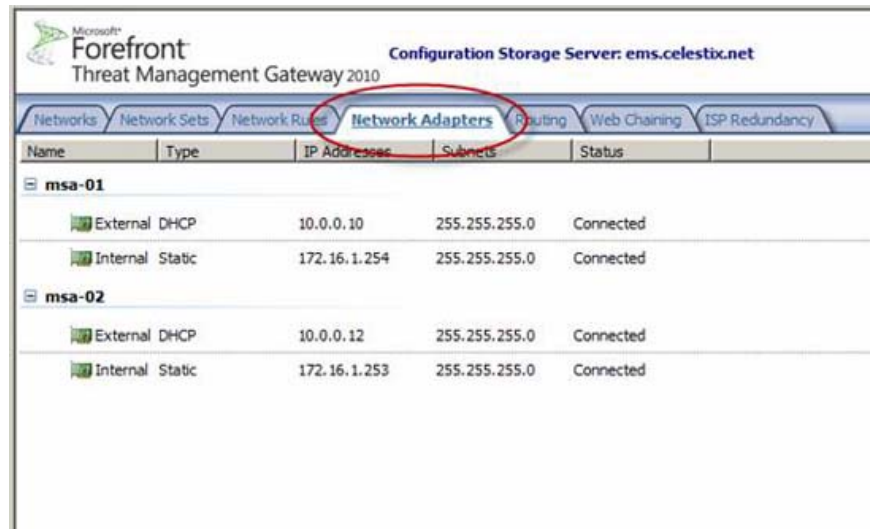


Figure 11

Right-click on a network interface and select **Properties** . Here you can change IP addresses, subnet masks, default gateways, and configure DNS servers. In addition, you can enable or disable interfaces.

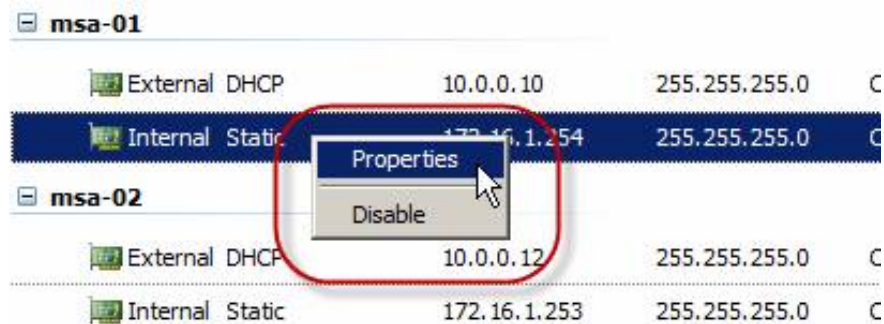


Figure 12

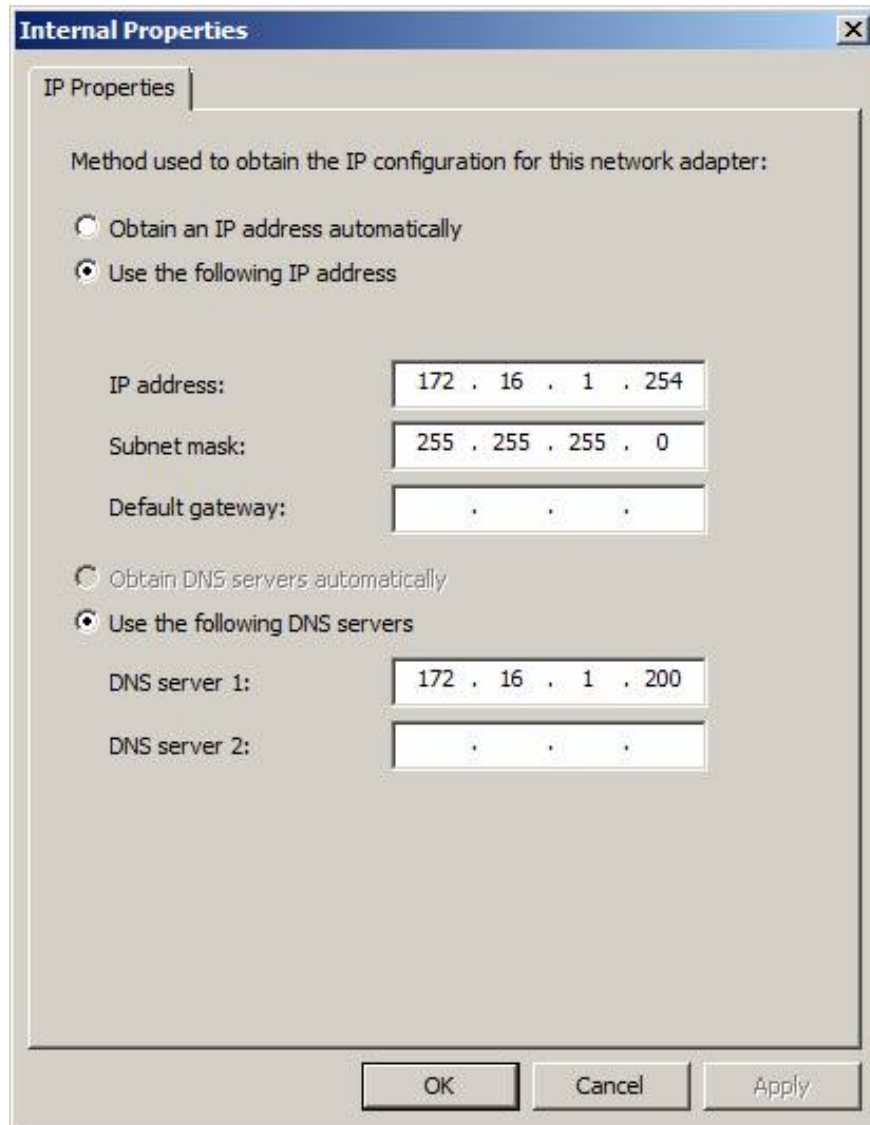


Figure 13

Getting Started Wizard - After TMG is installed, the first time you open the management interface, the program will launch the **Getting Started Wizard** .



Figure 14

Here you will be prompted to configure network and system settings, define deployment options. If you need to make significant configuration changes to the system or redefine deployment options, you can run the wizard again by clicking the top button in the console tree and then selecting the **Tasks** tab in the task pane and Click the **Launch Getting Started Wizard** link.

Tasks

Help

Roles Configuration



Launch Getting Started
Wizard



Join Array



Configure Array Properties



Assign Administrative Roles

Related Tasks



Export (Back Up) Array
Configuration



Import (Restore) Array
Configuration



Participate in Microsoft
Telemetry Reporting

Figure 15

Note that you cannot run the Getting Started Wizard when the TMG firewall is a member of the array. Attempting to launch the wizard will generate the following error:



Figure 16

Network Load Balancing (NLB) Configuration - TMG currently has the ability to change the NLB operator in the GUI.

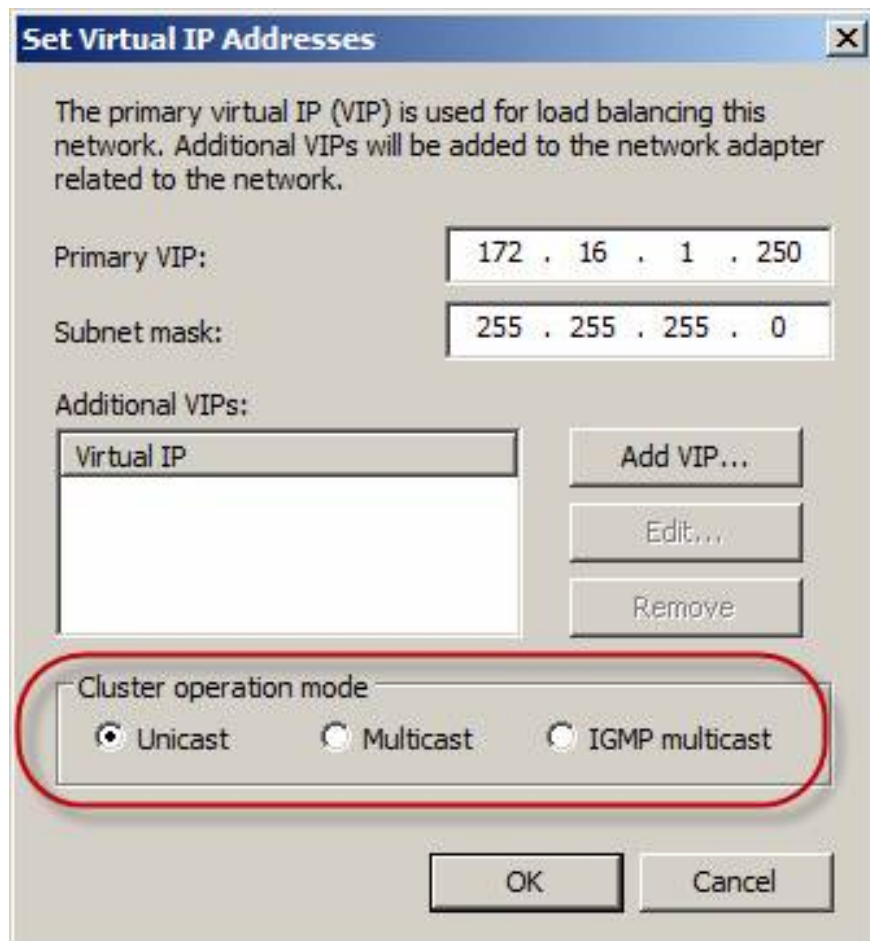


Figure 17

Previously, this change could only be made under the program. This makes it difficult to confirm the settings, requiring the administrator to use the command line tool to perform authentication.

Dashboard System Performance - The system performance indicator in the TMG management interface has new counters. CPU Usage and Available Memory; These two counters are really useful for TMG administrators a lot compared to Allowed Packets / Sec and Dropped Packets / Sec included in previous versions.

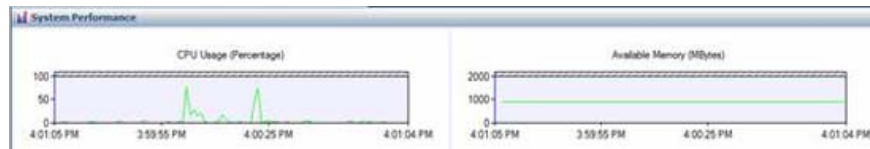


Figure 18

Connectivity Test - Clicking the **Troubleshooting** button in the console tree will display a new tab called **Connectivity Test**.



Figure 19

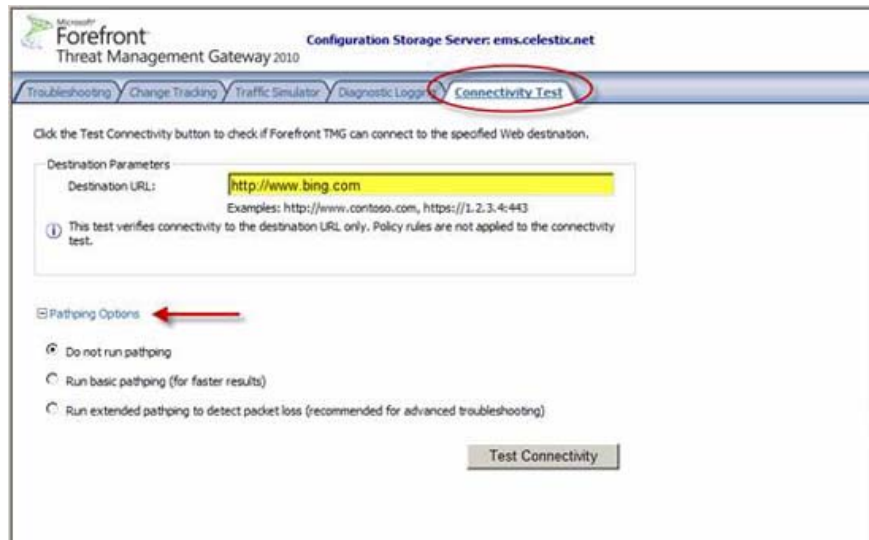


Figure 20

This new tool allows you to test basic web connectivity from the firewall in the management interface. Complete the **Destination URL: field** and click the **Test Connectivity** button to perform the test action. Optionally, you can run a *pathping* during the test to collect other information. Be aware that the destination URL does not have a path so if you are still familiar with entering the same URLs, then you will see the following error message:

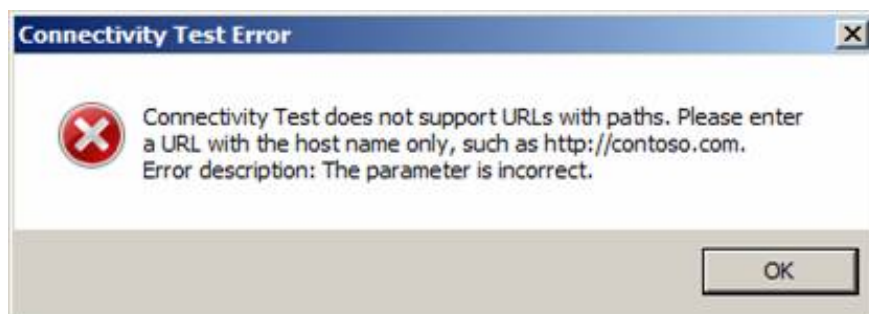


Figure 21

Firewall Policy Grouping - This is another feature that administrators with large volumes of complex rules will appreciate its value. To create a rule group, select one or more rules, right-click the selected rule number, select **Create Group** .



Figure 22

Name the description for the policy group and select **Ok** .



Figure 23

The selected rules will now be part of the group. By right-clicking on the group and selecting **Properties** , you can enable, disable, and move the entire group. You can also rename the group or cancel the group for these rules.

Conclude

These are the new favorite features that I have selected in the Forefront Threat Management Gateway 2010 management interface. There will definitely be many other features that you will find useful, so we recommend you Let's explore more about this new TMG management interface.

You finished reading the article "**Overview of the Forefront TMG 2010 management interface**" edited by the [TipsMake](#) team. We hope this article has provided you with many useful tech tips and tricks. You can search for similar articles on tips and guides. Thank you for reading and for following us regularly.