

Notes when installing air conditioners do not cost electricity

The arrangement for the indoor unit, outdoor unit of the air conditioner will affect the operation capacity of the machine, special cooling ability can prolong the life or not.

When I decided to buy flowers for my family, many people often only pay attention to brands, regulating capacity, prices, but often pay less attention to the installation of the right star. People will often only install so convenient with the location of hot and cold places in the house without calculating whether to put in that position affects the cooling ability of the machine or not. Therefore, many cases of electricity regulation in your home increase rapidly due to improper installation position of air conditioner.

1. Measure room area:

First of all, each family needs to determine the room area to choose an air conditioner with an appropriate capacity. The room of 15 m² corresponds to one HP capacity air conditioner (9,000 BTU), the room of 20 m² should install 1.5 HP (12,000 BTU) and over 30 m², corresponding to 2 HP (18,000 BTU).



Currently, the online trading channel META.vn sells a number of air conditioners from different manufacturers in the market. You can refer to the link below for more details:

2. Locate the installation of indoor unit:

The indoor unit is the part that is installed inside the room, doing the air conditioning task. This part should be installed near the family's usual place of living, placed on high but not too close to the ceiling. The arrangement of equipment in areas, corridors or near places where heat is released and absorbed, causes waste of electricity.

Therefore, avoid installing in places where direct sunlight shines on or where a high temperature difference such as a main door or window. If installed in these locations, the cold air flow with hot air will condense, causing the air conditioner to sweat and drip.



3. Determine the location of the outdoor unit installation:

The outdoor unit is installed outside the room, making the heat sink. Your family should place this part in the corner position, instead of making a loud noise in the middle of the wall. Avoid installing the outdoor unit where there is direct sunlight, or where strong winds blow and lots of garbage dust.

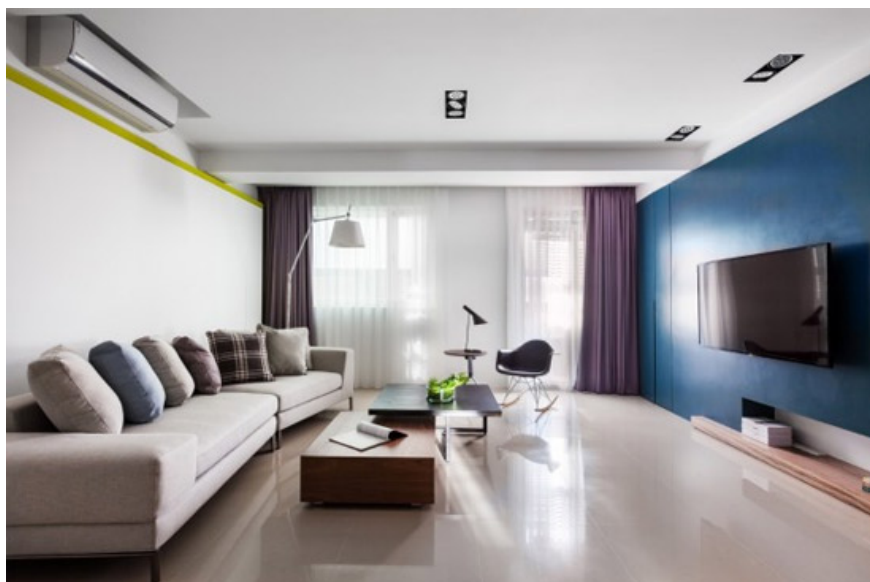
Another important note is to install the indoor unit higher than the outdoor unit, so that the oil can be returned to the engine block easily, helping to extend the life of the machine. The rack should be firm and well-bearing because the weight of the outdoor unit is usually over 20kg.



4. Reasonable interior layout:

Families also need to note the arrangement of furniture in air-conditioned rooms. Avoid placing large items such as cabinets, shelves . obstructing the machine, obstructing cold air flow, making the room long cool.

In addition, users can choose to buy air conditioner models with three-sided design. This design helps to accelerate the cooling effect thanks to the wide air intake mouth, which helps to get more air. The width, the corners of the air blowing mouth and the number of air inlets are also improved. Big fans push cold air further to 14m and spread evenly to many corners of the room.



Refer to the following articles:

1. Popular modes of use on air conditioners
1. Why does air conditioner blow out heat?
1. How to clean the air conditioner properly?

Hope this article is useful to you!

You finished reading the article "**Notes when installing air conditioners do not cost electricity**" edited by the [TipsMake](#) team. We hope this article has provided you with many useful tech tips and tricks. You can search for similar articles on tips and guides. Thank you for reading and for following us regularly.