

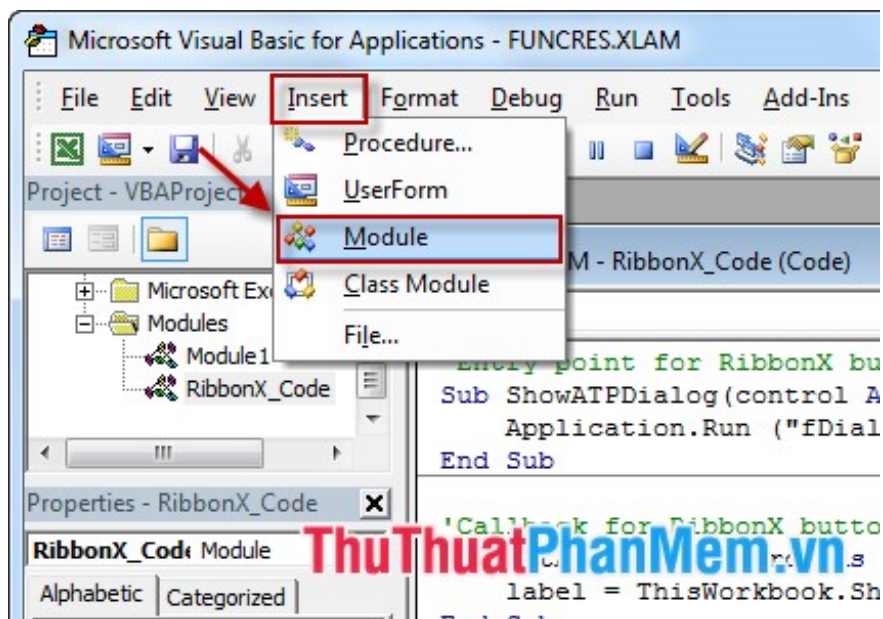
Normalize string when pressing Enter key in Excel

The following article will guide in detail how to use functions to normalize strings when pressing the Enter key in Excel. This function will remove spaces at the beginning and end of the line, delete two consecutive white space characters between words.

The following article will guide in detail how to use functions to normalize strings when pressing the Enter key in Excel. This function will remove spaces at the beginning and end of the line, delete two consecutive white space characters between words. Especially capitalizing the first letter in each word this is very suitable when entering the name field.

Step 1: Open the **Microsoft Excel** software .

Step 2: Press the key combination **Alt + F11** -> **Microsoft Visual Basic for Application** dialog box **appears** . Click **Insert** -> **Module** .



Step 3: A dialog box appears, enter the following code:

```

(Function) Chuanhoachuoi
Function Chuanhoachuoi(str As String) As String
    Dim sChuoi As String
    Dim mlen As Long
    Dim i As Long
    If Len(str) = 0 Then Exit Function
    str = Trim(str)
    mlen = Len(str)
    For i = 1 To mlen
        If Mid(str, i, 1) = " " And Mid(str, i + 1, 1) = " " Then
            str = Replace(str, " ", " ")
            i = i - 1
        End If
    Next

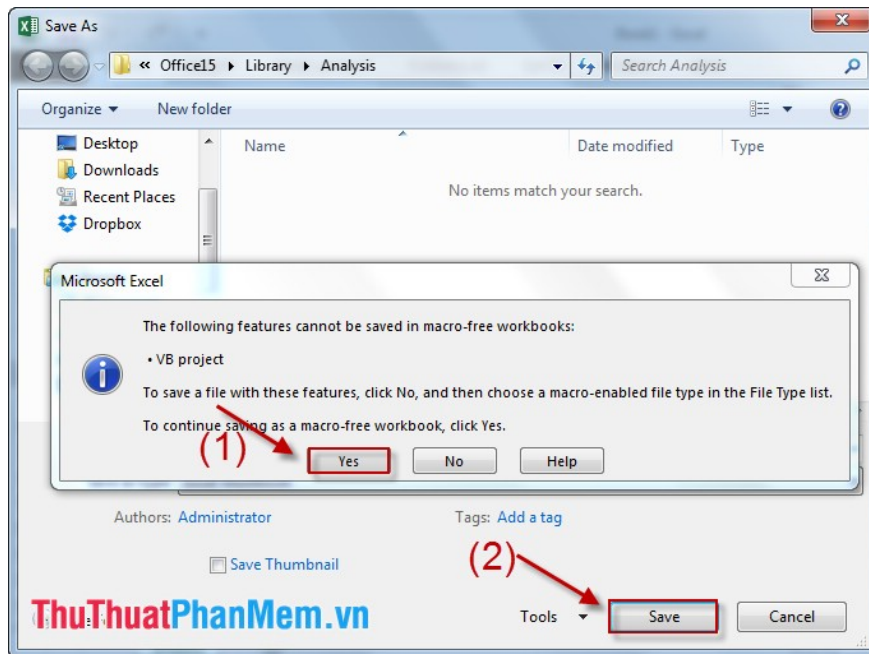
    For i = 1 To mlen
        If Mid(str, i, 1) = " " Then
            sChuoi = sChuoi & " " & UCase(Mid(str, i + 1, 1))
            i = i + 1
        Else
            If i = 1 Then
                sChuoi = UCase(Mid(str, 1, 1))
            Else
                sChuoi = sChuoi & LCase(Mid(str, i, 1))
            End If
        End If
    Next
    Chuanhoachuoi = sChuoi
End Function

```

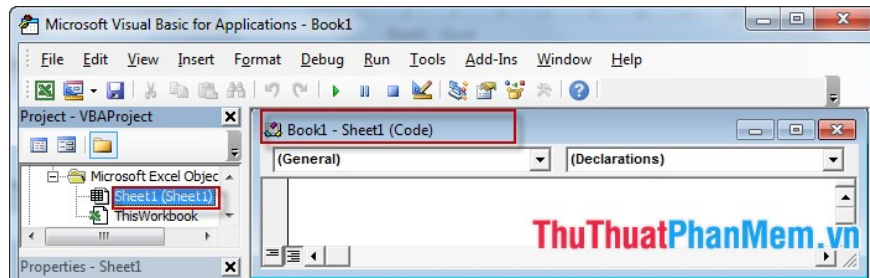
ThuThuatPhanMem.vn

Function Chuanhoachuoi (str As String) As String Dim sChuoi As String Dim mlen As Long

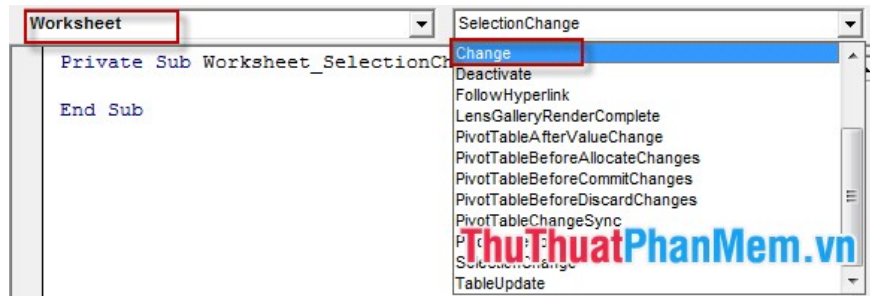
Step 4: After importing, select **Save** . Because the file contains a macro function, when saving Excel a message to save the Macro, you choose **Yes** . Then click **Save** to save.



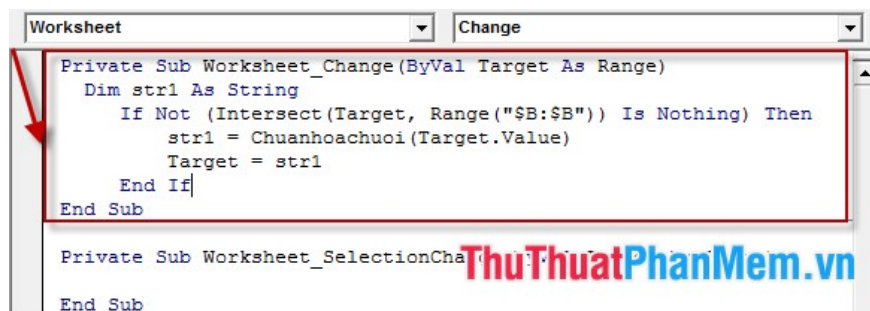
Step 5: Select **Sheet** using normalization function. Double click on **Sheet 1** as shown.



Step 6: Select the **Change** event for this Sheet. Under **General** select **WorkSheet** , section **Declarations** select **Change** .



Step 7: Enter the command for the **Change** event .



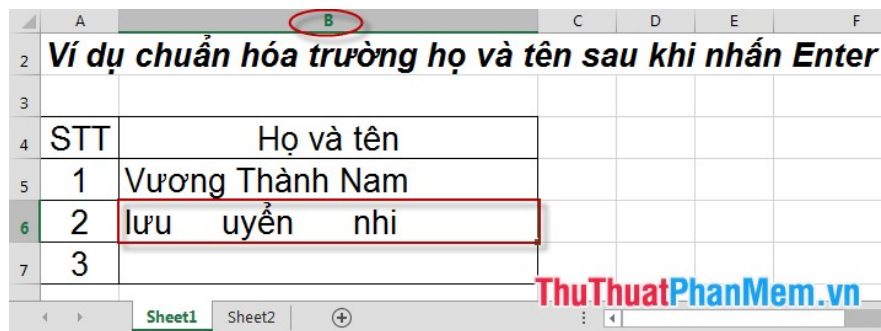
Private Sub Worksheet_Change (ByVal Target As Range) Dim str1 As String If Not

Note: Note the **Range** statement ("**\$ B: \$ B**") : column B uses the string normalization function. If you want to apply with another address can change as follows:

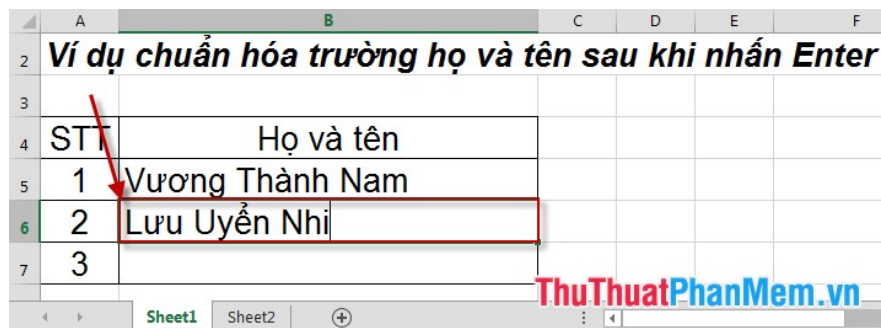
- Apply from column B to column C: **Range ("B: \$ C")** .
- Apply from cells F9 to F15 and from H7 to H19: **Range ("F9: \$ F15, \$ H7: \$ H19")** .
- Apply 2 non-consecutive columns: **Range (" \$ B: \$ B; \$ F: \$ F")** .

Step 8: Return to the Excel file. Applies to Sheet1 and column B using the standardized function.

- In column B enter your first name without capital letters first and between 2 words with many spaces.



- When you press **Enter** automatically capitalizes and removes extra spaces.



Good luck!

You finished reading the article "[Normalize string when pressing Enter key in Excel](#)" edited by the [TipsMake](#) team. We hope this article has provided you with many useful tech tips and tricks. You can search for similar articles on tips and guides. Thank you for reading and for following us regularly.