

Mysterious and strange places appearing on Google Earth are astonishing people.

The strange places on Google Earth might surprise you. Here are some mysterious locations on Google Earth.

The strange places on Google Earth might surprise you. Below are **some mysterious locations on Google Earth** .



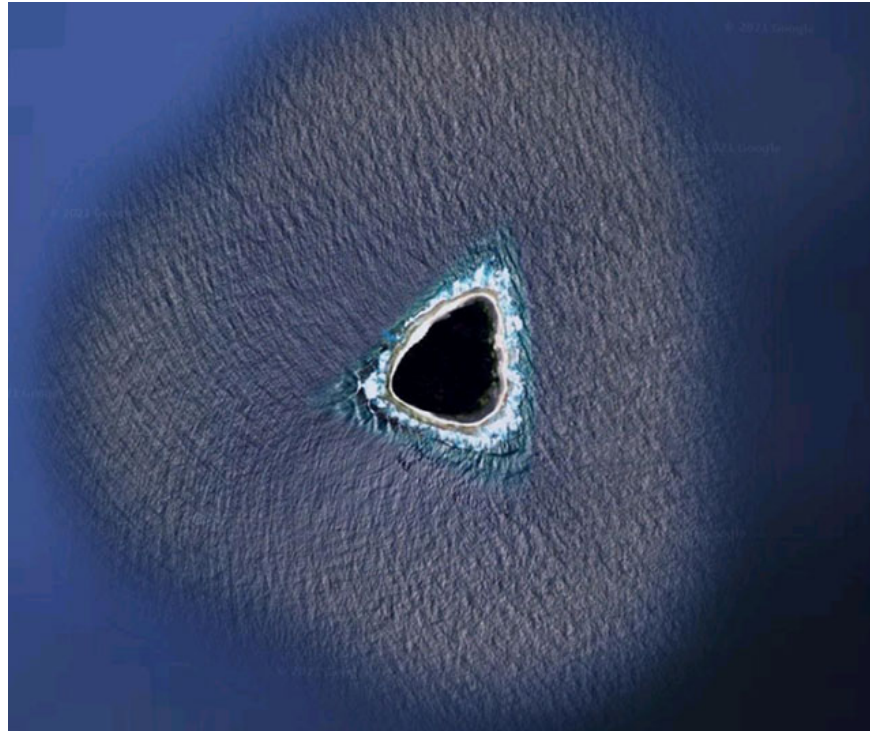
There are many strange things seen on Google Earth. This service, launched in 2005, aggregates images from a variety of sources, from geostationary satellites taking low-resolution pictures from tens of thousands of miles above Earth, to closer satellites taking higher-resolution pictures, and even images from airplanes, kites, drones, and even hot air balloons.

Images are available to everyone, and people all over the world have taken advantage of this rich resource to discover strange and wonderful places that, without them, might still remain undiscovered.

From a military aircraft junkyard to polka-dot patterns created by geological formations, to mysterious structures carved into the Gobi Desert, and even a strange black island in the Pacific Ocean, Google Earth — and the online community — have helped bring these places to light. Here are some of the strangest images.

Let's explore some famous locations discovered thanks to Google Earth.

"Black hole" in the middle of the Pacific Ocean



In 2021, Kokoblocks, a Reddit user, shared a photo of a "black hole" in the Pacific Ocean, found using Google Earth. The image immediately attracted attention and sparked heated debate. Some suggested it might be a secret base that had been obscured, while others believed it was a black hole containing a secret gateway to the Earth's center.

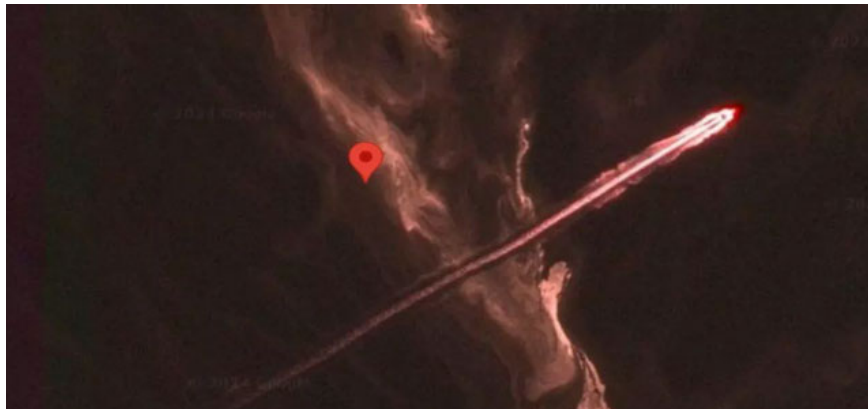
The truth was later revealed: the "black hole" in the photo was simply an uninhabited coral island called Vostok, approximately 24 hectares in size, under the sovereignty of the Republic of Kiribati in the Pacific Ocean. The dense foliage of Pisonia trees – a genus of plants thriving on Vostok Island – with their deep green color, made it appear black and created this misunderstanding.

A hellish pit in the forest



In a forest in the Abyysky district of the Sakha Republic, Russia, a mysterious sinkhole has been discovered. The area around the hole is covered in spontaneously rising sand and soil, with a dark rim inside. Scientists believe the hole may have been created by an explosion caused by global warming, resulting in a gas leak.

Comets over coral reefs



While using Google Earth, some people discovered a strange image: a long, bright red streak running along the coastal area of the Great Barrier Reef in Australia.

To date, no one has been able to determine what that streak of light was; it could be the movement of a ship or the trail of a comet passing by the coral reef.

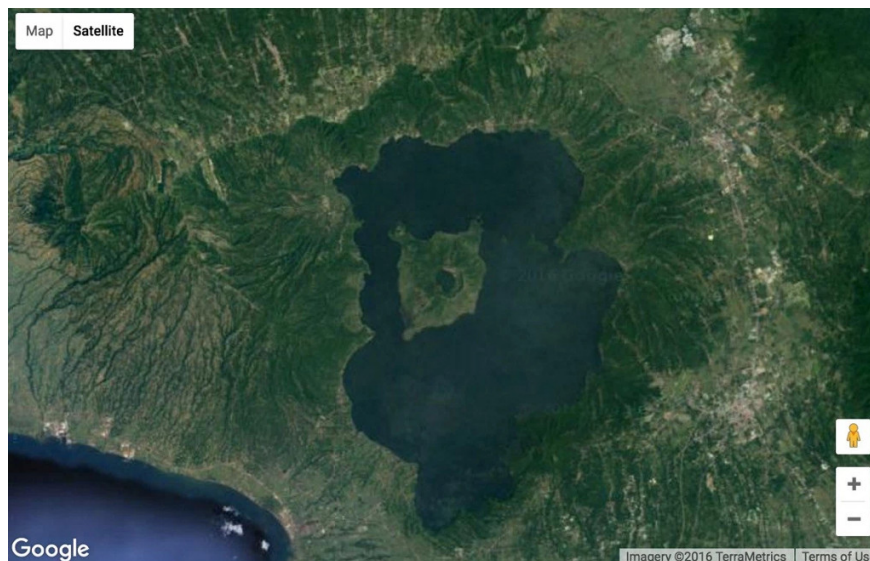
Mysterious Swastika symbol in northern Kazakhstan



Over 50 **ancient geollyphs** (giant drawings) have been discovered by scientists in northern Kazakhstan (in Central Asia). They are made from mounds of earth and wood in various geometric shapes such as rings, squares, crosses, and swastikas—an ancient symbol used by humans for approximately 12,000 years. These ancient geollyphs range in diameter from 90 to 400 meters, making them difficult to spot without Google Earth.

To date, scientists have not been able to determine who created the geollyph and for what purpose.

Island within an island in the Philippines



You'll be surprised and amazed by this incredibly strange "island within an island." In the Philippines, on **Luzon Island**, there's Lake Taal, within the lake is Mount Taal volcano, and on top of the volcano is another large lake, with the small island of Vulcan in the middle.



Luzon Island has become a popular tourist destination due to its unique island topography, one of the most distinctive in the world.

Strange wheels in Peru



Google Earth has helped scientists discover some ancient sculptural art on Earth. One of them is a wheel-shaped structure similar to the Nazca lines, dating back approximately 8,500 years in Peru.

These wheels come in many different shapes, from kite-shaped, wall-shaped, pendant-shaped, circular to rectangular. Their radius ranges from 25 to 70 meters. Some even have internal spokes.

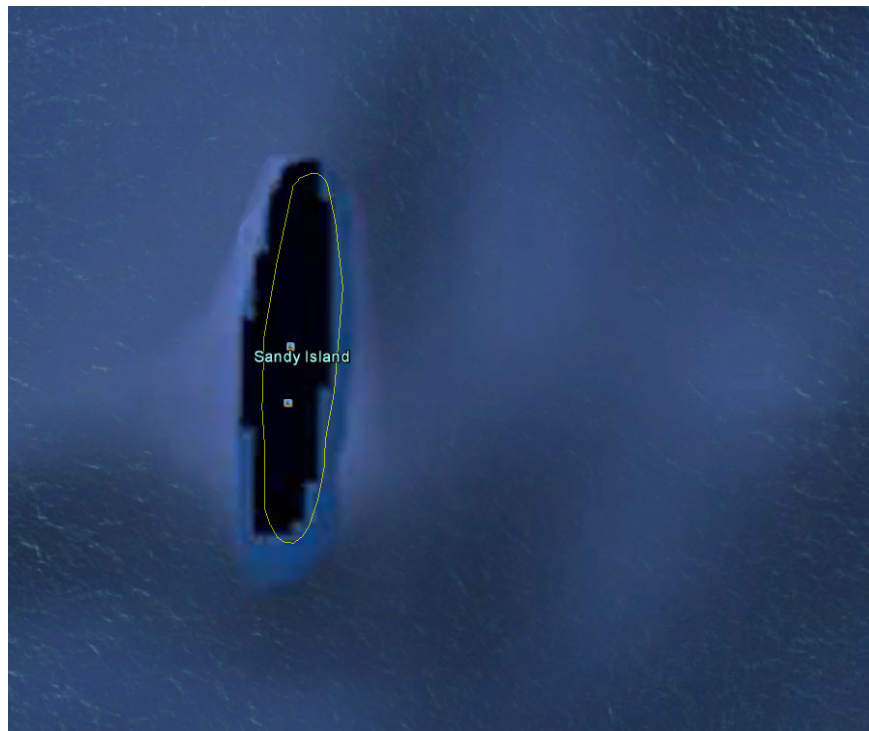
Before the availability of aerial imagery, archaeologists hypothesized that these structures might be the remains of cemeteries or houses. But after observing them from Google Earth, a new theory suggests they are related to **UFOs**.

Giant pyramids under the Pacific Ocean



Using Google Earth, a pyramid located beneath the Pacific Ocean has been discovered. It is estimated that this colossal structure is approximately 13 kilometers wide. From the images observed, scientists have been unable to determine whether it is a man-made structure or a natural formation. Excavation of this structure is necessary, but scientists are currently hampered by security policies and economic conditions in Egypt.

Mysterious ghost island



A mysterious island has appeared on Google Earth, all scientific maps, and weather maps, yet no one has ever set foot on it. This "ghost island" is called **Sable** and may be as large as 156 square kilometers.

In 2012, Australian scientists announced that this strange island did not exist. So why does it appear on maps and even Google Earth?

Mysterious giant five-pointed star in Kazakhstan



A giant pentagonal star, measuring up to 366 meters in diameter, has been discovered by Google Earth in a circle on the vast, windswept steppe of remote Kazakhstan. Why did this mysterious star appear in such a remote, uninhabited area?

Many believe that this five-pointed star is associated with the worship of demons, a cult, or some kind of mystical force.

Lake of blood in Iraq



On the outskirts of Sadr City, Iraq, at coordinates 33.396157° North latitude, 44.486926° East longitude, a pool of water has appeared that looks blood-red, terrifying many people. It is currently unclear whether this strangely colored lake is naturally occurring or due to polluted water being discharged into it.

UFO Triangle



In 2007, a strange triangle with a bright light was discovered at coordinates 30°30'38.44" South latitude, 115°22'56.03" East longitude in a field in Australia. Many Google Earth users believed this mysterious triangle was simply a random combination of remote-controlled antennas and farms in the area.

But UFO experts believe it's related to UFOs and extraterrestrials, and call it the "UFO Triangle".

Military aircraft graveyard



There are many secret military sites hidden away, few people know of their existence. But some of those sites have still been discovered by Google Earth. One of them is Davis Monthan Air Force Base in Tucson, Arizona. This is the "retirement" site of 2,600 US military aircraft.

The surface of Mars, perhaps?



Many people mistakenly believe this image of the Martian surface was taken from a satellite in space. But in fact, this is an image captured on Earth in the Algerian **desert** at coordinates 31°7' North latitude and 7°56' East longitude. Many were amazed when they saw this image on Google Earth.

Spiral shape in the desert



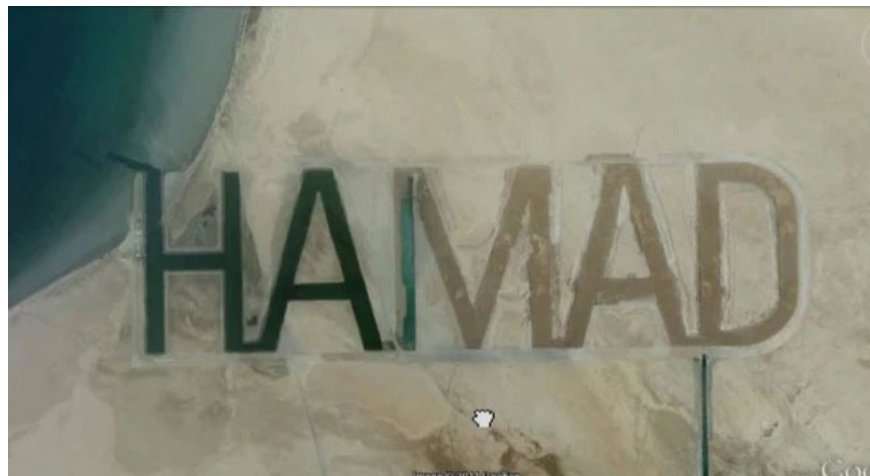
The giant spiral-shaped structure located in a desert in Egypt, near the Red Sea coast, which has caused much bewilderment and astonishment, is actually an artwork called Desert Breath, created in 2007 by three artists, Danae Stratou, Alexandra Stratou, and Stella Constantinides, covering an area of ??100,000 square meters.

The Art of Ants



Google Earth has discovered strange dots near Vulcan's Throne volcano on the northern rim of the Grand Canyon. Scientists explain that these mounds are created by fire ants (*Pogonomyrmex barbatus*) that live around the Grand Canyon. According to physicist Amelia Carolina Sparavigna, these ants can create mounds that extend up to 120 cm.

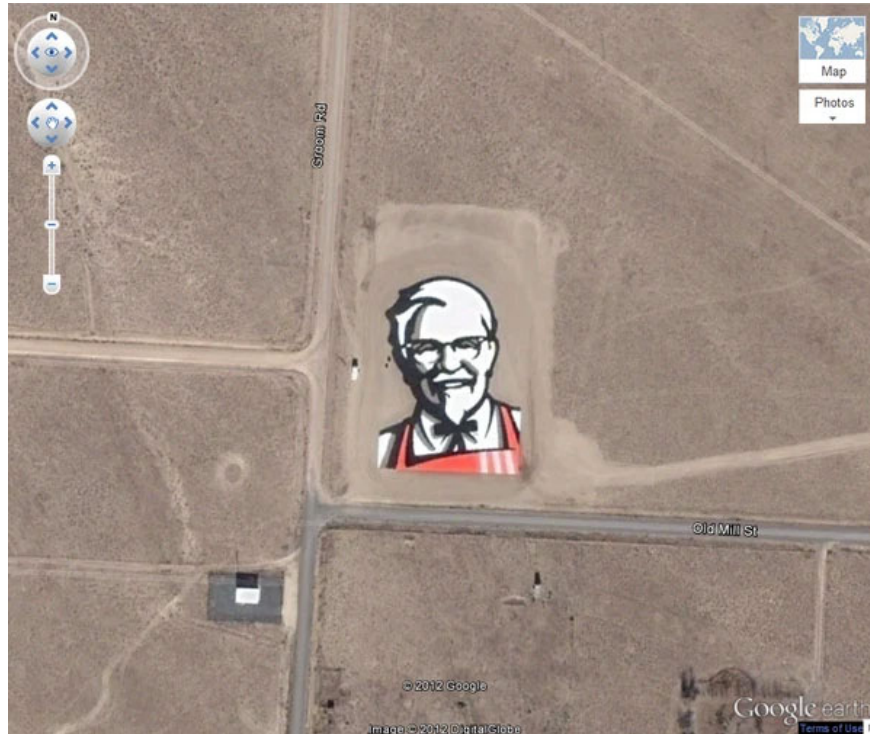
The world's largest inscription.



The HAMAD inscription is 800 meters high and 3.2 kilometers long, and can be seen from space. This inscription is the name of Hamad bin Hamdan al Nahyan, a billionaire and member of the royal family of the United Arab Emirates (UAE), and was created on the sand of al Futaisi Island, an island he owns in the Persian Gulf.

At the time this photo was taken, the tide was flowing over the letters. The lettering is no longer there.

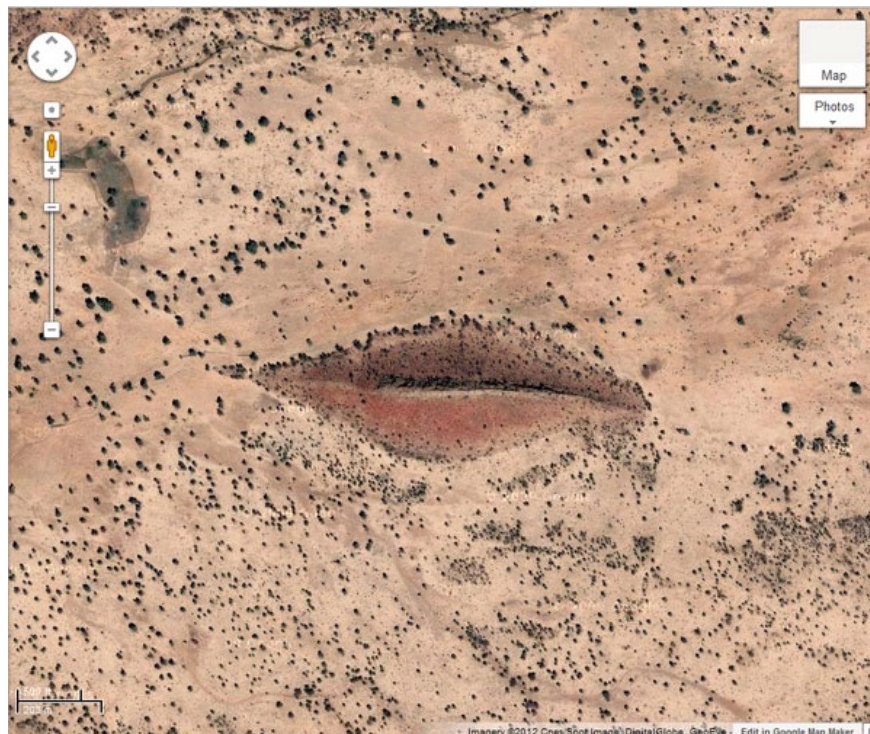
KFC and Coca-Cola commercials



The Coca-Cola logo can be formed from 7,000 empty bottles and is visible at coordinates 18.5292 S, 70.2500 W.

Besides Coca-Cola, KFC also utilizes Google Earth for advertising. A giant KFC logo even appeared at coordinates 37.646163° N, 115.750819° W.

The lips of the Earth



This is a hill located in Gharb, Sudan, at coordinates 12°22'13.32"N, 23°19'20.18"E. Viewed on Google Earth, it resembles a pair of alluring, luscious lips.

You finished reading the article "**Mysterious and strange places appearing on Google Earth are astonishing people.**" edited by the [TipsMake](#) team. We hope this article has provided you with many useful tech tips and tricks. You can search for similar articles on tips and guides. Thank you for reading and for following us regularly.