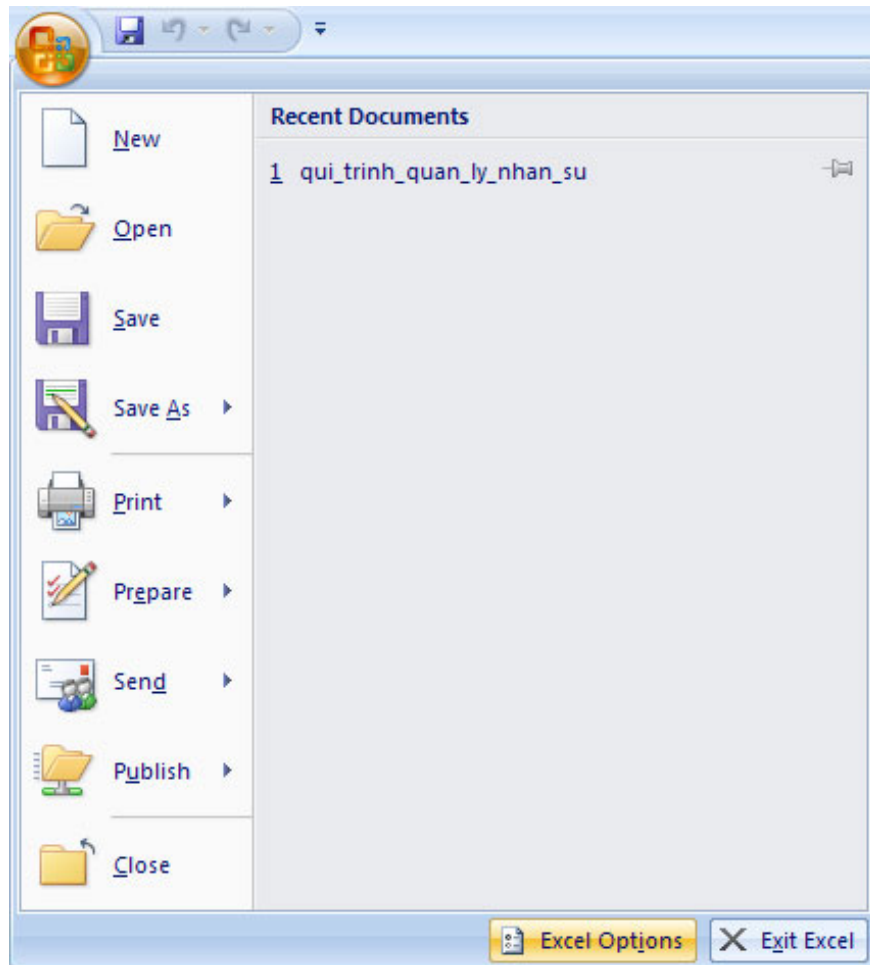


# MS Excel 2007 - Lesson 2: Customizing in Excel

Excel 2007 provides a wide range of customizable options, allowing you to work with Excel in the most convenient way.

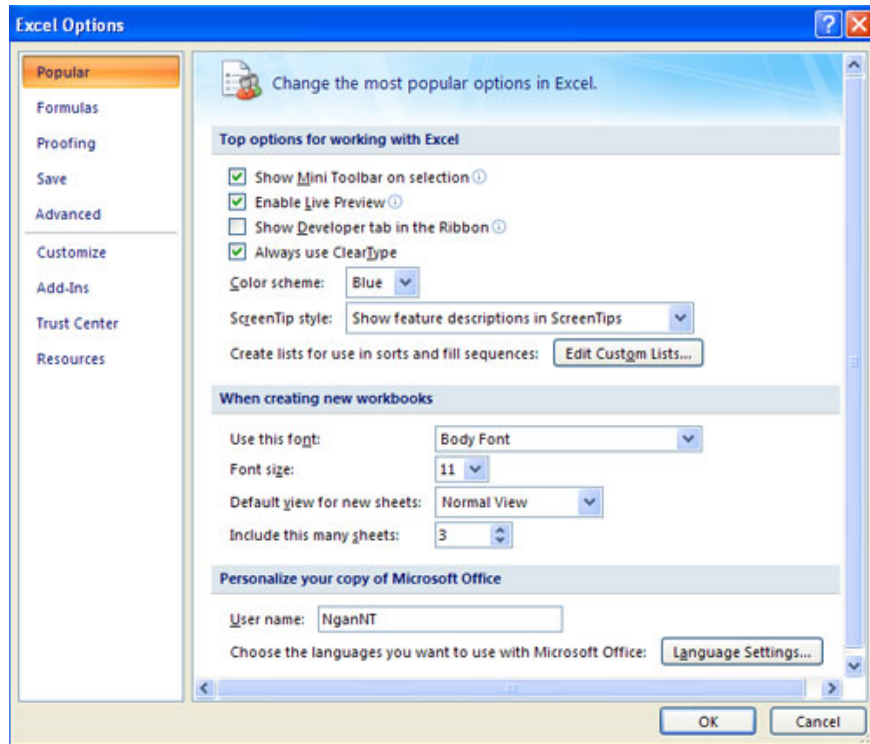
**TipsMake.com - Excel 2007 provides a wide range of customizable options, allowing you to work with Excel in the most convenient way.** To access these options:

- Click **Office Button**
- Click **Excel Options**



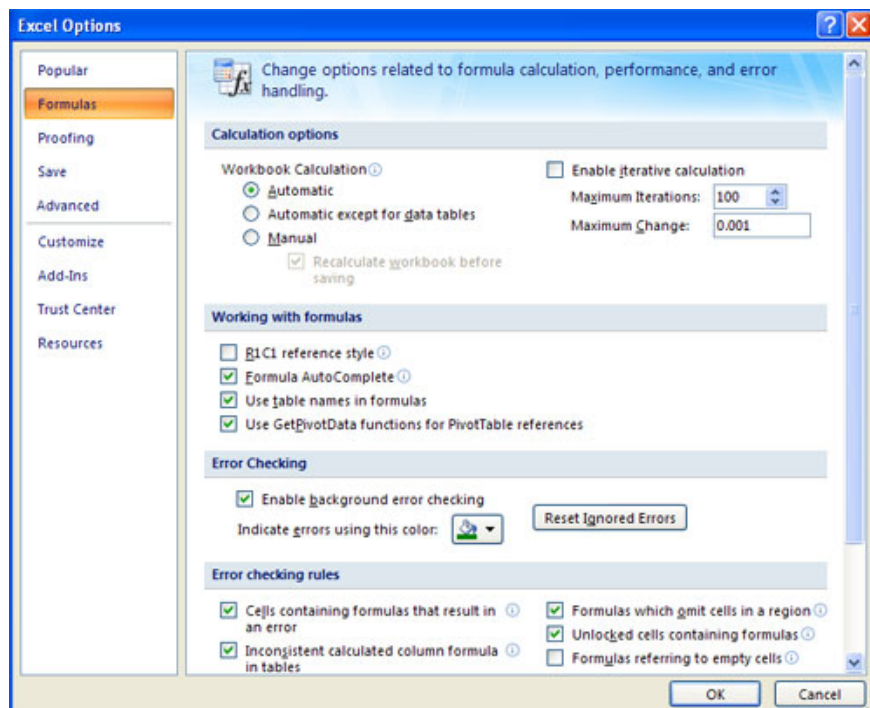
Popular

These features allow you to define a working environment with a mini toolbar, color combinations, workbook default options, sort and enter user names and allow you to access the **Live** feature. **Preview** . The Live Preview feature allows you to preview the results of design and format changes.



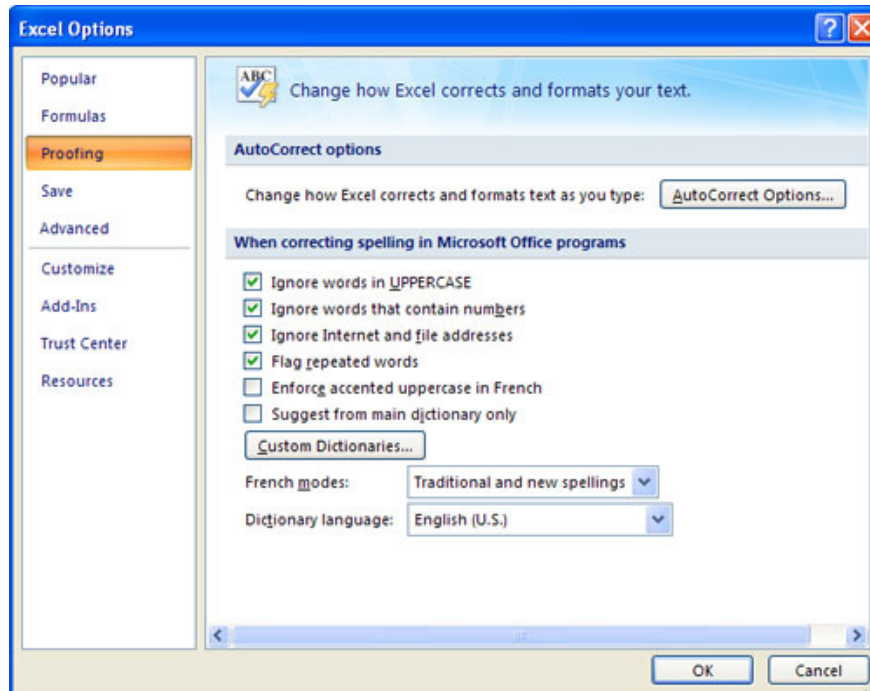
## Formulas

This feature allows you to define calculation options, work with formulas, check errors and check rules.



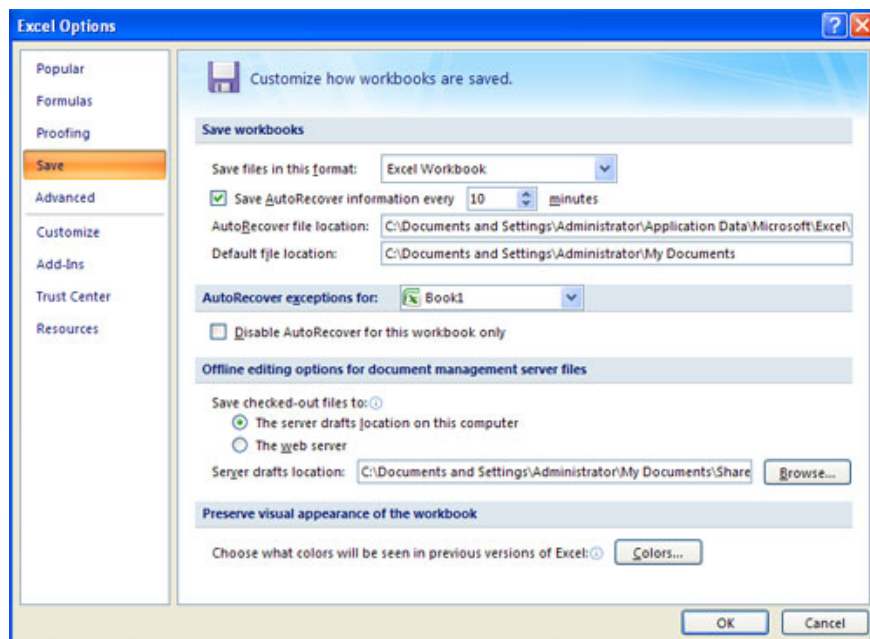
## Proofing

This feature allows you to define how to edit and format words for text. You can customize the settings automatically and ignore words or errors in the document through Custom Dictionaries.



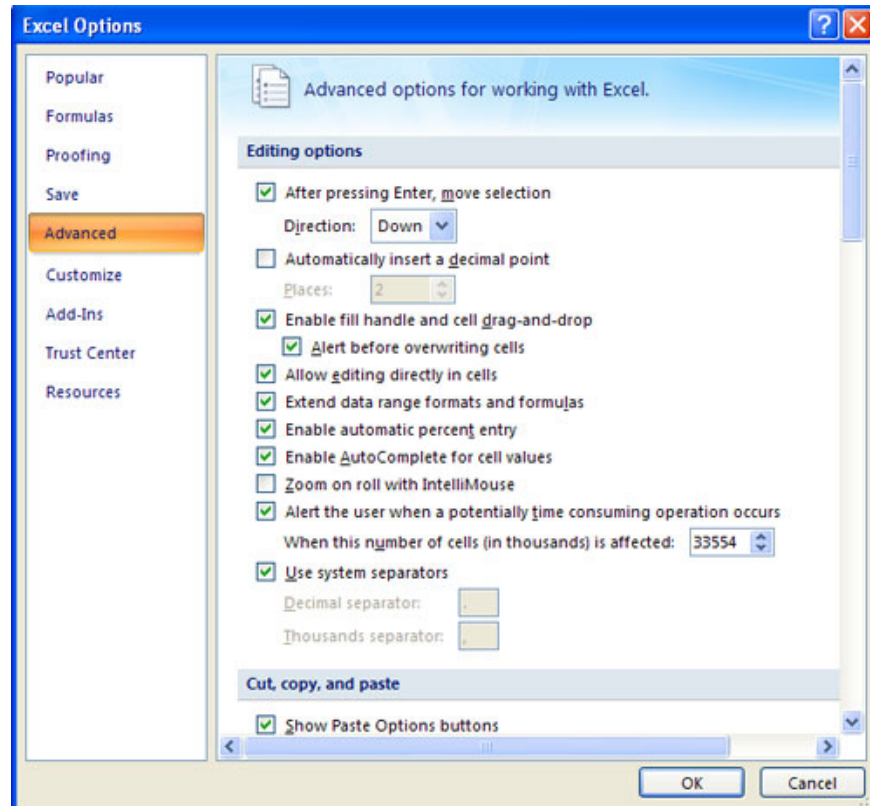
## Save

This feature allows you to determine how a workbook is saved. You can specify how to automatically save when running and where you want the workbook to be saved.



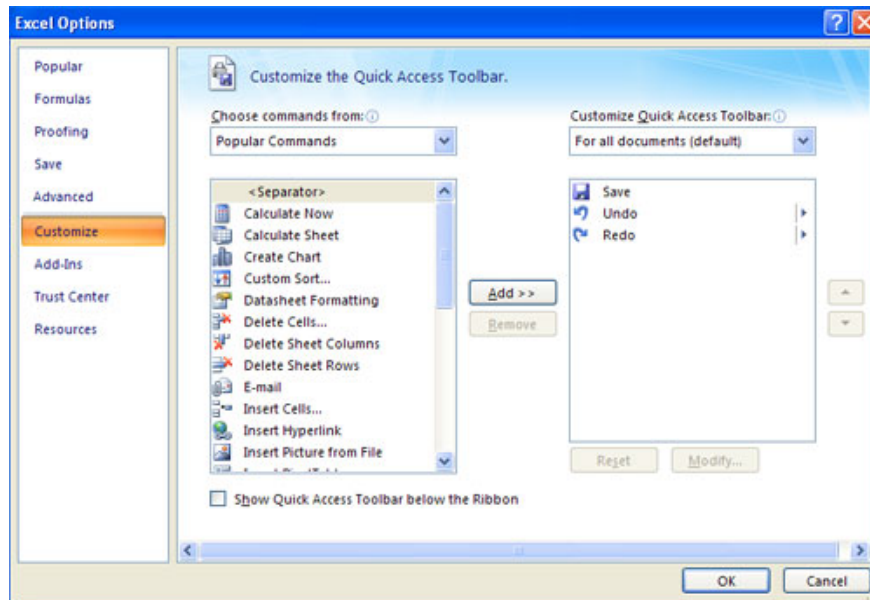
## Advanced

This feature allows you to specify options for editing, copying, pasting, printing, displaying, formulas, calculations and other settings.



## Customize

This option allows you to add features to the Quick Access Toolbar. If there are many tools that you use often, you may want to add them to the Quick Access Toolbar.



Previous article: MS Access 2007 - Lesson 1: Start with Microsoft Access 2007

You finished reading the article "**MS Excel 2007 - Lesson 2: Customizing in Excel**" edited by the [TipsMake](#) team. We hope this article has provided you with many useful tech tips and tricks. You can search for similar articles on tips and guides. Thank you for reading and for following us regularly.

---