

Move mailboxes between IMAP servers with IMAPcopy

IMAPCopy allows you to recursively copy all email messages and folders from another IMAP account. It supports IMAP and IMAPS protocols. In this article we will guide you to move mailboxes between IMAP servers using IMAPcopy.

TipsMake.com - IMAPCopy allows you to recursively copy all email messages and folders from another IMAP account. It supports IMAP and IMAPS protocols. In this article we will guide you to move mailboxes between IMAP servers using IMAPcopy.

Some notes when using the program:

1. IMAPcopy only has a copy function, does not delete mail in the source mailbox.
2. To use the program, you must activate the IMAP protocol in both the source mailbox and the destination mailbox.
3. You can only copy mail in *INBOX* , not copy in *SENT* , *DELETED* , *TRASH* . If you use mail client program (MS Outlook, Mozilla Thunderbird, .) to trade mail, when copying mail via mailbox new, the mail client will have to download the whole mail.

In the following illustration we use two Debian or Ubuntu servers. For other distributions, the process is similar, except that the difference between Java and IMAPcopy is different.

Source server: *server1.example.com* .

Destination server: *server2.example.com* .

Our purpose is to move the mailbox *sales@example.com* (username: *sales@example.com* , password: *secret*) on *Server1.example.com* to the *sales@example.com* mailbox on *server2.example.com* (The username and password are the same as on *server1.example.com*).

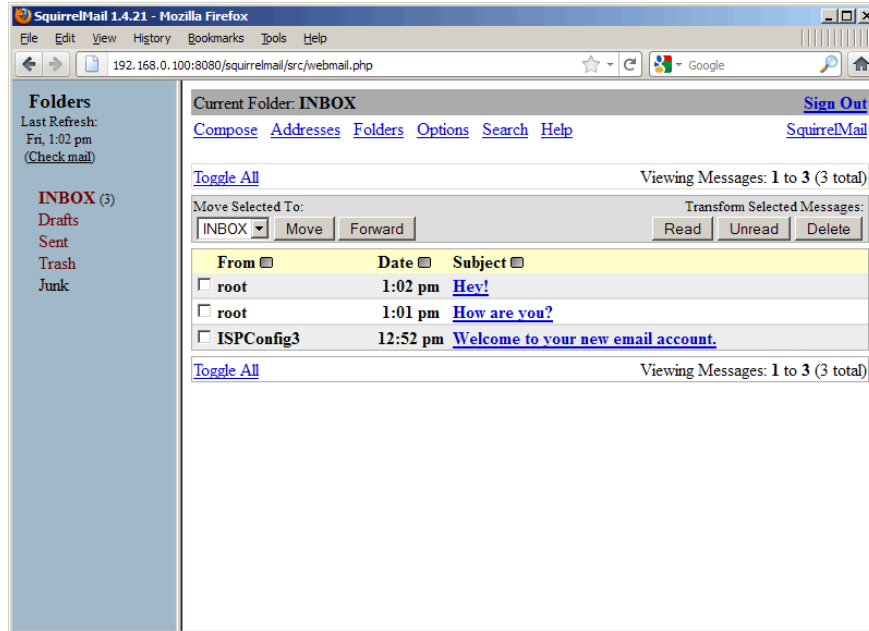
In addition, Ubuntu users should note that the following command must be run as *root* , so either add the *sudo* string after each command line or become root with the command:

```
sudo su
```

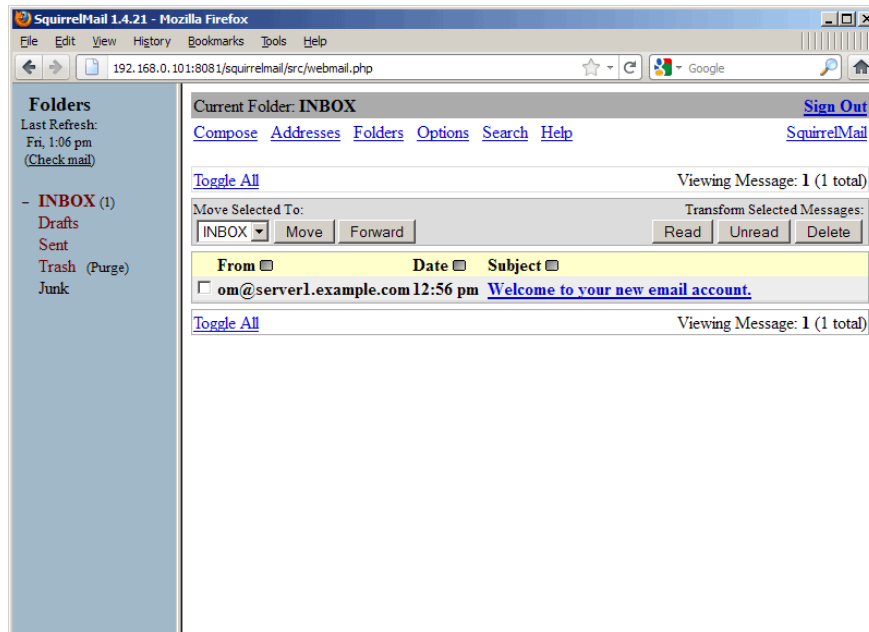
Prepare

Before we get started, let's check both mailboxes to see what's in it (you can do this by any email client service like Outlook, Thunderbird or web mail like SquirrelMail we use below.) here).

server1.example.com:



server2.example.com:



After doing the following, the three messages in *server1.example.com* will appear in *server2.example.com* .

IMAPcopy settings

It is not important to install IMAPcopy on *server1.example.com* or *server2.example.com* , you can even install it on a 3rd machine without any trouble.

However, installing Java is necessary with IMAPcopy, so we will install the **openjdk-6-jre** package. In addition, make sure that the unzip is installed in order to extract the IMAPcopy package.

```
apt-get install openjdk-6-jre unzip
```

Next download and install IMAPcopy in the path `/usr/local/imapcopy/` as below:

```
cd /usr/local/  
mkdir imapcopy  
cd imapcopy  
wget http://imapcopy.googlecode.com/files/imapCopy0.3.1.zip  
unzip imapCopy0.3.1.zip
```

Execute the script `/usr/local/imapcopy/imapCopy.sh` :

```
chmod +x /usr/local/imapcopy/imapCopy.sh
```

Proceed to move the mailbox

After successful installation, you start using IMAPcopy as follows:

```
/usr/local/imapcopy/imapCopy.sh protocol: // user [: password] @server [: port] protocol: // user [: password]  
@server [: port]
```

This protocol can use IMAP or IMAPS. If the username is the email address to note, replace @ with **% 40** . Finally the command line to copy email messages from *sales@example.com* on *server1.example.com* to *sales@example.com* on *server2.example.com* will be:

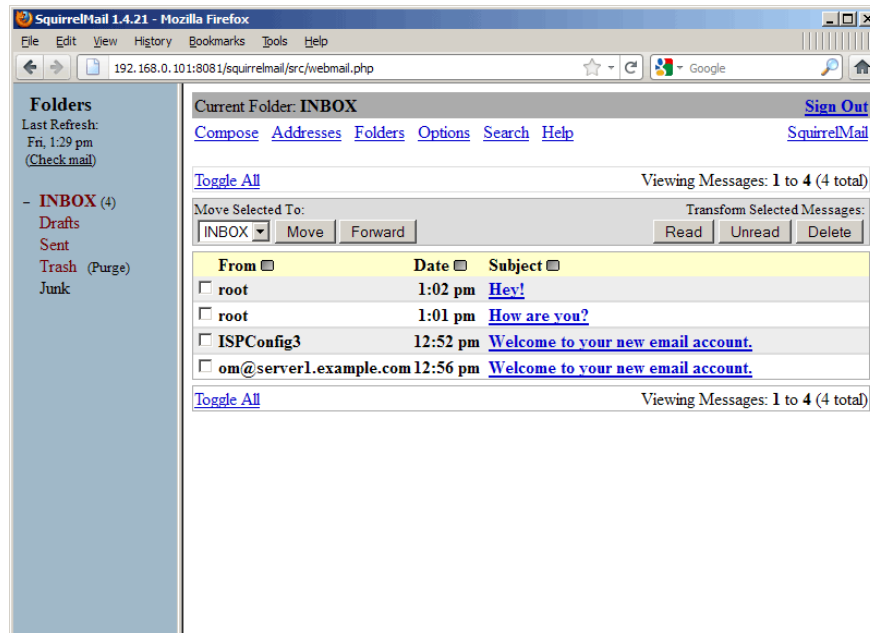
```
/usr/local/imapcopy/imapCopy.sh imap: //sales%40example.com: secret@server1.example.com imap:  
//sales%40example.com: secret@server2.example.com
```

And here is an example of output:

```
root @ server1: /usr/local/imapcopy # /usr/local/imapcopy/imapCopy.sh imap: //sales%40example.com:  
secret@server1.example.com imap: //sales%40example.com: secret @ server2.example.com  
2011-09-30 13:28: 27,751 INFO ImapCopier - Starting  
2011-09-30 13:28: 27,751 DEBUG ImapCopier - Parameters length: 2  
2011-09-30 13:28: 27,751 DEBUG ImapCopier - opening conections  
2011-09-30 13:28: 27,751 DEBUG ImapCopier - opening of the conection imap server1.example.com  
2011-09-30 13:28: 28,737 DEBUG ImapCopier - opening conection to imap server2.example.com  
2011-09-30 13:28: 28,998 DEBUG ImapCopier - Creating target Folder: Drafts  
2011-09-30 13:28: 29,030 DEBUG ImapCopier - Copying 0 messages from Drafts Folder  
2011-09-30 13:28: 29,033 DEBUG ImapCopier - Creating target Folder: Junk  
2011-09-30 13:28: 29,058 DEBUG ImapCopier - Copying 0 messages from Junk Folder  
2011-09-30 13:28: 29,059 DEBUG ImapCopier - Creating target Folder: Trash  
2011-09-30 13:28: 29,061 DEBUG ImapCopier - Copying 0 messages from Trash Folder  
2011-09-30 13:28: 29,061 DEBUG ImapCopier - Creating target Folder: Sent  
2011-09-30 13:28: 29,120 DEBUG ImapCopier - Copying 0 messages from Sent Folder  
2011-09-30 13:28: 29,527 DEBUG ImapCopier - Copying 3 messages from INBOX Folder
```

root @ server1: /usr/local/imapcopy #

Now on the destination server (*server2.example.com*) will see the email from *server1.example.com* :



You finished reading the article "**Move mailboxes between IMAP servers with IMAPcopy**" edited by the [TipsMake](#) team. We hope this article has provided you with many useful tech tips and tricks. You can search for similar articles on tips and guides. Thank you for reading and for following us regularly.