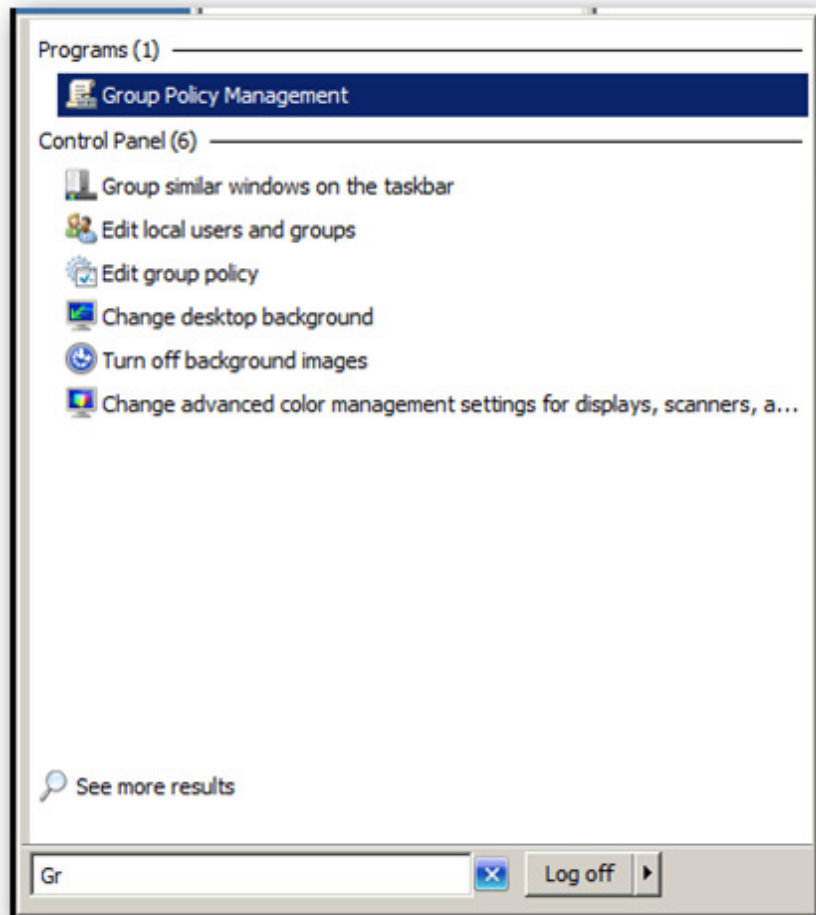


Mount Network Drive on Windows Client using Group Policy

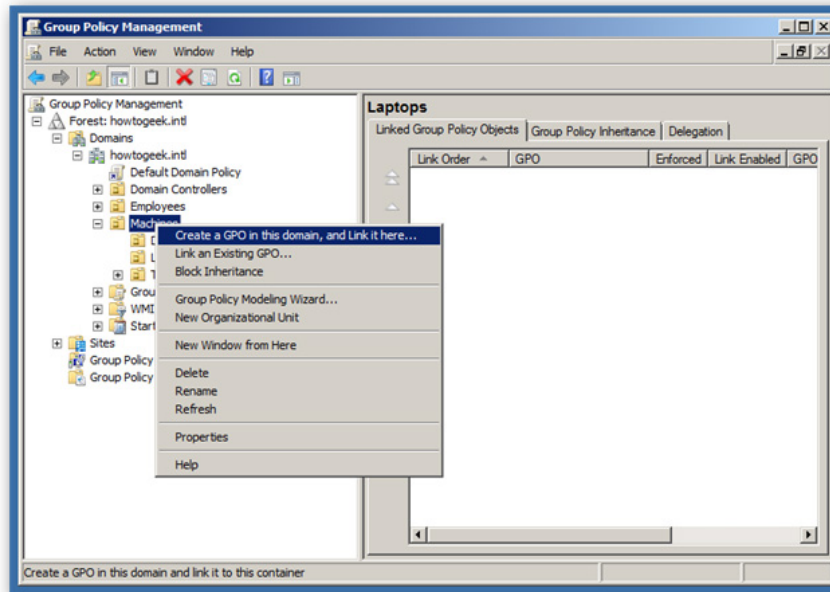
The job of mapping network drives is one of the most commonly done tasks of system administrators, this process was often done by scripting. In the following article, we will show you how to do this via Group Policy in Windows ...

TipsMake.com - The job of map network drives is one of the most commonly done tasks of system administrators, this process was usually done by script . In the following article, I will show you how to do this through Group Policy in Windows.

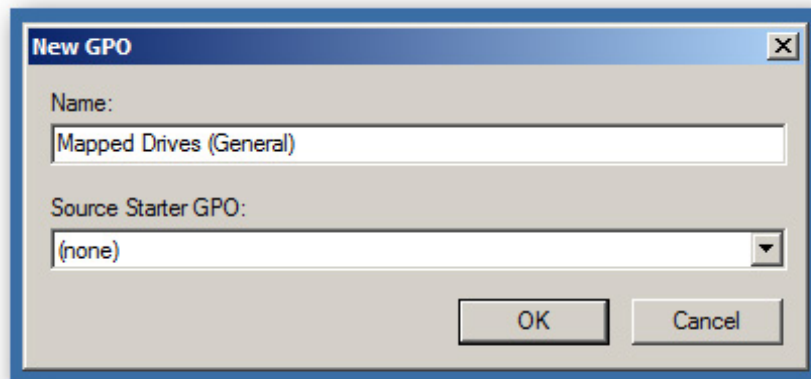
First, open the **Group Policy Management Console** from the **Start Menu**:



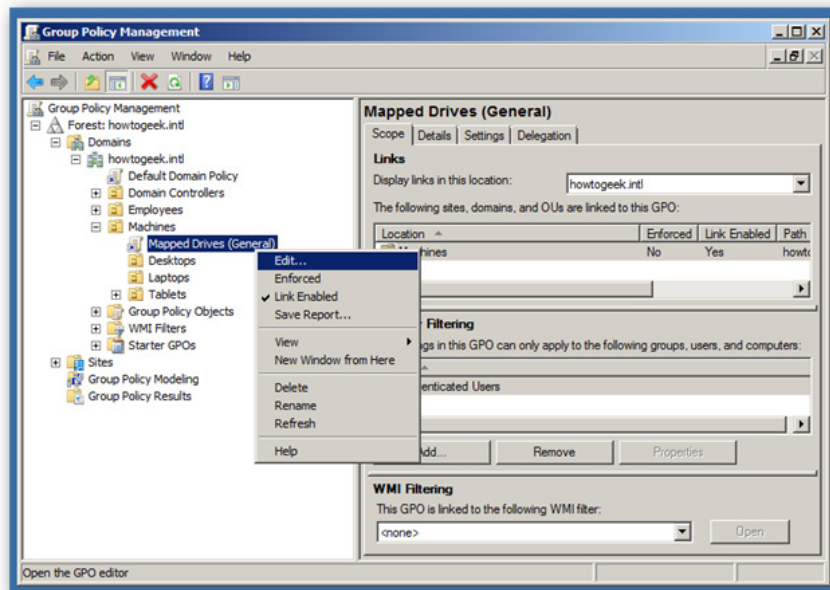
Scroll down to the list of domains until you see the Machines object, right-click and select **Create a GPO** .



Name this new policy, for example here is **Mapped Drives (General)**:



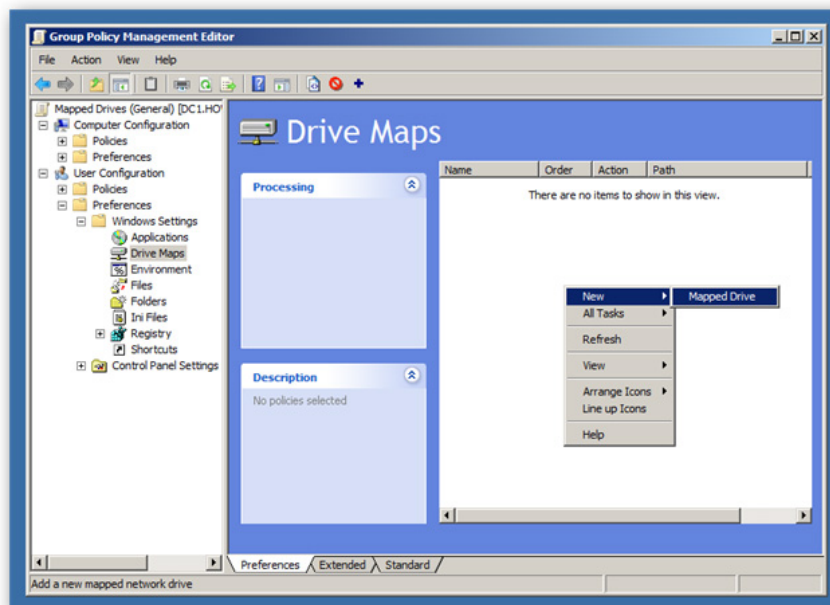
Then, right-click that policy and select **Edit** :



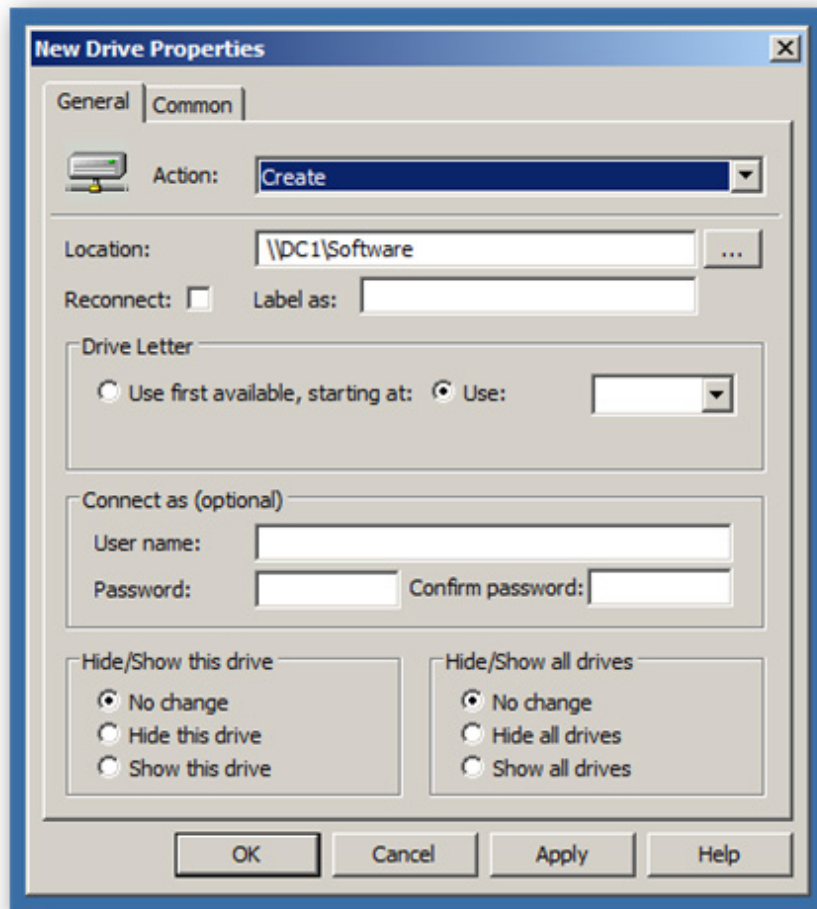
Policies that control the disk connection process are fixed in position:

User Configuration > *Preferences* > *Drive Maps*

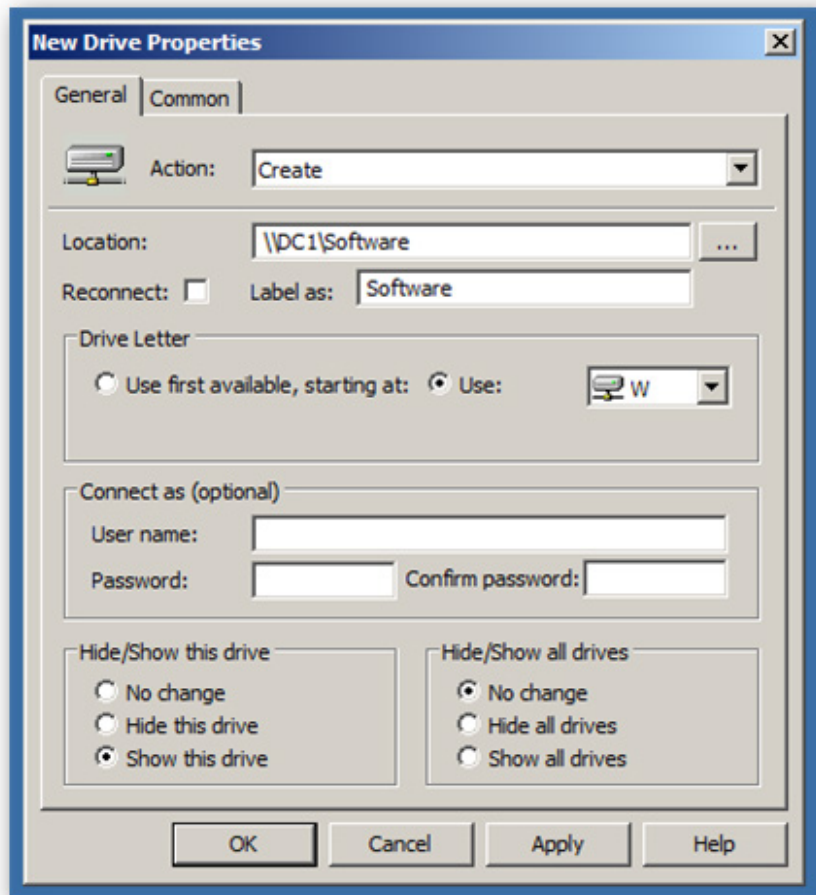
After selecting policy, right-click on the white window on the right and select **New > Mapped Drive**:



Change **Create** in the **Action** section, enter the path to the shared folder:



Name in the **Label** section - this is the name that will appear when connecting to another computer, select the drive letter in the **Drive Letter** section , change the **Show this drive setting** as shown below:



Then, when the user logs on to the computer, the system drive is automatically connected. Good luck!

You finished reading the article "**Mount Network Drive on Windows Client using Group Policy**" edited by the [TipsMake](#) team. We hope this article has provided you with many useful tech tips and tricks. You can search for similar articles on tips and guides. Thank you for reading and for following us regularly.