

Model of Fujifilm surveillance camera with the ability to zoom in and out of a person from more than 2km away

Fujifilm has equipped its products with excellent zoom capabilities.

The high-end phones owning camera clusters with super-zoom capabilities, clearly looking at 'pores' are the trend of gaining much attention in the smartphone world since the beginning of the year, and seemingly 'hot'. This trend is tending to bloom again in the surveillance camera market.

Recently, an old name in the photography industry - camera: Fujifilm, officially marked its re-launch in the surveillance camera market with the model SX800, a modern long-range surveillance camera model capable of Up to 40x optical zoom, designed as an excellent solution for the requirements of public security systems, in businesses, large commercial facilities, and in particular can be installed densely on streets to control traffic violations as well as theft and robbery.

1. Why does today's smartphone have a higher resolution than professional cameras and cheaper resale prices?



The SX800 - a product that marks Fujifilm's strong return in the surveillance camera market

Fujifilm's SX800 is equipped with an integrated lens with focal length ranging from 20mm to 800mm and 1.25 times of digital zoom capability. Combining all the technical details, the Japanese manufacturer said that the SX800 possesses a total focal length equivalent to 1000mm, which is enough for the camera to see every detail in a license plate. usually from a distance of more than 1km.

Previously, we have seen some commercial camera models that support better zoom capabilities than the SX800 (such as Nikon's P1000 with a zoom lens equivalent to 125x, 3000mm), but the difference is important. This is where Fujifilm has equipped its commercial security camera with some useful digital tweaking features that the vast majority of products in the same segment currently do not have. These features make the scenes of the SX800 clear and valuable for practical use when shooting at such extreme distances.

1. This application can help smartphones with ToF cameras see through the night



Fujifilm SX800 works best when installed in large areas

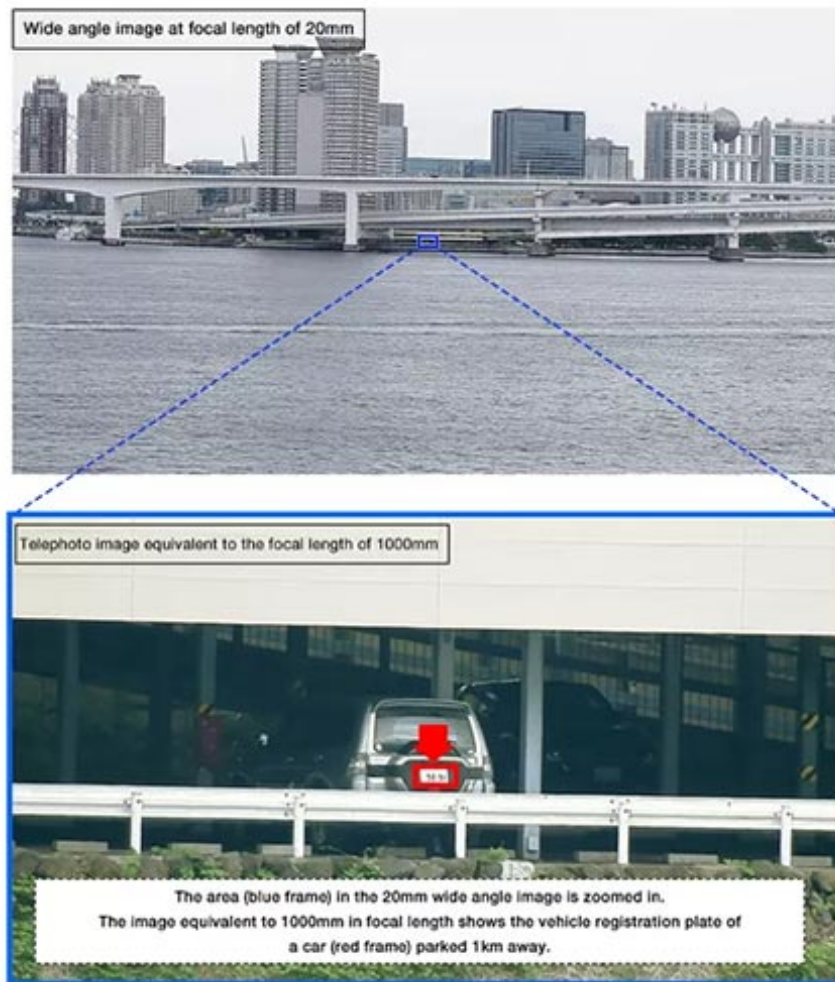
Accordingly, Fujifilm has equipped its products with ultra-fast autofocus, perfect autofocus within 0.3 seconds, along with the ability to stabilize optical images and especially one. Image processing tools can help reduce the impact of objective factors from the environment such as fog, smoke, high temperature. In addition, the SX800 also supports the ISO level of up to 819200, directly targeting the need for rotation. movies at night. All of these quality equipment make this camera perfect for many practical tasks.

To reinforce the SX800's excellent practical use, Fujifilm has released a promotional video showing how this camera is capable of illuminating a series of hand gestures from a person standing 2.2km away (about 1.36 miles), while another video shows a clear picture of those visiting on the Tokyo Tower observatory from even more hegemonic distance, approximately 3km (about 1.86 miles).

1. China developed cameras that can take pictures 45km away, through fog and dust

Video advertising zoom capabilities and technology equipped on Fujifilm SX800

Or as the image below, Fujifilm's SX800 can clearly see all details printed on a license plate at a distance of 0.6 miles (1km) in relatively murky weather conditions.



Fujifilm SX800 can clearly see license plate numbers from a distance of 1 km

The SX800 is a versatile security camera, however, according to Fujifilm's recommendation, this product will be most effective when used in areas such as international borders, public sector, or other Public facilities such as airports, ports, and especially highways.

1. The Huawei P30 Pro camera is so powerful that it can capture the moon image clearly

On the positive side, products like the SX800 will be a great solution for the need to build a security surveillance system strong enough to cover extremely large areas where conventional CCTV systems are difficult to promote efficiency. It can also act as a way to help raise public awareness in public areas, a small reminder of the fact that 'there are no security cameras around you that do not mean behaviors. Your 'standard' is undetected, because most of your behavior has been recorded from miles away. However, there are also many concerns about cameras with super zoom capabilities that would be a threat to privacy if they fall into the hands of "fancy" people.

Fujifilm SX800 will be officially released tomorrow, July 26, but the price of the product has not been made public.

You finished reading the article "**Model of Fujifilm surveillance camera with the ability to zoom in and out of a person from more than 2km away**" edited by the [TipsMake](#) team. We hope this article has provided you with many useful tech tips and tricks. You can search for similar articles on tips and guides. Thank you for reading and for following us regularly.

