

Microsoft's decision to turn Windows 10 S into a mode instead of an ordinary OS version

Windows 10 S is being converted into a mode, running on Windows 10 Home and Pro instead of a separate OS. What does that mean and what will it change?

Windows 10 S is being converted into a mode, running on Windows 10 Home and Pro instead of a separate OS. What does that mean and what will it change?

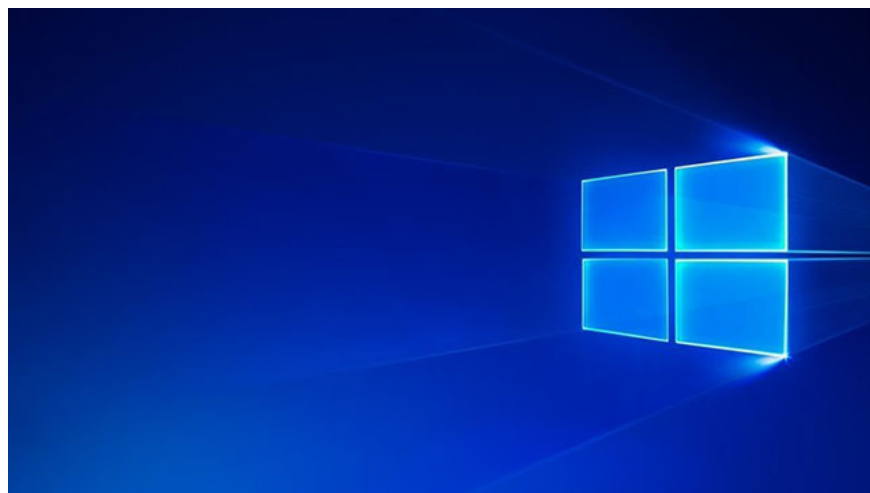
News recently said Windows 10 S will turn into a mode running on other versions of Windows 10 like Home or Pro has caused many confusion for users. Some say that Windows 10 S is dead, while some say Windows 10 S will become the default option on Windows 10.

Microsoft is about to give up Windows 10 S, replacing it with S Mode

Take a deep look at the changes that this decision made by Microsoft on their desktop OS.

Windows 10 S does not (not yet) die

Microsoft didn't leave Windows 10 S. In fact, this year, we'll see more PCs running Windows 10 S when Microsoft doesn't show signs of stopping, just that they change the way Windows S is delivered to vendors. Export (OEM).



Turning Windows 10 S into a mode will be easier for hardware manufacturers

Previously, this OS was a separate version of Windows 10, along with Windows 10 Home and Windows 10 Pro. Manufacturers can choose 1 of 3 OS. Now Microsoft releases Windows 10 S as a separate version and converts it into a mode, running on Windows 10 Home or Windows 10 Pro.

This means that the manufacturer can choose one of the two old OS versions, and choose whether or not S mode is turned on by default. Theoretically this makes it easier for manufacturers to access Windows 10 S, users can easily switch to S mode and the Home or Pro version 'has not been unlocked'.

Turning Windows 10 S into mode also helps extend S to computer manufacturers, they can install a copy of Windows and still add 10 S to it. So Microsoft's decision didn't kill Windows 10 S, but it made it easier to popularize.

Windows 10 S will not be enabled by default

S mode does not affect the current Windows 10 installation. This means that if you are using Home or Pro, you are not forced to switch to S mode when updating.

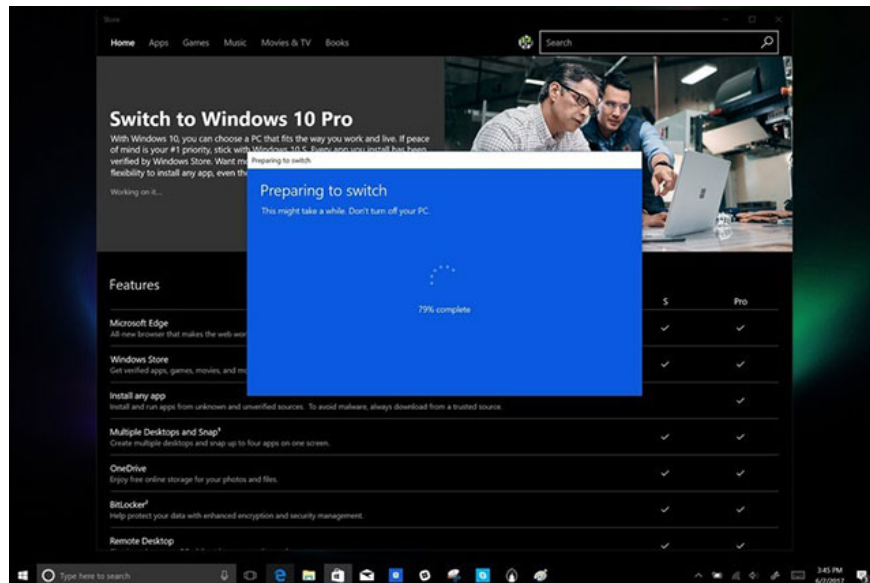
Microsoft does not force manufacturers to make S mode the default mode. In fact, it would be cheaper for OEMs to put it on hardware. OEMs are also not required to use S mode, which means that OEM partners such as Dell or HP may continue to sell Windows machines without the S mode.

Microsoft wants them to choose Windows 10 with S mode but doesn't mean they will have to. Windows 10 Home with S mode will be cheaper than no S version but hardware manufacturers can still pay more if they want to leave S mode, and the Pro version too.

This means that you will find many machines with Windows 10 S cheaper. This helps Microsoft bring Windows 10 S to more devices and gives users the opportunity to upgrade without paying extra.

Upgrade from Windows 10 S for free

Previously, upgrading from Windows 10 S to 'full version' of Windows 10 will cost you \$ 49. The reason is because Windows 10 S is a lower version of Windows 10 Pro, so upgrading is like paying a license fee for the full Pro version.



More convenient in converting and upgrading OS

Now that it has become S mode, upgrading from S mode Windows 10 Pro to Windows 10 Pro without S mode will still cost \$ 49, but upgrading from Windows 10 Home in S mode to Windows 10 Home will no charge.

1. How to try Windows 10 S for free safely?
2. How to upgrade Windows S operating system to Pro version

Users will no longer have the pressure to upgrade to the full version immediately. The upgrade from Windows 10 S to Windows 10 Pro is only free for a period of time so many people find it necessary to upgrade immediately. But now Windows 10 Home in S mode upgrade to Windows 10 Home is free so there will be no time pressure.

Windows 10 S users will still use Windows 10 S

If you are currently using Windows 10 S then these changes will not affect. You're still running Windows 10 S on your computer, just the OS will be called Windows 10 Pro in S mode, all the benefits of Windows S remain the same.

See more:

1. Windows 10 S can be unlocked by Smartphone
2. Windows 10 S "worth buying"?
3. Microsoft launches Windows 10 S "massive" investment for education

You finished reading the article "**Microsoft's decision to turn Windows 10 S into a mode instead of an ordinary OS version**" edited by the [TipsMake](#) team. We hope this article has provided you with many useful tech tips and tricks. You can search for similar articles on tips and guides. Thank you for reading and for following us regularly.