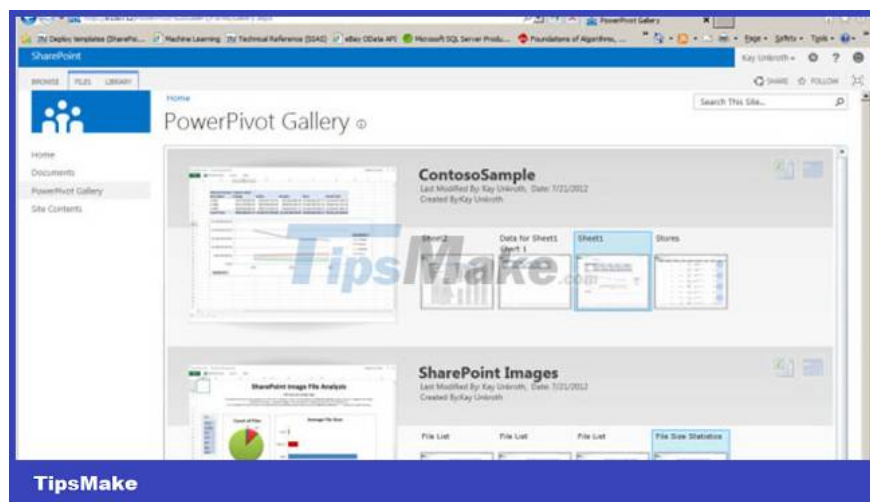


# Microsoft SharePoint Server 2013 officially ends support, users note

Back 10 years ago, SharePoint Server 2013 arrived with a host of improvements and new features, giving users additional ways to share their work, collaborate with others, organize projects and groups, as well as sharing information.

However, more than a decade on, now is the right time for the Redmond company to announce the end of support for this version of SharePoint Server.

Accordingly, in the latest Patch Tuesday update, the support package for SharePoint Server 2013 will officially end. Microsoft's support page says the company won't be releasing any more SharePoint Server 2013 updates after April 11, 2023. That includes support for the installed version of Service Pack 1.



SharePoint Server 2013 officially launched on January 9, 2013. One of the notable features introduced in this update was the ability to support OneDrive for Business (then known as SkyDrive Pro) for saving file storage in the cloud. Comes with that is drag and drop file upload feature on browsers.

After 3 and 6 years, Microsoft released SharePoint Server 2016 and 2019 respectively with many changes and improvements. According to the plan, the SharePoint Server 2016 version will be officially deprecated on July 14, 2026, that is, after about 10 years and 6 months of maintaining support. Similarly, the 2019 version will also end major support on January 9, 2024, before being officially discontinued by Microsoft on July 14, 2026. Currently, the latest version of the collaboration tool. This is SharePoint Server Subscription Edition (SE), to be released as a public preview in 2021.

You finished reading the article "**Microsoft SharePoint Server 2013 officially ends support, users note**" edited by the [TipsMake](#) team. We hope this article has provided you with many useful tech tips and tricks. You can search for similar articles on tips and guides. Thank you for reading and for following us regularly.

