

# Microsoft Finally Develops 'Portable Mode' for Windows Terminal

Microsoft released Windows Terminal in 2020, which brings together all of Windows' command-line shells into one flexible, customizable application platform.

The idea here is to create an open source command line application that allows users to open multiple console tabs in the same window. Each of these tabs can be a different shell, such as Windows command prompt, PowerShell, Linux shells installed in WSL, or other user-installed custom shells.

Back almost three years ago, Amit Hegde, a senior software engineer at Microsoft, proposed the idea of ?? creating a 'portable' version of the Windows Terminal that would make copying and pasting easier should be easier. Talk item #1386 has been opened on the Windows Terminal GitHub page dedicated to this issue.

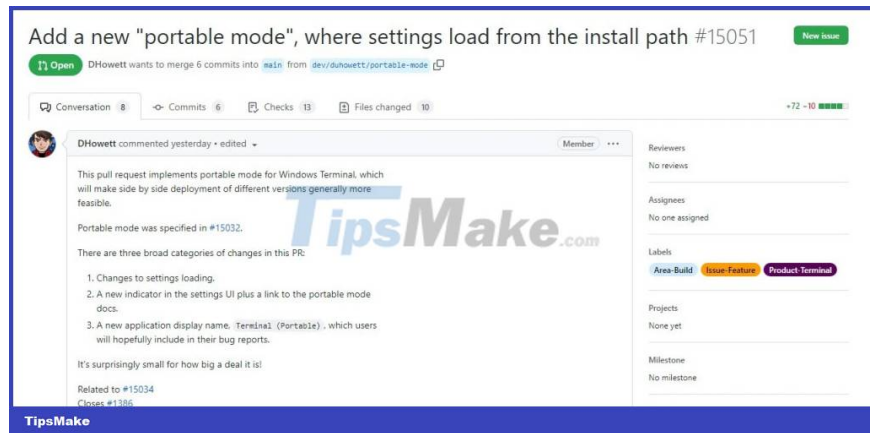
Hegde's idea immediately became a hot topic, attracting a lot of attention and support from the Windows user community. After nearly three years, it seems that this idea has finally been taken care of and planned by Microsoft. As discovered by tech blogger Xeno, a new pull request (#15051) related to the "portable mode" of Windows Terminal has been issued by software engineer Dustin L. Howett.

This pull request involves a portable mode for Windows Terminal, developed to make it possible to parallel deployment of different versions of Terminal in general.

Cellular mode was specified in #15032.

There are three major areas of change in this pull request:

1. Change settings.
2. A new indicator in the settings UI with a link to mobile mode.
3. New application display name, Windows Terminal (Portable).



Notably, a new documentation page for Windows Terminal Portable has also appeared on Microsoft's website. While the page doesn't contain any information for now as the feature hasn't been made public, it's probably only a matter of time.

TipsMake.com will continuously update this article as new information becomes available. Please keep an eye on it!

You finished reading the article "**Microsoft Finally Develops 'Portable Mode' for Windows Terminal**" edited by the [TipsMake](#) team. We hope this article has provided you with many useful tech tips and tricks. You can search for similar articles on tips and guides. Thank you for reading and for following us regularly.