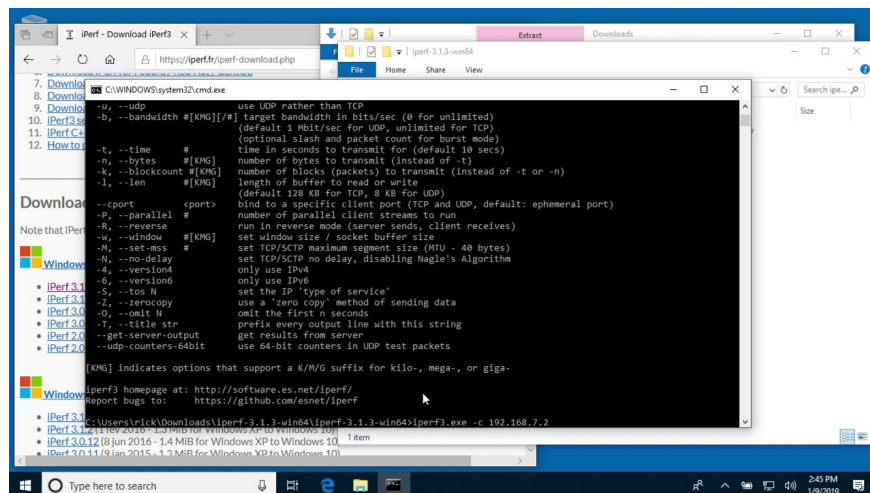


Microsoft cites three reasons not to use the iPerf3 tool on Windows

iPerf is a free command-line tool, developed to allow users to measure the transmission speed and maximum network data that a server is capable of transmitting.

Microsoft just published a well-received post on the Tech Community forum detailing three reasons why Windows users should not use iPerf3, a popular tool for testing and measuring performance. network developed by ESnet. Instead of iPerf3, Microsoft recommends using ntttcp and ctsTraffic. This is the view that the Redmond company offers

First of all, it is necessary to recall that iPerf is a free tool in command line form, developed to allow users to measure connection speed, maximum network data that a server is capable of transmitting, as well as adjust UDP related specifications. iPerf helps system administrators easily control connections from server and client simultaneously. This eliminates the need to set the program to run based on data transfer limits. iPerf allows setting up programs to run based on different and clearly defined time periods.



As useful as it is, Microsoft recommends that users not use iPerf3 on Windows. The first reason is that iPerf3 is not officially supported on Microsoft operating systems. The developer himself said that to date, only iPerf2 version is officially supported on Windows, while iPerf3 is not yet. Additionally, the main development of this tool takes place on CentOS 7 Linux, FreeBSD 11, and macOS 10.12, not Windows.

The second reason is that although iPerf3 works on Windows, the utility does not make native API calls. It is emulated on Windows through the Cygwin emulation layer. Microsoft says iPerf3's developers "have done a great job bringing smooth performance to the tool," but there are still some problems with their approach. Besides not providing In certain capabilities for network testing, simulation operations also introduce additional latency, resulting in lower than expected throughput.

Finally, Microsoft has now removed outdated iPerf3 versions from appearing at the top of search results. Version 3.1.3 is the version downloaded by most users, and that release is now nearly 8 years old. In addition to lacking bug fixes and new features, version 3.1.3 also contains a vulnerability in cygwin1.dll that causes the socket buffer to be limited to 1MB. This leads to inaccurate testing on high-speed networks.

For all the above reasons, Microsoft wants customers to use Windows NT Test TCP (ntttcp) and ctsTraffic or for iPerf3. These are two native tools that use the Windows network in the same way that native Windows applications work. Windows NT Test TCP allows testing of native Windows-Windows and Windows-Linux network APIs, while ctsTraffic is only for Windows-to-Windows standards.

You finished reading the article "**Microsoft cites three reasons not to use the iPerf3 tool on Windows**" edited by the [TipsMake](#) team. We hope this article has provided you with many useful tech tips and tricks. You can search for similar articles on tips and guides. Thank you for reading and for following us regularly.