

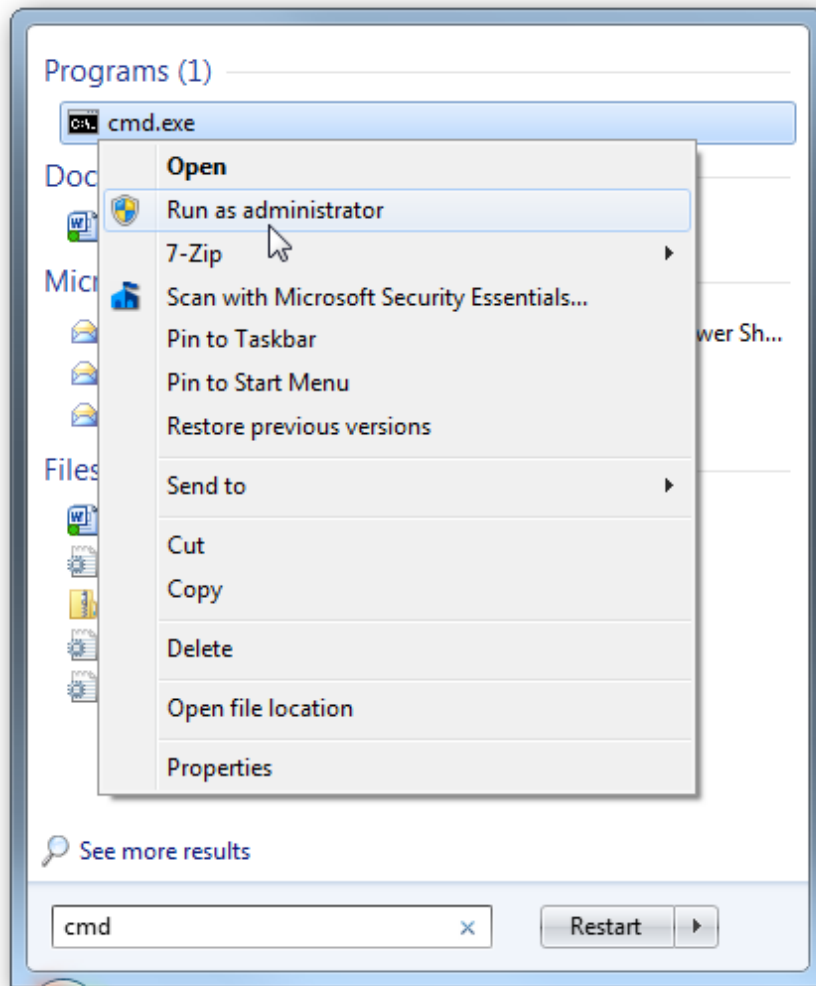
Manage Hibernate Mode in Windows 7

If you do not use Hibernate hibernation in Windows 7, you can save some disk space by disabling it. There are many ways as follows:

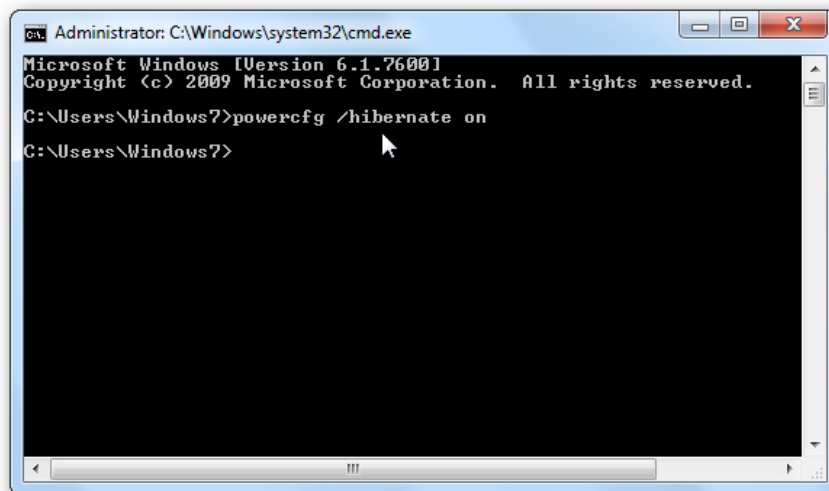
If you do not use **Hibernate hibernation in Windows 7** , you can save some disk space by disabling it. Here we will look at a few different ways to manage the **Hibernate** option in Windows 7.

Enable or disable Hibernate Via Command Prompt

Using the **Command Prompt** is the easiest way to enable or disable hibernation. Click on **Start** and type **CMD** in the search box and it will be listed by program. **Right-click** on the icon and select **Run as administrator** .

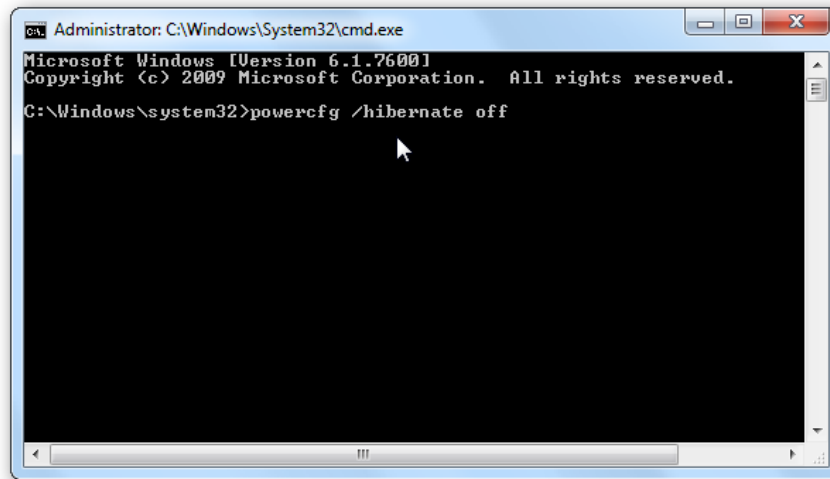


The **Command Prompt** opens and you will use the following to enable **Hibernation** .
powercfg / hibernate on



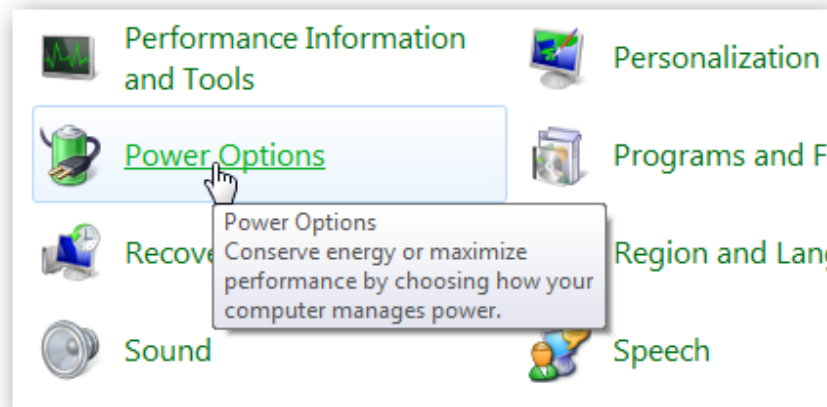
Type the following to disable hibernation.

powercfg / hibernate off

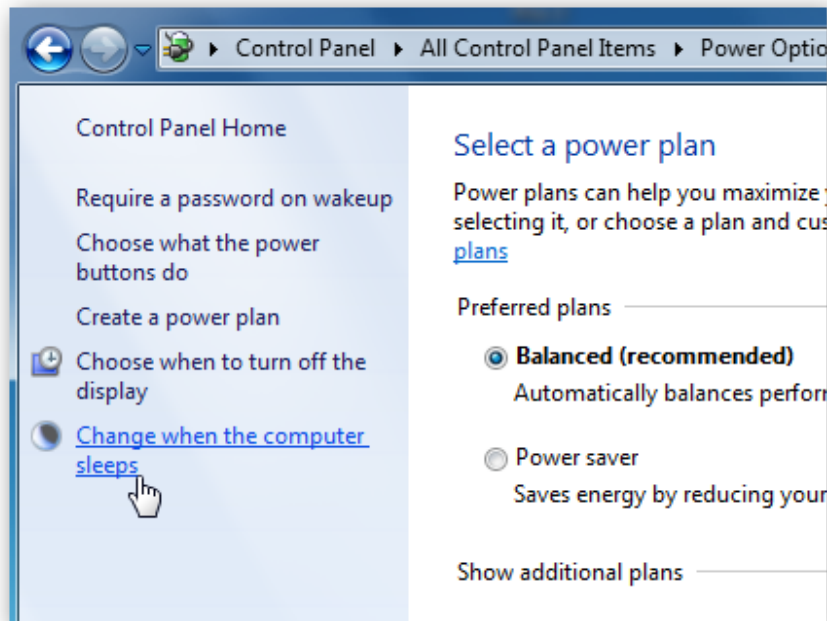


Managing Hibernation Through the Control Panel

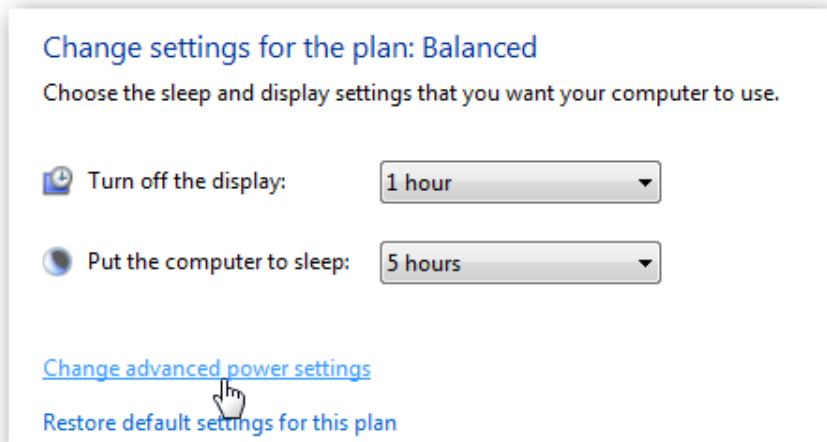
Click on Start and open **Control Panel** then click on **Power Options** .



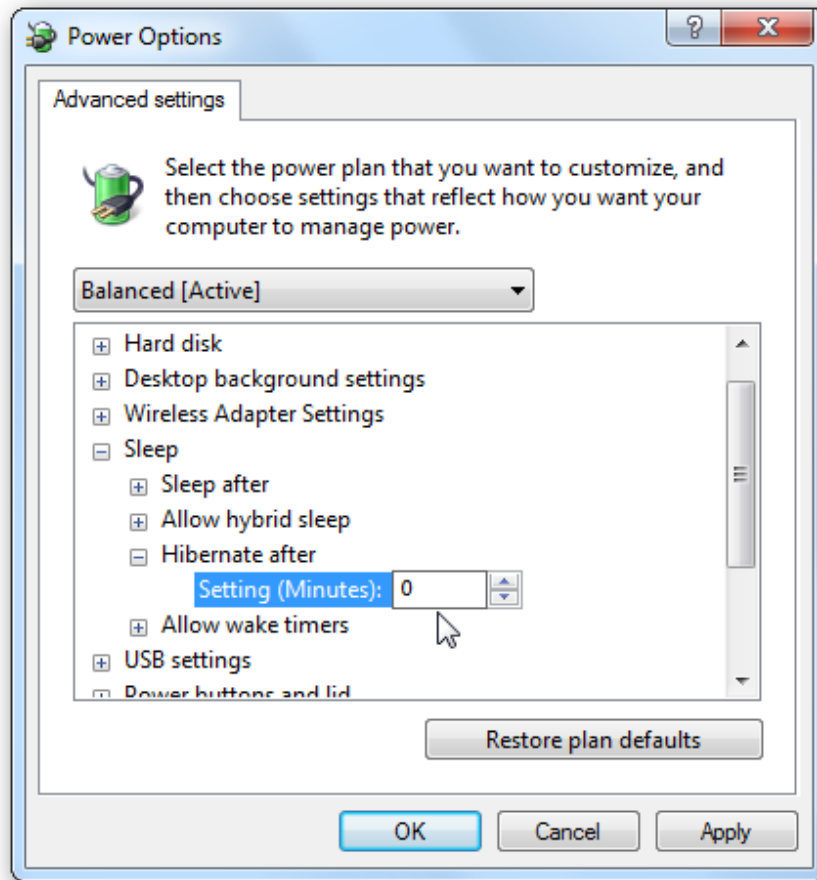
On the left, click **Change when the computer sleeps**.



Now click **Change advanced power settings**.



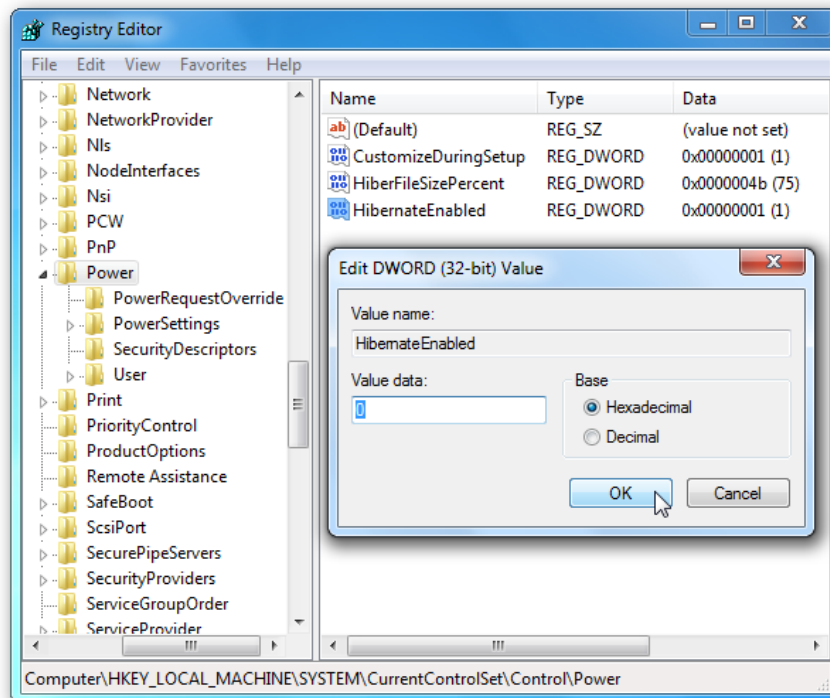
In the **Advanced Power Options** window expand the **Sleep** section then you will see the *Hibernate after* section and **change the minute to 0** to turn it off. Or you can specify the number of minutes you want to pass before it goes into hibernation. After you have made your selection click on **Apply** and **Ok** then close out of the remaining screens.



Disable Hibernate Through Regedit

***Note :** Changing the registry value can cause your computer to become unstable or stop working and is only recommended for experienced users.*

Now that the recommendation is on the go . you may want to disable Hibernate mode completely through a registry fix. **Open the Registry** and navigate to **HKEY_LOCAL_MACHINE SYSTEM CurrentControlSet Control Power** and change both **HiberFileSizePercent** and **HibernateEnabled** to **zero value** data. After you have made the changes exit the Registry Editor and restart the computer.



If you always turn off your computer or never do it, you can turn off Hibernation mode to gain some hard disk space. On Windows 7 (32-bit) our machine with a 300GB hard drive, disabling hibernation gets us just over 3 GB of more disk space. That may not sound like a lot of high-capacity drives today, but if you **don't need Hibernation** , why not reclaim that space?

You finished reading the article "**Manage Hibernation Mode in Windows 7**" edited by the [TipsMake](#) team. We hope this article has provided you with many useful tech tips and tricks. You can search for similar articles on tips and guides. Thank you for reading and for following us regularly.