

Making Linux look like macOS with these easy tweaks!

You can learn the simple steps needed to make the Linux desktop work and look like Apple's macOS.

If you love Linux but love Mac aesthetics, the good news is that you can combine these two elements together! You can learn the simple steps needed to make the Linux desktop work and look like Apple's macOS.

Redesigning Linux to resemble macOS is very simple. After all, the Macintosh desktop has two defining features: Application bar and menu bar. This tutorial will try to 'imitate' them on Linux, along with a number of other factors.

Bring the macOS appearance to Linux with the following tweaks

1. How to make Linux look like macOS
 1. Basic theme
 2. Theme icon
 3. Dock Plank
2. Refine GNOME to make Ubuntu look like a Mac
 1. Dock
 2. Change theme
3. Adjust Xfce to look like macOS
4. Making KDE Plasma looks like macOS
 1. Plasma menu bar
 2. Launch automatic plank
 3. Adjust the interface
5. Linux Mint's way of making Cinnamon looks like a Mac
 1. Automatically launch Plank
 2. Adjust the theme for Cinnamon
6. Make Unity on the old Ubuntu system look like macOS
 1. Final edits
7. Where is the best way to make Linux look like macOS?
 1. GNOME
 2. Xfce
 3. Plasma
 4. Cinnamon
 5. Unity

How to make Linux look like macOS

Making Linux similar to macOS desktop is quite simple. However, that depends on the desktop environment you use. In this tutorial, we will look at how to create a Mac-like interface on Linux, using 5 desktop environments:

1. Gnome
2. Xfce
3. KDE Plasma
4. Linux Mint's Desktop Cinnamon
5. Unity

However, before you start, you need three things to make Linux look like macOS: the theme, the dock bar and the appropriate icons.

Basic theme

Before doing anything else, if you want your desktop to look like a Mac, you'll need to install the appropriate theme. A Linux theme called macOS Sierra does exactly that. To download, open a terminal and enter:

```
mkdir $HOME/.themes
```

You may already have the **/.theme/** folder (you'll know if the terminal says there is an error). If that is the case, ignore this command. Next, enter:

```
cd $HOME /.theme wget https://github.com/B00merang-Project/macOS-Sierra/archive/
```

If you don't have **wget**, just copy the link to the browser and download it manually. Be sure to put it in **/.theme/** !

Finally, enter the command:

```
unzip master.zip
```

Then, you will be able to choose a theme from the distro interface's tweaking tool.

Theme icon

Gnome Yosemite theme icon is very similar to macOS's appearance. Like application themes, the way of adjusting is not the same between desktops. The terminal commands below only focus on installing it:

```
sudo add-apt-repository ppa:numix/ppa && sudo apt-get update sudo apt install numix
```

(Note that if you use a recent Debian-based distribution, you may need to install **software-properties-common** to activate the **add-apt-repository** command).

This theme is based on Numix Circle theme icon. This theme does not work completely as intended, so you will need to fix this:

```
sudo sh -c "curl https://raw.githubusercontent.com/Foggalong/hardcode-fixer/master"
```

The second command downloads an automated installation script and sets up GNOME Yosemite as a theme icon. If the commands do not work, make sure you have installed the previous cURL:

```
sudo apt install curl
```

If you are new to cURL, please refer to the article: [How to use cURL in Linux](#) to learn more about this tool.

Dock Plank

In addition to Unity, other instructions will assume that you have Plank. Plank has a taskbar that integrates well with macOS Linux theme. To install it, enter this command:

```
sudo apt install plank
```

Then, launch the dock by pressing **Alt + F2** and entering **plank --preferences**.

Regardless of what desktop you are using, this command will also start Plank, along with its configuration window. In the **Appearance** section, change the **Theme** to **Gtk +**. This will make the dock look like in macOS after you make some adjustments later.



Everything looks pretty good, but you may want to hide that anchor icon. To do this, adjust a hidden setting:

```
gsettings set net.launchpad.plank.dock.settings:/net/launchpad/plank/docks/dock1
```

Now, you have made Linux look like macOS. You will need to make some further adjustments to complete everything.

Refine GNOME to make Ubuntu look like a Mac

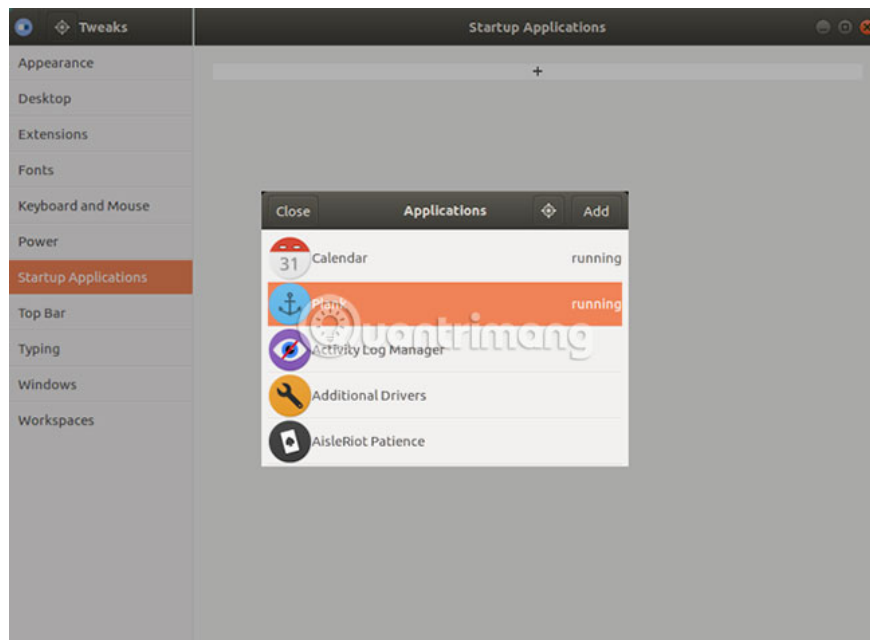
Ubuntu uses the GNOME desktop environment and only needs a few adjustments to bring it to the macOS interface.

Dock

If you follow the instructions at the top of the article, you should now have a dock. However, to continue using it when rebooting, you will need to add it to your startup applications. The easiest way to do this is through **GNOME Tweak Tool** . Install it with the following command:

```
sudo apt install gnome-tweak-tool
```

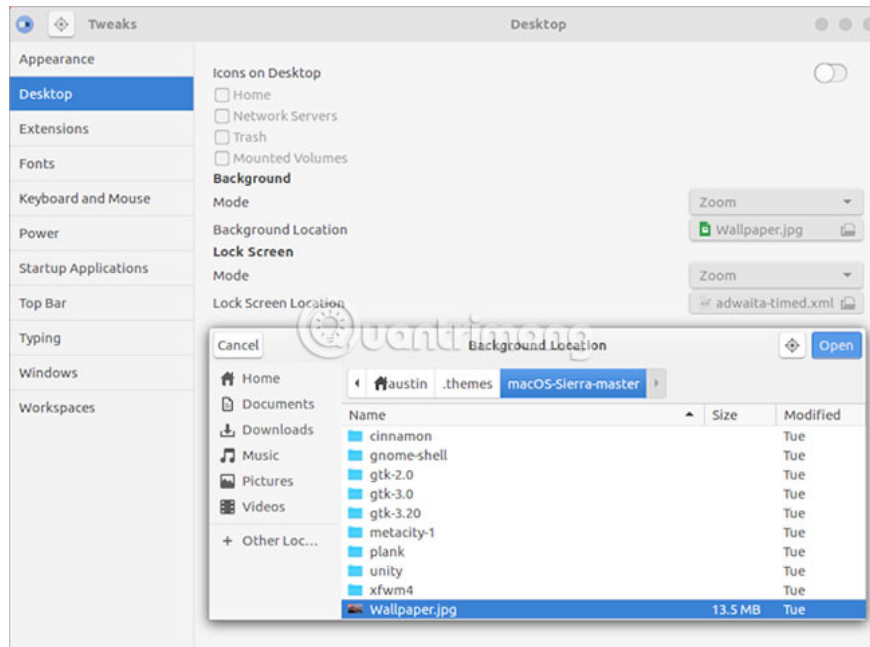
Open the program by typing **gnome-tweak-tool** into the terminal. You can only search for programs in the operation menu. Navigate to the **Startup Application section**. From there, just need to add **Plank**. If it's already running, you don't have to search anymore. It will be right above the head.



Change theme

Inside the **GNOME Tweak Tool** , go to the **Appearance** section . Change **GTK +** theme to **MacOS-Sierra-master**. Both the application window and the Plank dock will change in appearance. Finally, change the wallpaper by going to the **Desktop** section of the **Tweak Tool**. In it, click the **Background Location** button .

You will be presented with a way to choose a new wallpaper. A Mac-like wallpaper is placed with the theme (named **Wallpaper.jpg**), so navigate to its location at **~ / .themes / macOS-Sierra-master**. You may have to display hidden files to view this folder. In that case, right-click on the file select window and select **Show Hidden Files** .



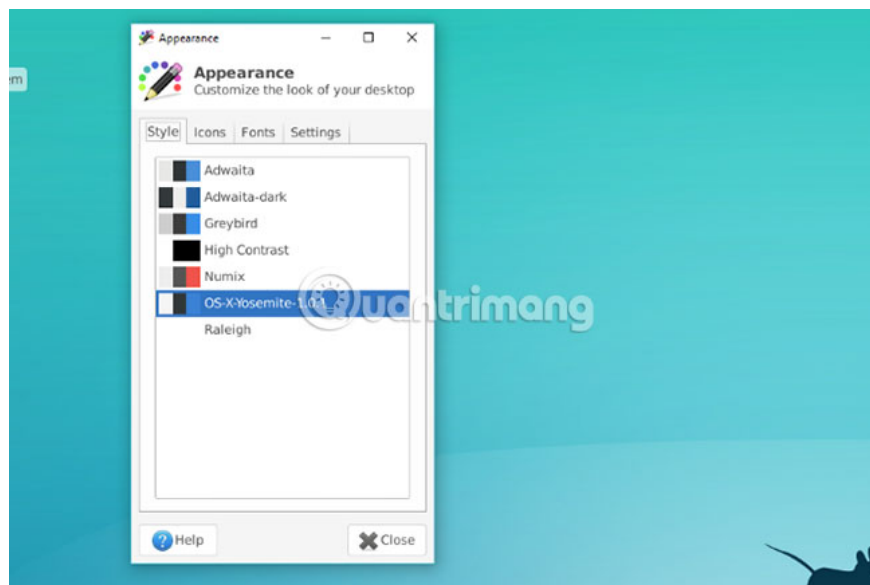
Adjust Xfce to look like macOS

If you use the Xfce desktop environment, you can get the new macOS interface in just a few minutes. Thanks to the Yosemite GTK3 theme, your Linux will be similar to a Mac in just a few simple steps.

As you may know, Xfce is somewhat similar to macOS thanks to a dock.

Start by downloading the Yosemite theme from GitHub.

Next, extract the file to the `/.theme/` folder in **Home**. Open **Settings** > **Appearance** and select **OS-X-Yosemite**.



The new macOS theme for Linux will be applied immediately. Click **OK** to accept.

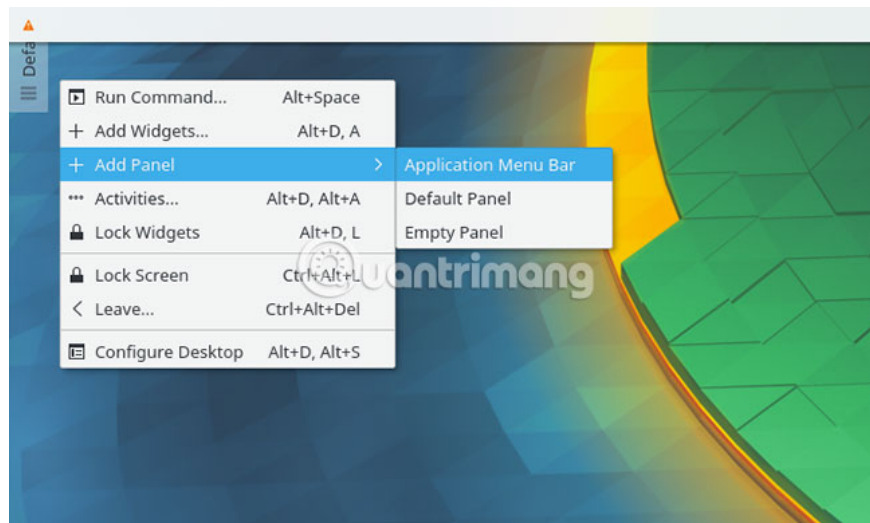
Making KDE Plasma looks like macOS

With the release of Plasma 5.9, you can create a KDE desktop that looks similar to Mac.

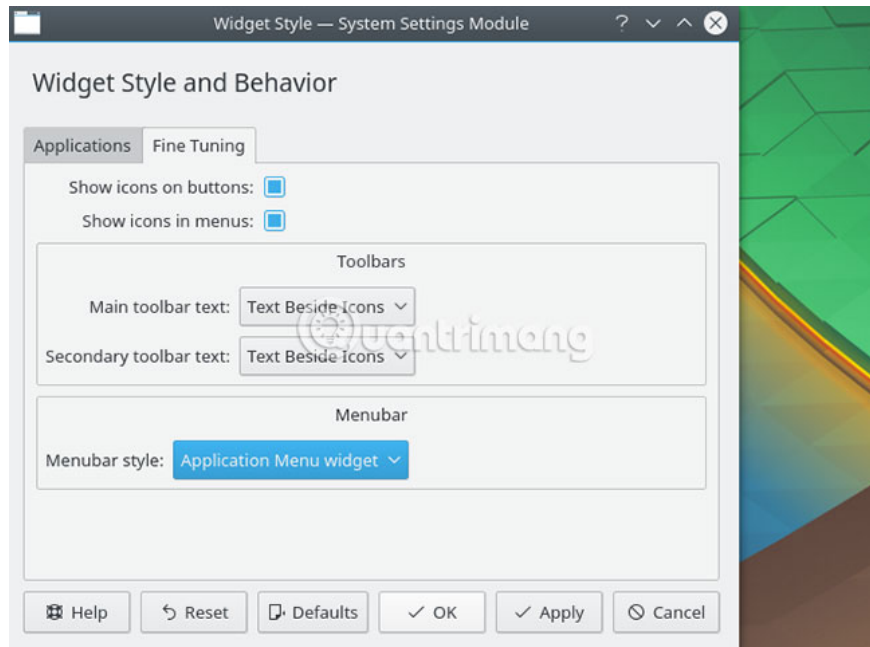
KDE prides itself on its power and flexibility. Therefore, in terms of appearance, KDE may be a bit more like macOS than GNOME. However, some steps will need to be taken.

Plasma menu bar

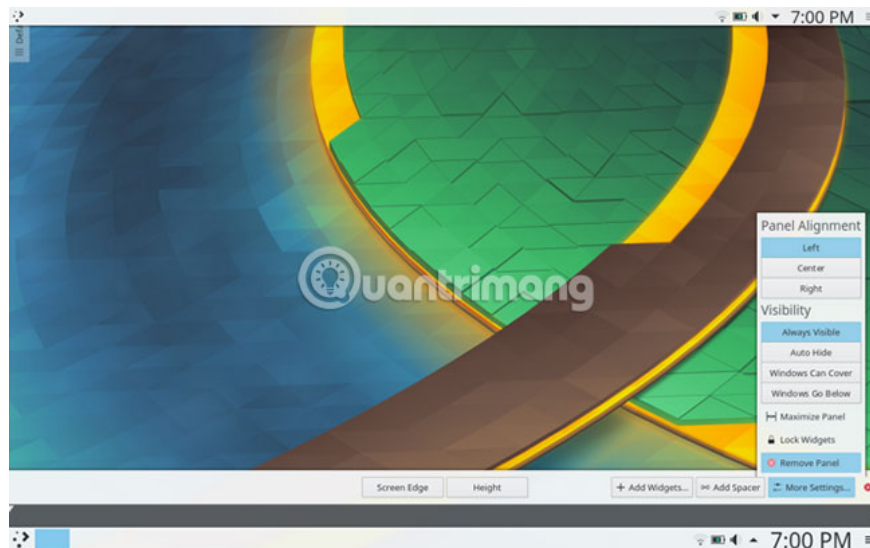
Since Plasma 5.9, you can now have a macOS-like menu. To start, right-click on the desktop and select **Add Panel**> **Application Menu Bar** . You will get a blank panel at the top of the screen. Click on the danger sign inside it. An installation window allows you to change the way the application menu bar is displayed.



Go to **Fine Tuning**> **Menubar style**> **Application Menu widget** . Once you have applied this setting, the danger sign will disappear and the application menu will display on the top.



After completing this, add some suitable widgets to the control panel, by right-clicking on the panel and selecting the **Add Widgets** option . The article recommends using the same widget with the bottom panel. Finally, remove the bottom panel by clicking the hamburger menu and selecting **More Settings> Remove Panel**



Launch automatic plank

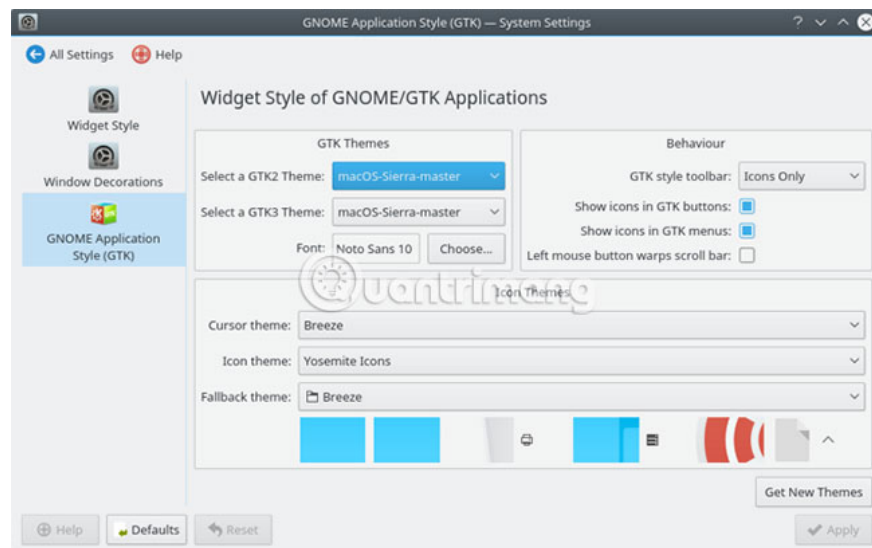
In **System Settings** , go to **Workspace> Startup and Shutdown> Autostart> Add Program** . You will be able to find the **Plank** located in **Utilities**. This helps you not to start the dock manually every time you log into the desktop.

Adjust the interface

Interestingly, Plasma puts its theme icon in another location. Because of this, you will need to move your macOS theme icon folder away. Use terminal commands to do this:

```
cd $HOME/.icons cp -r GnomeYosemiteIcons-master/ ../local/share/icons
```

Now, when you open your system installation and go to **Appearance**> **Icons** and choose the **Yosemite Icons** theme icon.



Complete this, go back to the settings menu and go to **Appearance**> **Application Style**> **GNOME Application Style** . In **GTK Themes**, select **macOS-Sierra-master**. After that, change the theme icon to **Yosemite Icons**.

After that, go to **Window Decorations** and select the **Get New Decorations** option . Search for a theme named **Brezemite** and install it. Set it as a decorative theme.

Finally, to hide the toolbox at the corner of the screen, click it and select **Configure Desktop**. In the **Tweaks** menu that appears, disable the **Show the desktop toolbox** option .

Linux Mint's way of making Cinnamon looks like a Mac

Without any modification, Cinnamon desktop looks more like Windows than macOS. Fortunately, it's easy to change Cinnamon desktop.

Move the bottom panel up, by right-clicking on it, then moving to **Modify panel**> **Move panel** . This will make Cinnamon desktop look a bit more Mac-like. Then, delete the icons on the screen in the control panel, by right-clicking on them and selecting the **Remove** option .



You can also delete the window list applet, by right-clicking on it, selecting **Configure the window list** , then clicking the **Remove** button .

Automatically launch Plank

If you followed the steps at the top of the article, Plank will work on your desktop. However, it does not appear on the screen after rebooting. To fix this, open the **Startup Application** menu in the installation manager. From there, find **Plank** in the list of applications (they are sorted alphabetically).

Now, when restarting the desktop session, you will not have to launch the dock manually.

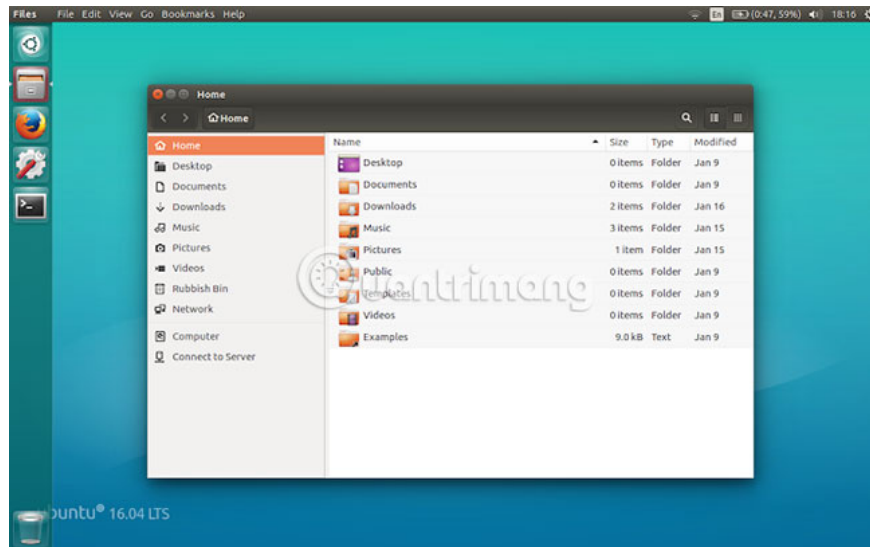
Adjust the theme for Cinnamon

Desktop Cinnamon needs a bit more adjustment than other desktops. Open **System Settings > Appearance > Themes** . You will see several theme options. Change everything except **Icons** and **Mouse Pointer** to **macOS-Sierra-master**. Then, change the **Icons** section to use **GnomeYosemiteIcons-master**.

When doing these final tasks, you can change your wallpaper to something more Mac-like. Open the **Backgrounds** settings , then add the `~/.themes/macOS-Sierra-master` folder as the new background folder. You may have to display hidden folders to view it.

Make Unity on the old Ubuntu system look like macOS

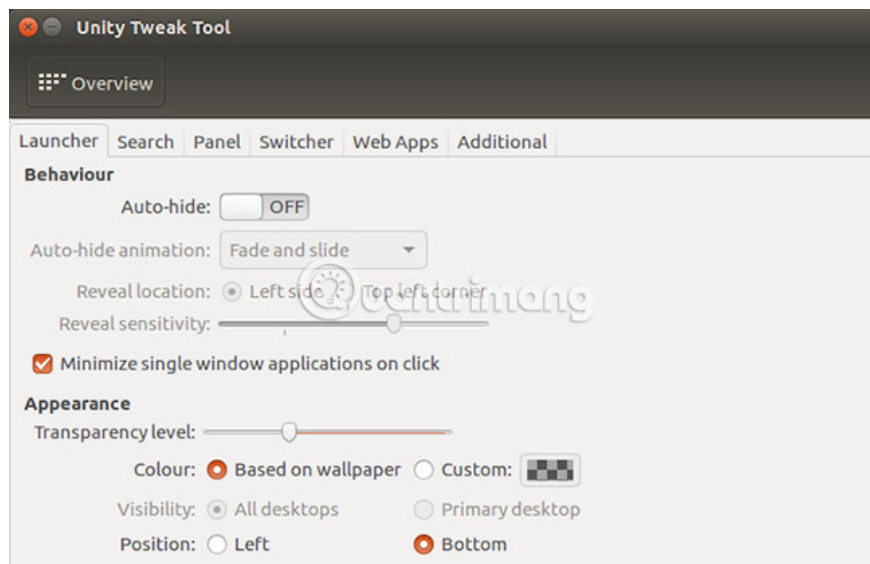
Desktop Unity is found on older versions of Ubuntu. Because Unity has some sharpness with macOS, it's easy to adjust.



As you can see, Unity has a dock and menu bar by default. All you need to do is make some visual adjustments. This can be easily achieved using **Unity Tweak Tool** , which allows you to change some hidden desktop options. Install it with this terminal command:

```
sudo apt install unity-tweak-tool
```

After installing it, open the tool by searching for it in the Unity menu. Then go to **Launcher > Appearance > Position** . You will see that the application dock has two positions that can be changed: One on the left (by default) and one on the bottom (like macOS). You need to select **Bottom** position .



Final edits

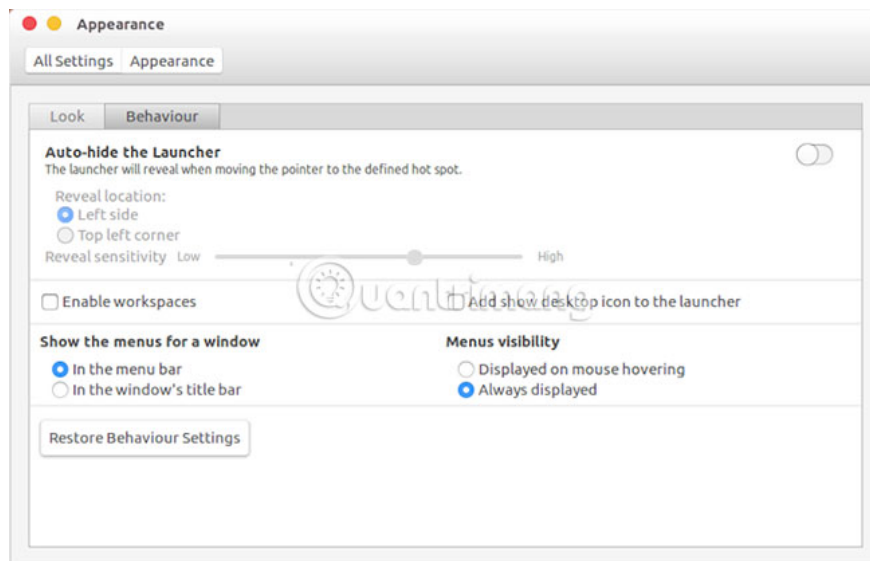
In **Unity Tweak Tool** , go back to the **Overview** menu . From there, find **Appearance > Theme** and choose **Macos-sierra-master**. Your applications will now feel very similar to Mac.

Theme also comes with a very beautiful wallpaper. To access it, first press **Ctrl + L** in the file manager. This allows you to get to the location:

```
/home/USER/.theme/macOS-Sierra-master/
```

Find the image named **Wallpaper.jpg**, right-click and select the **Set as Wallpaper** option .

By default, the Unity menu bar only displays options when you hover over it. To make this menu work like macOS, open **System Settings** , then go to **Personal**> **Appearance**> **Behavior**> **Menu visibility** . Select the option **Always display** below.



Where is the best way to make Linux look like macOS?

As you can see, with any desktop, you can tweak it so that it is similar to the macOS desktop.

GNOME



Here, everything looks good, although the menu bar is a bit different.



It can be said that Cinnamon desktop brings the most similar feeling to macOS.

Unity

The color and arrangement of the dock shows the fact that Unity is not really macOS. Using Plank is not a popular option, as it will make the launch of the program too difficult.



Linux is extremely flexible. If you are not satisfied with what you see, you have the right to change them. Whether you make your own edits, or install other themes, icon packs, and add-ons, it all depends on you.

However, if you want the easiest option to make Linux look like a Mac, you should use the Xfce desktop.

Some Linux distributions are even designed to look like macOS. If you don't want to spend your favorite time configuring a new interface for Linux, why not consider elementaryOS?

You are successful!

You finished reading the article "**Making Linux look like macOS with these easy tweaks!**" edited by the [TipsMake](#) team. We hope this article has provided you with many useful tech tips and tricks. You can search for

similar articles on tips and guides. Thank you for reading and for following us regularly.
