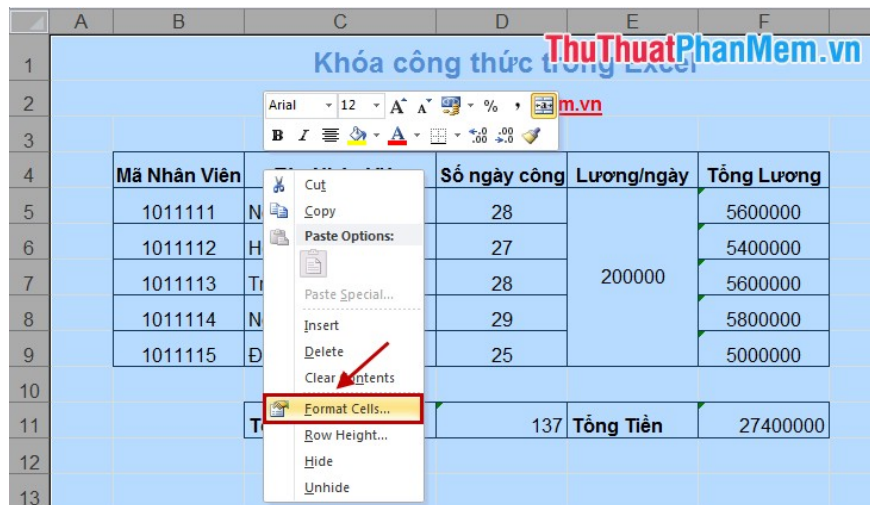


Lock cells with formulas in Excel - Lock and protect cells containing formulas in Excel

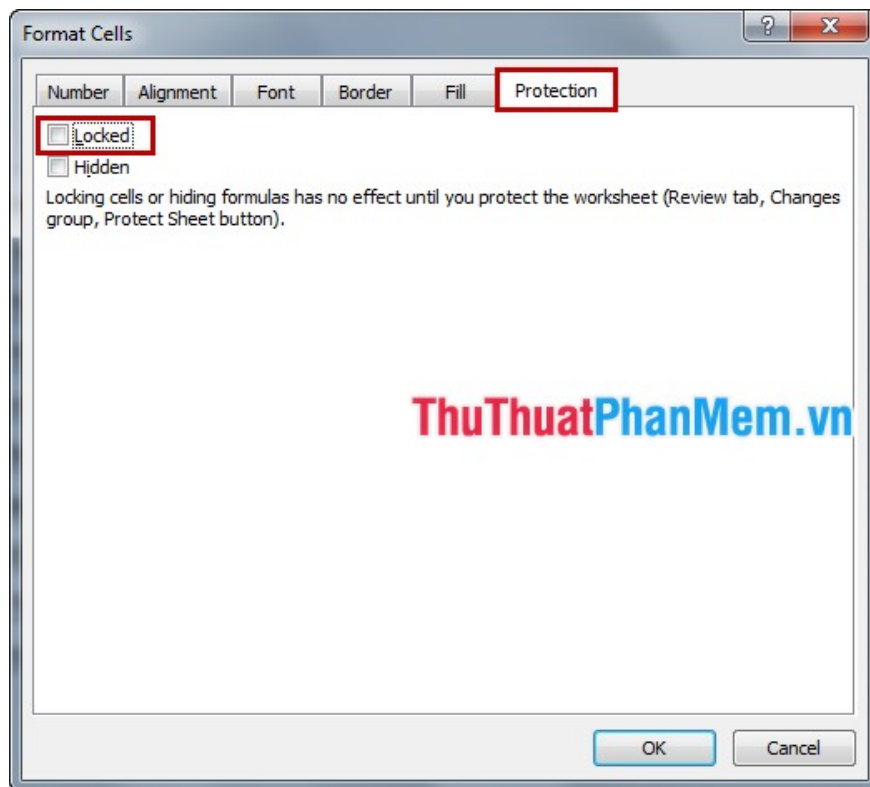
When sharing Excel files with others, you don't want to be edited by other formulas. The following article will help you know how to lock formulas in Excel.

Use Excel to process and calculate data to help you work more efficiently. But when sharing data with others, you don't want to be edited by other formulas. The following article will help you know how to lock formulas in Excel, you track it!

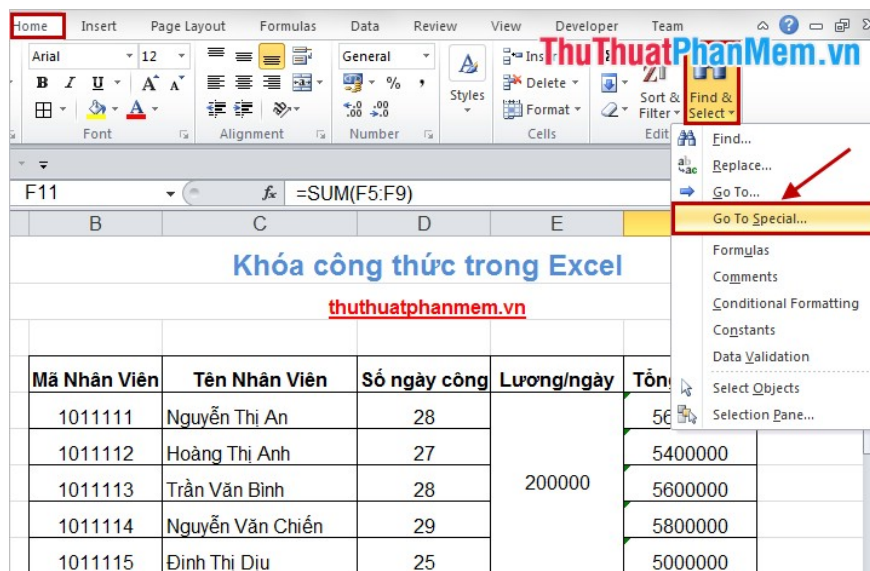
Step 1: Open the sheet containing the formula to lock, select all the sheets with **Ctrl + A** key combination . Then right-click and choose **Format Cells** .



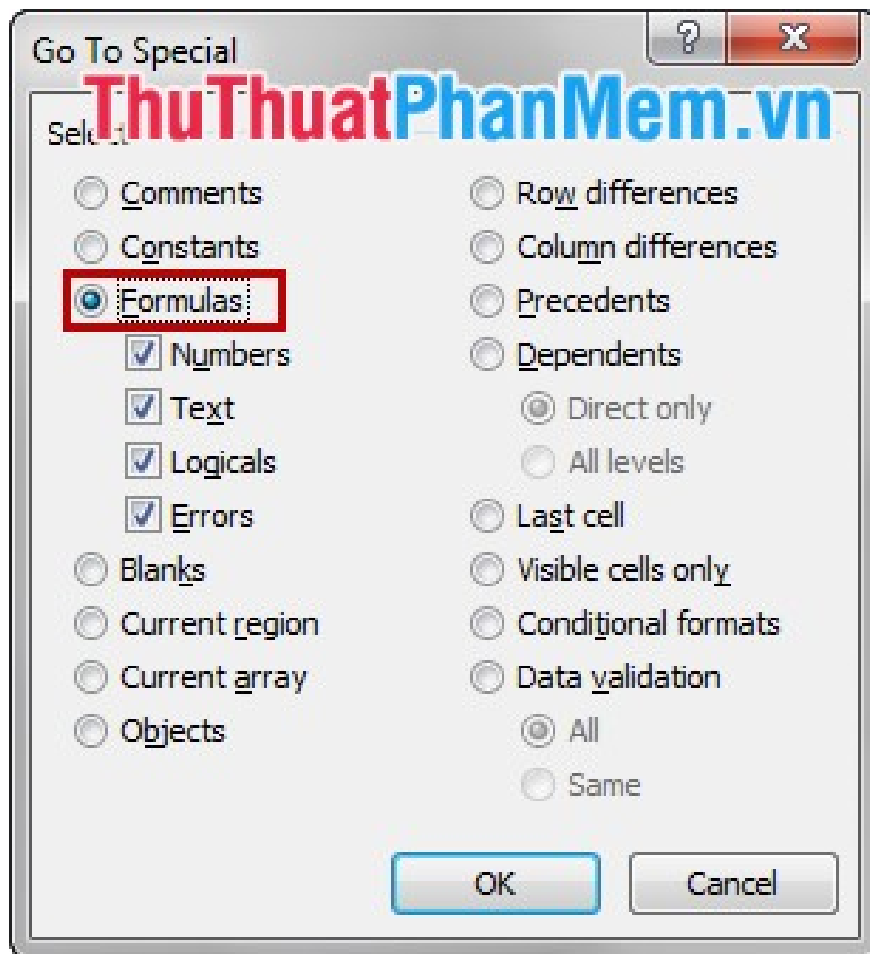
In the **Format Cells** dialog box, click the **Protection** tab , deselect the **Locked** item, and click **OK** .



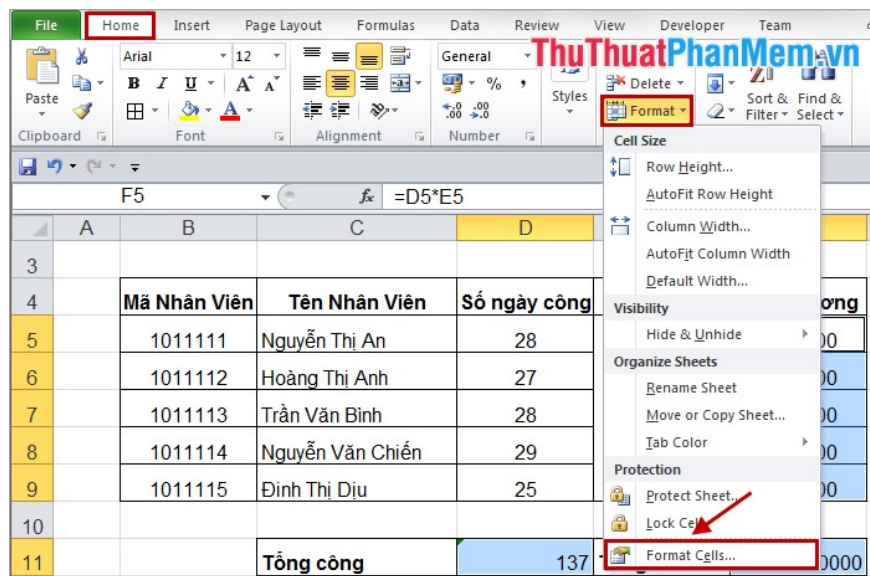
Step 2: You can press **Ctrl** and manually select the cells containing the formula to lock, or if you want to select all the cells containing the formula in the sheet, then select **Home -> Find & Select -> Go to Special** (or **Ctrl + G** and select **Special**).



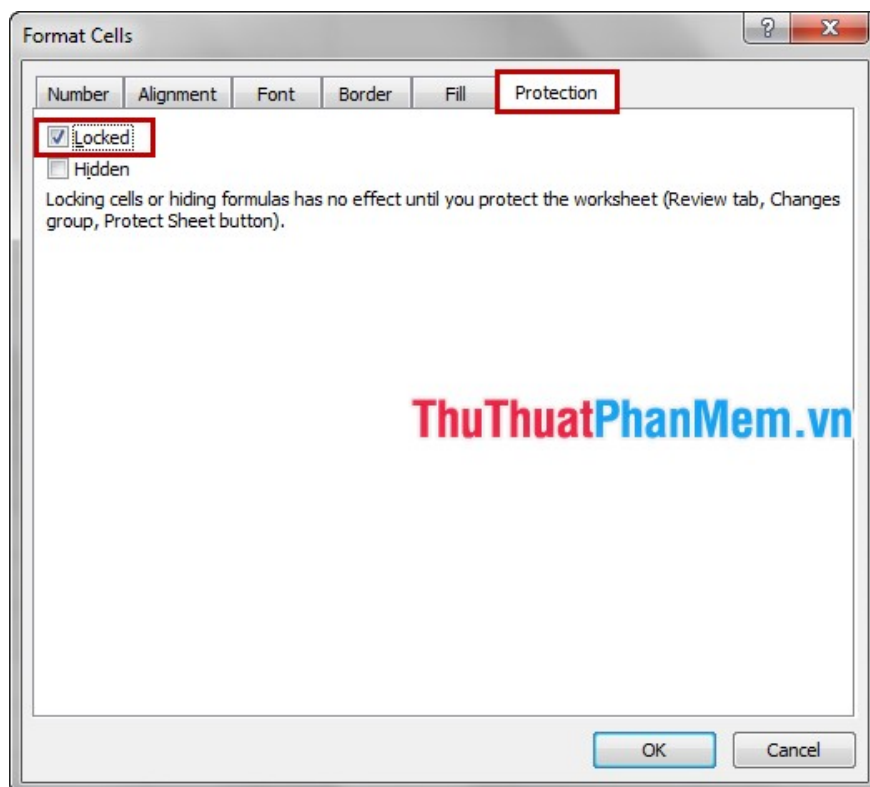
In the dialog box **Go To Special** you select **Formulas** and click **OK** .



Step 3 : After clicking **OK** , all the cells containing the formula in Sheet are selected, you just need to click **Home -> Format -> Format Cells** .



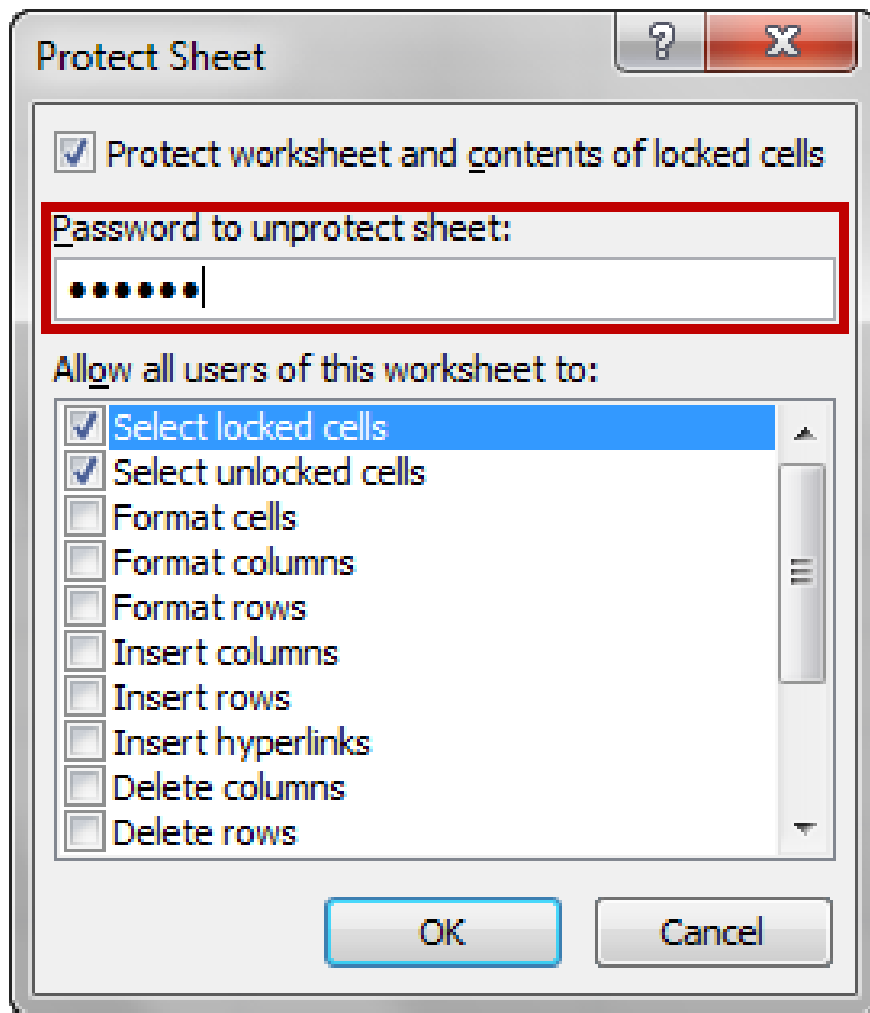
In the **Protection** tab, click **Locked** to lock and click **OK** . If you want to hide the formula, click on **Hidden** .



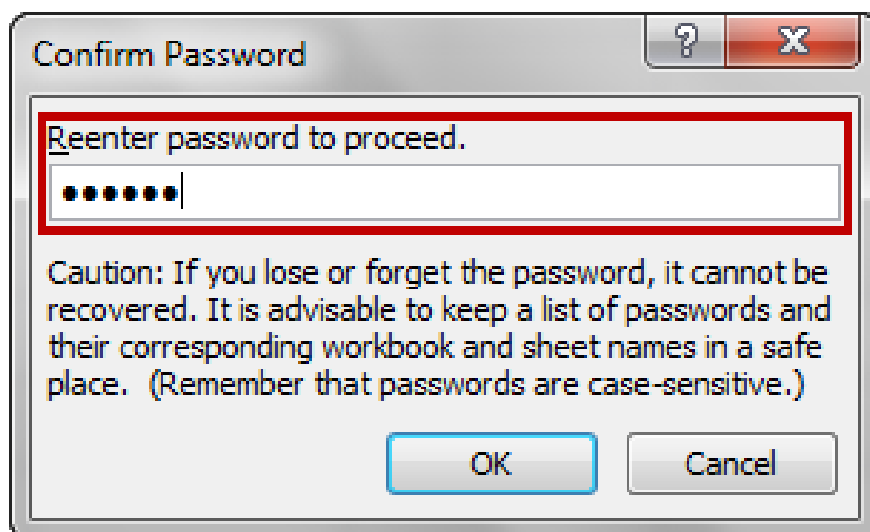
Step 4: Select **Review** -> **Protect Sheet** (or **Home** -> **Format** -> **Protect Sheet**) to open the password setting dialog.

	A	B	C	D	E	F
3						
4		Mã Nhân Viên	Tên Nhân Viên	Số ngày công	Lương/ngày	Tổng Lương
5		1011111	Nguyễn Thị An	28	200000	5600000
6		1011112	Hoàng Thị Anh	27		5400000
7		1011113	Trần Văn Bình	28		5600000
8		1011114	Nguyễn Văn Chiến	29		5800000
9		1011115	Đinh Thị Dịu	25		5000000
10						
11			Tổng công	137	Tổng Tiền	27400000
12						

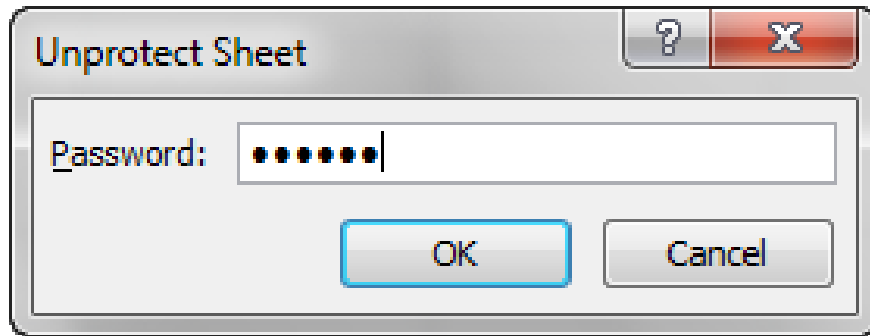
The **Protect Sheet** dialog box appears, enter the password in the *Password to unprotect sheet* and click **OK** .



Confirm the password and click **OK**.



So you locked the formulas in the sheet, to unlock you go to **Review -> Unprotect Sheet** (or **Home -> Format -> Unprotect Sheet**) then enter the password into the Unprotect Sheet dialog and click **OK** to Unlock recipe.



The article on detailed instructions on how to lock formulas in Excel, you just need to follow the steps to lock the formula as you like. Good luck!

You finished reading the article "**Lock cells with formulas in Excel - Lock and protect cells containing formulas in Excel**" edited by the [TipsMake](#) team. We hope this article has provided you with many useful tech tips and tricks. You can search for similar articles on tips and guides. Thank you for reading and for following us regularly.