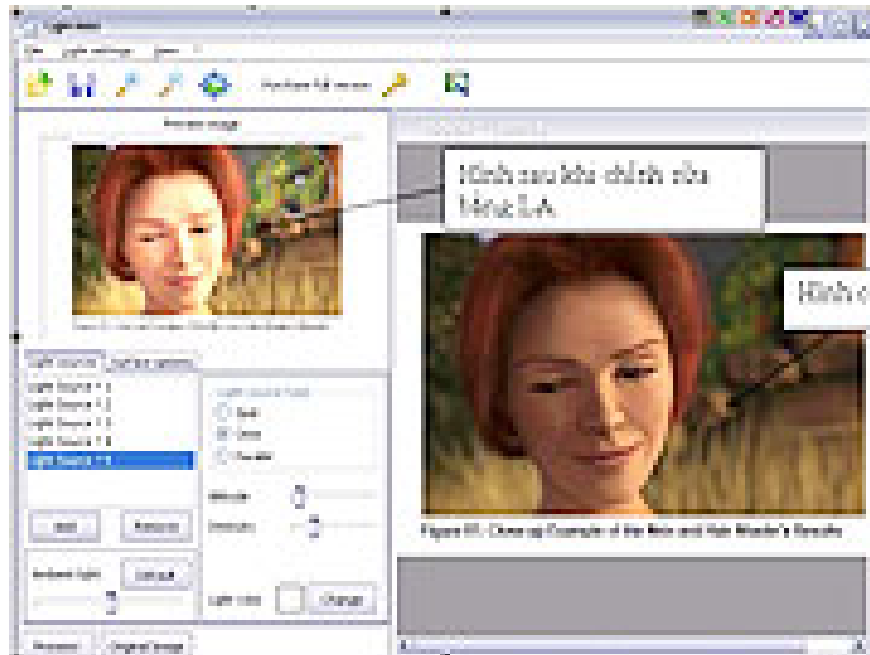


Light artist - artist that adjusts sharpness for images

Light artist is a program that helps you get sharper images by creating light effects for photos with the same sharp balance from source images.



Light artist is a program that helps you get sharper images by creating light effects for photos with the same sharp balance from source images.

By creating many strange, beautiful lighting effects, it also balances the brightness of the image, the spread of bright areas, 3D images . to make your photos more vivid and beautiful. More eyes.

The program can be downloaded at <http://www.vicman.net/lightartist>.

Capacity 2847 KB, Compatible with all windows.

To do this, load the image into the ready position. In the Light Setting section, you select an effect to use. Next in the Light sources section, select add. Then adjust the area to be balanced. Click Add. Review the photo. If you like it, then you can add it again until you like it. In the Light Source Type section you give three types of adjustment from spot to state (ommi) and parallel (palatel). Alternatively, you can adjust the light area around the image by dragging the slider in the Ambient Light section. Increase or decrease intensity in altitude and intensity sections. Also, in the light color section, you can animate the background color for the toolbar. If you want to adjust it further, you can directly adjust the slider parameters such as diffuse, color reflection (specular) . in the Surface Options tab.

After having a photo like that, you click Process to complete the work for your photo. Look, they look great.

Pham Le Minh Dinh

You finished reading the article "**Light artist - artist that adjusts sharpness for images**" edited by the [TipsMake](#) team. We hope this article has provided you with many useful tech tips and tricks. You can search for similar articles on tips and guides. Thank you for reading and for following us regularly.