

Learn how to make Excel formulas automatically jump when entering data into the next line

Hello! Going around the forums, there are many people looking for the trick 'Excel formula automatically jumps when entering data into the next line'.

Hello! Going around the forums today, there are many people looking for the trick 'Excel formula automatically jumps when entering data into the next line'. TipsMake searched and revealed detailed instructions in the article. Follow now!

Whether you are new to Excel or have been working with this tool for a long time. It is certainly not uncommon for Excel to have errors or some operations that are not clearly understood. Currently, many office workers are interested and looking for ways to make **Excel formulas automatically jump when entering data into the next line** . Because the situation of Excel formulas not jumping automatically is very common. **TipsMake** has researched and has suggestions to help you in today's **tips section** .





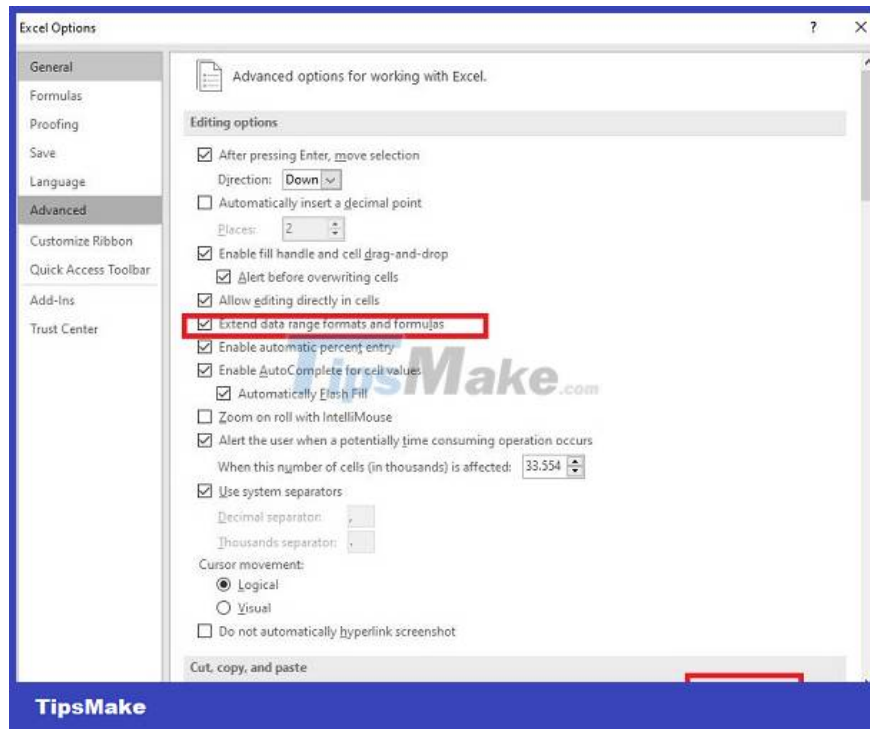
Step-by-step instructions on how to make Excel formulas automatically jump when entering data into the next line super quickly

How to make Excel automatically jump to the formula when entering data on a new line is searched by many people working with this tool. Because sometimes, having to re-enter the formula on newly added lines is quite troublesome. Even countless people are worried about forgetting something or mistakenly entering another formula that will produce a different result on the new line. If this is also your problem, the tips below will help you not worry anymore.

Share how to make Excel formulas jump automatically when entering data on a new line

To make Excel automatically jump to the formula when entering data in a new line, perform the following steps:

1. **Step 1** : Click the **File** tab in the open Excel document > Select **Options** in the list of options on the left.
2. **Step 2** : Continue, when the new window displays, click **Advanced** in the menu on the left of this window.
3. **Step 3** : Tick the line **Extend data range formats and formulas** > Click **OK** to complete this process.

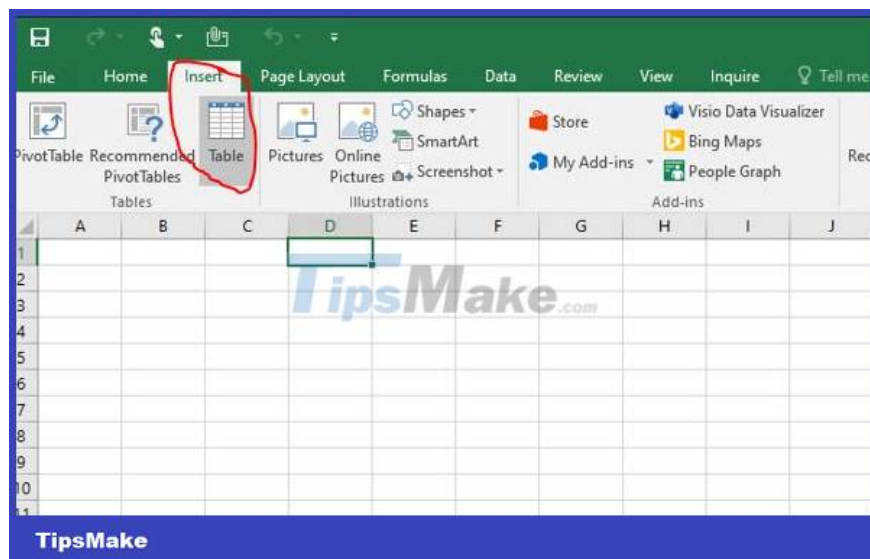


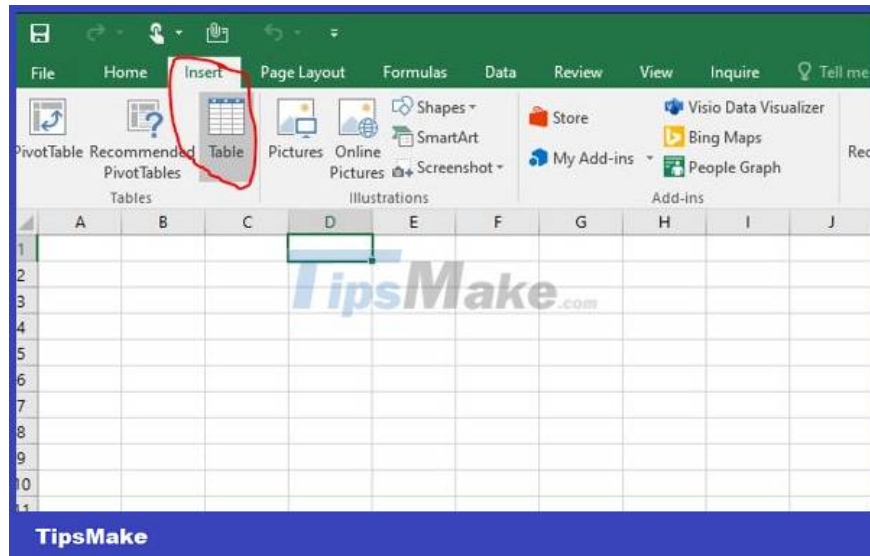
After checking, you just need to check again to see that Excel has automatically jumped to the formula after you enter the data in the next line.

Method 2: Create Table for data area

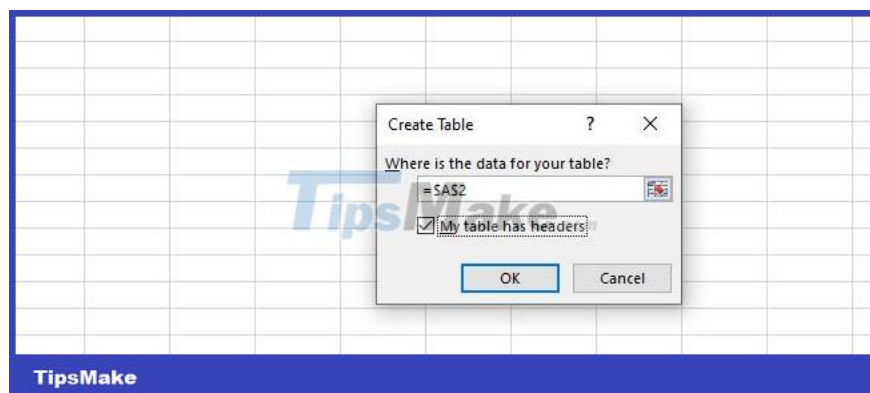
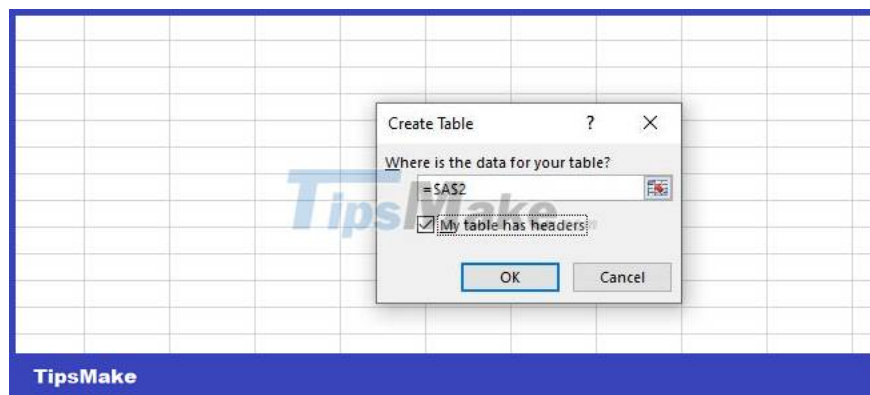
Many people recommend using this method because it is very convenient to update formats, tables and formulas.

1. **Step 1** : First, the user needs to tick any cell of the available data area > Then, click the **Insert** tab > Tick **Table** (faster than clicking any cell and then pressing the shortcut **Ctrl + T**)





1. **Step 2** : All your data areas will flash > A small window will display (in the frame is the selected data area cell) > Check the line 'My table has headers' > Click **OK** to close again.



1. **Step 3** : At this point, your data area has been created as a table > When entering new data and pressing **Enter**, the formulas will automatically update. Note, if you see the cells displaying the formula automatically only display *N/A > You need to make sure you have entered the original data to display the formula.

TipsMake has finished sharing how to make Excel formulas jump automatically when entering data on a new line. Hopefully this solution will help you work faster and more conveniently.

You finished reading the article "**Learn how to make Excel formulas automatically jump when entering data into the next line**" edited by the [TipsMake](#) team. We hope this article has provided you with many useful tech tips and tricks. You can search for similar articles on tips and guides. Thank you for reading and for following us regularly.
