

# Learn about Windows Server 2012 (Part 1)

Windows Server 2012 interface is easy to confuse users with previous versions like Windows Server 2008 or Windows Server 2008 R2.

Windows Server 2012 interface is easy to confuse users with previous versions like Windows Server 2008 or Windows Server 2008 R2.

In the article below, Network Administrator will guide you how to manage Task Manager on the new interface.

## 1. Introduction

On Windows Server 2012, the Metro interface and Server Manager have some changes.

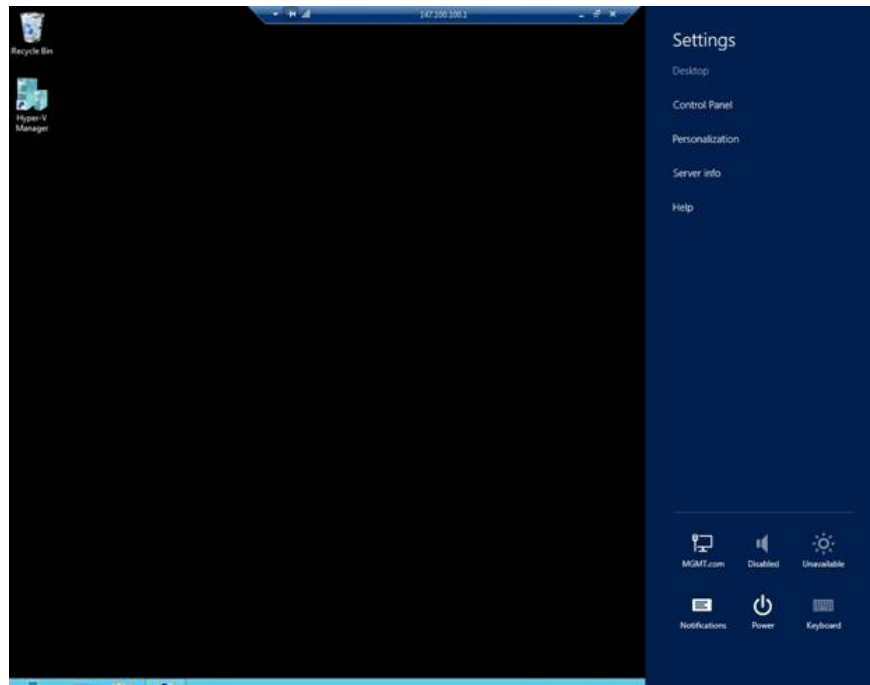
And in fact, many Admin, users have difficulty implementing some basic commands because the new interface is completely different from the interfaces they used.

## 2. Restart the device

On Windows Server 2012, the Start Menu is no longer available. Meanwhile, if you want to turn off the computer, you must access the Start Menu.

To turn off or restart your computer, move your mouse over the top right corner of the screen. Windows will now display a series of icons on the right side of the screen. Click on the Settings icon (Settings) to display the Settings page (Settings).

Here you will see the Power button (power button). You can turn off or restart the computer by clicking on Button and selecting the option.



### 3. Access Control Panel

There are many ways to access Control Panel. Here are 2 ways to access the most popular Control Panel:

#### Method 1:

Move the mouse over the upper right corner of the screen. Windows will now display a series of icons on the right side of the screen. Click on the Settings icon (Settings). When the Settings page appears, click Control Panel.

#### Method 2:

Another way to access the Control Panel is on the Desktop, move the mouse pointer to the lower left corner of the screen. Tile Start will now appear on the screen. Your task is to right-click on tile Start, a new menu will appear. In this Menu contains the option to access Control Panel.

### 4. Access Administrative Tools

On Windows Server 2008 and Windows Service 2008 R2, you can access Administrative Tools by clicking the Start button, selecting All Programs, and then clicking Administrative Tools.

However, on Windows Server 2012 you can not do this as above because Start Menu on Windows Server 2012 is no longer available.

To access Administrative Tools on Windows Server 2012, you can use Server Manager:

You can see in the illustration below, Server Manager Tools menu contains the same Administrative Tools as on Windows Server 2008.



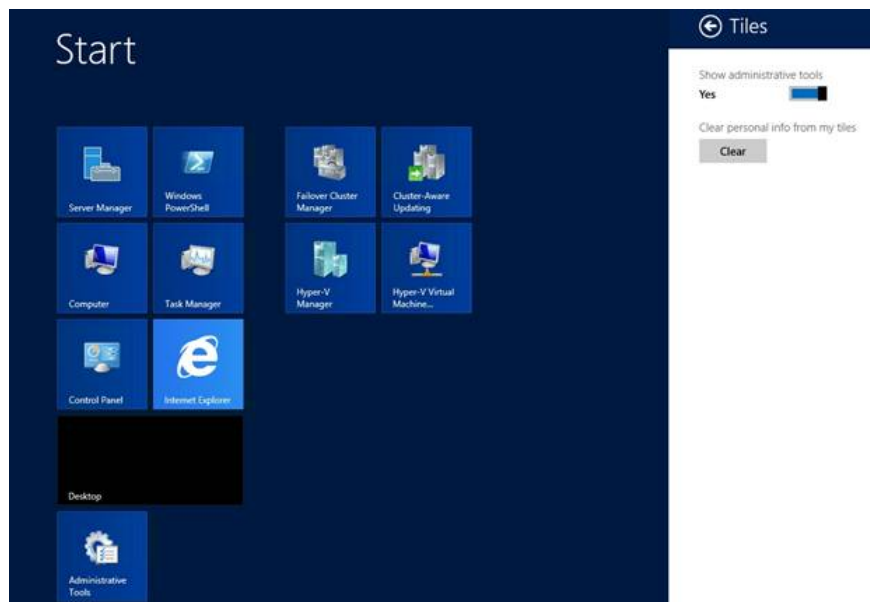
However, each time you want to access the Administrative Tools, you must access the Server Manager.

To access Administrative Tools more easily, you can set up access tools on Start Screen.

First on the Start Screen screen (not the Desktop), move the mouse to the upper right corner of the screen, click on the Settings icon (Settings).

When the Settings page appears, click on Tiles.

In the illustration below you see there is a slider. Does this slider use Administrative Control to display on Start Screens?



## 5. Access your applications (Apps)

One of the biggest drawbacks on the new interface makes users feel uncomfortable that all applications are not arranged on the Start Menu.

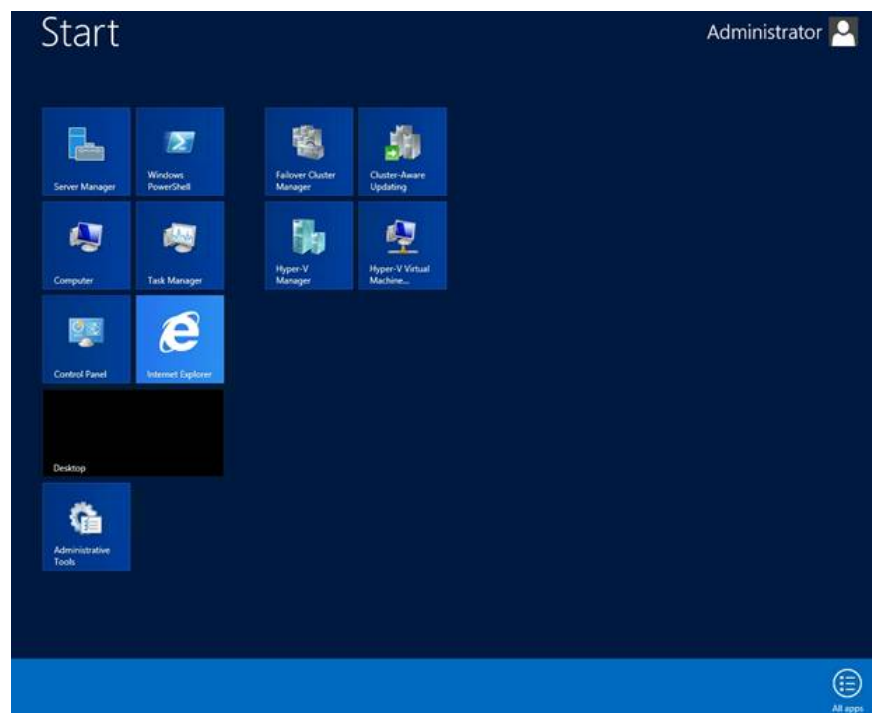
Some Admin found that after upgrading a previous version of Windows Server, the Start Screen contained only a small set of items that were previously on the Start Screen.

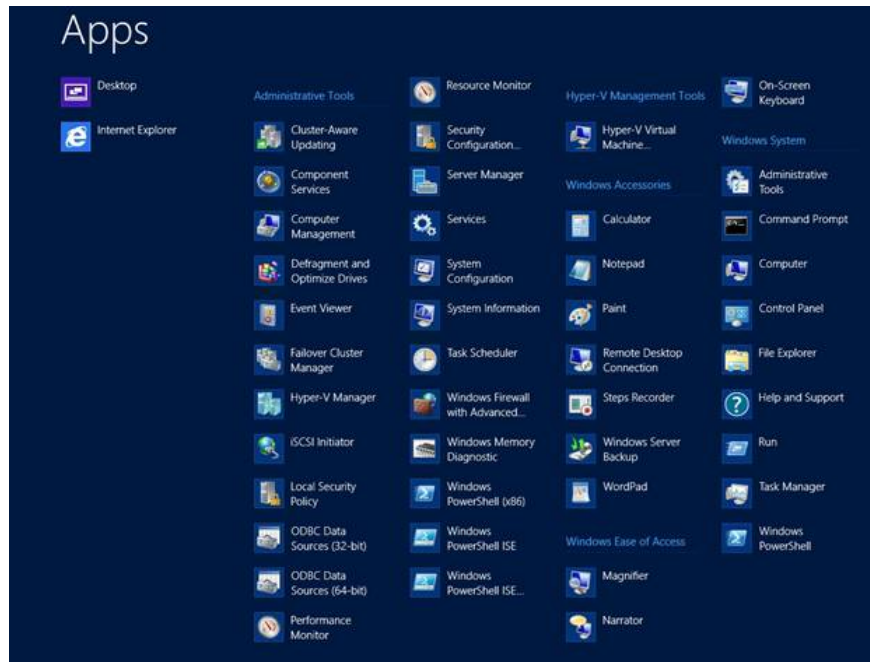
However the previous items on Start Screen do not disappear but remain on the computer. If you want to use it, you have to search for it on the machine.

To access all hidden Tile on the Start Screen, right-click any blank area on the Start Screen.

Then, a green bar will appear in the bottom corner of the screen as shown below.

You click on the All Apps icon that appears on the bar. The Application interface (Apps) will now appear on the screen. The applications are classified correctly as on the Start Menu.





## 6. Run Prompt and Command Line

In previous versions of Windows Server, you can use the Run prompt and Command Line easily and quickly.

For example, if you want to set up to access any utility like Management Console Disk, the easiest way is to open Run prompt and then enter the command DISKMGMT.MSC.

On Windows Server 2012 you can also access the Run prompt and Command Prompt easily. On the Desktop, move the mouse to the lower left corner of the screen. When Start Tile appears, right-click it. You will see a menu containing the Run, Command Prompt and Command Prompt (Admin) options.

**You can refer to some articles below:**

1. **Small tips to help you master Windows Phone 8.1**
2. **4 Ways to Reset Windows to its original state**
3. **Backup and restore data on Windows Phone 8.1**

**Wishing you and your family a happy new year!**

You finished reading the article "**Learn about Windows Server 2012 (Part 1)**" edited by the [TipsMake](#) team. We hope this article has provided you with many useful tech tips and tricks. You can search for similar articles on tips and guides. Thank you for reading and for following us regularly.

---

