

# Learn about Server role, Role service and Feature on Windows Server

What is role, what is a role service, what is a feature? We will learn about these concepts and how they are integrated in your business shortly.

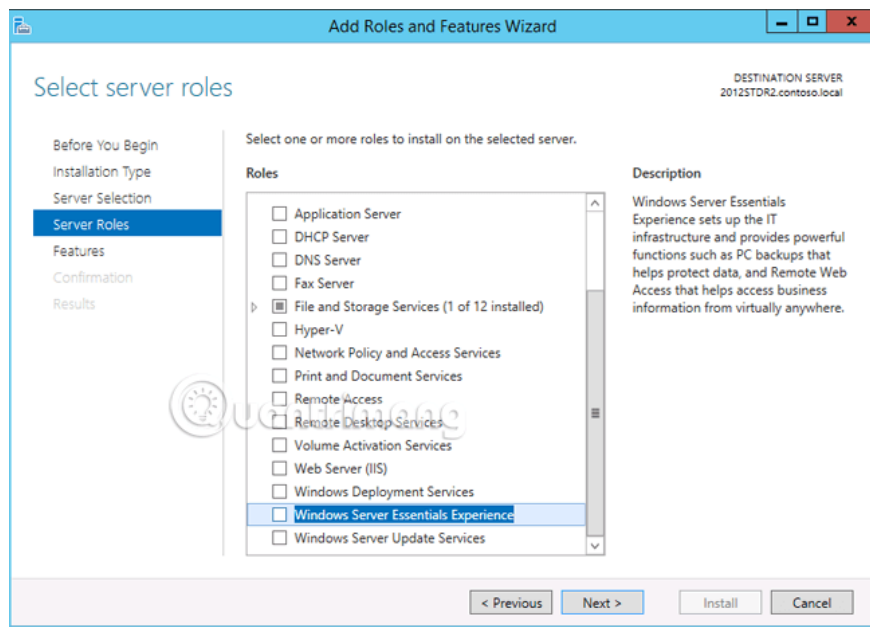
From the Windows Server 2008 R2 version, Server Manager was created to replace older management dashboards such as Configure Your Server and Manage Your Server. You will install the server software packages known as roles, service roles and features through Server Manager, before deploying the server.

So what is a role, what is a role service, what is a feature? We will learn about these concepts and how they are integrated in your business shortly.

## What is the server role?

The server role is a collection of software, when they are properly installed and configured, allowing the computer to perform specific functions for multiple users or other computers on the network. In general, roles often have the following characteristics:

1. They describe the main function, purpose or use of the computer. A specific computer can be reserved to perform a role that is used in a lot of businesses or perform multiple roles if those roles are rarely used.
2. They give users access to resources managed by other computers, such as websites, printers, and files stored on different computers.
3. They often include separate databases, can queue requests for computers, users to queues, or record information about network users and computers that are related to the role. For example, Active Directory Domain Services includes a database to store the names and hierarchical relationships of all computers on the network.



As soon as the roles are installed and configured, their functions will be executed automatically. This allows computers to install them to perform tasks with restrictions or user monitoring.

Learn about the role concept in SQL Server

## What is a Role Service?

Role services are software that provides functionality to the role. When installing a role, you can select a service role for other users and computers in the business. Some roles, such as the DNS Server, have only one function and therefore do not have a role service. Other roles such as Remote Desktop Services have several service roles that can be installed, depending on the needs of the enterprise's remote computer.

You can understand a role is a group of service roles that are closely related, most of which installing roles means installing one or more of its role services.

## What is Feature?

Feature is also software, though not part of the role, but can support or enhance functionality for one or more roles, improve server functionality, no matter what role is installed. For example, Failover Clustering enhances the functionality of other roles such as File Services and DHCP Server, by allowing these two roles to join server groups to increase redundancy and improve performance.

Another feature is Telnet Client, which allows you to remotely communicate with the telnet server via a network connection, a function that enhances the server's communication options.

Hopefully, through this article, you understand and distinguish 3 important components in Windows Server.

Thank you for following the article!

See more:

1. Instructions for installing Windows Server 2012 step by step
2. Learn about Windows Server 2012 (Part 1)

You finished reading the article "**Learn about Server role, Role service and Feature on Windows Server**" edited by the [TipsMake](#) team. We hope this article has provided you with many useful tech tips and tricks. You can search for similar articles on tips and guides. Thank you for reading and for following us regularly.

---