

Learn about Content Aware Fill in Adobe Photoshop CS5

In the following article, we will introduce you some features of Content Aware Fill feature in Adobe Photoshop. This is one of the incredible changes in CS5 version of today's most popular graphics application ...

TipsMake.com - In the following article, we will introduce you some features of Content Aware Fill feature in Adobe Photoshop . This is one of the most dramatic changes in CS5 version of today's most popular graphics application.

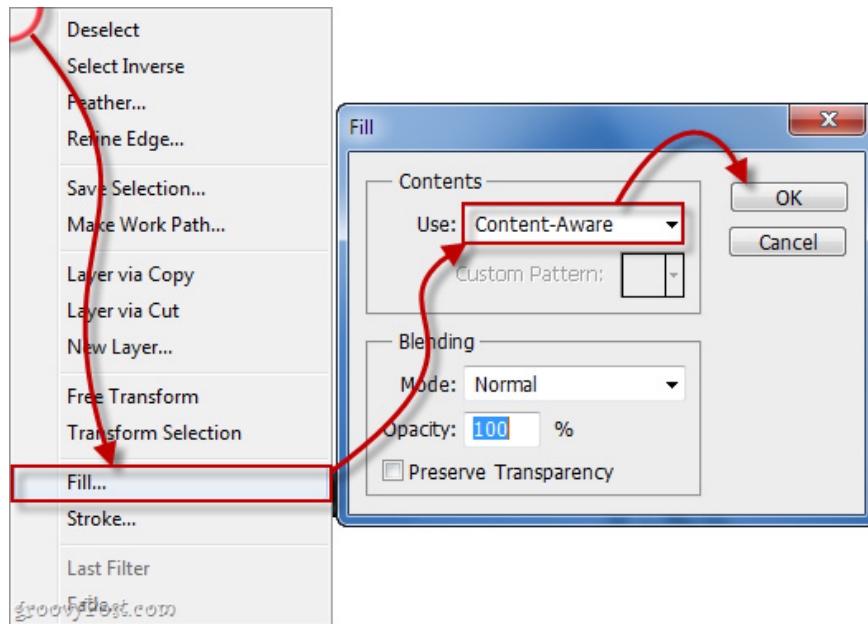
Our test picture here:



Select the **Rectangular Marquee Tool** (or any other area selection tool), then select the area to delete.



Right-click on the selection and press **Fill** or through the **Edit> Fill** menu , then switch the **Use** menu to **Content-Aware Fill**, **Blending Mode** to **Normal** , **Opacity** to 100%.

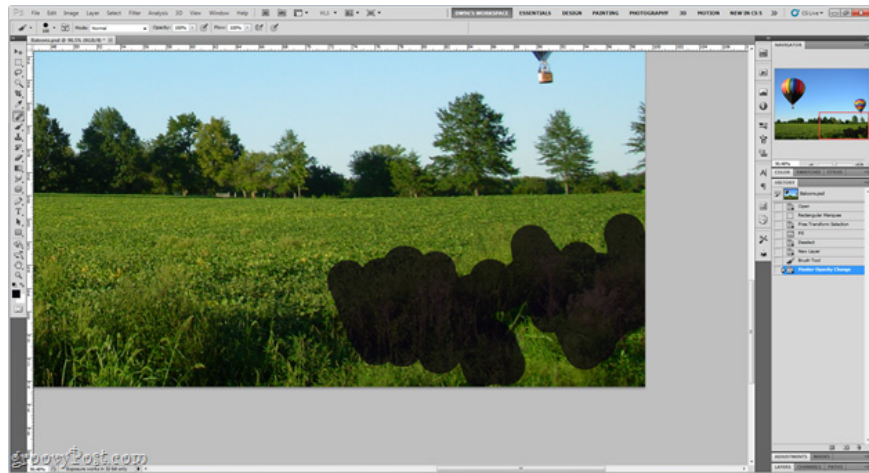


And our results at this step:

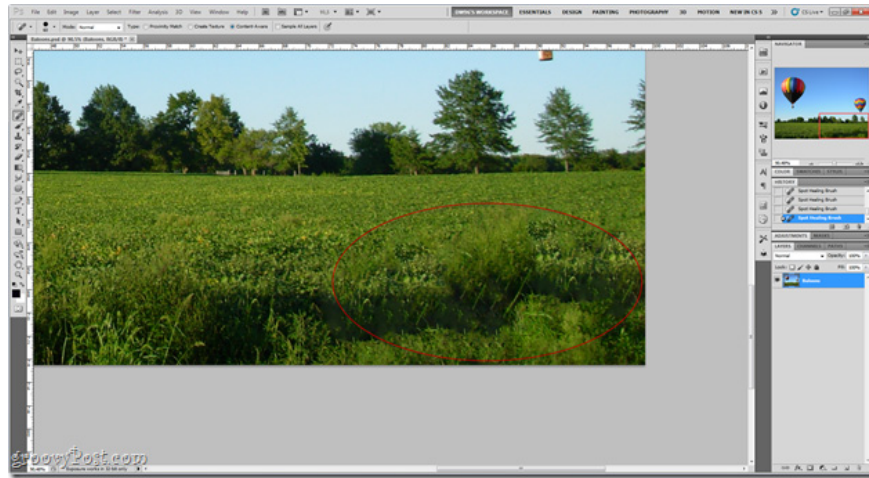


Only the balloon disappears, instead the image of the sky and a few tops of trees created by Content Aware Fill

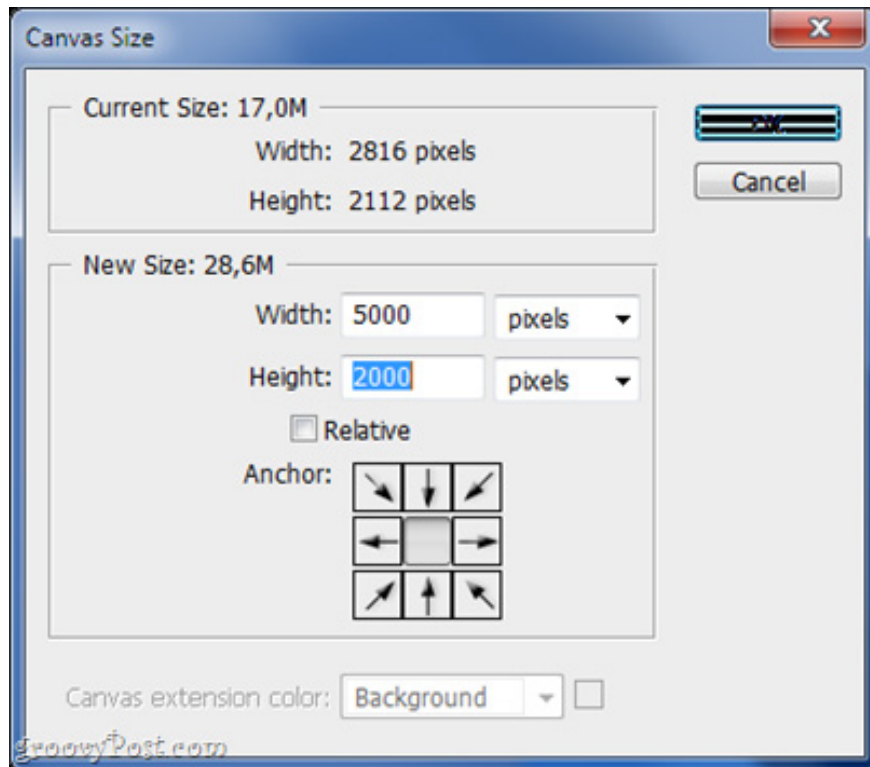
Besides, using **Content Aware Fill** also helps us in cases where it is necessary to remove small, unnecessary details in the image. For example, the requirement here is to remove images of weeds in the landscape picture as below, or a few sparks around the sun . In such cases, you Select the **Spot Healing Brush Tool** and set the mode to **Content-Aware** . As below, we will paint the weeds in the photo:



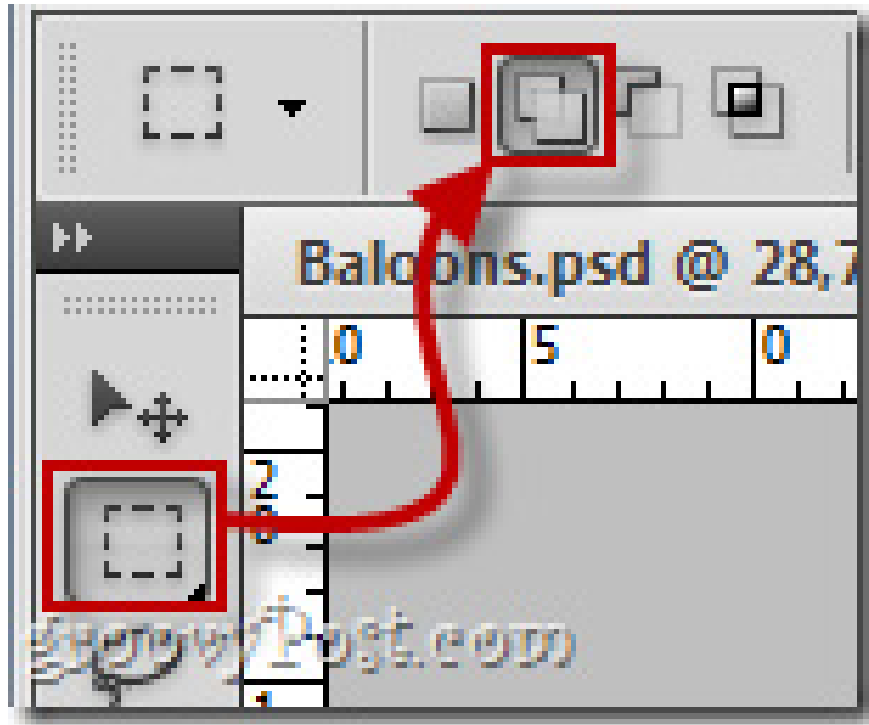
And the results are surprising:



At this step, our edited photo is much nicer, but the ratio is not really accurate. Select **Image > Canvas Size** and try to increase the parameters **Width** and **Height** to:



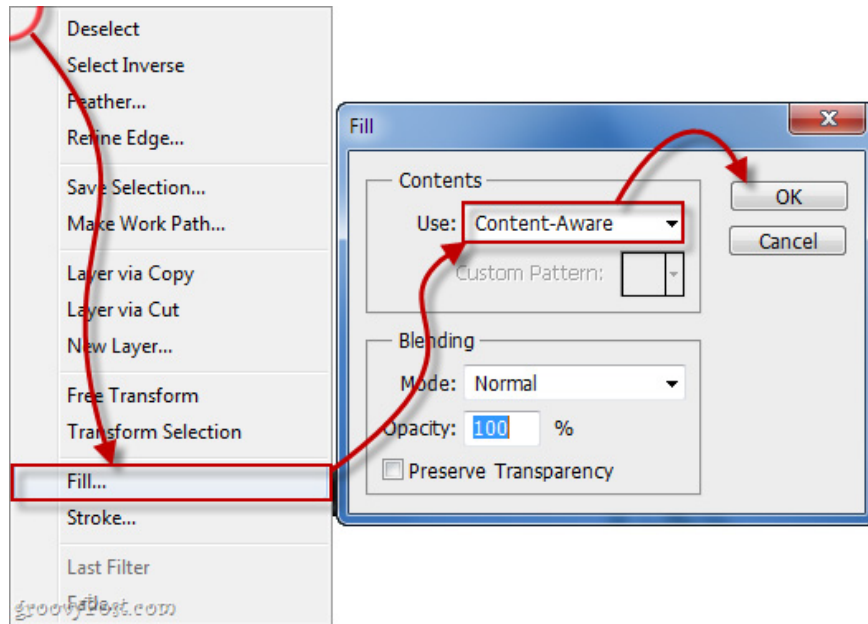
Next, use the **Rectangular Marquee Tool** and change to the **Add To Selection** mode to select the parts of the highlighted image **Transparency** when you increase the image size.



While selecting, make sure that we need to keep a small part of the image, to ensure accuracy and bring better performance in the next steps:



Next, repeat the steps above, right-click and select Fill, leaving the old settings unchanged.



Result:



With **Content-Aware Fill** , our image editing will be much simpler than before, especially for small detailed photos that need to be removed.

>>>**Video tutorial:**

Good luck.

You finished reading the article "**Learn about Content Aware Fill in Adobe Photoshop CS5**" edited by the [TipsMake](#) team. We hope this article has provided you with many useful tech tips and tricks. You can search for similar articles on tips and guides. Thank you for reading and for following us regularly.