

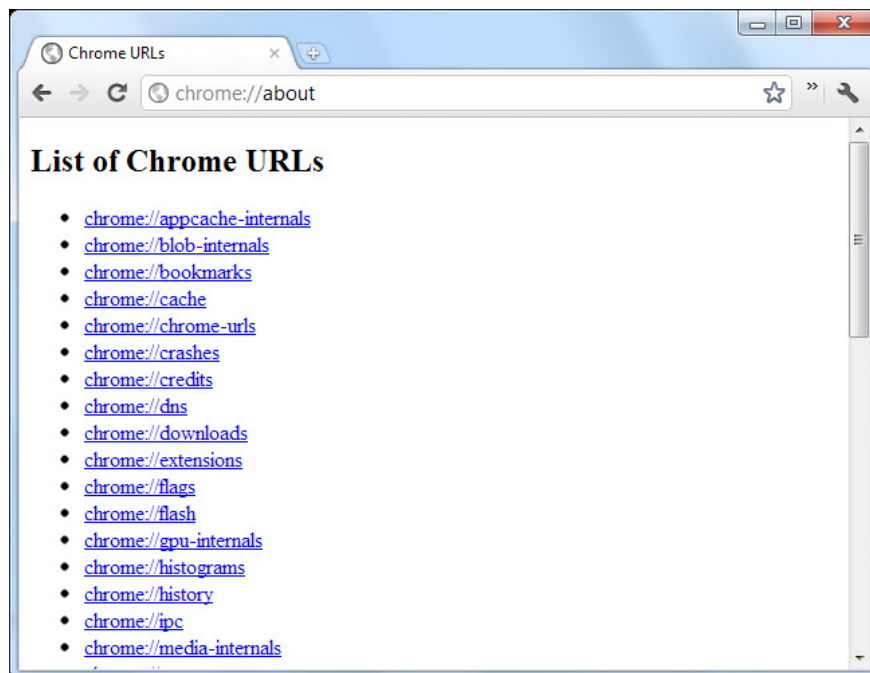
# Learn about Chrome: // Chrome page

In the previous article, we introduced you to some of the technical features of Firefox's about page, and this time we will continue to learn about Chrome's similar page system, which is `chrome://`

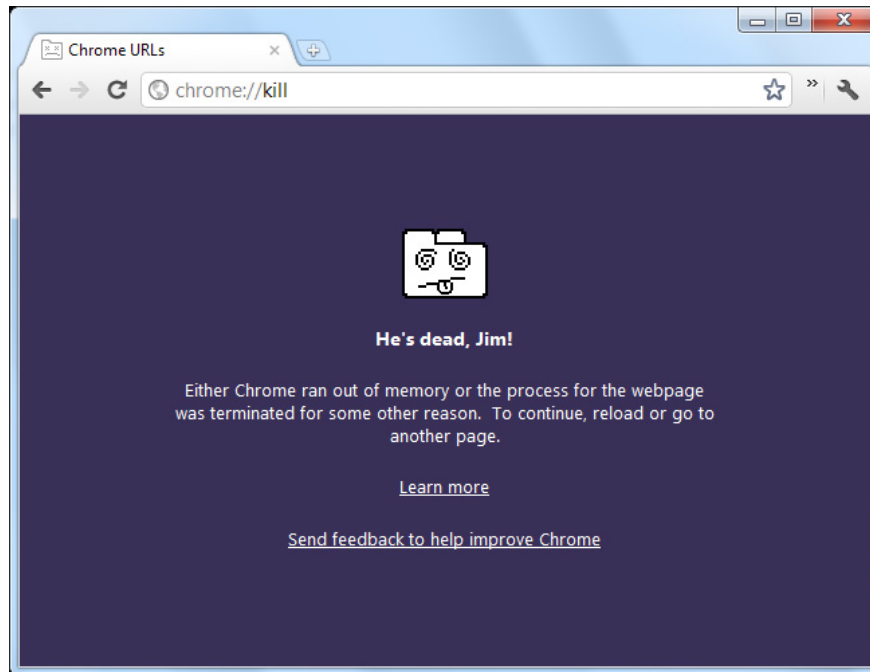
**TipsMake.com - In the previous article, we introduced you to some of the technical features of Firefox 's about page , and this time we will continue to learn about the same page system of the browser. Chrome, that's `chrome://`**

## Chrome: // About

In `chrome:// about` this page contains a lot of URLs that lead to different pages, many of which you can open through Chrome's main menu, such as `chrome:// bookmarks` is the management page. bookmark, `chrome:// settings` is Chrome 's corresponding Options page:

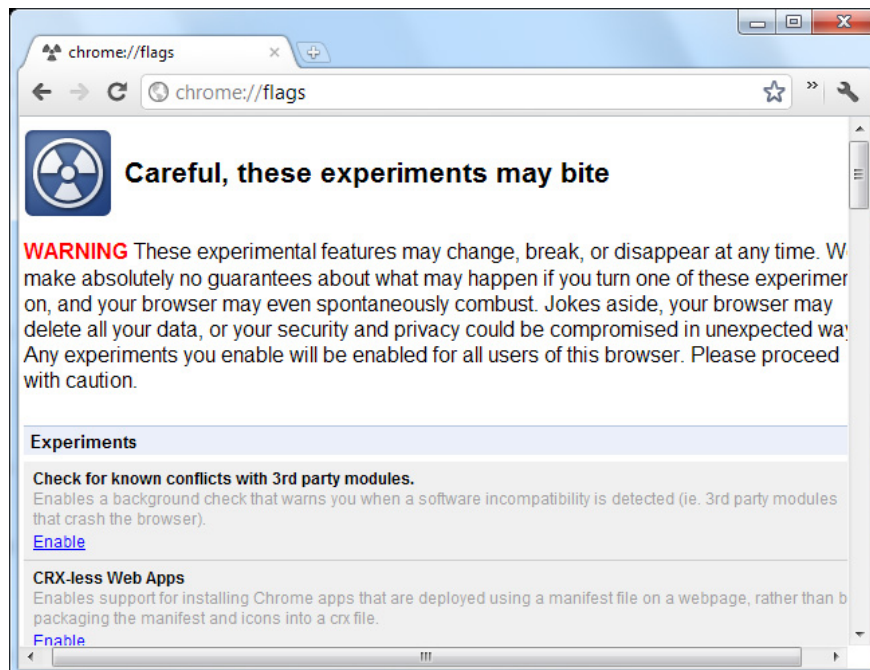


Besides, there are a few special URL paths used for debugging located at the bottom of the page. For example, type `chrome:// kill` in the Address box to turn off the open tab:

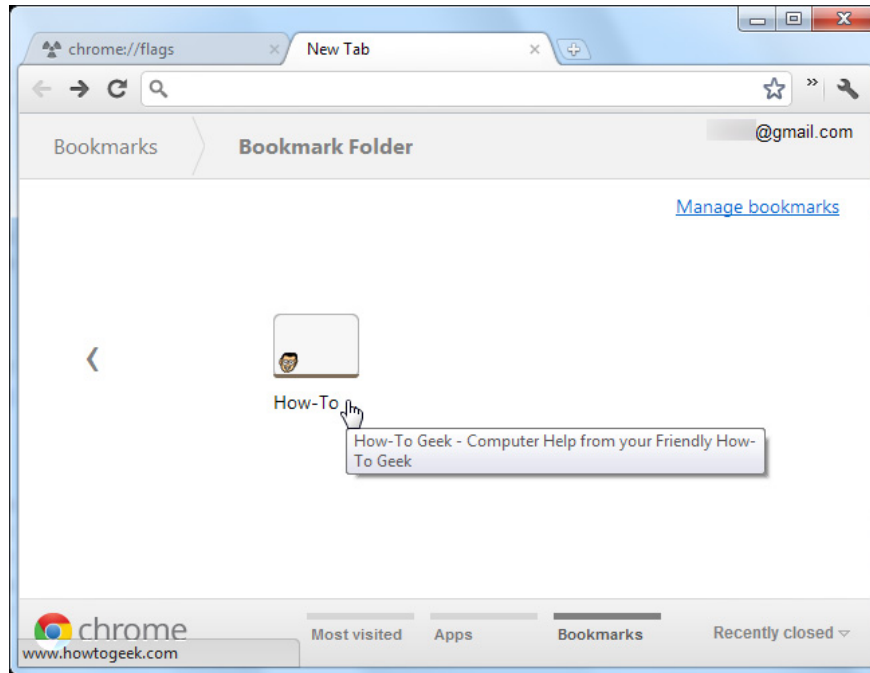


## Chrome: Flags

**Chrome: // flags** , or **chrome: // labs** pages can be considered the most interesting part of Chrome. Almost all of the features here have not been activated and used in the default mode, and Google also recommends that users be absolutely careful when tampering and editing technical attributes. here. These internal features are related to security, management policies, and stability, but may result in data loss. So consider carefully before deciding to use!

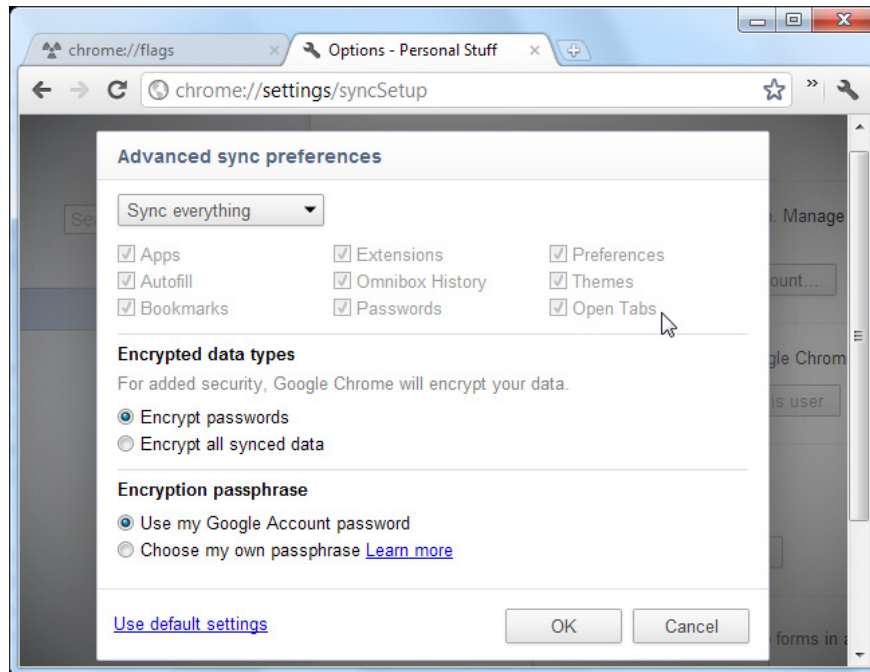


New features are usually enabled here before they are enabled via the default mode. For example, users can enable the **Enable NTP Bookmark Features** option to add a bookmark section to Chrome's new tab. The new bookmark manager has not been enabled in Chrome 16 yet, but will definitely be changed in subsequent versions.

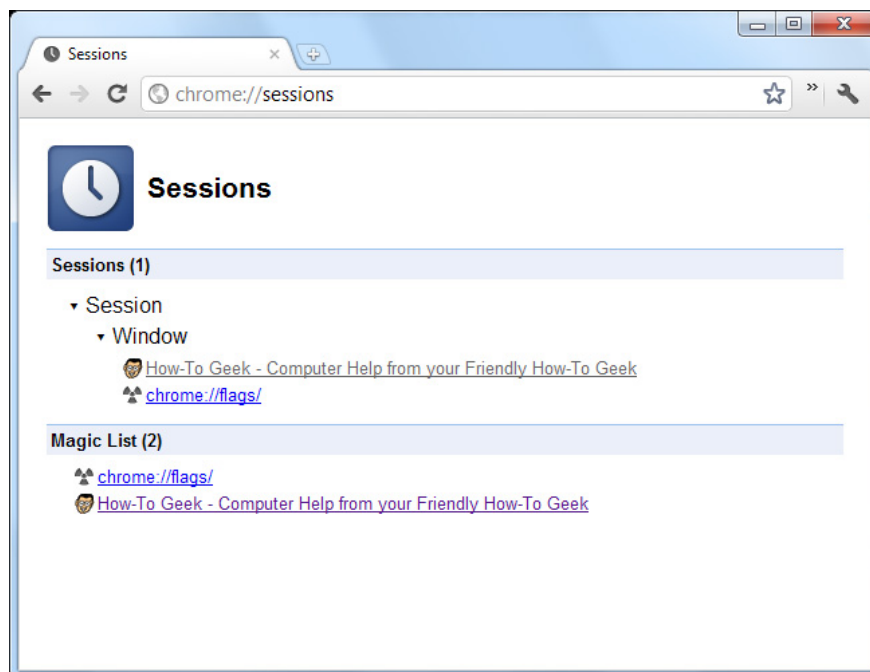


## Chrome: Sessions

Another feature is hidden inside **chrome:// flags** as **Enable Syncing Open Tabs** , with the main effect being to add the **Open Tabs** option in **Chrome 's Sync Settings** section:



After activation, we will see a list of browser sessions in the **chrome: // sessions**.



However, this feature is already available in default mode and displayed on Chrome's main interface.

## Chrome: // Memory and Chrome: // Tasks

In **chrome: // memory** , users will know more about Chrome's memory usage information, specifically for the extension and associated applications. In case there are other browsers running, such as **Mozilla Firefox** or **Internet Explorer** , it will also display the usage of those browsers.

The screenshot shows the 'About Memory' page in Chrome. It features a summary table and a processes table.

| Browser                   | Memory    |          |           | Virtual memory |           |
|---------------------------|-----------|----------|-----------|----------------|-----------|
|                           | Private   | Shared   | Total     | Private        | Mapped    |
| Google Chrome 16.0.912.77 | 491,180 k | 15,220 k | 506,400 k | 500,736 k      | 256,784 k |
| Firefox 10.0              | 107,664 k | 8,432 k  | 116,096 k | 96,508 k       | 46,900 k  |

| PID  | Name                                       | Memory   |         |          | Virtual memory |         |
|------|--|----------|---------|----------|----------------|---------|
|      |  | Private  | Shared  | Total    | Private        | Mapped  |
| 6108 | Browser                                    | 112716 k | 18080 k | 130796 k | 100592 k       | 42440 k |
| 2896 | Extension<br>LastPass                      | 11720 k  | 15660 k | 27380 k  | 11832 k        | 12100 k |
| 4600 | Extension<br>Google Dictionary (by Google) | 6968 k   | 13772 k | 20740 k  | 7120 k         | 11748 k |
| 5188 | Extension                                  | 6632 k   | 14276 k | 20908 k  | 6712 k         | 11436 k |

Besides, you can open **chrome: // memory page** by clicking on the link **Stats for nerds** at the bottom of the **Task Manager** window of Chrome, right-click on Chrome's title bar and select **Task Manager** or type **chrome : // tasks** into new tab:

The screenshot shows the 'Task Manager - Google Chrome' page. It displays a table with columns for Page, Memory, CPU, Network, and FPS.

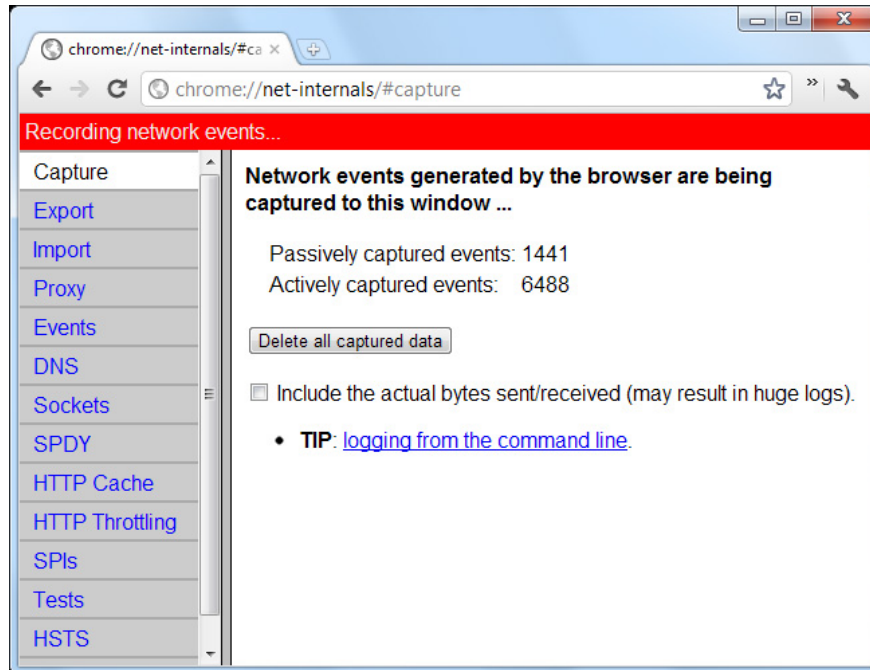
| Page                                       | Memory   | CPU | Network | FPS |
|--|----------|-----|---------|-----|
| Browser                                    | 115,044K | 5   | 0       | N/A |
| ★ Tab: Bookmark Manager                    | 8,612K   | 0   | 0       | 0   |
|  | 22,600K  | 0   | 0       | 3   |
|  | 29,984K  | 0   | 0       | 2   |
|  | 31,592K  | 0   | 0       | 11  |
|  | 26,900K  | 0   | 0       | 16  |
|  | 27,448K  | 0   | 0       | 15  |
| App: Find Hidden Features On Chrome's Inte | 64,628K  | 0   | 0       | 5   |
| Tab: Options - Under the Hood              | 16,608K  | 0   | 0       | 0   |
| Tab: About Memory                          | 7,892K   | 0   | 0       | 0   |
| Tab: Task Manager - Google Chrome          | 21,448K  | 4   | 0       | 2   |
| Extension: LastPass                        | 11,732K  | 0   | 0       | N/A |
| Extension: Google Dictionary (by Google)   | 6,996K   | 0   | 0       | N/A |
| Extension: Google Mail Checker             | 6,632K   | 0   | 0       | N/A |
| Extension: Google Chrome to Phone Extens   | 7,040K   | 0   | 0       | N/A |
| Extension: Google Quick Scroll             | 6,212K   | 0   | 0       | N/A |

At the bottom, there is a link for [Stats for nerds](#) and a button for **End process**.

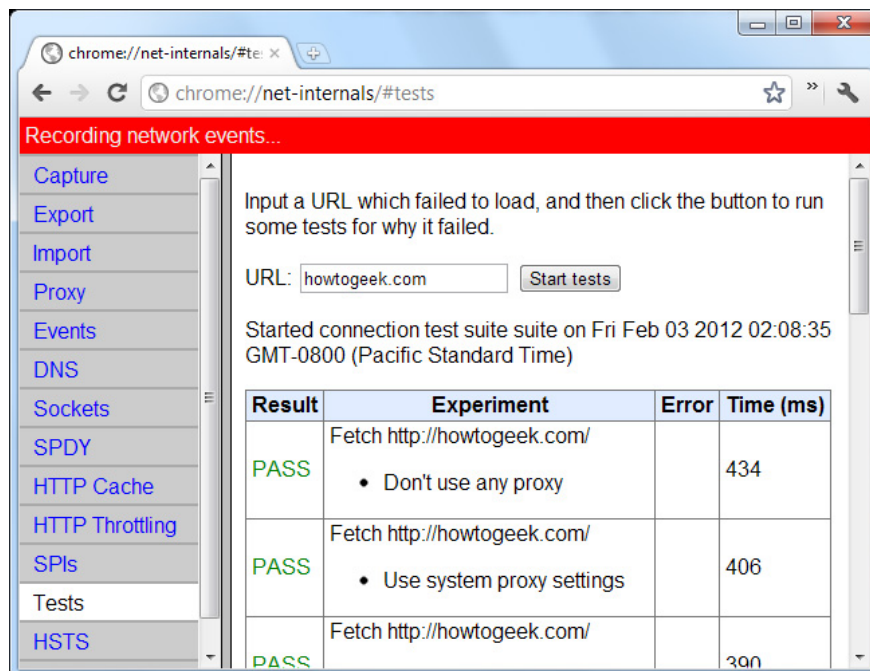
## Chrome: // Net-Internals

On the other hand, the **chrome: // net-internals page** will show all the information and tools that support managing, monitoring and diagnosing connection problems. Support the ability to 'capture' network packets,

analyze and save reports to files for future use.

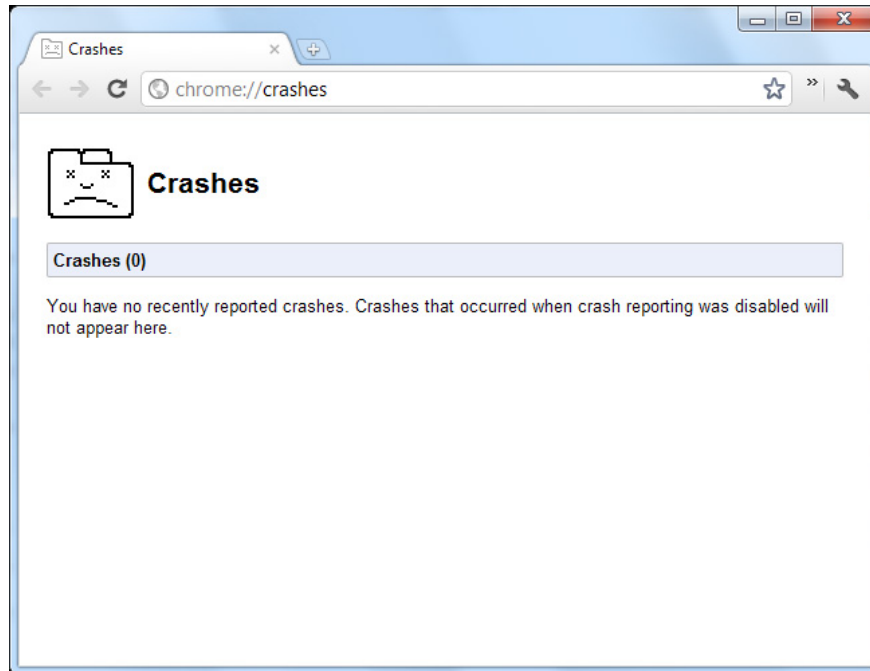


However, most of the tools here are not suitable for normal users, but the **Tests** section is different. If a website is inaccessible, enter the site's address in the **Tests** page and **Chrome** will determine the exact problem for you.



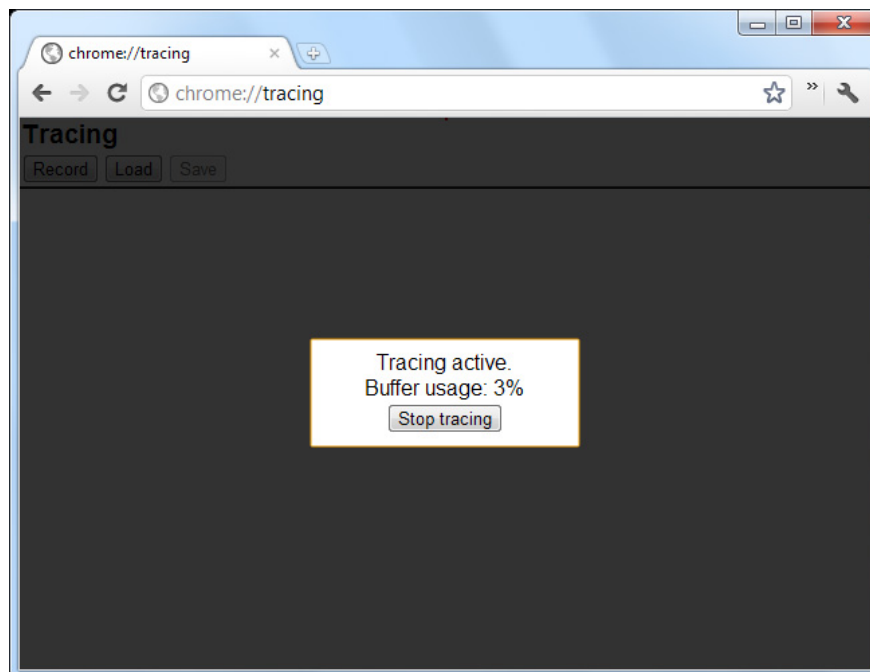
## Chrome: // Crashes

In the **chrome: // crashes** section , the browser will list all the most recent errors. However, we can only see this error if **Automatically send usage statistics and crash reports to Google** options are enabled under **Under the Hood of Chrome Settings** .

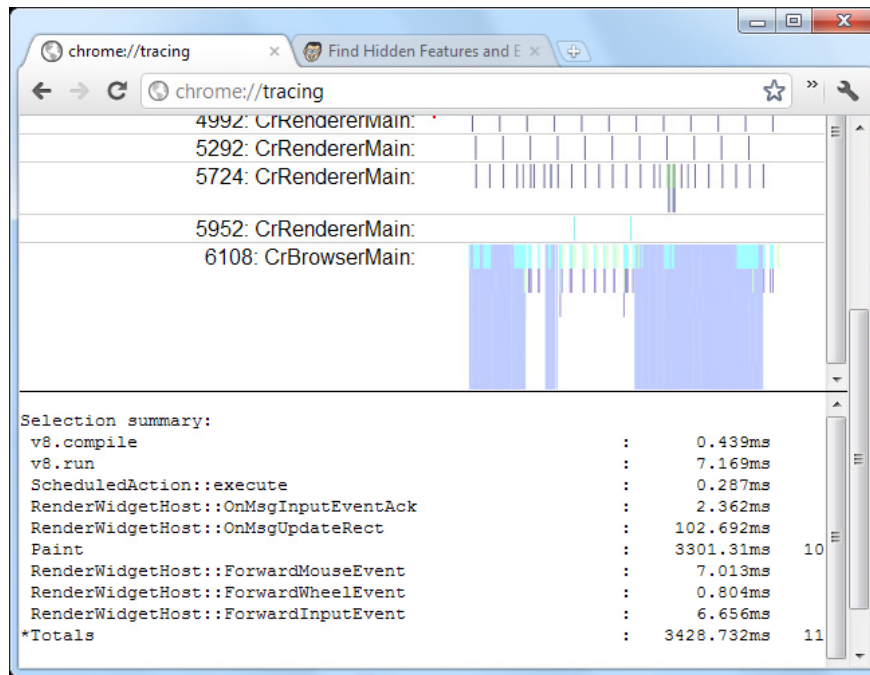


## Chrome: // Tracing

**Chrome** page : // **tracing** is actually a tool being developed to allow users to analyze **Chrome** 's performance. Just press the **Record** button and Chrome will start working:



When this process is complete, we can easily know what activities are taking place and take up much of the system's hardware time and resources.



Besides, there are many other sites like, **chrome: // flash** showing information about flash plug-in, **chrome: // sync-internals** will show the process of syncing data of Chrome. Good luck!

You finished reading the article "**Learn about Chrome: // Chrome page**" edited by the [TipsMake](#) team. We hope this article has provided you with many useful tech tips and tricks. You can search for similar articles on tips and guides. Thank you for reading and for following us regularly.