

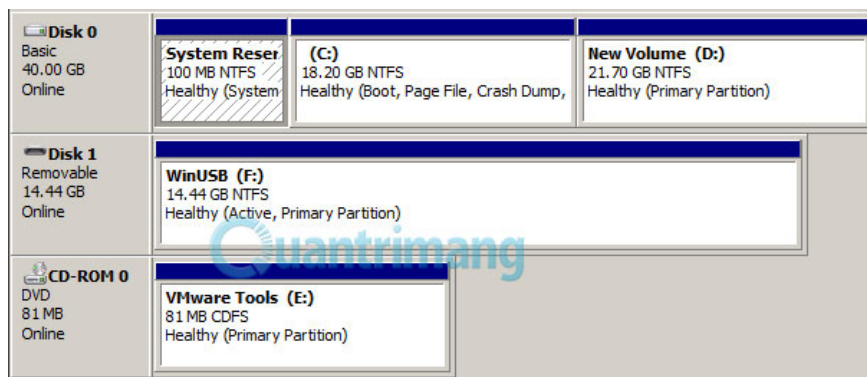
Learn about 100MB partition when installing Windows 7/8 / 8.1

In the following article, we will introduce you to 100MB partition of Windows 7/8 / 8.1, and how to handle this partition when you want to back up your system using Norton Ghost, Acronis True Image ...

Since Windows 7 appeared, Microsoft has "moved" the system boot files to a small partition with a capacity of 100MB, and doing this backs up the system using Norton Ghost, Acronis True Image . . It was much harder than before. In the following article, we will introduce you to 100MB partition of Windows 7/8 / 8.1, and how to "handle" this partition when you want to back up your system using Norton Ghost, Acronis True Image . .

1. How to create a Windows 8 USB stick?
2. Install Windows 10 in parallel with Windows 7 or 8

1. What's in that 100MB partition?



Whether you install Windows 7/8 / 8.1 / 10, install on a real or virtual machine . there will always be a 100MB partition

There are a lot of ideas about this 100MB partition, and based on the information given by Microsoft experts, the purpose of this partition exists: for Windows Recovery Environment (WinRE) - actually has existed since Windows Vista (only for Windows Vista computers directly with Microsoft disks) or some other OEM computer line. Or, in a similar way, the partition **contains the boot files needed** for the operating system you just

installed, and in theory it **cannot be deleted or hidden** . Besides, if you upgrade Windows 7 from Windows XP, the partition is not created, but the file system will be stored directly in the **C: Recovery** folder.

2. Should I delete that 100MB partition? And does it affect Windows?

In a Windows environment, you cannot do this, and of course, we should not delete this 100MB partition (as mentioned above, that partition contains the necessary Windows boot files). . But what if I want to back up (or in short, Ghost machine)? Because of the nature of partition backup applications like **Norton Ghost, Acronis True Image** . only backup 1 partition only. So the answer here is that we should **not delete** this **100MB partition** .

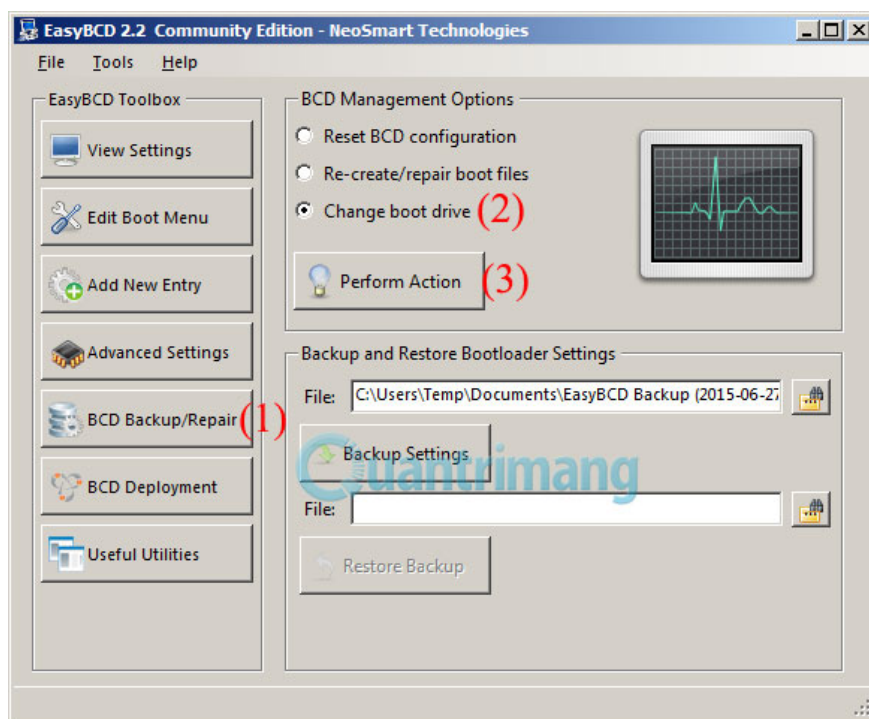
And to solve the above problem, TipsMake.com would like to introduce to you an application that can be easily overcome, which is NeoSmart Technology's EasyBCD. We can understand that **EasyBCD** will "move" system files, starting from 100MB partition to C drive (Windows installation drive).

How to do the following:

Download and install the **EasyBCD** application - **the latest Personal version** here:

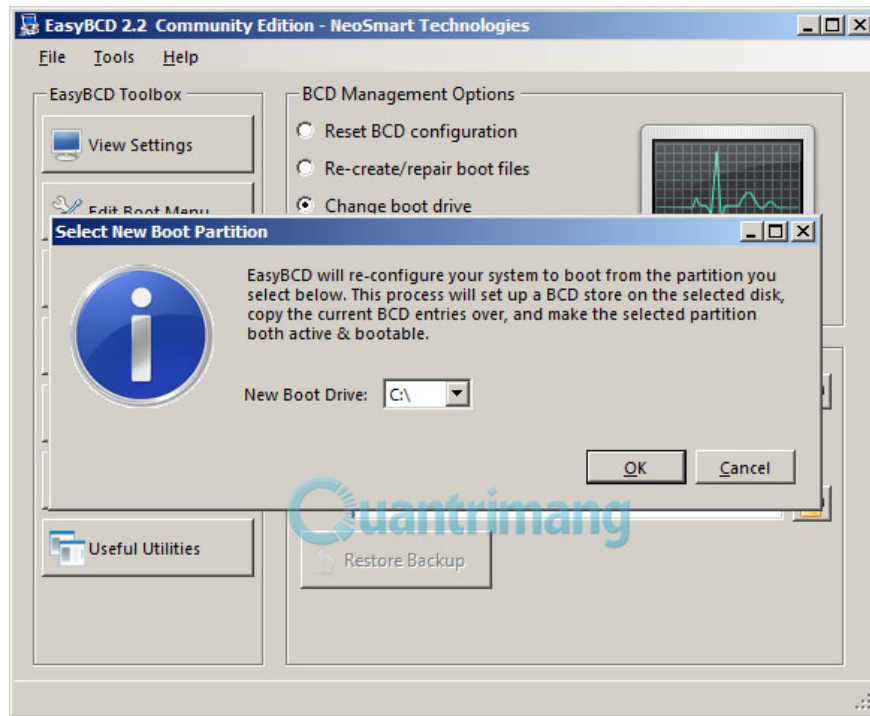
1. <https://download.com.vn/easybcd/download>

Start the program, choose in order 1, 2, 3 as shown below:

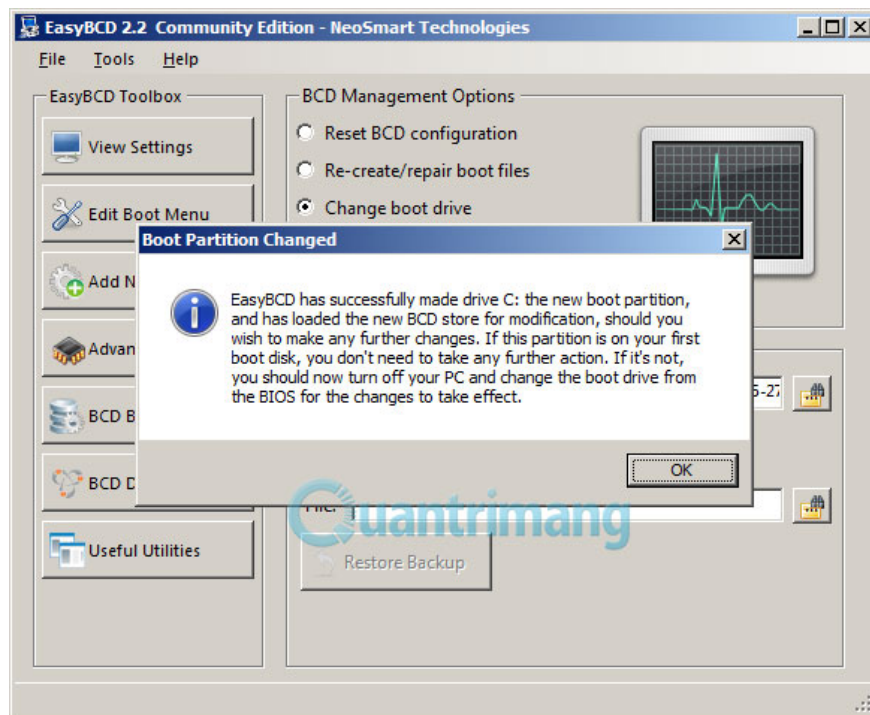


Select the **BCD Backup / Repair function**> **Change boot drive**> **Perfom Action**

Next, select the drive to move the boot and system files to (here is the C drive):



Click OK, **EasyBCD** will do the rest. When the message shown below is displayed, you restart the computer and complete:



Good luck!

You finished reading the article "**Learn about 100MB partition when installing Windows 7/8 / 8.1**" edited by the [TipsMake](#) team. We hope this article has provided you with many useful tech tips and tricks. You can search for similar articles on tips and guides. Thank you for reading and for following us regularly.
