

Laptop turns on automatically when opening the lid of Windows 10 + 11, how to solve?

Laptop turns on automatically when opening the lid of Win 10 +11 and you don't want this situation to continue to happen? Come to TipsMake to know how to fix it

Laptop turns on automatically when opening the lid of Win 10 +11 and you don't want this situation to continue to happen? Come to TipsMake to know how to fix it!

The laptop automatically turns on when opening the lid of Windows 10 + 11, which is quite a useful feature for users. At this point, you just need to open the laptop lid and the device will automatically start, no need to press the Power button like before. However, some of you don't like this feature and just want to use the physical key to open the device. Because there are many cases, the laptop lid is open but not working yet, so there is no need to open the device. So how to turn off this feature? **TipsMake** has a few ways for you to do it.



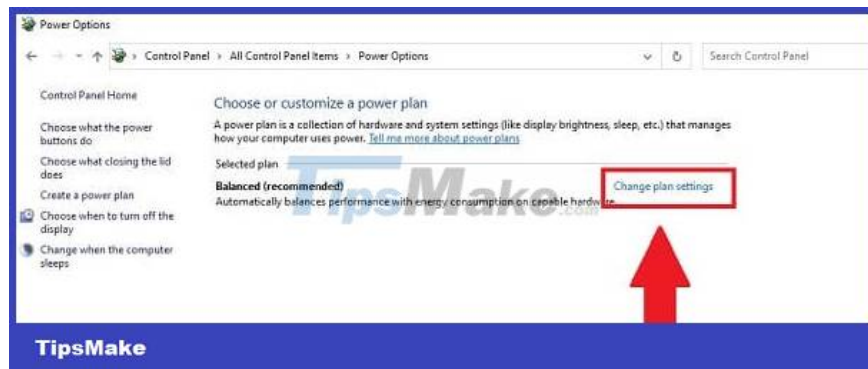
Share how to turn off the Laptop feature that automatically turns on when opening the lid of Windows 10 + 11

Laptops turn on automatically when opening the lid of Win 11, a feature equipped on some recent laptop lines. However, not all models have this feature due to limitations in the device's drivers and hardware. Therefore, if your device has a Laptop mode that automatically powers on when the lid is opened, if you need to turn it off, apply the methods below.

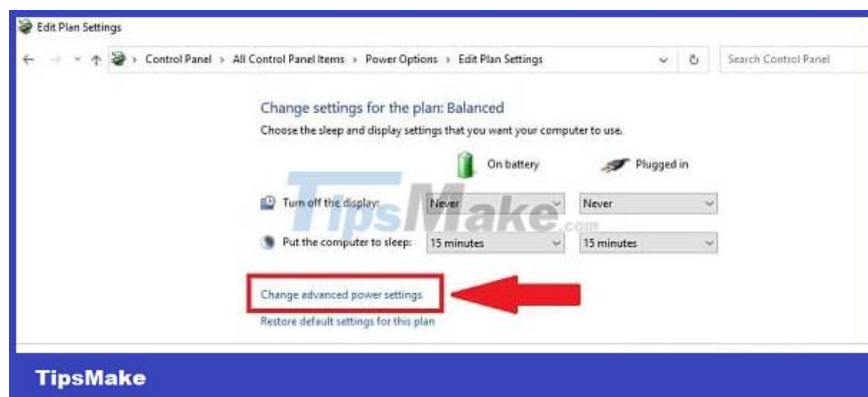
1/ Change settings from Control Panel

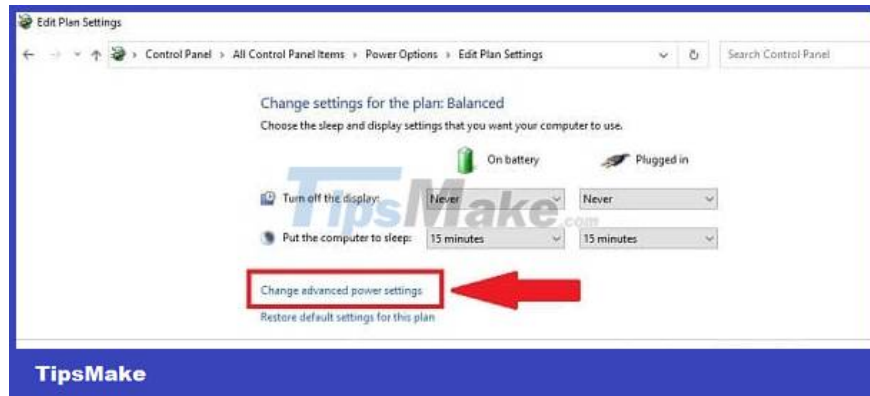
If you want to turn off your laptop that automatically turns on when opening the lid of Windows 10/Win 11, follow these steps:

1. **Step 1** : The user clicks on the search icon on the taskbar > Type and open **Control Panel** > Click on **Power Options** .
2. **Step 2** : Click on **Change plan settings** as shown.

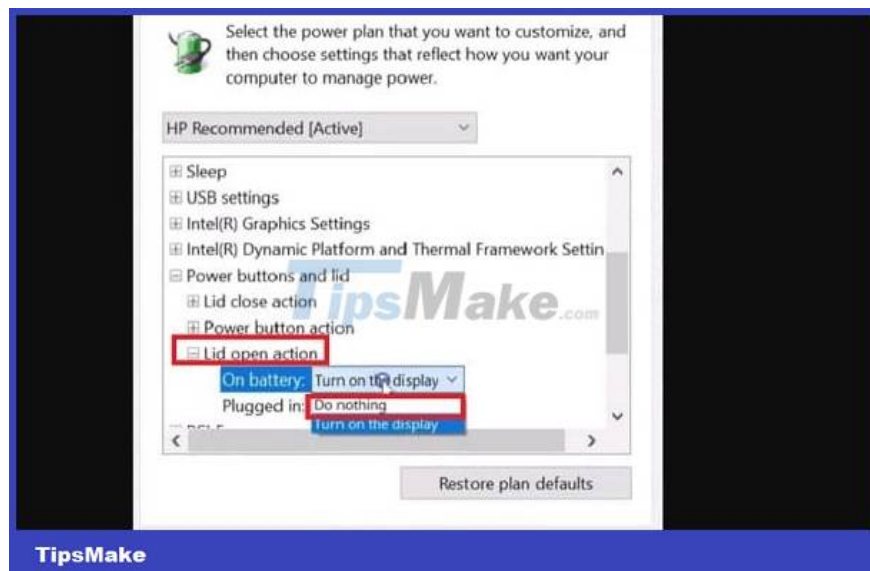
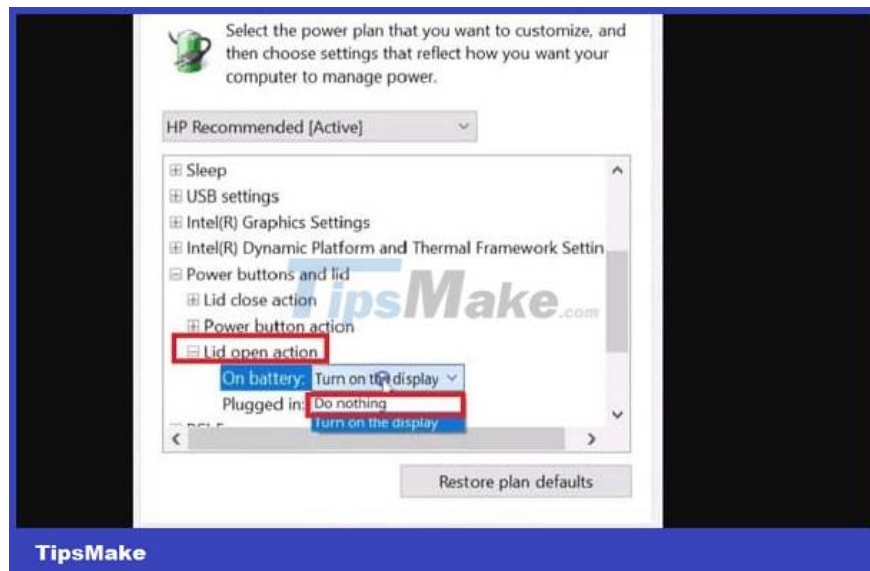


1. **Step 3** : Continue clicking on ' **Change advanced power settings** ' .





1. **Step 4** : When the dialog box displays, go to **Lid open action** > **Customize the two sub-sections ' On battery ' and ' Plugged in ' (If you don't want to open the lid, select Do nothing) > After selecting Then click **OK** and **Apply** to save.**

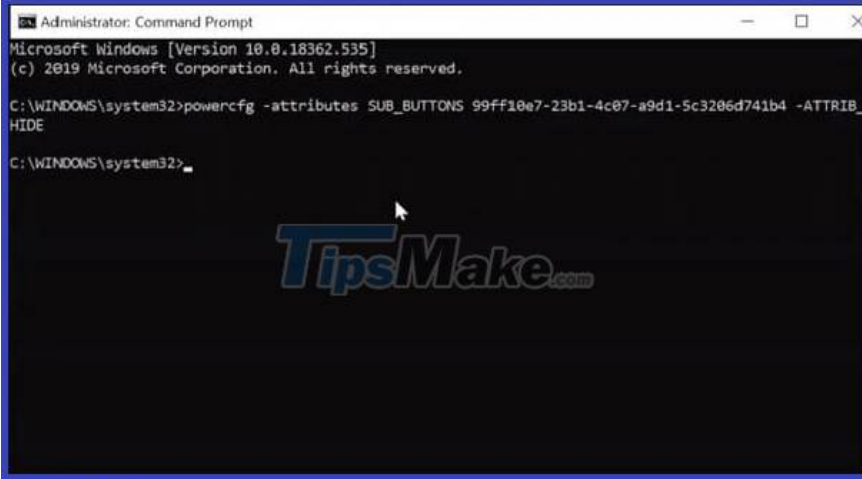


Note:

If you do not see the **Lid open action** option as instructed above. Users can apply this method: Click on the magnifying glass icon on the taskbar again, type the keyword **Command Prompt** > Click on the line **Run as administrator** to open as an administrator, when the message appears, Click **Yes** > Then, paste the command below and press **Enter** .

1. `powercfg -attributes SUB_BUTTONS 99ff10e7-23b1-4c07-a9d1-5c3206d741b4 -ATTRIB_HIDE`

Once done, redo the above steps and you will see the item you need.

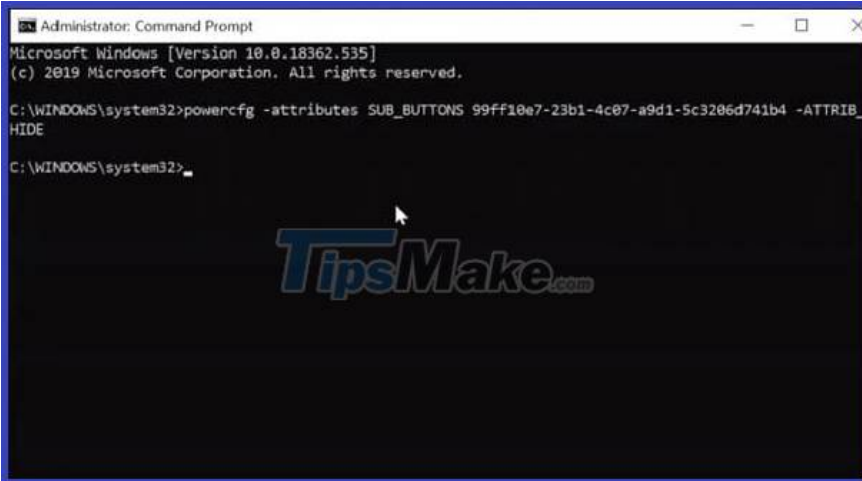


```
Administrator: Command Prompt
Microsoft Windows [Version 10.0.18362.535]
(c) 2019 Microsoft Corporation. All rights reserved.

C:\WINDOWS\system32>powercfg -attributes SUB_BUTTONS 99ff10e7-23b1-4c07-a9d1-5c3206d741b4 -ATTRIB_HIDE

C:\WINDOWS\system32>
```

TipsMake



```
Administrator: Command Prompt
Microsoft Windows [Version 10.0.18362.535]
(c) 2019 Microsoft Corporation. All rights reserved.

C:\WINDOWS\system32>powercfg -attributes SUB_BUTTONS 99ff10e7-23b1-4c07-a9d1-5c3206d741b4 -ATTRIB_HIDE

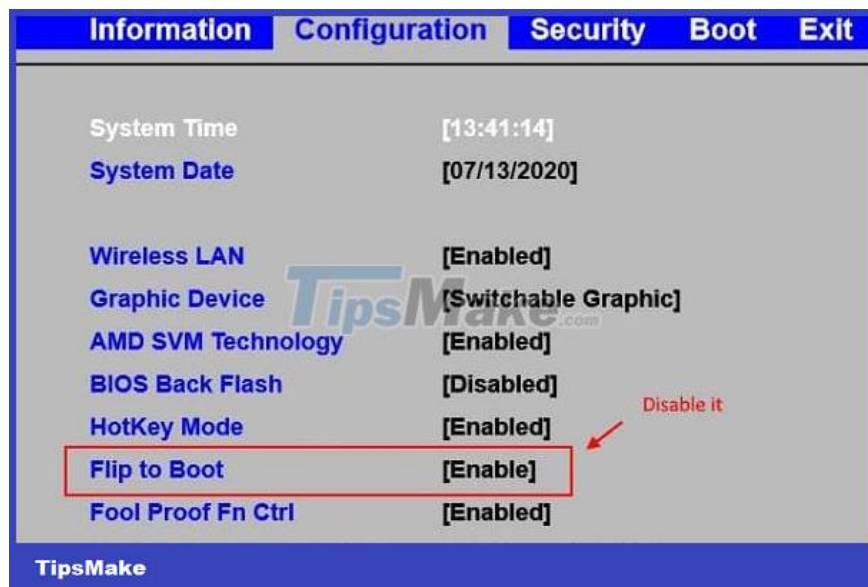
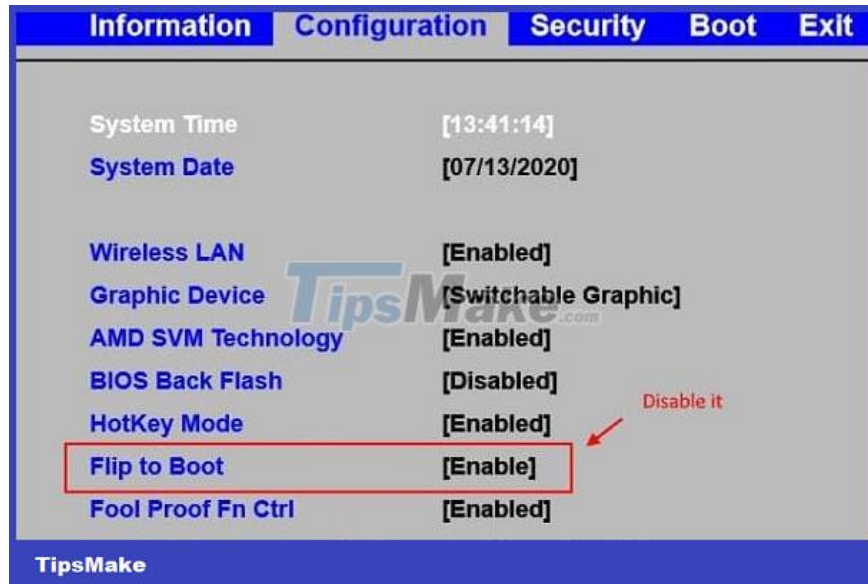
C:\WINDOWS\system32>
```

TipsMake

2/ Turn off auto-start mode on laptop with BIOS

Depending on the model of computer you are using, the way to turn off the auto-on mode on your computer is also different. Therefore, users can find out according to their device model to turn off this feature. Here I will show you how to turn off the laptop feature that turns on automatically when the lid is opened, so for each different model there will be some changes.

1. **Step 1** : You access the BIOS by holding down a specific hard key depending on the laptop model you are using. Such as F2, F8, Del, etc
2. **Step 2** : Once in the BIOS interface, users can find the ' **Configuration** ' section > Then, find the items corresponding to the 'start when the device is turned on' feature such as: ' **Flip to Boot** ', ' **Power on Lid Open** '... > Turn this feature off.
3. **Step 3** : Press F10 to save and exit BIOS > Check to see if the feature has been turned off or not.



TipsMake has shared 2 specific ways to turn off the Laptop from automatically turning on when opening the lid of Windows 10 + 11. Hopefully my sharing will help you disable this feature.

You finished reading the article "**Laptop turns on automatically when opening the lid of Windows 10 + 11, how to solve?**" edited by the [TipsMake](#) team. We hope this article has provided you with many useful tech tips and tricks. You can search for similar articles on tips and guides. Thank you for reading and for following us regularly.

