

Just because he wanted to hack the game, my brother was infected with cryptocurrency mining malware and ruined his laptop like this

The explosion of cryptocurrencies has created a number of negative consequences - including the explosion of unauthorized cryptocurrency mining on users' computers.

I have a cousin who entered middle school last year. At that time, my aunt asked me to buy a laptop - partly for my son's gift, partly for my studies.

I chose to buy the HP Elitebook 8470p at a shop specializing in used laptop business for about 8 million VND. The reason I chose this machine is due to the limited budget, but more importantly its configuration (Core i5-3320M chip, 8GB RAM, 128GB SSD) is more than enough to serve the "office" tasks. *and study* " - quote from my aunt. With such a simple need, spending more money does not bring much benefit.



I didn't take a picture of the camera I just bought, but it's basically clean and clean like this

Unexpected surprise serial

Yet, just one year later, I received a phone call from her saying, "*What's wrong with that device, please watch it for me!*"

At that time, I felt quite surprised. Elitebook is HP's most advanced and highly durable device - something that has been tested by many people. So, why does it break so quickly, especially when it is only used for "office and study" ?

And I was more surprised when I got the device back in my hand after a year away.

I was surprised to see its awful form. On the cover of the machine appears patchy, flaking paint. Some of my friends have used this model for 3-4 years, but never a phenomenon like this has happened. I do not know what created these marks: due to sweaty hands or overheating?



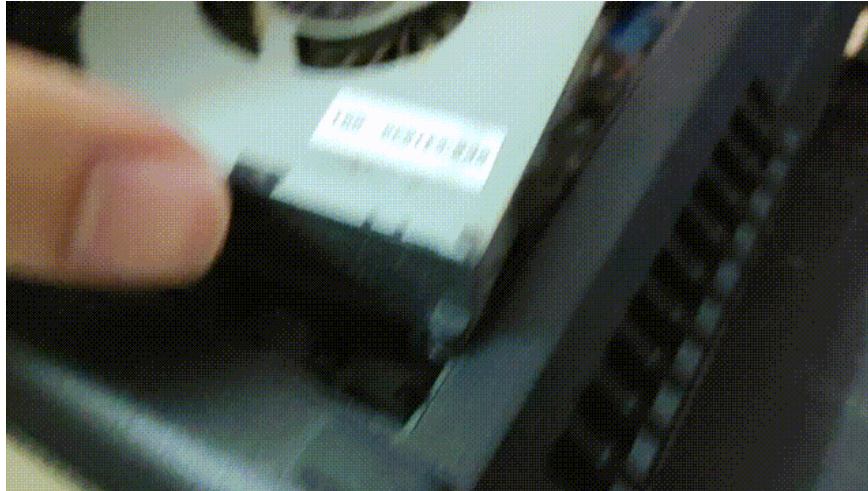
The shell is peeling paint

I was surprised to see that the Space Bar key was warped. Again - I don't understand what happened this much.



The space bar is super crooked

I was surprised to open the cooling fan and saw a large piece of dust blocking the heat sink. Surprisingly, when I bought this device a year ago, I asked the cleaning staff to clean it very well - knowing that its future owner would not have time to take to the toilet during later life cycle.



Eww .

And I was surprised to find that the device has a full battery, Windows reported not being able to charge (Not Charging). Just unplug the power, the machine will immediately collapse. With an old laptop like this, the battery bottle machine is very normal - but if the bottle to the level can not be used for a second after only 1 year, it is indeed "unbelievable".