

Invalid Partition Table is what error and how to fix it

Invalid Partition Table is what error and how to fix it. The most common cause of this error is a corrupted partition table. It is in the MBR (Master Boot Record) of the boot sector, which contains information on how to partition logical, contains file systems, organized

Invalid Partition Table is an error that is not uncommon for computer users. To know what this error is, we must first understand what a Partition Table is? Partition Table is a partition table on the hard drive, responsible for describing the partitions on that disk. If the partition table is corrupted or lost, the system will not be able to locate the partition to boot and the boot process will be paused and the Invalid Partition Table error is the failure to identify the partition table. The Invalid Partition Table error may appear when you try to install Windows on a new SSD; It may even show abruptly when you start your computer even though the operating system has always been working properly. So we have to do to fix this error to the computer works normally, please follow along the following article of TipsMake.com.



The most common cause of this error is a corrupted partition table. It is in the MBR (Master Boot Record) of the boot sector, which contains information about how to partition logical, containing file systems, organized on that medium. The most common cause of the error is a hard drive failure or a write error.

There is also another cause: Of all the available partitions on the hard drive, only one is set to be the boot partition. If MBR detects two active partitions on the current disk, the system loading will stop. This is usually caused by errors made while configuring partitions manually.

And here are some measures to fix the above error.

Method 1: Change the boot sequence to the hard drive

If your computer is attached from 2 or more hard drives, the Invalid Partition Table error will occur because the computer boots up incorrectly on a hard drive that does not contain windows. In this case, you can restart your computer. Then, access the BIOS and install to put the hard drive containing the operating system first on the list of hard drives in the computer, then it will prioritize booting into the hard drive with the operating system. Finally, restart the computer to see if the Windows system can boot normally.

Method 2 : Upgrade the BIOS version

When you install Windows 10 on an outdated SSD and BOIS drive, it can lead to the Invalid Partition Table error. In this case, you need to upgrade the BIOS to the latest version. Download the latest BIOS from the computer manufacturer's website you're using, but because you can't boot into the system, you'll need to use a different computer to create a USB boot after that. Copy the latest BIOS version to the USB flash drive and proceed with the installation on the defective computer. The steps are as follows:

1. Connect the USB to another computer
2. Visit the manufacturer's website and download the latest BIOS version
3. Copy the BIOS setup file to the USB
4. The USB connection containing the BIOS setup file to the computer has a problem.
5. Boot your computer, press **F12** on **Startup** to open **Menu boots** .
6. Select boot into USB that you have connected.
7. If the BIOS.exe file does not run automatically, you need to type the **E: XXXXXX.exe** command prompt (where E is the name of the USB drive letter and XXXXXX is the name of the file you saved to the USB drive).
8. Press Enter to run the file and install the BIOS.

Once the BIOS update is complete, continue your installation of the operating system and check for errors.

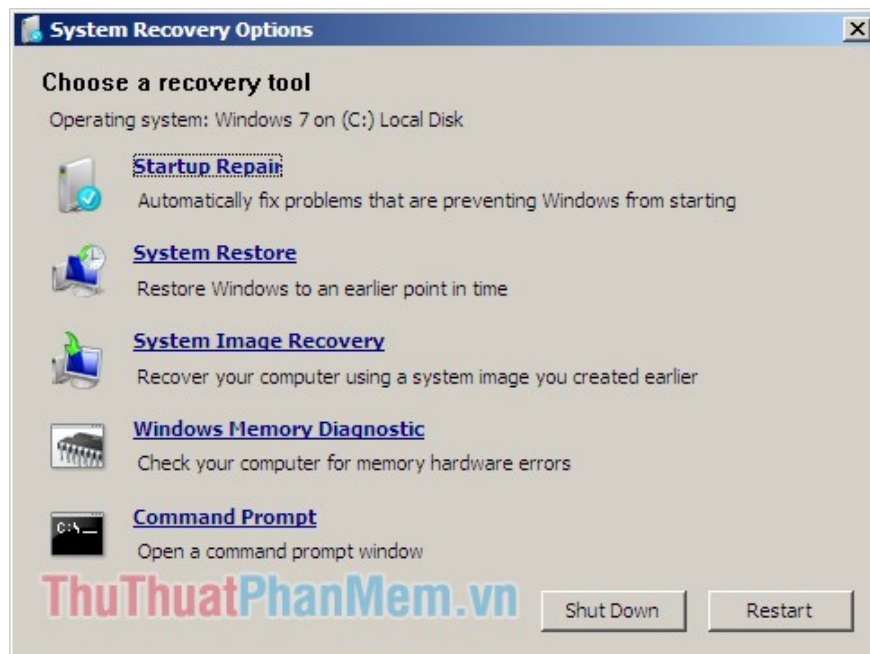
Method 3: Repair corrupted MBR with CMD command

To do this, you need a USB or Windows 7/8/10 installation disc, the steps are as follows:

1. Insert the USB flash drive or disc into the computer
2. Restart your computer and choose to boot into USB or Windows installation disc
3. Click **Repair your computer**



4. At the System Recovery Options screen, select **Command Prompt**



5. Run the following commands:

```
bootrec / fixboot bootrec / scanos bootrec / fixmbr bootrec / rebuildbcd
```

Press Enter after each command and wait for the commands to finish

6. Restart your computer and check for errors.

Method 4: Check the status of partitions with Diskpart

The integrated Windows Diskpart utility can be used to check the status of partitions and mark them inactive if necessary. To do this you also need a USB or windows installation disc.

Here are the steps to run Diskpart and change the status of the disk:

1. Boot from the Windows installation disc
2. Click **Repair your computer** after selecting the appropriate language, time and keyboard
3. Select the Windows installation drive, usually C :, and click **Next**
4. Select Command Prompt when the System Recovery Options window appears
5. Type the **diskpart** command and press Enter.
6. Then enter the **list volume** command and press "Enter" to check the active partitions. If it is an active partition, it will have a "*" next to its name.
7. Then enter the command **select volume X** to select the partition you want to mark active and press Enter.
8. Type **inactive** command and press Enter to finish.

```
Administrator: X:\windows\system32\cmd.exe - diskpart
Microsoft Windows [Version 6.1.7601]

X:\Sources>diskpart

Microsoft DiskPart version 6.1.7601
Copyright (C) 1999-2008 Microsoft Corporation.
On computer: MININT-UF02L57

DISKPART> list volume

   Volume ###  Ltr Label          Fs      Type          Size      Status       Info
   -----  -  -  -  -  -  -  -  -
   Volume 0             E  Win7_spl_32  UDF     CD-ROM        4322 MB    Healthy
   Volume 1             C               NTFS    Partition     9 GB      Healthy
   Volume 2             D               NTFS    Partition    10 GB      Healthy

DISKPART> select volume 1

Volume 1 is the selected volume.

DISKPART> inactive

DiskPart marked the current partition as inactive.

DISKPART> _
```

Finally restart the computer and check if the error or not.

Above TipsMake.com has guided you a number of ways to fix Invalid Partition Table error, hope through the article you can successfully overcome errors on your computer. Good luck!

You finished reading the article "**Invalid Partition Table is what error and how to fix it**" edited by the [TipsMake](#) team. We hope this article has provided you with many useful tech tips and tricks. You can search for similar articles on tips and guides. Thank you for reading and for following us regularly.