

# Integrated services in MS SQL Server

Integrated services are used to implement ETL (Extraction, Transform and Load data) and administrator jobs.

Integrated services are used to implement ETL (Extraction, Transform and Load data) and administrator jobs. BIDS (Business Intelligence Studio until 2008 R2 version) and SSDT (SQL Server Data Tools from 2012 later) are the environments for this service.

## SSIS Basic Architecture

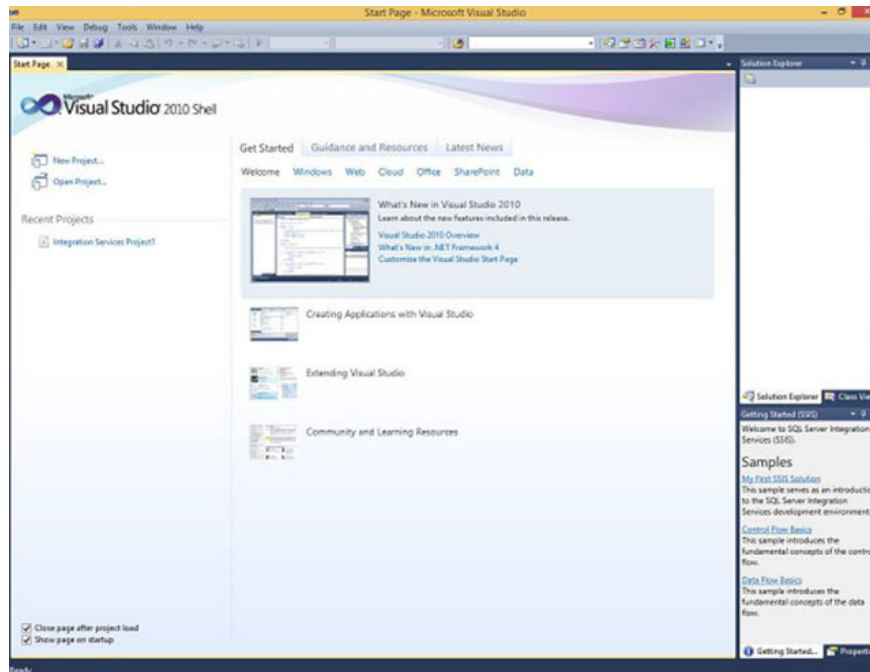
**Solution** (a set of projects) ? **Project** (a set of packages) ? **Package** (a set of tasks for ETL and administrators).

Each package can include components:

1. Control Flow (Containers and Tasks)
2. Data Flow (Source, Transformation and Destination)
3. Event Handler (send message, Email)
4. Package Explorer (see all in 1 package)
5. Parameter (user interaction)

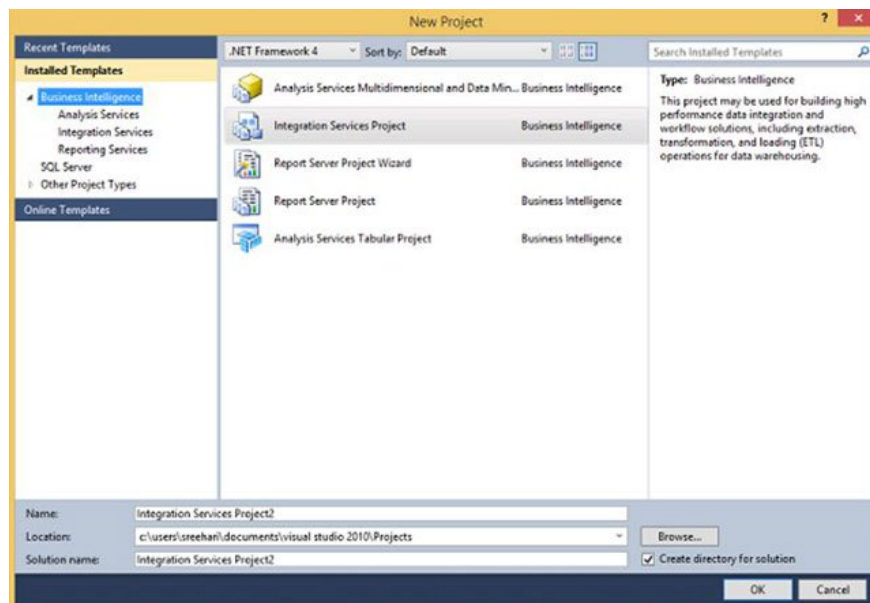
Here are the steps to open BIDS / SSDT.

**Step 1** - Open the BIDS or SSDT from the MS SQL Server program group. The screen below will appear.



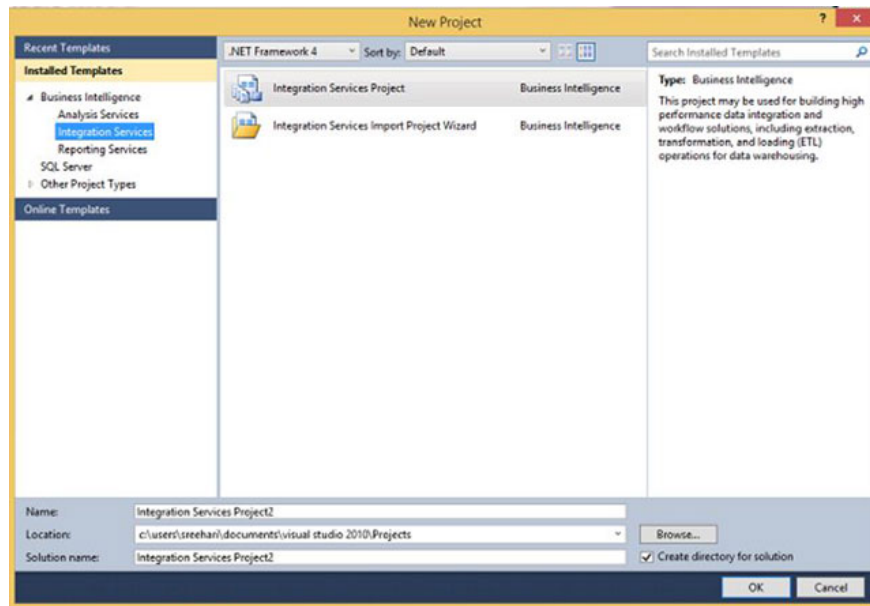
*Opened SSDT screen*

**Step 2** - Go to **File** in the left corner and select **New > Project** to open the screen below.



*Select the new Project*

**Step 3** - Select **Integration Service** under **Business Intelligence** in the upper left corner of the screen above to get the screen below.



*Integration Service opened*

**Step 4** - On the screen above, select the **Integration Services Project** service or the **Integration Services Import Project Wizard** according to your own requirements to create the package.

Previous article: Execution Plans - Execution plan in MS SQL Server

Next lesson: Analysis services in MS SQL Server

You finished reading the article "**Integrated services in MS SQL Server**" edited by the [TipsMake](#) team. We hope this article has provided you with many useful tech tips and tricks. You can search for similar articles on tips and guides. Thank you for reading and for following us regularly.