

Instructions to turn on / off Windows Defender on Windows 10

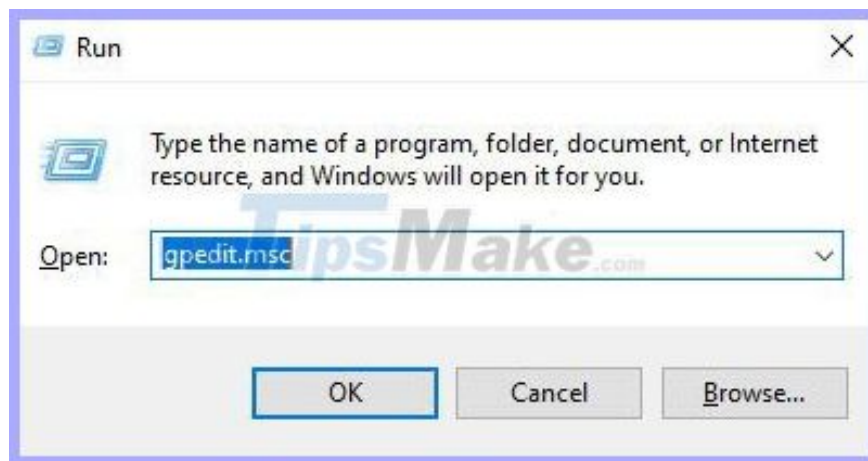
Windows Defender is a free antivirus program built into Windows 10, this software will default to start with the system to protect you from attacks of viruses, spyware, spyware and other types of code. Other toxic.

However, the level of protection of Windows Defender is considered by many experts to be only at a basic level, moreover sometimes this antivirus program mistakenly some software as Virus causing our data to be lost in a way. Unfortunately, many people want to remove / disable Windows Defender to install other antivirus programs.

The difficulty is that Microsoft does not allow completely disable this free antivirus program. Do not be discouraged, because in this article I will guide how to disable it completely 100%.

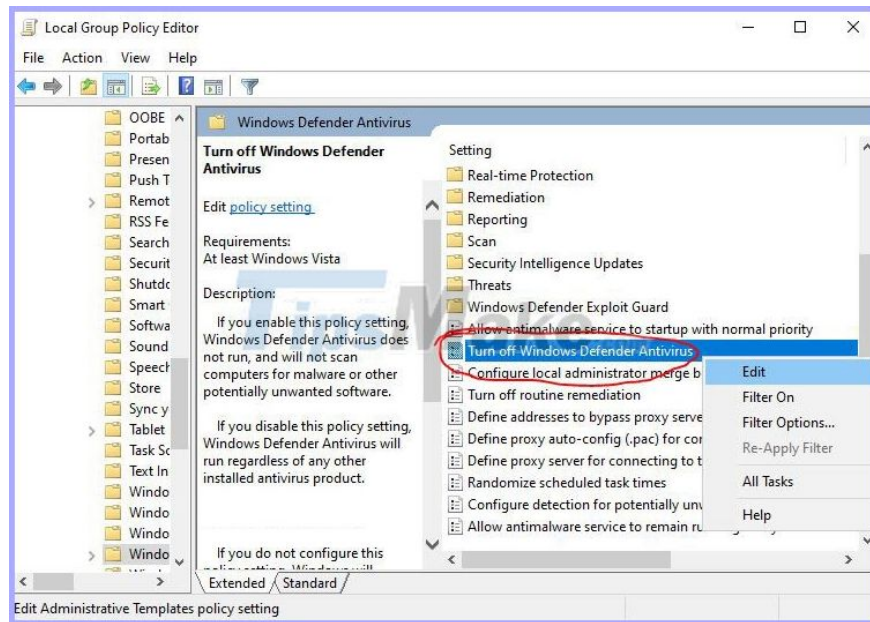
1. Disable Windows Defender with Local Group Policy

Step 1: Windows + R Key combination -> Enter: *gpedit.msc* -> Press **Enter**.

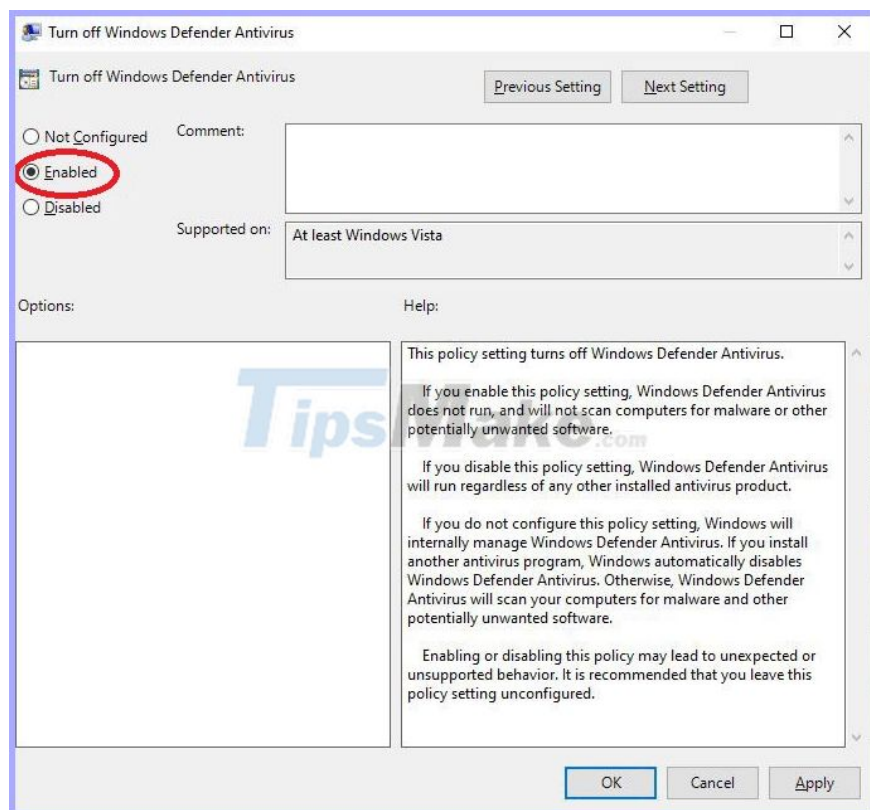


Step 2: In the **Local Group Policy Editor** window , access **Windows Defender** at the link:

Step 3: In the **Setting** section, find and double-click (or right click, click **Edit**) on **Turn off Windows Defender Antivirus**.



Step 4: In **Edit** window -> Select **Enabled** to disable **Windows Defender**.



Step 5: Select **Apply** -> **OK** to complete the process.

Once completed you will still see the Windows Defender icon in the Taskbar, restart your computer to remove this icon.

If you want to undo - undo this process, just modify the **Enabled** option under Turn off Windows Defender -> **Disable** or **Not Configured**.

2. Use the Registry to disable Windows Defender

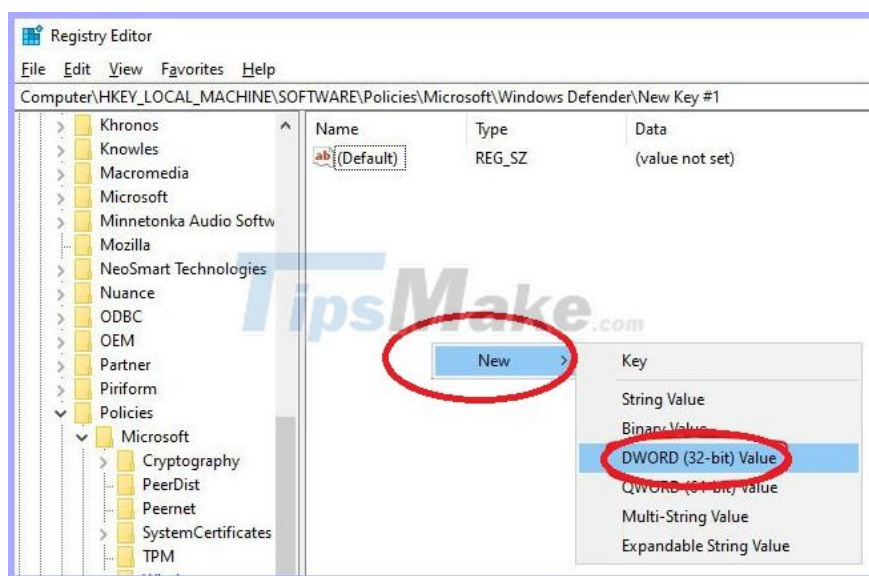
Some versions of Windows 10 do not allow you to access the Local Group Policy Editor, try using the Registry.

Step 1: Press the key combination Windows + R to open the Run window. Type: *regedit* -> Press **Enter**.

Step 2: On the **Registry** window, access the Windows Defender folder as follows:

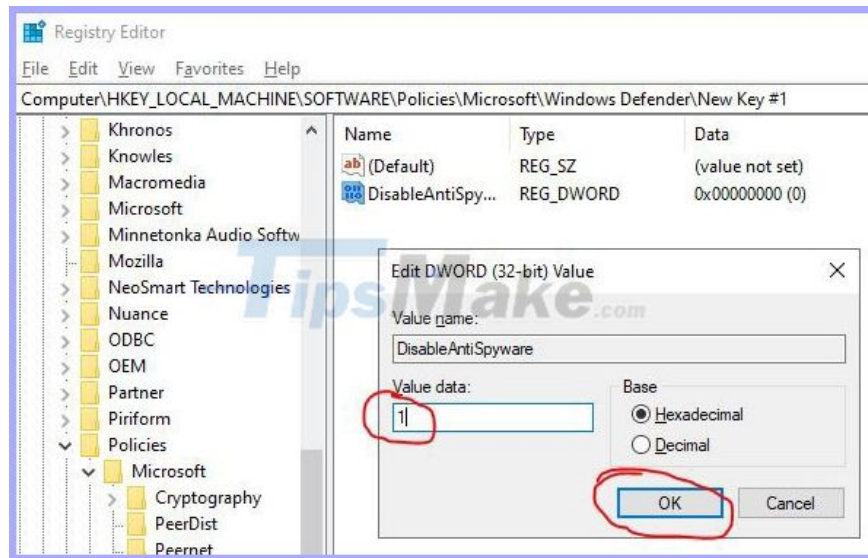
HKEY_LOCAL_MACHINE\SOFTWARE\Policies\Microsoft\Windows Defender

Step 3: Right-click on the wide white space on the right -> Click New => DWORD (32-bit) Value.



Step 4: Name this key: *DisableAntiSpyware*

Step 5: Double click the newly created key -> change the Value data value to 1.



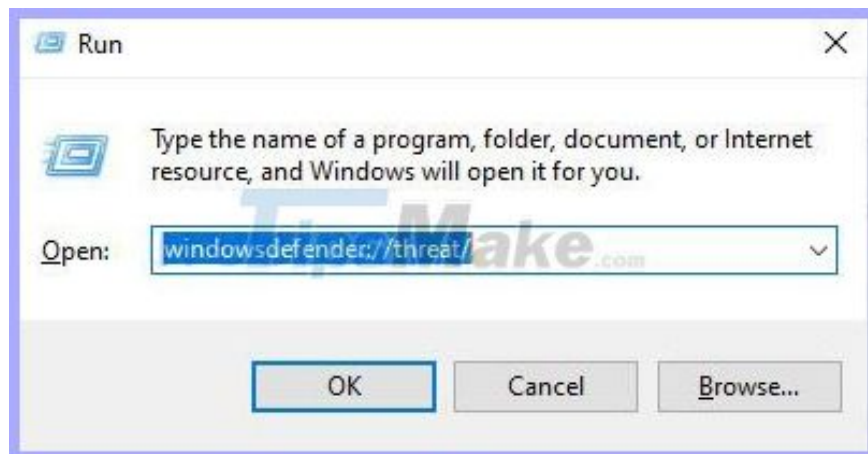
Step 6: Click **OK** -> Restart the computer to finish.

If you want to undo the above process, just delete the DisableAntiSpyware key.

3. Temporarily disable Windows Defender with Settings

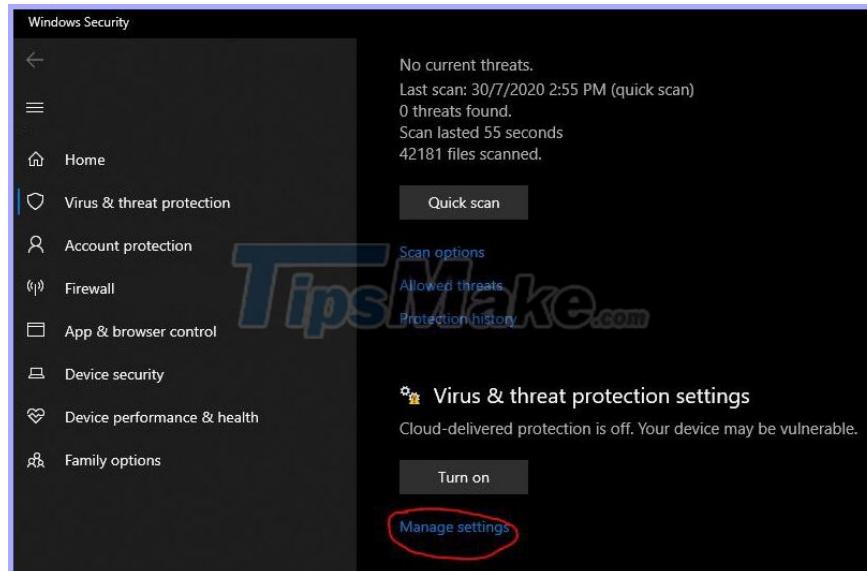
If you've tried the two methods above but it didn't work, use Settings to temporarily disable Windows Defender.

Step 1: Key combination Windows + R. -> Enter: *windowsdefender://threat/*



-> Press Enter.

Step 2: Windows Security window appears. Click **Manage settings** in the **Virus & threat protection settings** section.



Step 3: Features Real-time protection : I switched from **On** to **Off** to disable Windows Defender.



Note that this can only temporarily turn off Windows Defender, after resetting the device, Windows Defender will automatically turn on the Real-time protection feature.

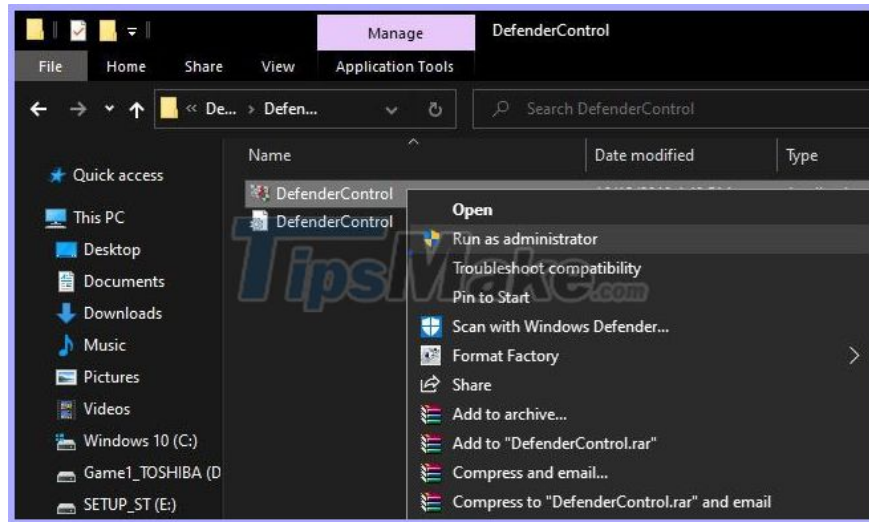
4. Turn on / off Windows Defender using the Defender Control v1.6 software

The above methods have frustrated you or want to find a solution to disable Windows Defender comprehensively we can use the software.

The program that helps disable Windows Defender is very much, in this article, **Freetuts** will share for you the **Defender Control v1.6** application to quickly turn on and off Windows Defender.

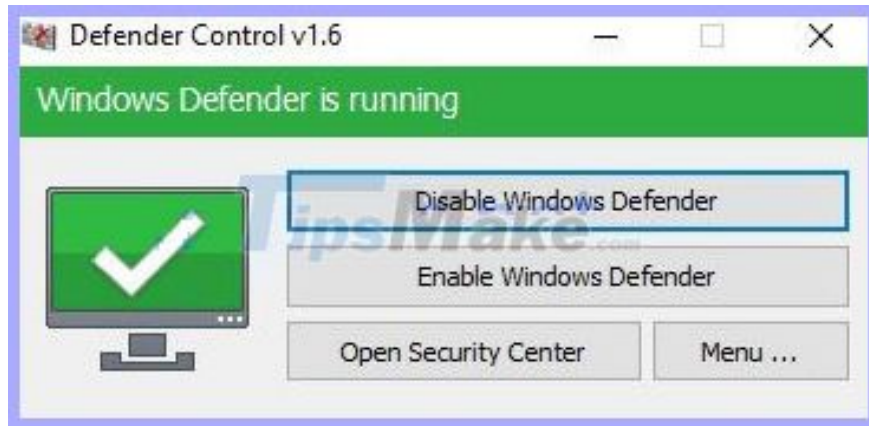
How to use the Defender control:

Download **Defender Control v1.6** (Download link [here](#)) -> extract it then run the program.



You can see the status of Windows Defender on the program interface:

1. Green : Windows Defender is running -> We can click on DIsable Windows Defender to disable it.



2. Red: Windows Defender is turned off.



To turn on Windows Defender again, just click **Enable Windows Defender** . Very simple fast and convenient.

You finished reading the article "**Instructions to turn on / off Windows Defender on Windows 10**" edited by the [TipsMake](#) team. We hope this article has provided you with many useful tech tips and tricks. You can search

for similar articles on tips and guides. Thank you for reading and for following us regularly.
