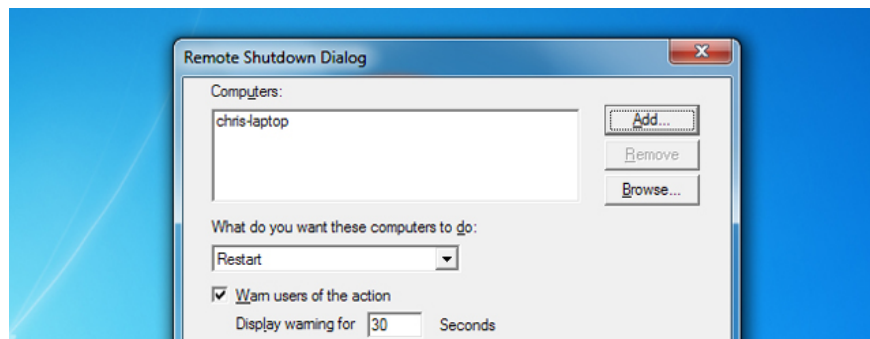


# Instructions to turn off and restart the remote computer on Windows

Windows operating system contains the utility `Shutdown.exe`, a simple utility to shut down or restart the computer remotely via the local network. To use the `Shutdown.exe` utility, you must first configure the PCs that users want to shut down or restart remotely.

Windows operating system contains the utility `Shutdown.exe`, a simple utility to shut down or restart the computer remotely via the local network. To use the `Shutdown.exe` utility, you must first configure the PCs that users want to shut down or restart remotely.

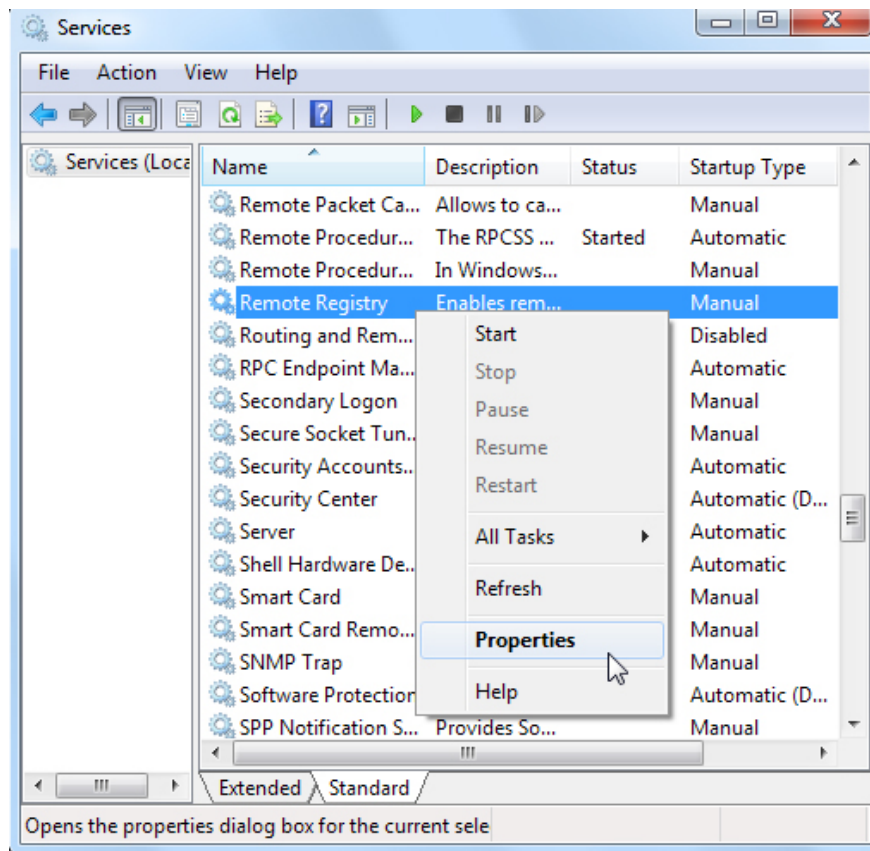
After you have configured the PC, users can use the graphical interface or command line interface to restart the PC from another Windows machine. You can even turn off or restart the PC remotely from a computer running **Linux**.



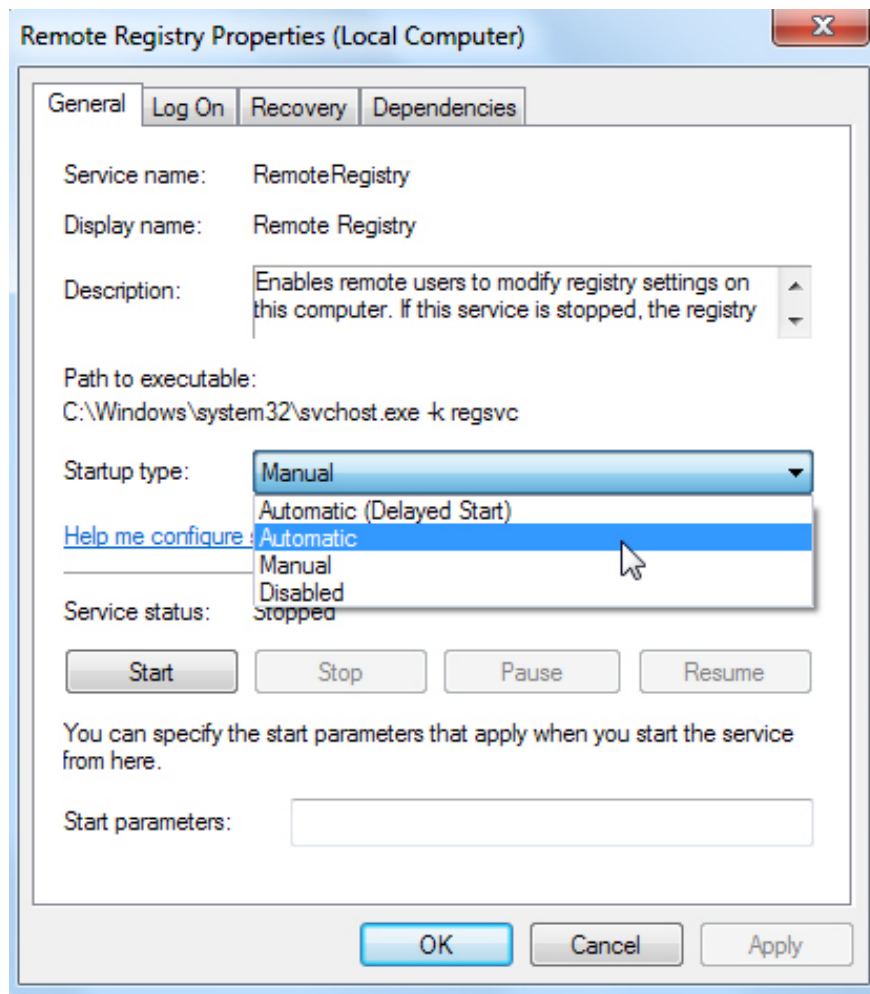
## Configuration

Activate the '`remote registry`' service on PCs that want remote control off. This service is not enabled by default. Launch *Services control panel* on the machine you want to turn off remotely by clicking **Start**, typing `services.msc` into *Start menu* and pressing `Enter`.

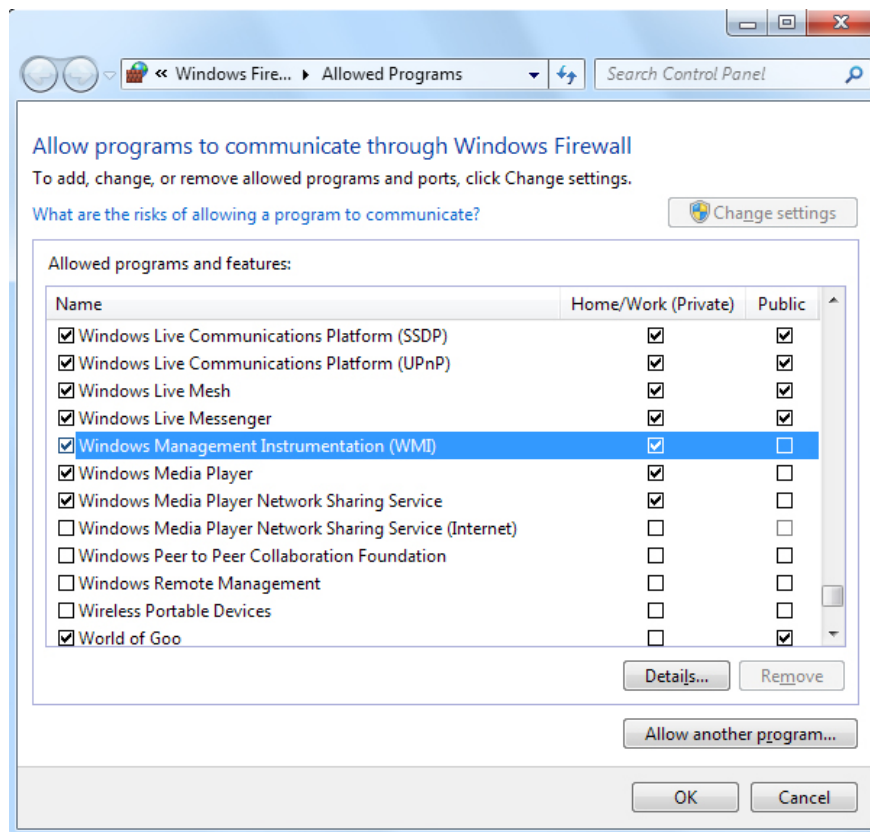
Find the service '`Remote Registry`' in the list, right-click it and select **Properties**.



From the **Properties** window, set **Startup type** to *Automatic* and click *Start* to launch the service.



Next, the user must open the port in the computer firewall. Click **Start** , type ' *Allow a program* ' and press *Enter* . In the window that appears, click **Change settings** . Scroll down and activate the ' *Windows Management Instrumentation* ' exception.



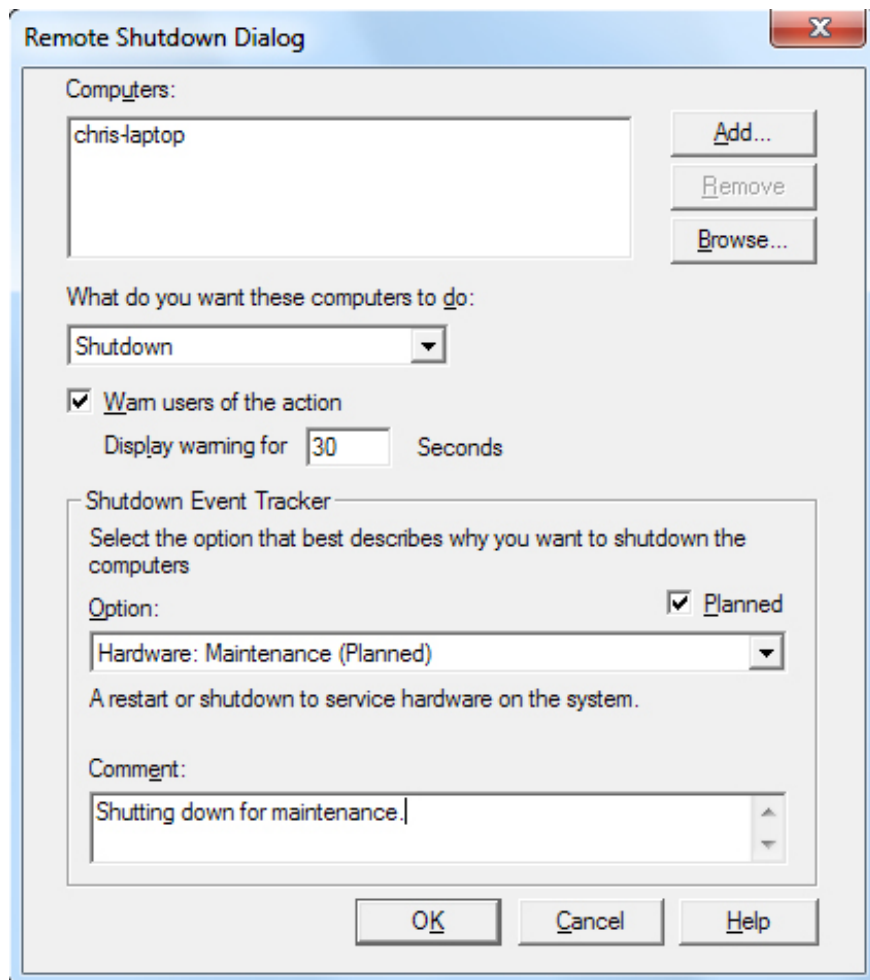
User accounts must also have administrative rights on the remote computer. Otherwise, the shutdown command will fail due to lack of permissions.

## Turn off the remote computer

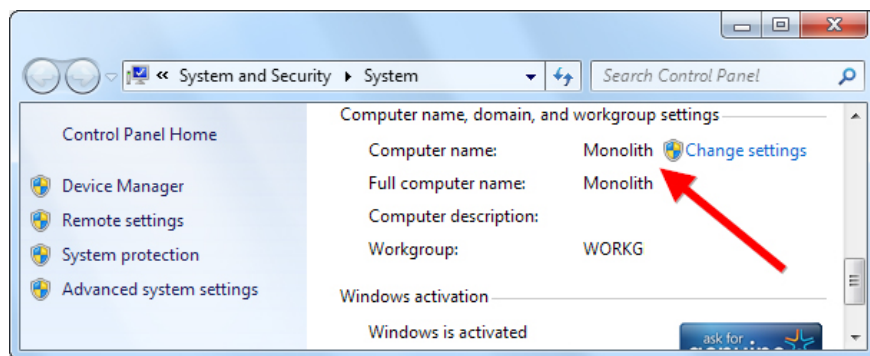
To turn off the remote computer, launch the **Command Prompt** window on the remote computer (press **Start** , type *Command Prompt* and press *Enter* ). Type the following command into the *command prompt* window:

Shutdown / i

From the **Remote Shut down Dialog** window, users can add one or more computers and specify whether to restart or shutdown or not. Select a warning for the user in the **Option** section.

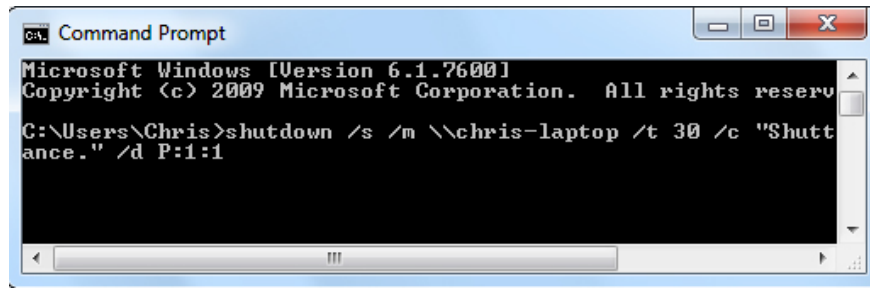


If you are unsure about the name of the remote machine, click **Start** on the remote machine, right-click *Computer* in **Start menu** and select **Properties** . We will see the host name.



Users can also use a command instead of the graphical interface. This is an equivalent statement:

```
shutdown / s / m chris-laptop / t 30 / c 'Shutting down for maintenance.' / d P: 1: 1
```



```
Command Prompt
Microsoft Windows [Version 6.1.7600]
Copyright (c) 2009 Microsoft Corporation. All rights reserved.

C:\Users\Chris>shutdown /s /m \\chris-laptop /t 30 /c "Shut
ance." /d P:1:1
```

## Turn off from a computer running Linux

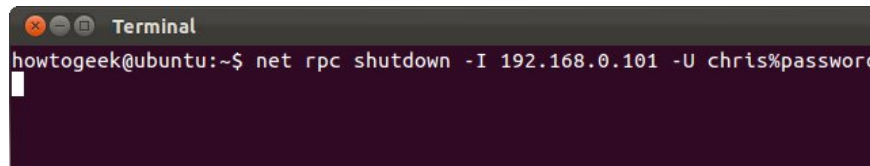
It is also possible to turn off the computer from a **Linux** machine. This requires the package ' *samba* ' to be installed. Install this package on **Ubuntu** with the following command:

```
sudo apt-get install samba-common
```

Then, use the command:

```
net rpc shutdown -I ip.address -U user% password
```

Replace ' *ip.address* ' with the Windows IP address, ' *user* ' with the username of an account with administrative rights on the remote machine, and ' *password* ' with the password of the *user account* ( *user account* ). Add the option ' *-r* ' to the command if you want your computer to reboot instead of shutting down.



```
Terminal
howtogeek@ubuntu:~$ net rpc shutdown -I 192.168.0.101 -U chris%password
```

**Remote desktop** utility on *Win7* or *Win Vista* also allows remote machine access to shut down or restart. But *shutdown.exe* is a faster and more efficient way for system administrators. Administrators can turn off or restart multiple machines at a faster time than login and manipulate on each machine.

You finished reading the article "**Instructions to turn off and restart the remote computer on Windows**" edited by the [TipsMake](#) team. We hope this article has provided you with many useful tech tips and tricks. You can search for similar articles on tips and guides. Thank you for reading and for following us regularly.