

# Instructions to scan the network port with Advanced Port Scanner

Advanced port scanner is a small and powerful tool useful for scanning network ports. This free network port scanning tool scans network devices and makes it easy to find open ports quickly.

Advanced port scanner is a small and powerful tool useful for scanning network ports. This free network port scanning tool scans network devices and makes it easy to find open ports quickly. It even takes versions of the programs that are running on these specified ports.

## Scan the network port with Advanced Port Scanner

1. Features and characteristics of Advanced port scanner
2. System requirements
3. How to use it?
4. Price
5. Screen shot illustrated

## Features and characteristics of Advanced port scanner

Advanced Port Scanner comes with the following features:

1. It is supported by multi-threaded scanning technology, that is, it can scan hundreds of ports in seconds.
2. This is a small program, only requires very little space on the user's computer.
3. It can also scan predefined port ranges.
4. Provides information about ports and network devices.
5. Provides easy access to found resources such as HTTP, HTTPS, FTP and shared folders.
6. Port scanning is fully configurable.
7. You can choose to name the list of ports you are accessing to scan.
8. Run commands on a remote computer with ping, tracert, telnet and SSH.
9. Allow remote access to computers with RDP and Radmin
10. Provides the flexibility of Wake-on-LAN and remote computer shutdown
11. Scan results can be exported to .xml, .html and .csv formats.
12. No manual installation is required because you can launch it directly from the installer.
13. You can create favorite lists of computers you use regularly.
14. Simplify the search for local networks
15. Comes with a friendly and intuitive interface.
16. Ideal for everyone, regardless of technical knowledge or platform

# System requirements

Advanced Port Scanner works well in the following systems:

1. Windows 7, 98, ME, NT, XP, 95, 2003 and Vista.
2. A separate tool exists for Mac OS.

## How to use it?

One of the highlights of Advanced Port Scanner is its intuitive user interface. As soon as you open the program, the main window will prompt you to enter the scan target. This can be a single IP address or the entire range. The same applies to ports, but in addition to scanning, this tool also comes with a default port list that includes many common ports used by Windows.

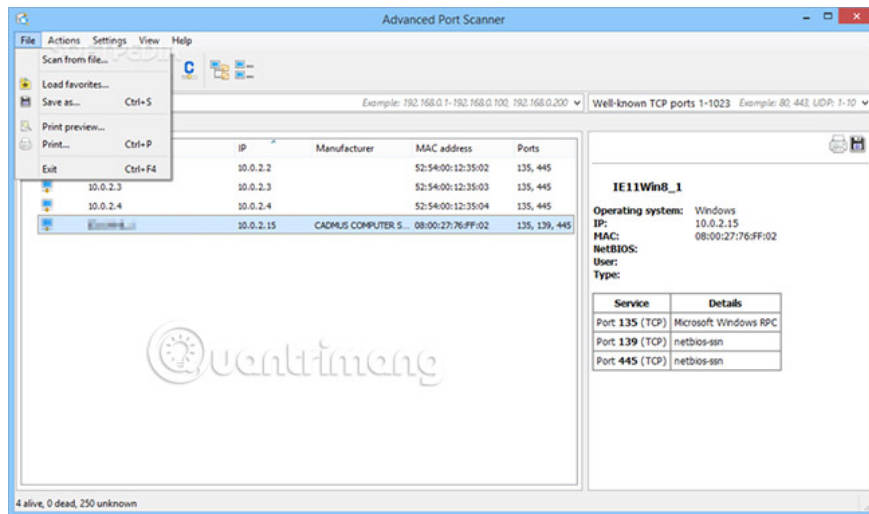
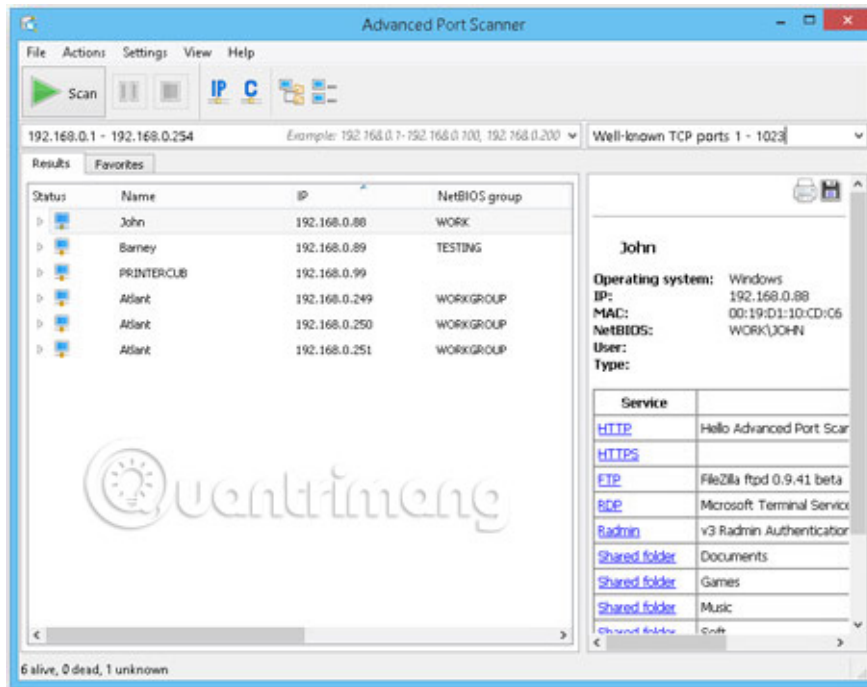
When you enter the scan target, Advanced Port Scanner will scan them. Each scanned target will display on the right of the main window in a dedicated control panel. The information displayed will include the number of ports scanned, opened and closed.

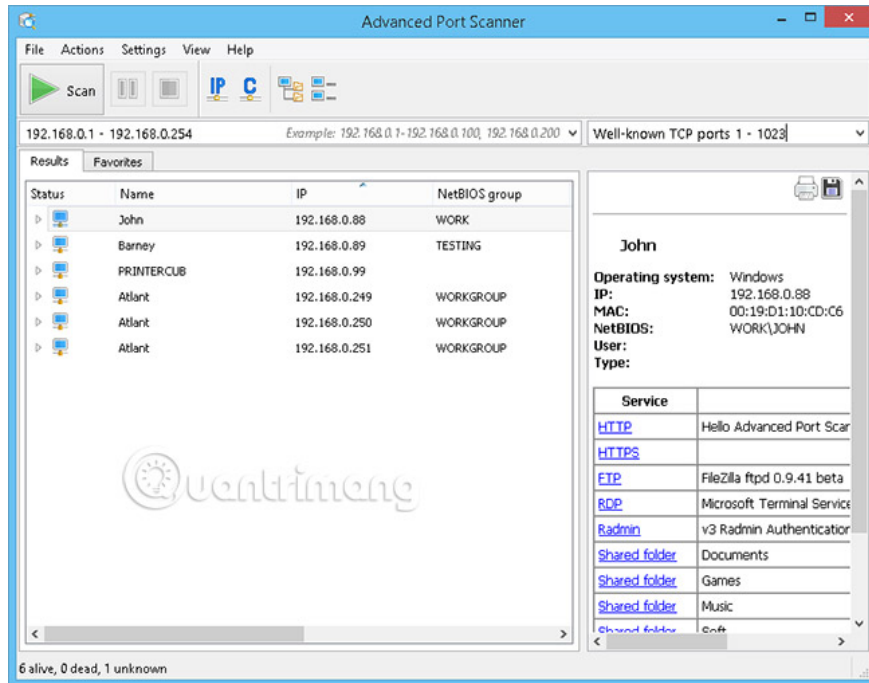
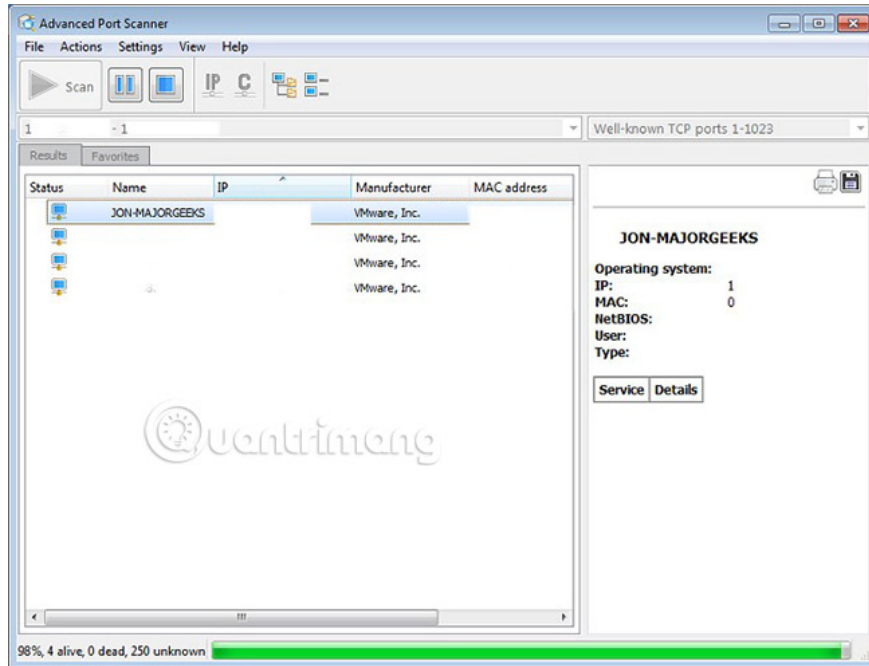
Besides the main window, Advanced Port Scanner also comes with a configuration screen that has some advanced options. In this screen, you can set the maximum number of threads, prioritize threads, scan port timeouts and even optionally ping computers before scanning them.

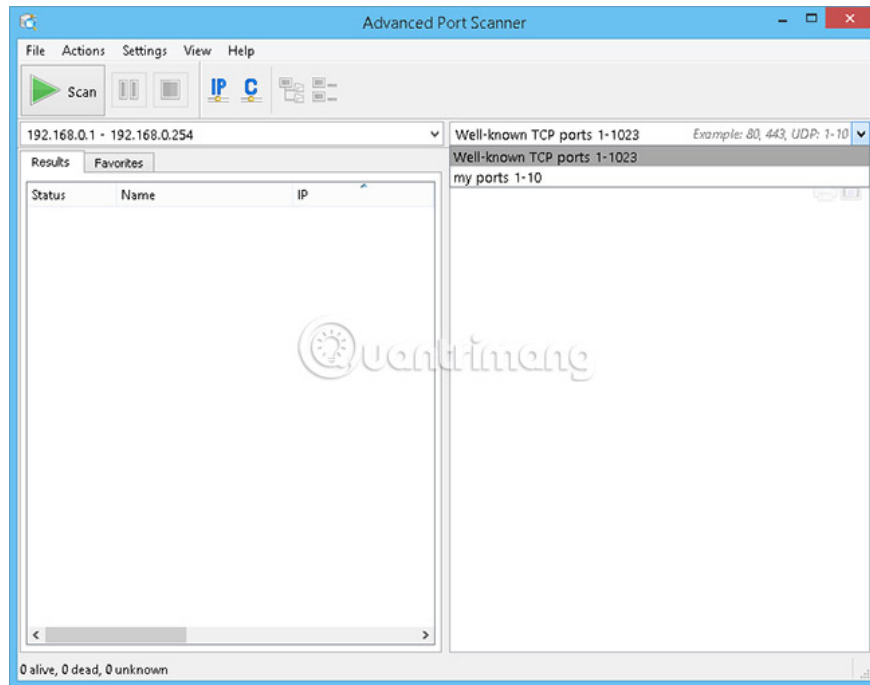
## Price

1. Advanced Port Scanner is 100% FREE software.
2. [Link download Advanced Port Scanner.](#)

## Screen shot illustrated







See more:

1. Some free "hack" tools
2. 6 simple steps to install Port Forwarding on the Router
3. Instructions for installing diver for Intel graphics card on Surface Book

You finished reading the article "**Instructions to scan the network port with Advanced Port Scanner**" edited by the [TipsMake](#) team. We hope this article has provided you with many useful tech tips and tricks. You can search for similar articles on tips and guides. Thank you for reading and for following us regularly.