

# Instructions to reset Internet Explorer, set default settings for IE 11

If you encounter an issue that appears while browsing on IE means it's time to reset the browser, return Internet Explorer to its original default settings to fix the error.

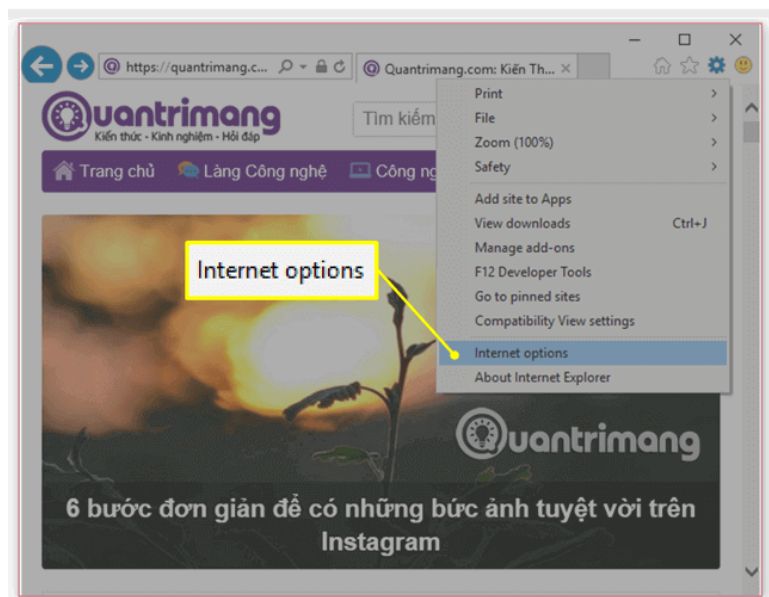
After a period of use, Internet Explorer will become slow, hang, automatically reload tabs, appear minor errors when using . If encountering problems that means it's time for you to reset the browser, return Internet Explorer to its original default settings to fix the error.

In this tutorial, TipsMake.com will learn about steps to reset Internet Explorer to the default settings on your computer. Stay tuned!

## Instructions to reset Internet Explorer

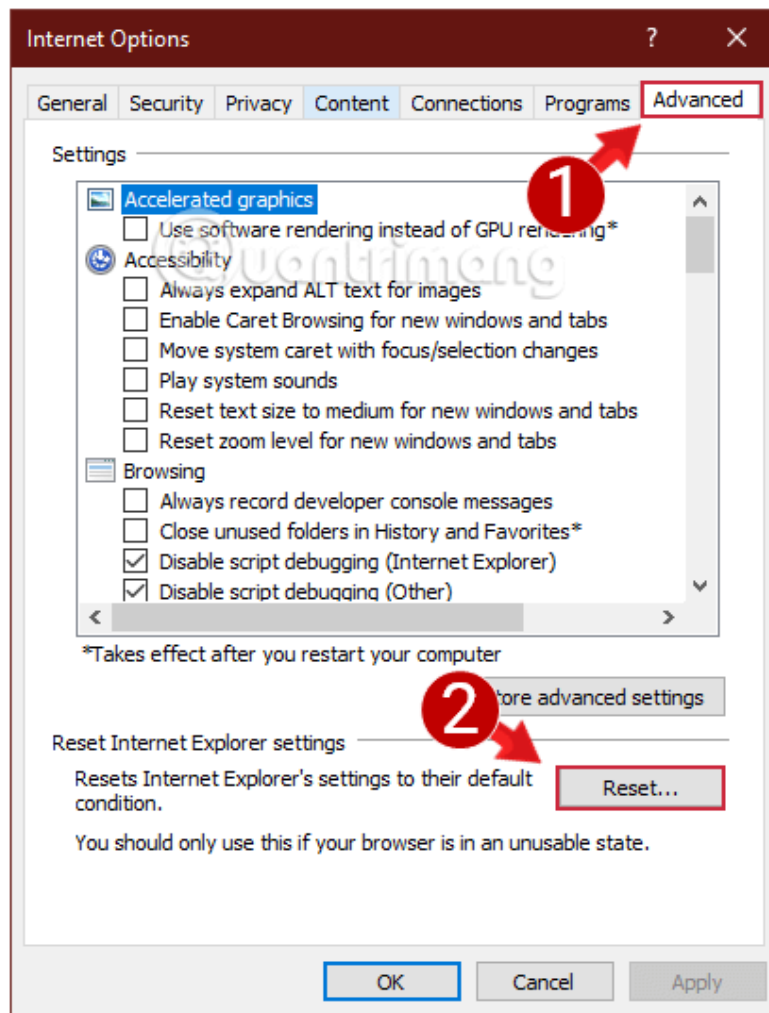
In the tutorial, TipsMake.com is using the latest version of IE11 to implement. To return **IE11** to its original state on Windows, follow these steps:

**Step 1:** Open **Internet Explorer** , click the **gear** icon in the top right corner of the browser window and select **Internet Options** in the drop down menu.



Open Internet Explorer and select Internet Options

**Step 2:** The **Internet Options** dialog box of IE will be displayed, switch to the **Advanced** tab and select **Reset** at the bottom.



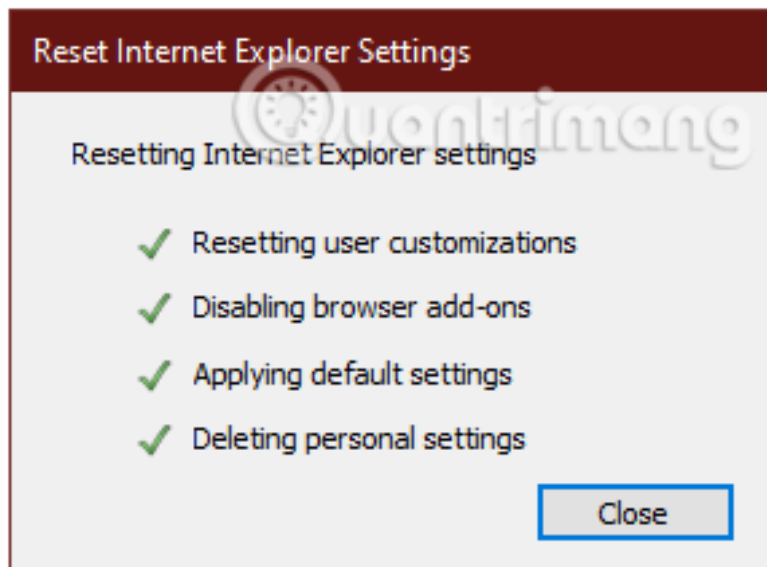
Switch to the Advanced tab and select Reset

**Step 3:** Display the **Reset Internet Options Settings** dialog box , click **Delete personal settings** and then select **Reset** .



Click Delete personal settings then select Reset

**Step 4:** Wait a few seconds for Internet Explorer to complete the process of restoring the browser to the default, select **Close** in the **Reset Internet Options Settings** dialog box that appears, then restart the PC to apply the changes.



Select Close and then restart the PC to apply the changes

**Note:** After performing this operation, you will not be able to restore IE to its previous state, all settings, Internet Explorer data will be lost after reset.

It is done! Now your browser has been restored to factory settings. Surely you will experience it a lot faster than before.

Good luck!

See more:

1. How to set a default browser when opening any link on a computer
2. How to block Internet Explorer from accessing the Internet
3. How to remove Add-ons (Extensions) on Chrome, Firefox and some other browsers
4. How to enter saved passwords in Internet Explorer into Edge browser

You finished reading the article "**Instructions to reset Internet Explorer, set default settings for IE 11**" edited by the [TipsMake](#) team. We hope this article has provided you with many useful tech tips and tricks. You can search for similar articles on tips and guides. Thank you for reading and for following us regularly.