

Instructions to quickly change TP-LINK Archer C2 Wifi password

TP-LINK Archer C2 Wifi is one of the popular devices, supporting stable connections for families and businesses. Changing passwords regularly helps increase security, avoiding unauthorized access. If you don't know how to do it, let's explore the instructions below with TipsMake.

Changing TP-LINK Archer C2 Wifi password is very simple, anyone can do it easily.

Prepare before changing password

- Check the connection between the computer and the modem using a network cable.
- Find the IP address and login account on the sticker behind the modem.

How to change TP-LINK Archer C2 Wifi password

Step 1: Connect the device to the modem

Before changing the password, connect your laptop or computer to the TP-LINK Archer C2 modem using a network cable. If the system has multiple modems, unplug the other network cables to avoid confusion.



Step 2: Find your login information

Turn the modem over to the back to find the default IP address, username, and password. Typically, the access address is 192.168.1.1 or 192.168.0.1.



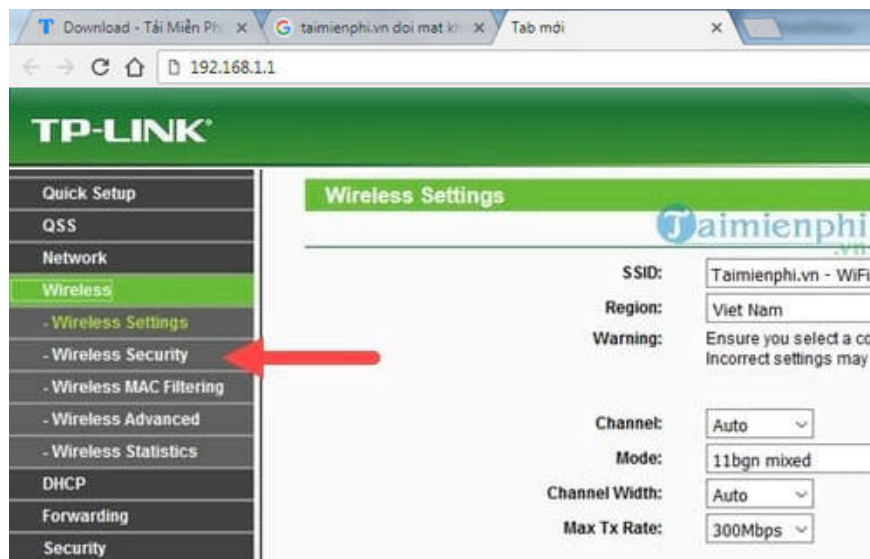
Step 3: Log in to the modem management page

- Open web browser, enter modem IP address.
- Log in with admin/admin account (or information on modem).



Step 4: Access Wifi security settings

- In the management interface, go to Wireless > Wireless Security.
- Here, you will see security options such as WEP, WPA, WPA2.



Step 5: Set a new password

- Select WPA2 for the highest level of security.
- Enter a new password in the Password box (should be 8 characters or more, including letters, numbers and special characters).
- Click Save to save the settings.

Wireless Security Taimienphi.vn

Disable Security

WEP

Type:

WEP Key Format:

Key Selected	WEP Key	Key Type
Key 1: <input type="radio"/>	<input type="text"/>	<input type="text" value="Disabled"/>
Key 2: <input type="radio"/>	<input type="text"/>	<input type="text" value="Disabled"/>
Key 3: <input type="radio"/>	<input type="text"/>	<input type="text" value="Disabled"/>
Key 4: <input type="radio"/>	<input type="text"/>	<input type="text" value="Disabled"/>

WPA/WPA2

Version:

Encryption:

Radius Server IP:

Radius Port: (1-65535, 0 stands for default port 1812)

Radius Password:

Group Key Update Period: (in second, minimum is 30, 0 means no update)

WPA-PSK/WPA2-PSK

Version:

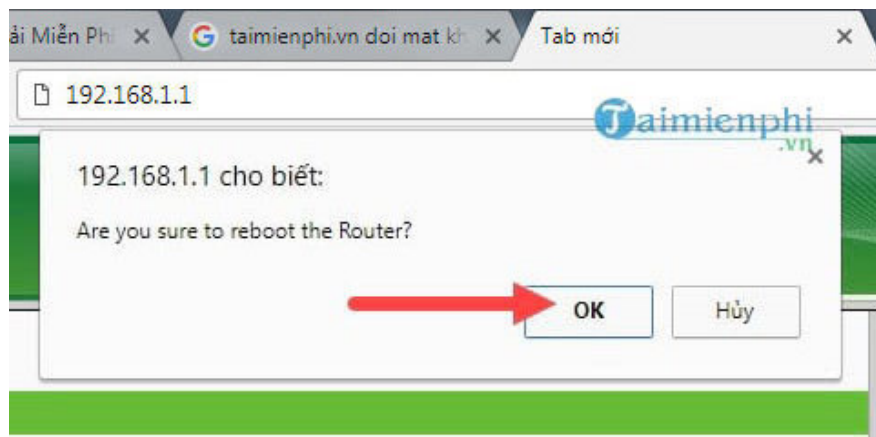
Encryption:

PSK Password:

(You can enter ASCII characters between 8 and 63 or Hexadecimal characters between 8 and 64.)

Group Key Update Period: (in second, minimum is 30, 0 means no update)

Step 6: Restart the modem



Step 7: After saving the new password, the modem will ask to reboot. Scroll down to the bottom of the page, click [Click here](#) to complete the process.



The above instructions not only help you change the TP-LINK Archer C2 Wifi password but can also be applied to other TP-LINK modem lines thanks to the similar management interface. If you use the TP-LINK TL-WR845N device or other TP-LINK modems, please refer to how to **change the TP-LINK TL-WR845N Wifi password** to perform this operation easily.

You finished reading the article "**Instructions to quickly change TP-LINK Archer C2 Wifi password**" edited by the [TipsMake](#) team. We hope this article has provided you with many useful tech tips and tricks. You can search for similar articles on tips and guides. Thank you for reading and for following us regularly.