

Instructions to pass Anh Hai's Pho Shop chase

Brother Hai's Pho Restaurant not only makes players tense with horror events but also surprises with high-speed action segments.

Brother Hai's Pho Restaurant not only makes players tense with horror events but also surprises with high-speed action segments. The Exciter motorbike control feature is the key for Anh Hai to survive dramatic chases, escape from criminal gangs and achieve True Ending.

This article will guide you in detail on how to master this special control mechanism and defeat the Exciter riders in the game. Remember that this is when the Bo Doi's juniors are chasing you, not when the two Exciter dog thieves come to visit "Mr. Gold". Remember to download Pho Anh Hai APK , there is now an Android version.

I. Analysis of A/D Bike Control mechanism



Controls A/D Bike Control is a special Game Play mechanism, only activated in climactic situations, requiring quick reflexes.

1. Activation timing and purpose

1. **Timing:** This feature is automatically activated when the game switches to **Cinematic Cutscenes** , usually when Anh Hai gets on a vehicle (bicycle, motorbike) to escape from the pursuit of Bo Doi's juniors,

specifically here the guys riding Exciter holding pig spears.

2. **Purpose:** Test the player's reflexes, forcing them to control the car to avoid obstacles, such as vehicles, helicopters, attacks. on the way.

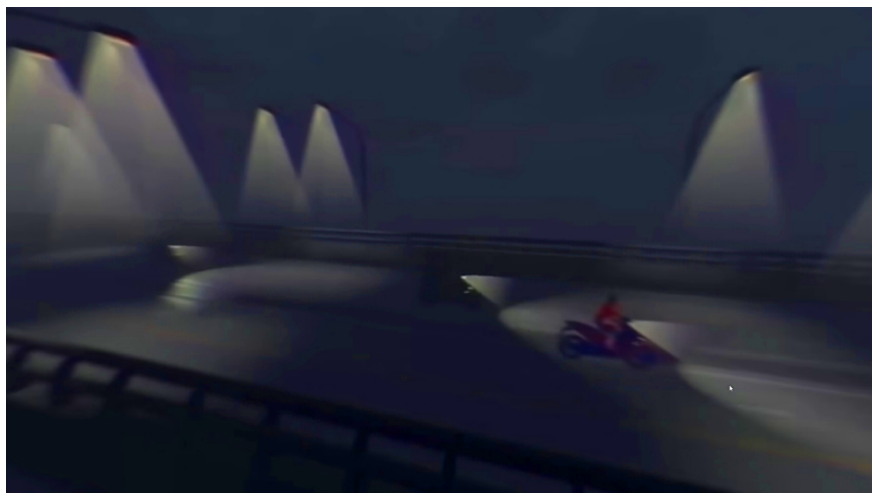


2. Main control keys

Unlike the regular movement controls (WASD), Bike Control focuses on horizontal movement:

1. **A:** Control the car to turn **left** .
2. **D:** Control the car to turn **right** .
3. **Shift Run:** While it can be used to run, in this segment the Shift key can act as a **temporary speed boost** or **perform a quick dodge** .
4. **Left Click** to throw the card.

II. Survival tactics in the chase



Mastering A/D Controls requires precision. Here are some strategies to help you get through this crucial action segment:

1. Press and release technique

1. **Focus on Reflexes:** Instead of holding down the A or D keys, get into the habit of **tapping and releasing** the control keys quickly. Tapping and releasing helps the car move to another lane decisively and precisely, avoiding over-traveling and colliding with obstacles on the opposite side. But you also need to hold down if you need to pass a large obstacle like a public vehicle.
2. **Lane Prediction:** Don't just look at the current obstacle. Look far ahead to **predict the** next empty lane and prepare your vehicle's position.

2. Remotely identify and memorize the sequential position of obstacles

1. The action sequences in *Anh Hai's Pho Shop* often feature **fixed obstacle patterns**.
2. **Tip:** If you fail, don't get discouraged. Replay **the level** and focus on memorizing the order in which the obstacles (trucks, pedestrians, helicopters) appear. Your next playthrough will be more of a test of your memory and reflexes than a random challenge.

3. Use the Shift key and throw cards



1. Use **Shift** deliberately: In some emergency situations, pressing Shift can help you increase your speed and escape enemy range/pursuit faster.
2. **Sensitivity:** If it's too difficult to control, try adjusting the game's **Mouse Sensitivity** to a slightly lower level, this sometimes improves vehicle control.
3. Remember, when you see the Godfather's minions about to attack, throw your card at them. This will hurt them and make them unable to attack you.

III. Why is this scene of chasing away Bo Doi's juniors important?

This chase is not only a Gameplay challenge but also a plot point:

1. **The Key to Unlocking the True Ending:** Successfully completing this action stage (usually the end of **Day 3**) is required to achieve **the True Ending ("Silent Feet")** – where Brother Two activates the trap and destroys the criminal organization.



1. **Identity Confirmation:** This segment is the clearest evidence that Anh Hai is not an ordinary pho restaurant owner, but an **investigative officer with professional action skills**. Enough to deal with the dangerous juniors of Bo Doi.

IV. Frequently Asked Questions about this chase (FAQ)



What is the mistake of failing the chase repeatedly?

1. The most common mistake is **holding down the A/D key** instead of pressing and releasing it, which leads to the car losing control and crashing. Additionally, you may have missed using the **Shift** key to accelerate at the right time.

Q: If you fail the Bike Control stage, what Ending will you get?

1. Failure at the climactic action usually results in a **Bad Ending** ("There Will Be Dogs to Pay") or a variation of **the Normal Ending** , where Brother Two fails to complete the mission and suffers negative consequences.

Q: Can I change the A/D Bike Control keys?

1. This depends on the game settings. Most indie games like *Anh Hai's Pho Shop* have the option to remap keys. You should check **Controls/Settings** in the Pause (Tab/Esc) menu.

You finished reading the article "**Instructions to pass Anh Hai's Pho Shop chase**" edited by the [TipsMake](#) team. We hope this article has provided you with many useful tech tips and tricks. You can search for similar articles on tips and guides. Thank you for reading and for following us regularly.