

Instructions to join the domain on Windows 10

Adding domains on Windows 10 is very simple. This article will guide you step by step to join the domain on Windows 10 using GUI and PowerShell.

Windows 10 is a great consumer operating system with many useful features for end users, but it also provides a lot of functions that business users love. Business-ready operating systems are usually part of the Active Directory domain. Like any Windows operating system after Windows NT, Windows 10 can easily be added as a domain member. In this article, we will use GUI and PowerShell to join the domain (join domain) on a Windows 10 computer through the graphical interface as well as via the command line.

First, to add a domain to a Windows 10 computer, you need to ensure some conditions. Firstly, you will need to have a domain name to connect. This requires at least one Active Directory domain controller on Windows Server 2003 or higher, this is not a problem for most businesses. In addition, you need to have a user account that is a member of the domain. By default, user accounts can add up to 10 computers to the domain. And finally, the computer must use Windows 10 Professional or Enterprise version. Other Windows 10 user versions cannot be added as domain members.

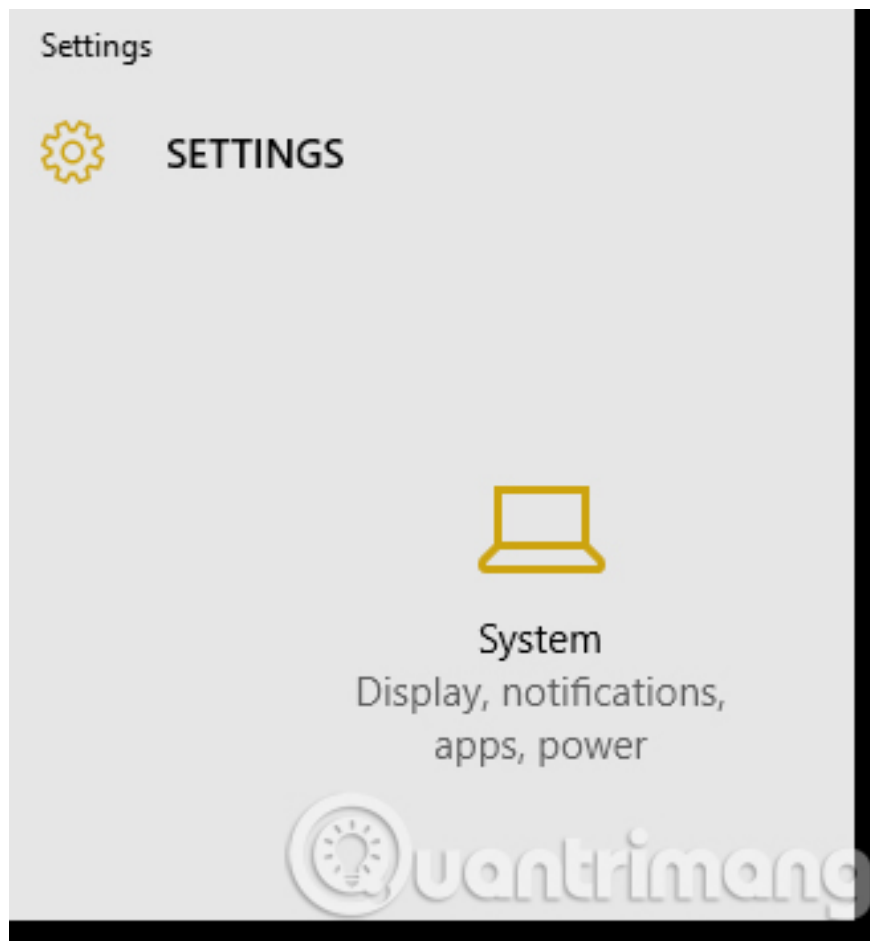
How to join the domain on Windows 10

1. Method 1: Join the domain on Windows 10 using the GUI
2. Method 2: Join the domain on Windows 10 using PowerShell

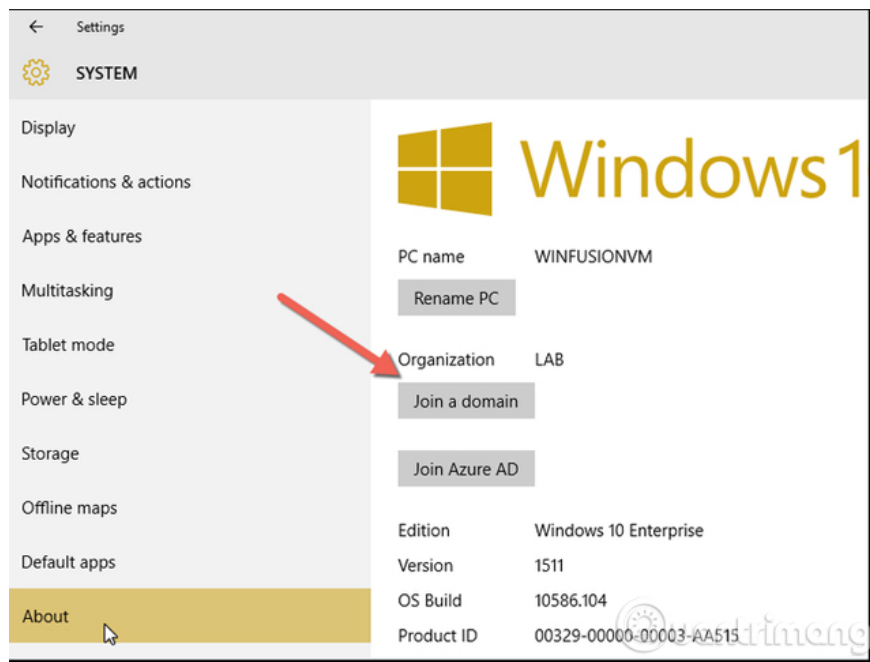
Method 1: Join the domain on Windows 10 using the GUI

The first method is to add domains to Windows 10 via a graphical interface.

Step 1: To do this, you need to go to **Settings** by clicking the search bar and typing **Settings** . On the Settings screen, click **System** .



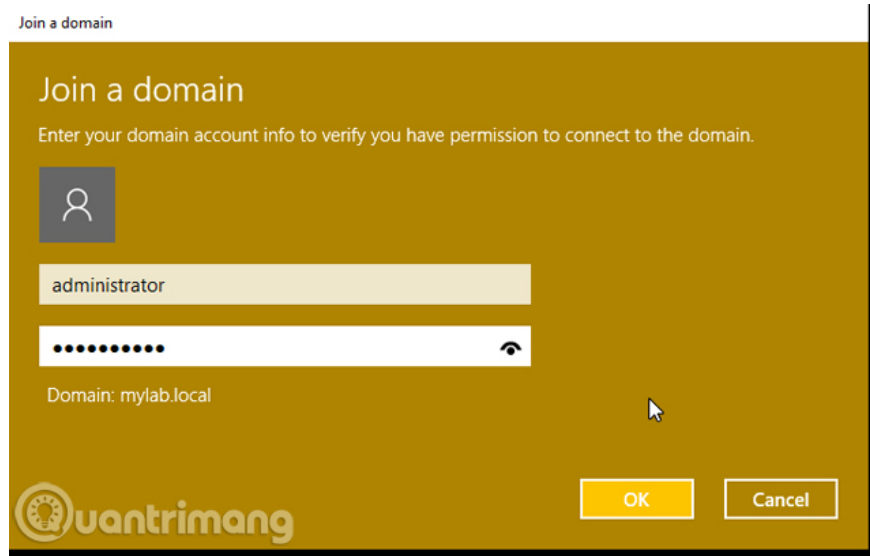
Step 2: Next, click **About** and then go to **Join a domain** button .



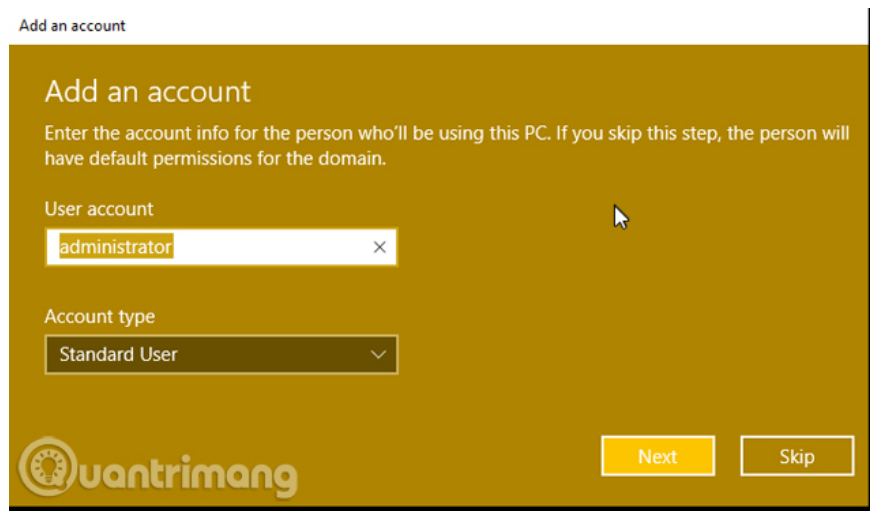
Step 3: From here specify the domain name you want to join.



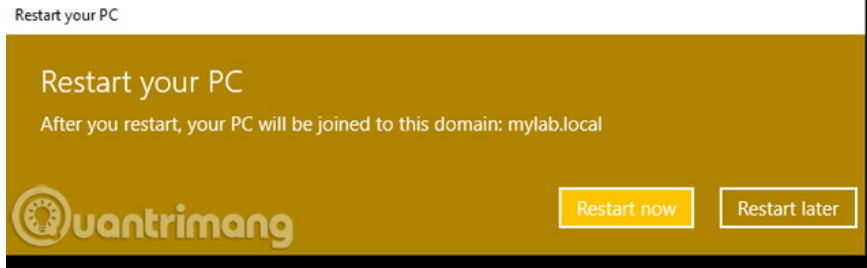
Step 4: Then, specify the username that has the right to add the computer to the domain and click **OK** .



Step 5: After that, you can specify the user who has the right to use this computer. (This step is optional)



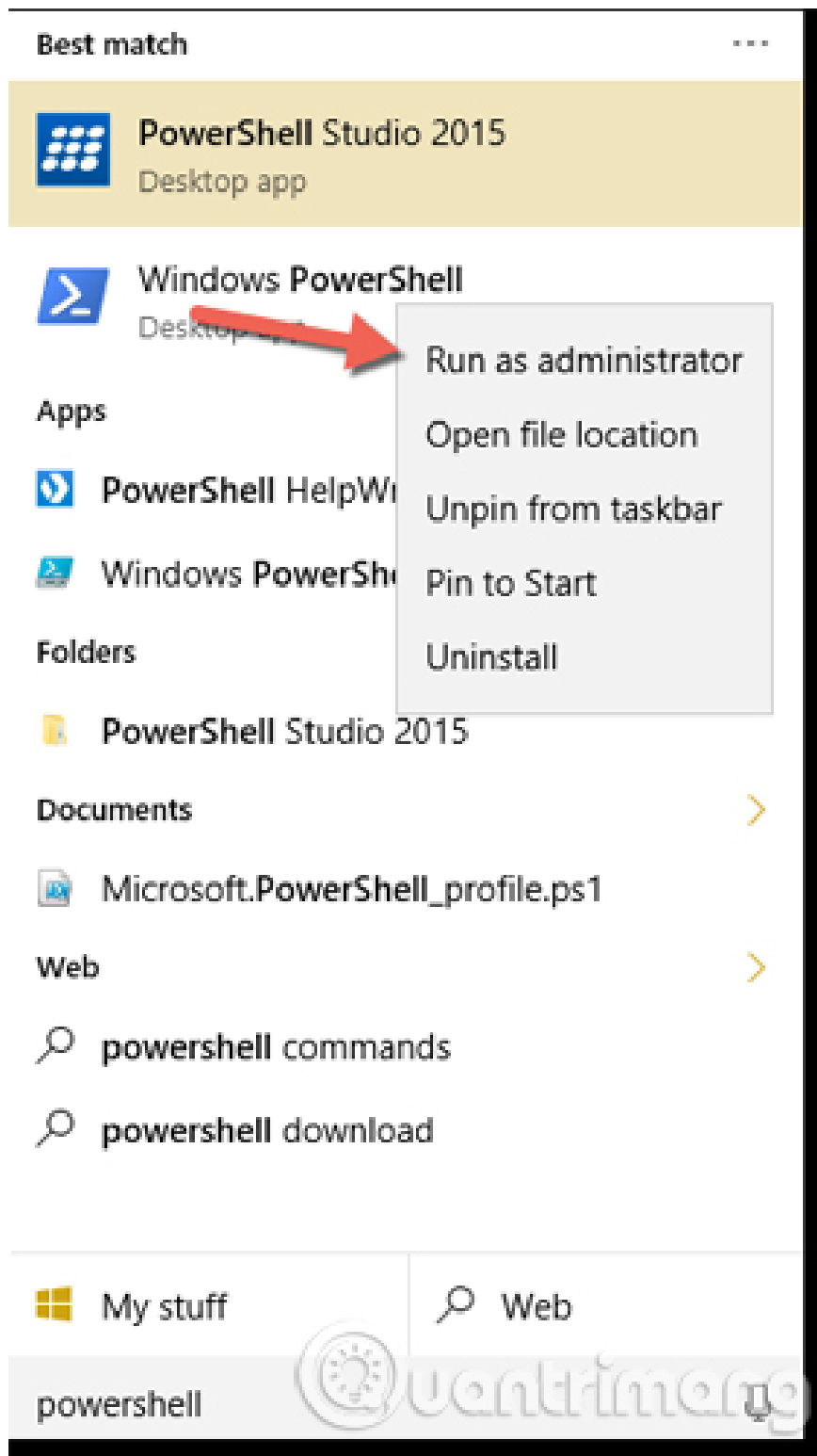
Step 6: And finally, a message appears asking you to restart the computer to complete the process.



Method 2: Join the domain on Windows 10 using PowerShell

Another method to add domains on Windows 10 is to use PowerShell. In this way, you can easily specify all the criteria to set up once. To add a domain to a Windows 10 computer with PowerShell, users will use the **Add-Computer** command. Here is a cmdlet command that allows you to skip all the required properties you provided in the above windows using parameters.

Step 1: To do this, first need to open the PowerShell control panel in Windows 10 by entering " **PowerShell** " into the search box, right-click Windows PowerShell and run as admin.



Step 2 : A blue PowerShell window appears, you can start sending commands. We will use the Add-Computer command.

Step 3: To use Add-Computer to add a local computer to the domain, at least two parameters are required: DomainName and Credential. Each parameter is specified with hyphens, parameter names and values.

Add-Computer -DomainName mylab.local -Credential (Get-Credential)

From the above code sample, you can see that the **mylab.local** domain is being added to the Windows 10 computer. We also use the Credential parameter to specify the account that has the right to add computers to the domain. This requires a PSCredential object. To build this object, you can use the **Get-Credential** command in parentheses. This tells PowerShell to run this command before running Add-Computer.

Step 4: When this command runs, restart the computer and the process is complete.

Adding a domain on Windows 10 is very simple. As you can see, depending on the context, there are several different ways to make domain joins. Be sure to choose the easiest and most convenient method for you.

See more:

1. Instructions for joining the domain on Windows 8.1 (Part 1)
2. Instructions for joining the domain on Windows 8.1 (Part 2)
3. How to join the domain in Windows 7

You finished reading the article "**Instructions to join the domain on Windows 10**" edited by the [TipsMake](#) team. We hope this article has provided you with many useful tech tips and tricks. You can search for similar articles on tips and guides. Thank you for reading and for following us regularly.