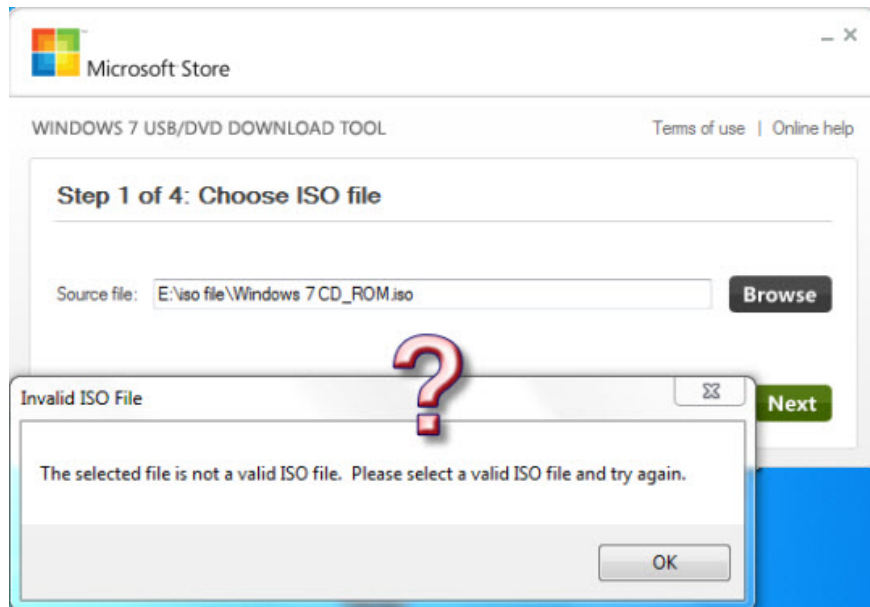


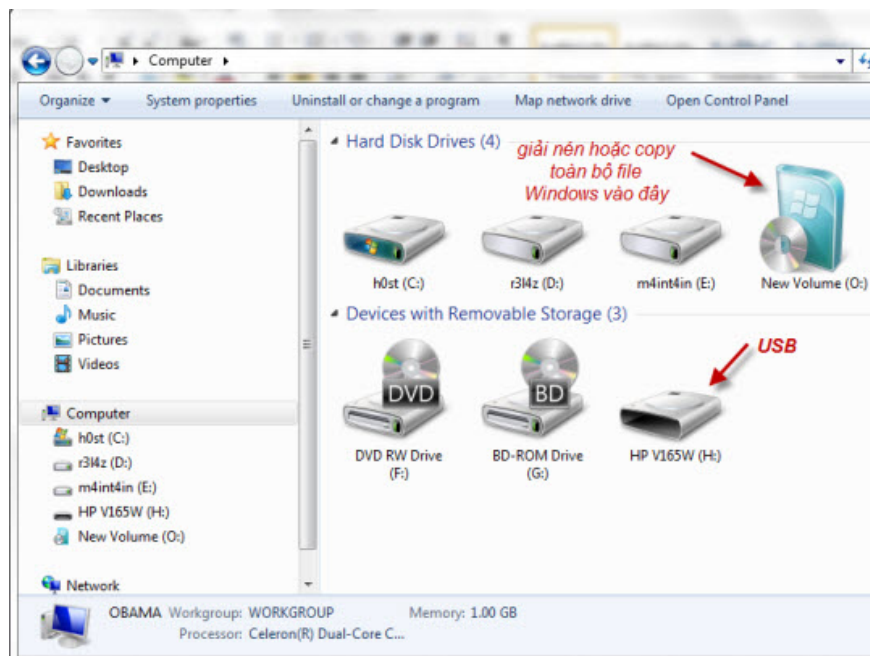
# Instructions to install Windows by USB, create USB boot, USB install Windows

Creating USB boot, USB install Windows is very necessary when your computer does not have a damaged CD / DVD drive or DVD drive is unusable. All you need is a 4GB USB and Windows installation ISO file ...

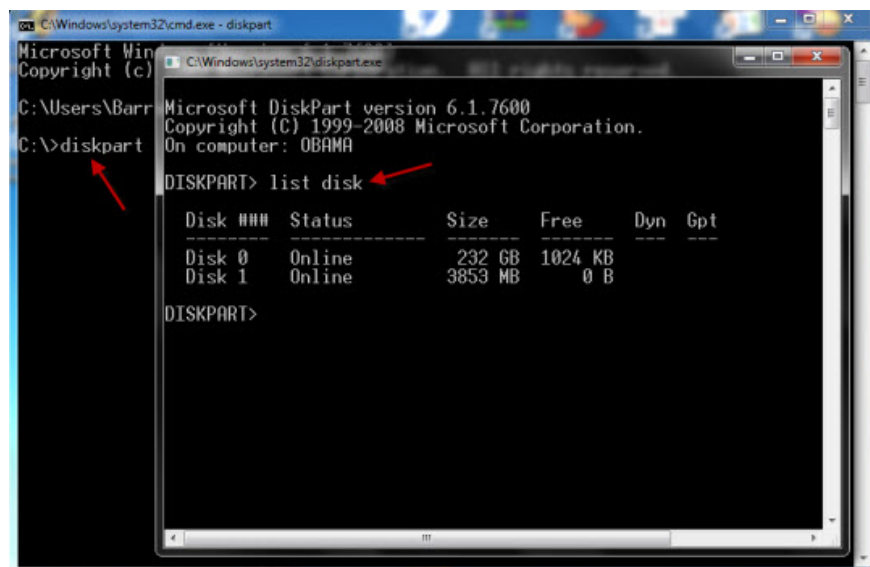
In the previous posts, TipsMake.com introduced you how to install Windows 7 with support software, but sometimes you will get cryptic errors of the following types:



The following article will show you how to install Windows (XP, Vista, 7 .) using USB and the basic DOS commands available. All you need is a USB device (requires 4Gb), \* *.iso file* of the Windows installation disc, you need to proceed to extract these files into a separate empty partition or any folder. , in this example *O* drive, USB drive is *H* :



The steps are as follows, at DOS window, type **diskpart** command, **list disk** :



After typing *list disk* , *diskpart* will display information about the identified drive partitions with Windows, where *Disk 0* is a 250 Gb hard drive, and *Disk 1* is a USB 4 Gb (you should pay attention to the confusion at The next steps can completely erase the data on the hard drive).

**See page 2**

---

The next step is to follow the order of the following statements:

select disk 1  
clean  
t?o phân vùng chính  
select phân vùng 1  
active  
format fs = fat32  
assign  
exit

```
DISKPART> list disk 1

Disk ###  Status         Size      Free      Dyn  Gpt
-----  -
Disk 0    Online         232 GB    1024 KB
Disk 1    Online         3853 MB     0 B

DISKPART> select disk 1 2
Disk 1 is now the selected disk.

DISKPART> clean 3
DiskPart succeeded in cleaning the disk.

DISKPART> create partition primary 4
DiskPart succeeded in creating the specified partition.

DISKPART> select partition 1 5
Partition 1 is now the selected partition.

DISKPART> activate 6

Microsoft DiskPart version 6.1.7600

ACTIVE      - Mark the selected partition as active.
ADD         - Add a mirror to a simple volume.
ASSIGN      - Assign a drive letter or mount point to the selected volume.
ATTRIBUTES - Manipulate volume or disk attributes.
ATTACH      - Attaches a virtual disk file.
AUTOMOUNT   - Enable and disable automatic mounting of basic volumes.
```

```
Attempts recovery on disks in the invalid pack, and
resynchronizes mirrored volumes and RAID5 volumes
that have stale plex or parity data.
REM         - Does nothing. This is used to comment scripts.
REMOVE     - Remove a drive letter or mount point assignment.
REPAIR     - Repair a RAID-5 volume with a failed member.
RESCAN     - Rescan the computer looking for disks and volumes.
RETAIN     - Place a retained partition under a simple volume.
SAN        - Display or set the SAN policy for the currently booted OS.
SELECT     - Shift the focus to an object.
SETID      - Change the partition type.
SHRINK     - Reduce the size of the selected volume.
UNIQUEID   - Displays or sets the GUID partition table (GPT) identifier or
master boot record (MBR) signature of a disk.

DISKPART> format fs=fat32 7

53 percent completed
```

```

Attempts recovery on disks in the invalid pack, and
resynchronizes mirrored volumes and RAID5 volumes
that have stale plex or parity data.
REM - Does nothing. This is used to comment scripts.
REMOVE - Remove a drive letter or mount point assignment.
REPAIR - Repair a RAID-5 volume with a failed member.
RESCAN - Rescan the computer looking for disks and volumes.
RETAIN - Place a retained partition under a simple volume.
SAN - Display or set the SAN policy for the currently booted OS.
SELECT - Shift the focus to an object.
SETID - Change the partition type.
SHRINK - Reduce the size of the selected volume.
UNIQUEID - Displays or sets the GUID partition table (GPT) identifier or
master boot record (MBR) signature of a disk.

DISKPART> format fs=fat32 7

100 percent completed

DiskPart successfully formatted the volume.

DISKPART> assign 8

DiskPart successfully assigned the drive letter or mount point.

DISKPART> exit 9

```

At the end of this process, you have a USB boot. The next thing is to transfer the entire Windows installation file to USB, back to cmd, you use the following command to start backing up Windows installation file to USB:

**xcopy o: \*.\* /s /e /f i:**

```

Microsoft Windows [Version 6.1.7600]
Copyright (c) 2009 Microsoft Corporation. All rights reserved.

C:\Users\BarrackObama>cd\

C:\>diskpart

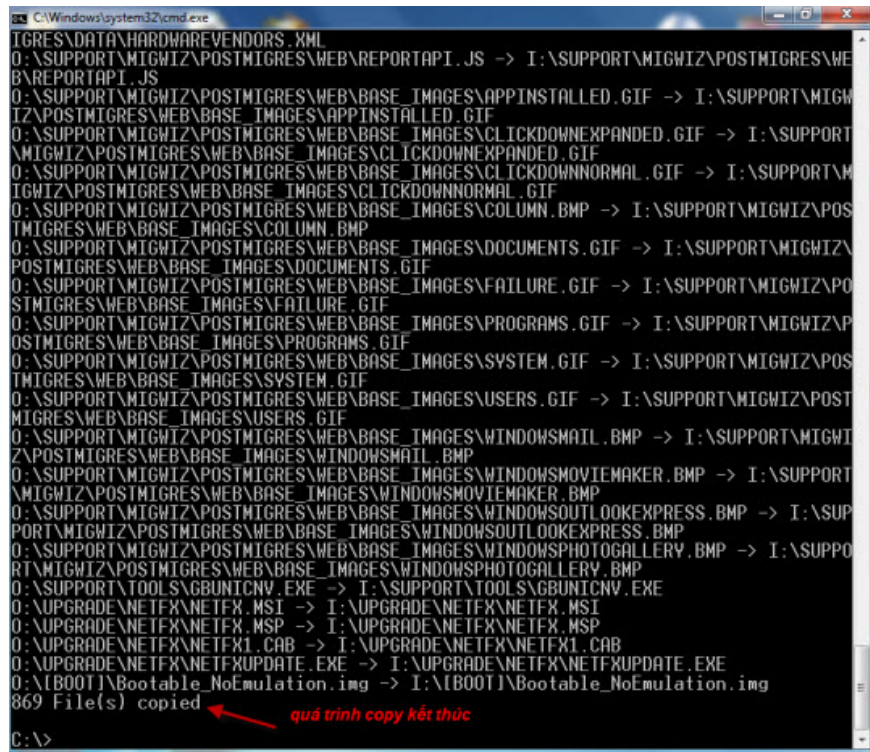
C:\>xcopy o: *.* /s /e /f i:\
O:\AUTORUN.INF -> I:\AUTORUN.INF
Access denied

C:\>xcopy o: *.* /s /e /f i:\
O:\AUTORUN.INF -> I:\AUTORUN.INF
O:\BOOTMGR -> I:\BOOTMGR
O:\SETUP.EXE -> I:\SETUP.EXE
O:\BOOT\BCD -> I:\BOOT\BCD
O:\BOOT\BOOT.SDI -> I:\BOOT\BOOT.SDI
O:\BOOT\BOOTFIX.BIN -> I:\BOOT\BOOTFIX.BIN
O:\BOOT\BOOTSECT.EXE -> I:\BOOT\BOOTSECT.EXE
O:\BOOT\ETFSBOOT.COM -> I:\BOOT\ETFSBOOT.COM
O:\BOOT\MENTEST.EXE -> I:\BOOT\MENTEST.EXE
O:\BOOT\EN-US\BOOTSECT.EXE.MUI -> I:\BOOT\EN-US\BOOTSECT.EXE.MUI
O:\BOOT\FONTS\CHS_BOOT.TTF -> I:\BOOT\FONTS\CHS_BOOT.TTF
O:\BOOT\FONTS\CHT_BOOT.TTF -> I:\BOOT\FONTS\CHT_BOOT.TTF

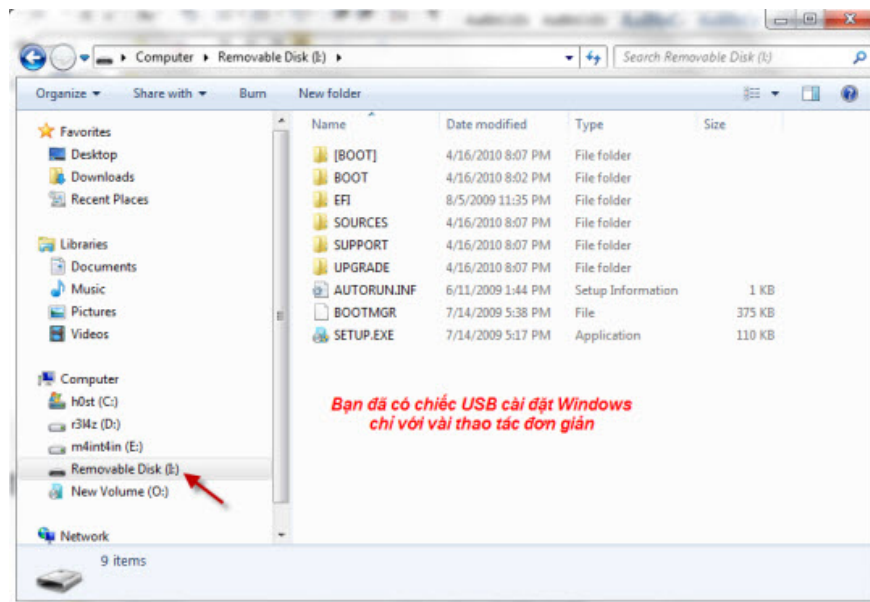
```

*Ổ USB sau khi format từ ổ H sẽ thành ổ I  
ô O là phân vùng chứa file cài đặt Windows  
cú pháp "\*" để copy toàn bộ file vào USB  
cú pháp xcopy ... /s /e /f là bắt buộc*

Wait about 5-10 minutes for the copy process to finish:



This method does not require support software, can be applied to different versions of Windows such as Windows XP, Vista, 7.



Good luck!

You finished reading the article "**Instructions to install Windows by USB, create USB boot, USB install Windows**" edited by the [TipsMake](#) team. We hope this article has provided you with many useful tech tips and tricks. You can search for similar articles on tips and guides. Thank you for reading and for following us regularly.