

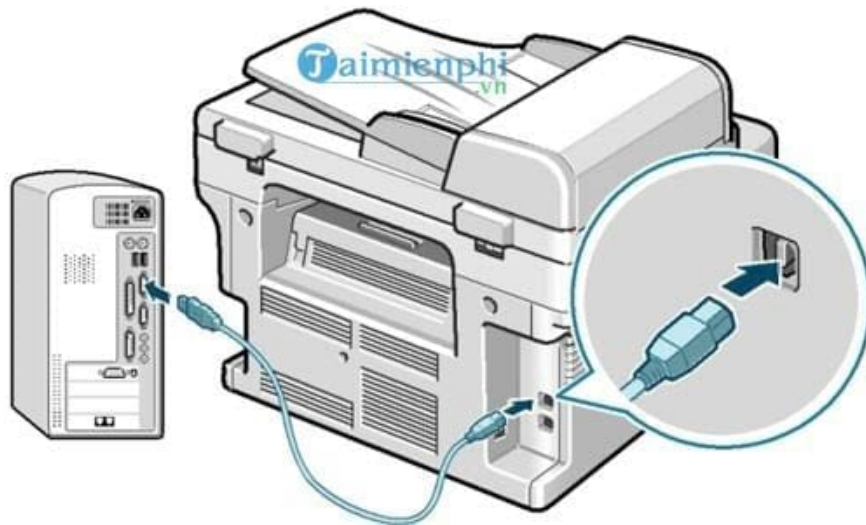
Instructions to fix the printer offline error in the simplest and most effective way

Printer offline error message makes users unable to print documents and text. To fix this error, readers can refer to TipsMake's instructions on how to fix offline printer errors in the article below.

Printer offline errors are not uncommon in office environments, where printing occurs many times a day. Indeed, this is one of the errors that cannot be completely fixed on printers, it is similar to the paper jam error that printers often make. However, we can completely limit it or at least know how to fix it without spending much time.

Simplest instructions to fix printer Offline error

1. Check cable and power connections



Before looking into software issues, we should carefully check whether the connection cable is working stably or not. If the cable has been used for a long time, it is likely that the contact pins will be worn out and the possibility of poor contact.

The same goes for the power cord, the printer power cord is also a common type on computers, so you can plug it in and see if it works stably or not.

2. Check the printer drivers again

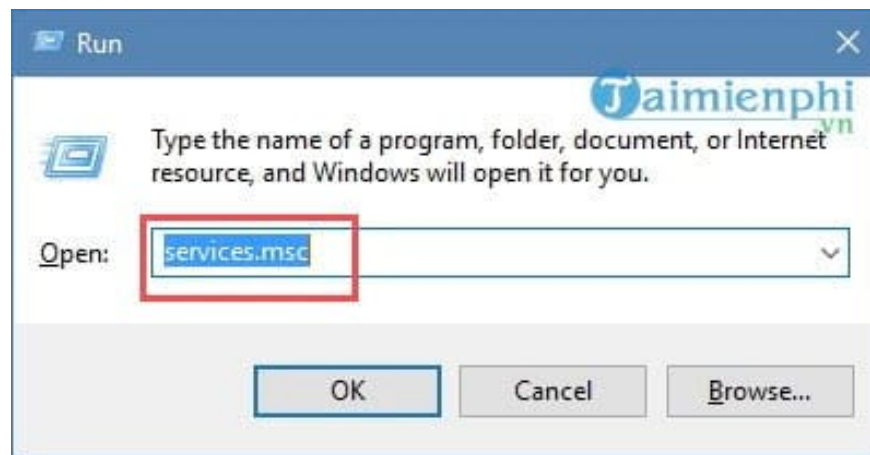
This is quite rare with machines that are printing normally and have the printer offline error, but it happens very often with newly installed machines. Essentially, if you install the wrong driver, the system will still receive and display that printer but cannot print because the printer is always in Offline mode.

Always check your device's model number, such as **Canon LBP 3300, 2900** or other models. Each printer model is different so it uses separate drivers.

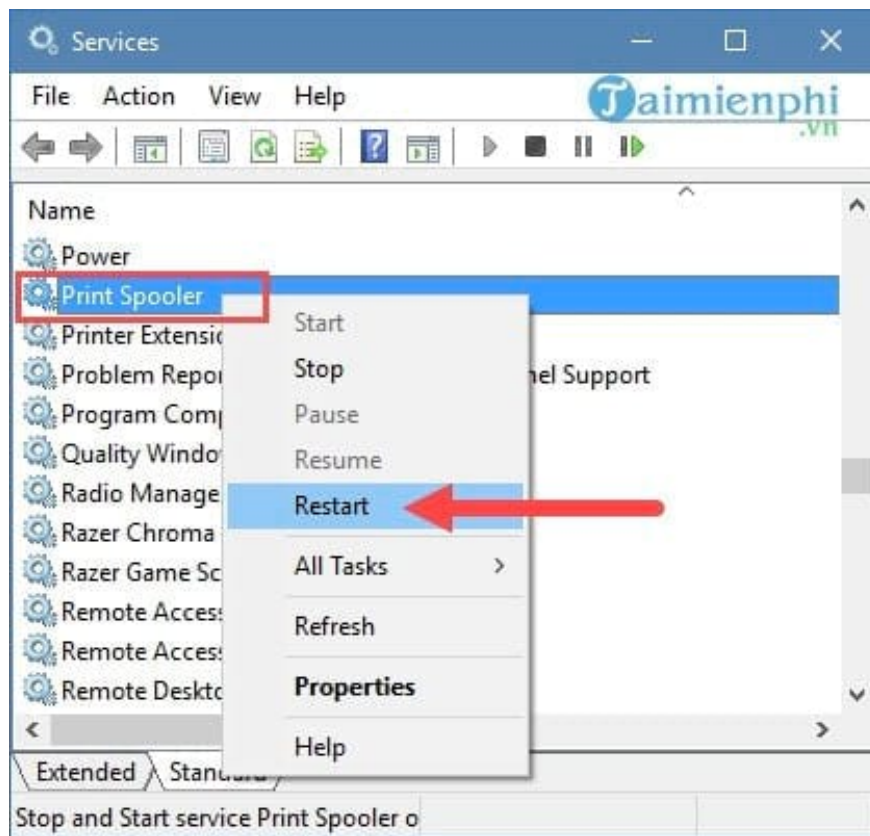
3. Restart processes and services on the computer

Sometimes, because certain components running in the machine suddenly conflict with each other, it can cause some processes related to the printer system to stop working. To be able to restart these processes, you should do this. follow these steps.

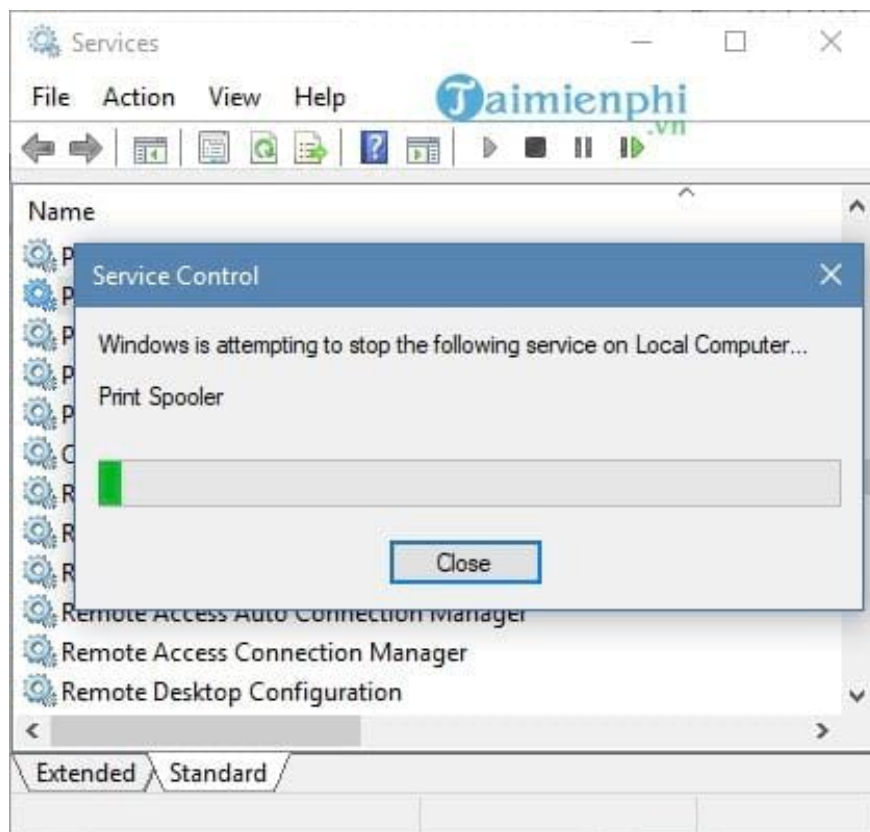
Step 1: On the computer screen, use the **Windows + R** key combination to open the **Run** command box and type "**Services.msc**" and click **OK**.



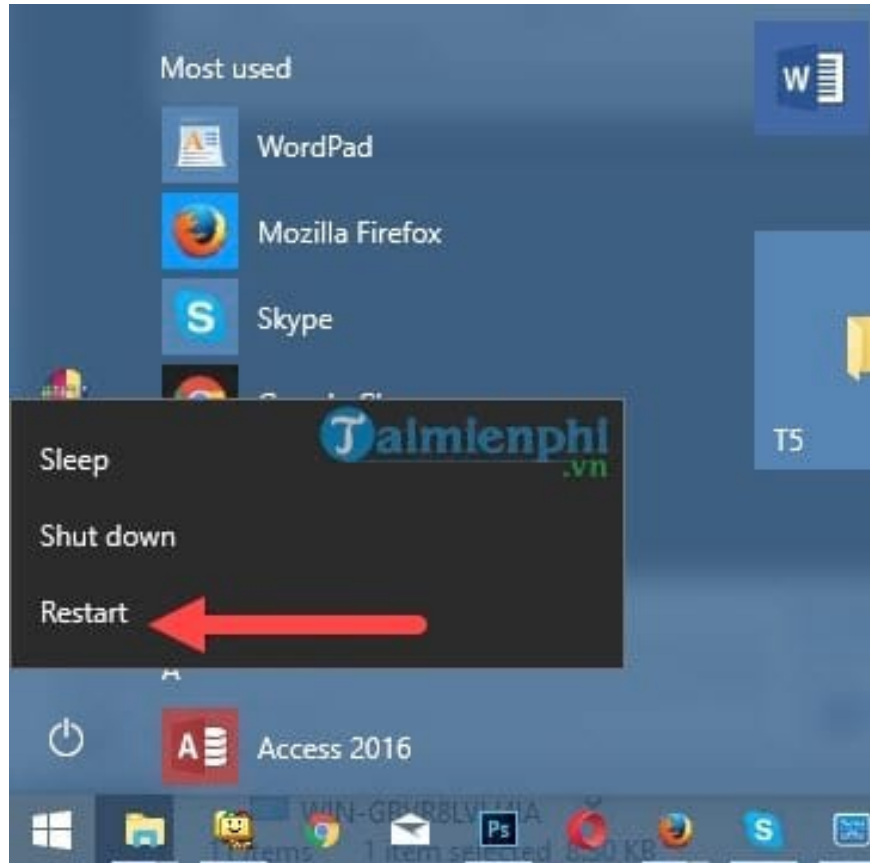
Step 2: In the **Services** section, scroll down to find the process called **Print Spooler**, this is the process that allows you to launch the printer on your computer. Then right click on it and then select **restart** to restart.



Step 3: Wait a few minutes after the process runs, and when it's finished, try to see if the printer error has gone offline or not.



4. Restart the device

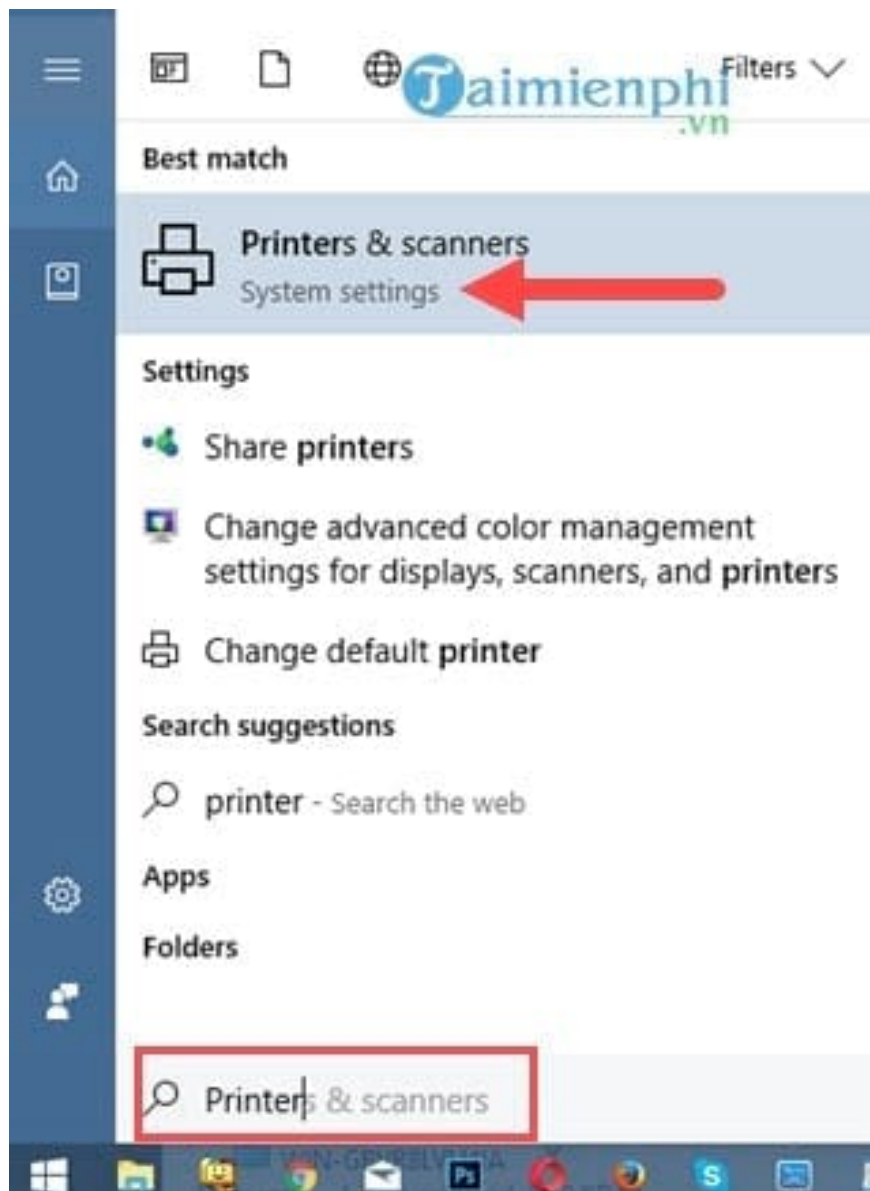


Sometimes this is a simple and effective method to fix the printer offline error. In case the above methods are not effective, restarting will help restart Windows processes.

5. Turn off Offline mode in the printer

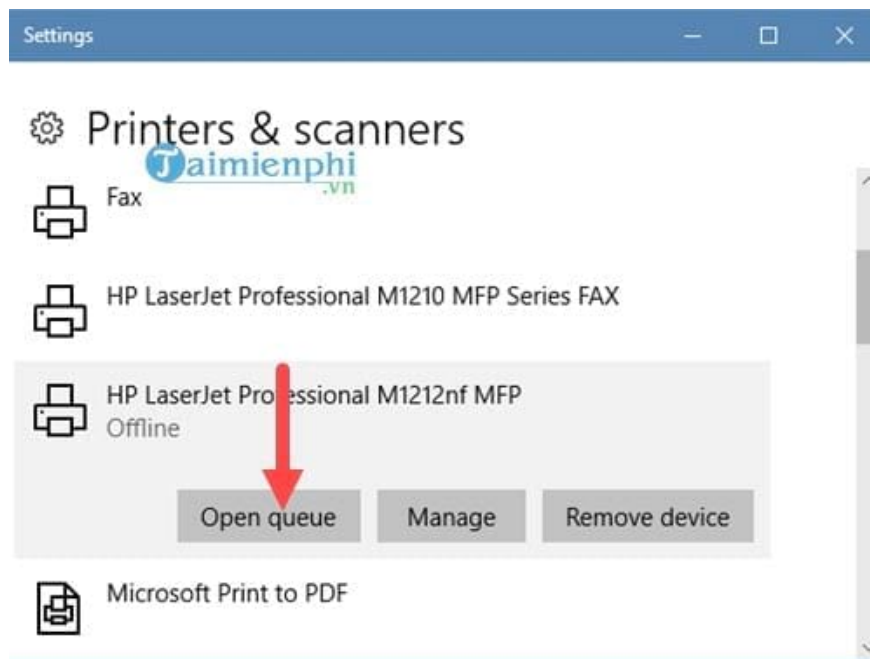
Just like the above situation, sometimes due to some conflicting processes causing the printer to go offline, we can also use the following method to reopen the computer.

Step 1: Open the Start Menu, then type Printer and access " **Printer & Scanner** "

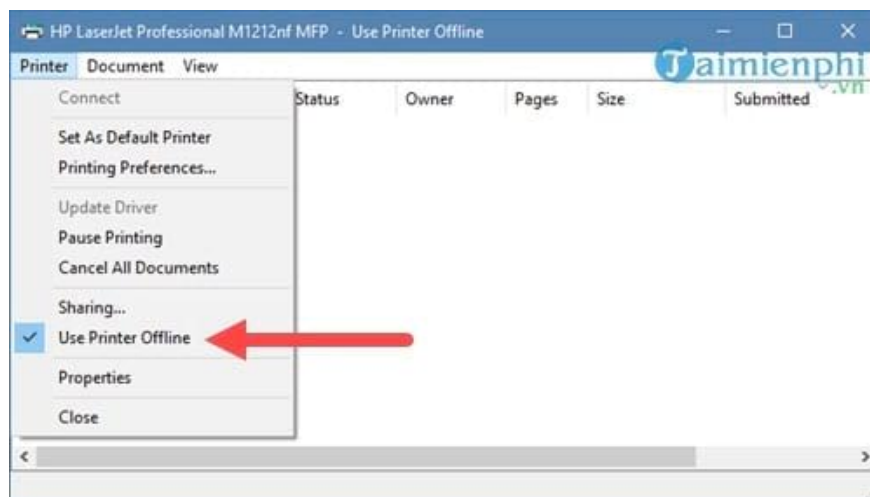


Step 2: Next, in the Printer & Scanner section, click on the printer with the word offline as shown in the picture and select **Open queue** .

Note: On Windows 7 and 8, you must right-click to select Open queue.



Step 3: Here you click on the Printer section and turn off **Use Printer Offline** mode , most likely your device will work and print again.



6. Change printer settings

In most cases, the simplest solution to fix an offline printer is to restart the printer and computer, or unplug the USB cable. If you are using the printer over a wired or wireless network, if a problem occurs, simply restart the router.

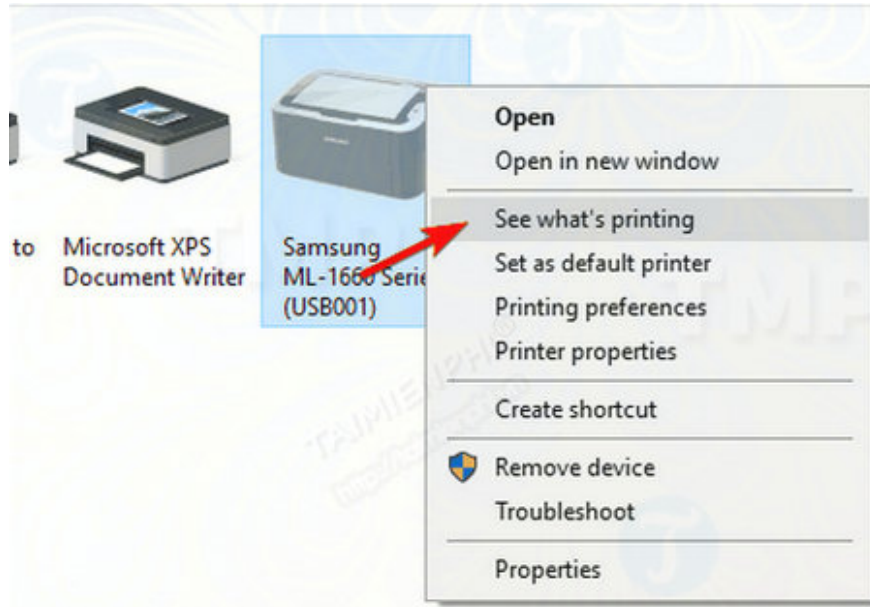
If you follow the above methods but it doesn't work, follow the steps below to fix the printer offline error, fix the offline printer:

Step 1: Open Control Panel, then find and click **Devices and Printers** .



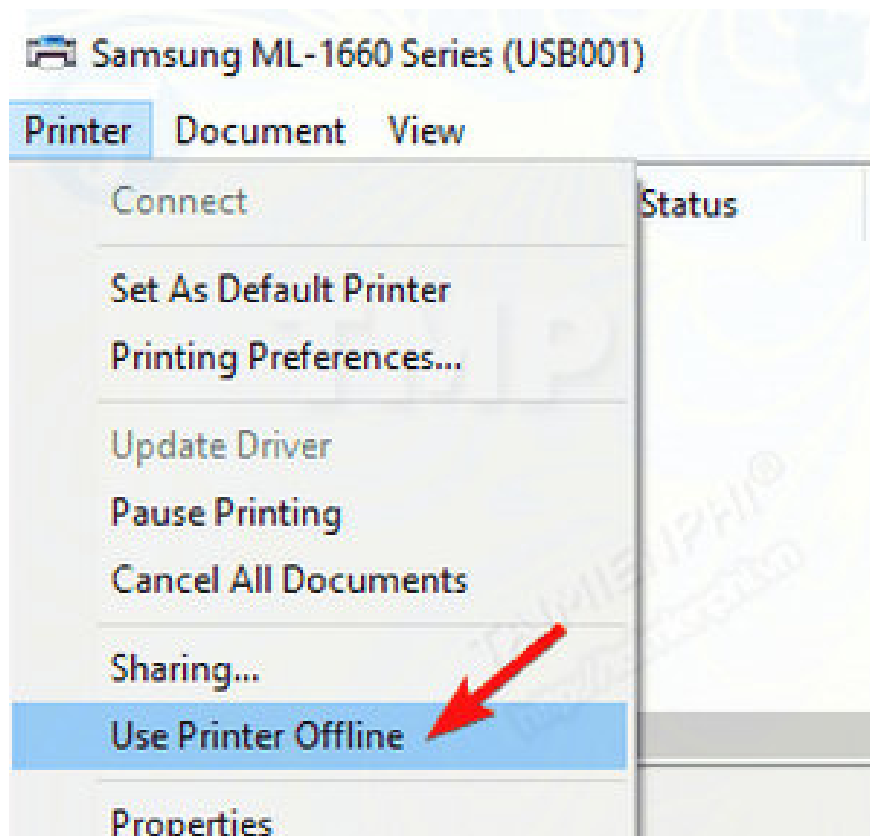
Step 2: Check if the printer is set to default or not.

Step 3: Right-click the default printer and select **See What's Printing** to see the print queue list.



Step 4: If there is any unfinished queue, remove it from the list.

Step 5: On the queue window, select Printer and uncheck the **Use Printer Offline** option .



Step 6: If the Use Printer Offline option has been turned off, try checking the option, then wait a few seconds and then uncheck the option.

Step 7: Check if the printer is connected to the computer correctly, remove the USB cable and then plug it back in.

Step 8: If using the printer over the network, try checking the connection, and try restarting the router.

Step 9: Turn off the printer and computer then turn it back on.

Step 10: If none of the solutions work, try reinstalling the printer driver.

If you are using a wireless printer, try reconnecting the printer to the IP address. To find the IP address, go to **Control Panel => Devices and Printers => Right-click on the printer and select Properties** .

In the Web Services or General tab you will see the printer's IP address. Copy this address and paste it into your browser address bar.

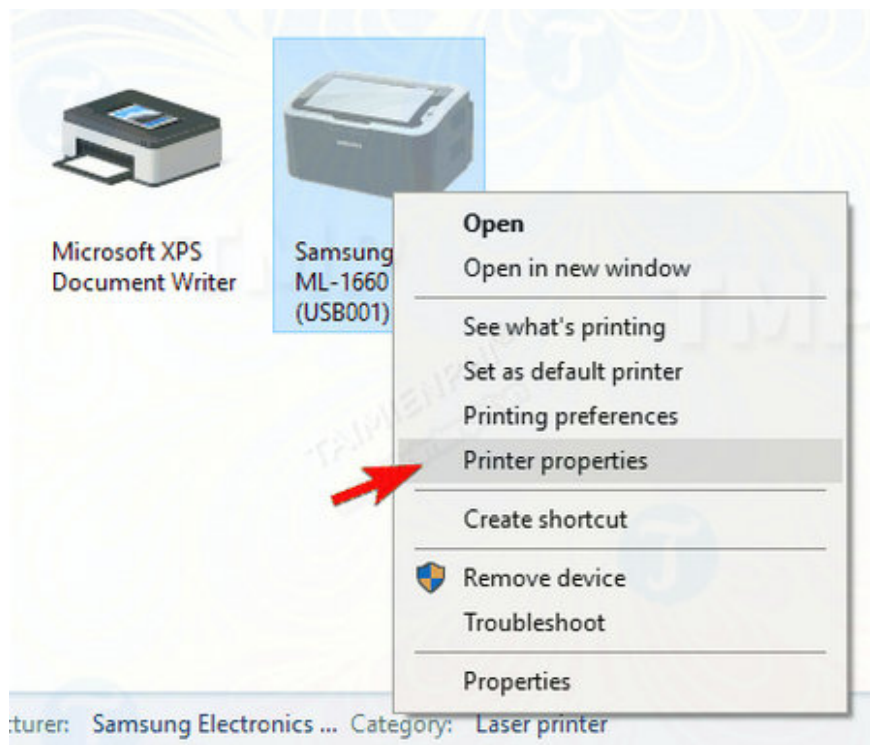
Or alternatively, open Command Prompt and enter ping + printer's IP address and press Enter. If an error is returned, the printer connection may not be working.

7. Change printer properties

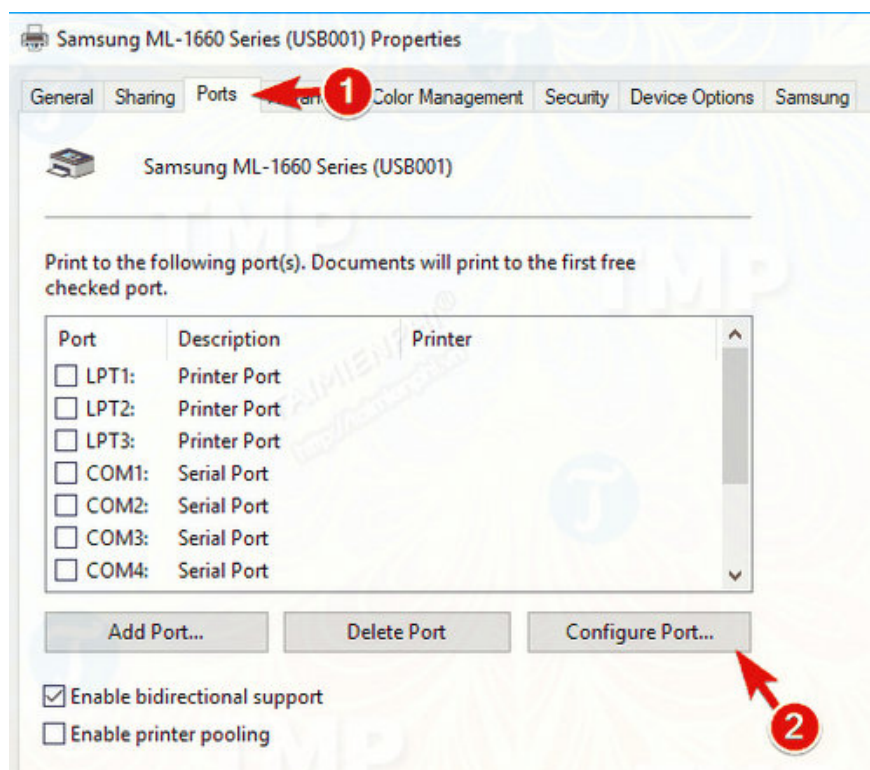
According to some users, changing printer properties can also help fix offline printer errors and fix offline printers.

Step 1: Access Control Panel => Devices and Printers.

Step 2: Right-click the printer, select **Printer properties** .



Step 3: On the Properties window, click **the Ports** tab . Select your printer address from the list, then click the **Configure Port** button .



Step 4: Uncheck **the SNMP Status Enabled** option and then click **OK** to save the changes.

Above are the causes and ways to fix the printer offline error, helping you overcome the printer offline situation and be able to reprint and continue your unfinished work. The above 5 ways will be a necessary resource for you

when encountering unexpected errors.

In addition, if your printer is being used but the printer error message is Spoolsv.exe, Print Spooler service not running, don't hesitate any longer and immediately refer to the article on how to fix the printer error Spoolsv.exe, Print Spooler service not running right away because this is a basic error, you can completely fix it.

You finished reading the article "**Instructions to fix the printer offline error in the simplest and most effective way**" edited by the [TipsMake](#) team. We hope this article has provided you with many useful tech tips and tricks. You can search for similar articles on tips and guides. Thank you for reading and for following us regularly.